



EP-B101

EQUIOS/Trueflow SE/DotTIFF Controller

START-UP GUIDE

Ver.1.00

EP-B101 EQUIOS/Trueflow SE/DTC Ver.1.00 Start-up Manual

- Contents -

Chapter .1. Preface	1
Chapter .2. Operation Flow	2
2.1. Operations Performed When Installing a New EP-B101	3
2.2. Operations Performed When EP-B101 expansion	3
2.3. Operations Performed When EP-B101 deletion	3
Chapter .3. Various Setup	5
3.1. Various patch Installation	5
3.1.1. Installation of EQUIOS patch	5
3.1.2. Installation of Trueflow SE patch	8
3.1.3. Installation of DTC patch	11
3.2. Output Device Settings	14
3.2.1. Settings in EQUIOS	14
3.2.2. Settings in Trueflow SE.....	20
3.2.3. Settings in DTC	25
Appendix. Error Code List	29

Chapter 1 Preface

The Purpose of this Service Manual

This Service Manual provides instructions for the various maintenance procedures used to perform technical service on EQUIOS, Trueflow SE and DTC server machine on which EP-B101 has been installed.

This Manual Is Intended for Use by...

This manual has been designed for use by field engineers performing technical service on PX Series equipment. Before performing EP-B101 setting work on a RIP server machine, we recommend first thoroughly reading this manual to prepare for any problems and questions that may be encountered in the field while performing the actual service work.

Please note!

This document is to describe the work for performing the technical services of the existing system and a new setup for connecting to the EQUIOS, Trueflow SE and DTC server machine EP-B101, the contents of hardware installation is not shown

Please refer to the Setup Guide for various related about hardware setup and EP-B101, for the connection of the output device

Chapter 2 Operation Flow

Overview

This section presents a flowchart illustrating the operation procedures performed during field service. The following items are covered in this chapter:

- * Operations performed during New Installation of EP-B101
- * Operations performed during EP-B101 expansion
- * Operations performed during EP-B101 deletion

In this chapter, we have explained on the assumption that the flow of work from the state and have a variety of machines running the RIP server, recorder device is connected via the EP-B101.

Supplemental Information

- * This service manual does not cover the procedures for a variety of RIP server machines installation. Please refer to various PX series installation guides and startup guides for various RIP applications registered in the technological information database for detailed information on OS installation procedures.

Necessary Items for Setting

EP-B101 modules support package(EQ/TF/TD patch)

- * According to the type of RIP server to set up, please put the following to obtain the patch.

[For EQUIOS]

Ver.1.07 EQ718

[For Trueflow SE]

Ver.7.30 TF324

[For DTC]

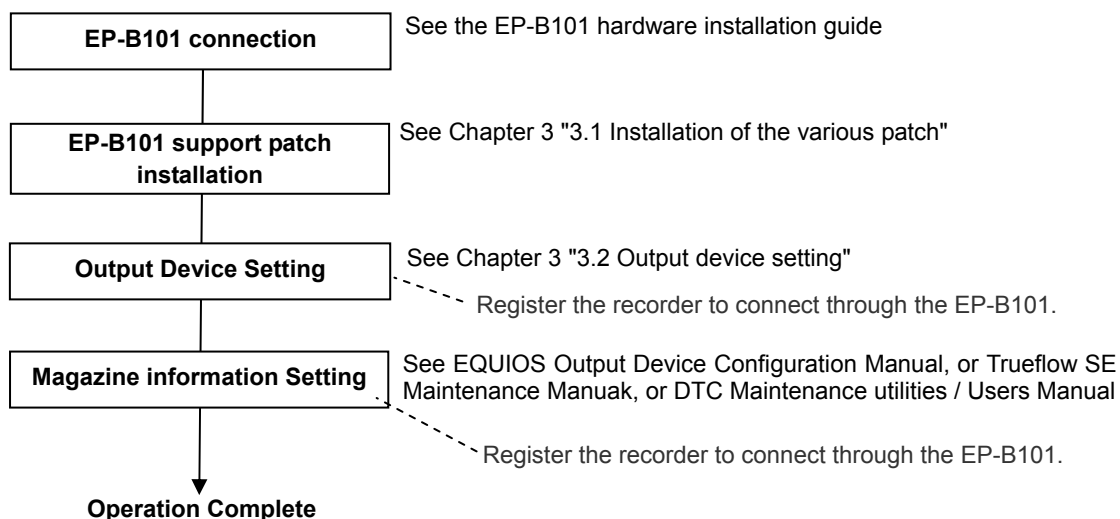
Ver.4.01 TD112(for 32bit OS)

Ver.4.01 TD113(for 64bit OS)

2.1 Operations Performed When Installing a New EP-B101

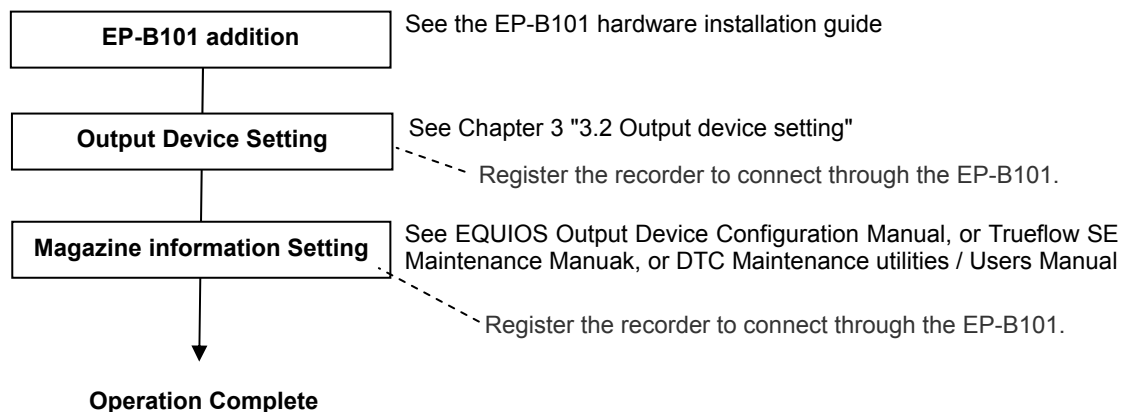
Please work according to the following procedures when installing a new EP-B101.

Please work according to the following procedures when EP-B101.



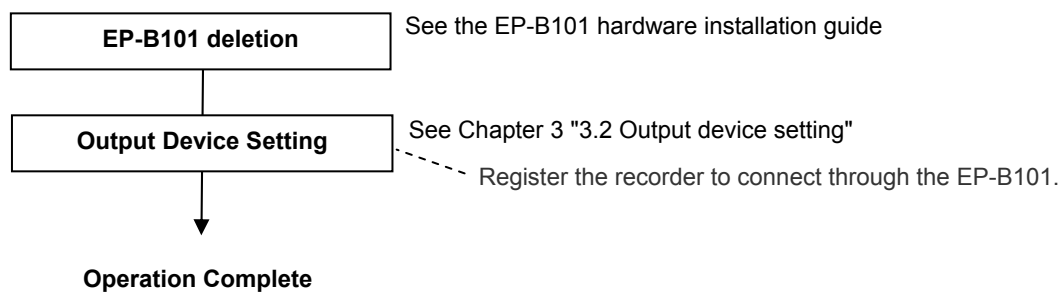
2.2 Operations Performed When EP-B101 expansion

Please work according to the following procedures when adding EP-B101.



2.3 Operations Performed When EP-B101 deletion

Please work according to the following procedures when deleting EP-B101.



Chapter 3 Various Setup

Overview

This chapter explains various package installation procedures etc. for the setup of the EQUIOS system.

3.1 Various patch installation

This chapter explains the installation procedure of various patch (EQUIOS, Trueflow SE, DTC).

3.1.1 Installation of EQUIOS patch

In this work, please go to if you want to connect to the server machine has been installed EQUIOS Ver.1.07 the EP-B101.

!! Important !!

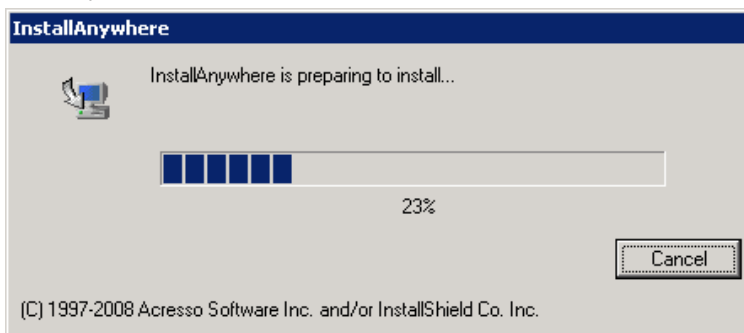
Before you install the EQUIOS application patch, check the following:

- * ***During execution of the installation, FlowCenter services are automatically suspended and EQUIOS is not available. Before you start installation, make sure that processing is not being performed on EQUIOS.***
- * ***Before you start installation, make sure that EQUIOS is not being accessed from other clients.***
- * ***Exit all other application software and tools that are currently running.***

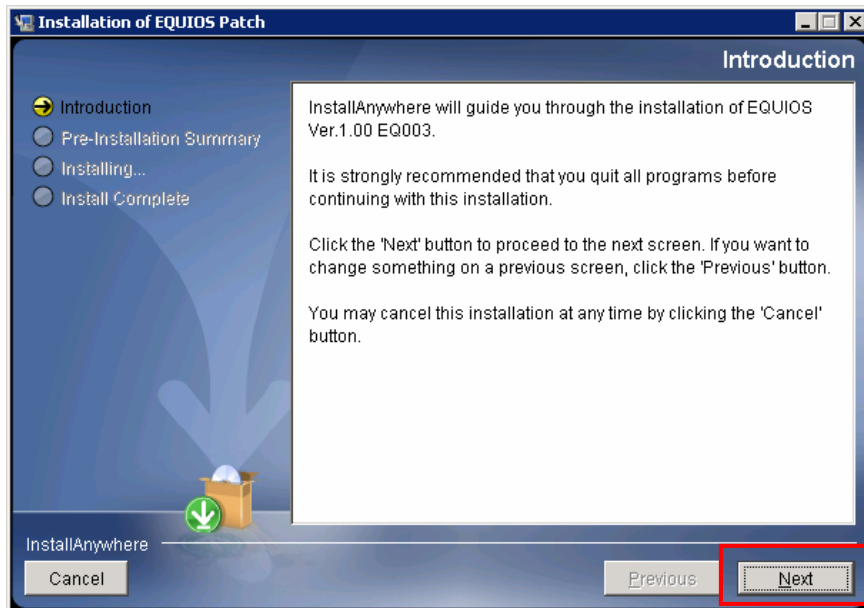
If you neglect to check the above, installation of the EQUIOS application patch may not be performed successfully.

Procedure

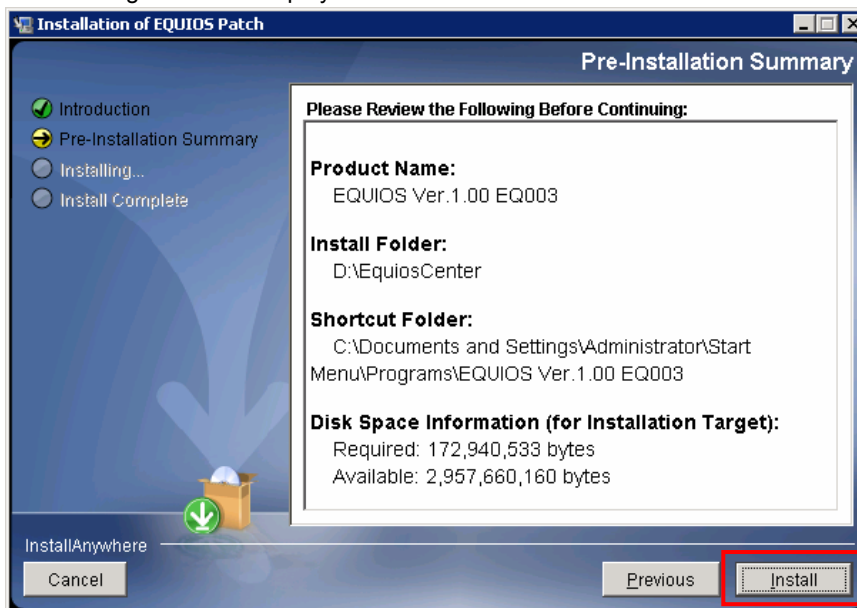
1. Double-click the "EQPatchSetup.exe" file in the EQUIOS patch package image. The following window is displayed. Please wait for a while.



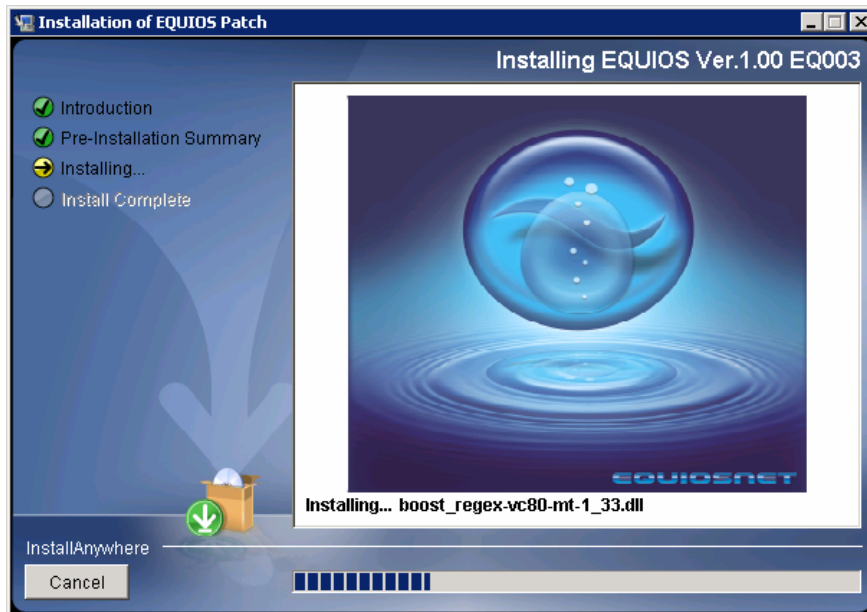
2. The following window is displayed. Click the “Next” button.



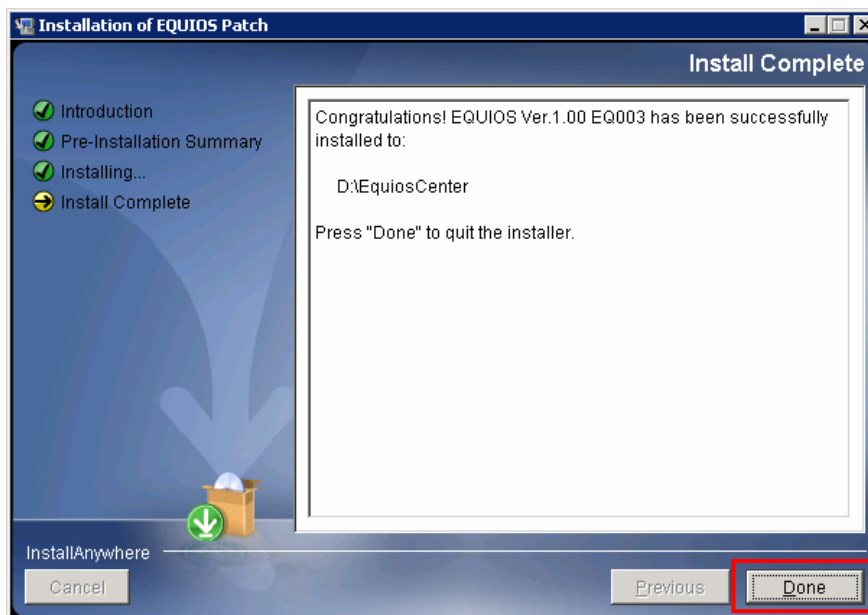
3. The following window is displayed. Click the “Install” button to start the installation.



4. The patch installation is executed. Please wait for a while.



5. When the installation ends, the following window is displayed. Click the "Done" button.



This completes the installation of EQUIOS patch on server side.

3.1.2 Installation of Trueflow SE patch

In this work, please go to if you want to connect to the server machine has been installed Trueflow SE Ver.7.30 the EP-B101.

!! Important !!

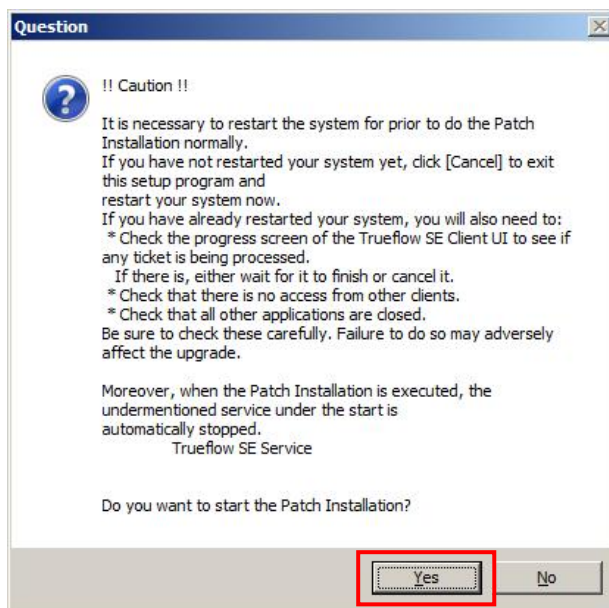
Before you install the Trueflow SE application patch, check the following:

- * **During execution of the installation, FlowCenter services are automatically suspended and Trueflow SE is not available. Before you start installation, make sure that processing is not being performed on Trueflow SE.**
- * **Before you start installation, make sure that Trueflow SE is not being accessed from other clients.**
- * **Exit all other application software and tools that are currently running.**

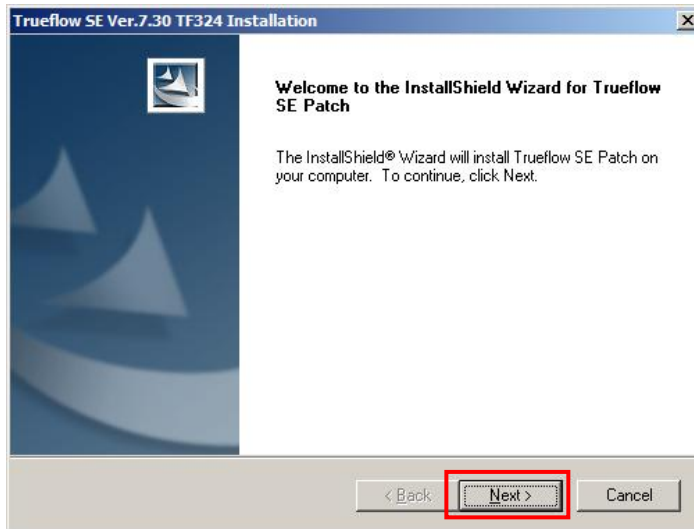
If you neglect to check the above, installation of the Trueflow SE application patch may not be performed successfully.

Procedure

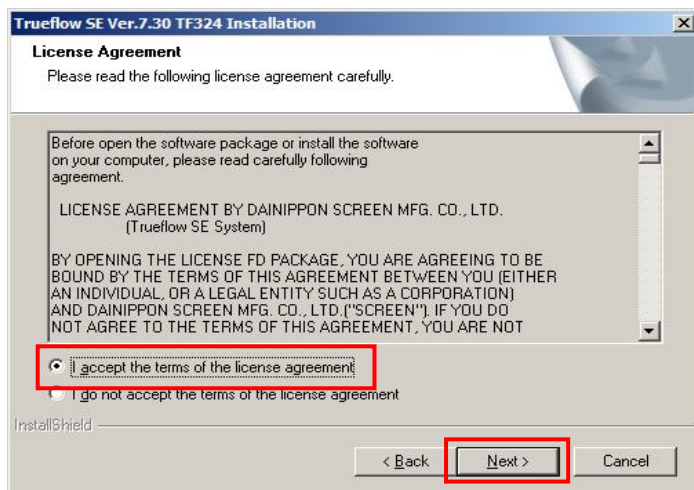
1. Log on as “administrator”, double-click the “Disk1\setup.exe” file in the TF patch package image by using Explorer. The following window is displayed. Please wait for a while. Click “Yes”.



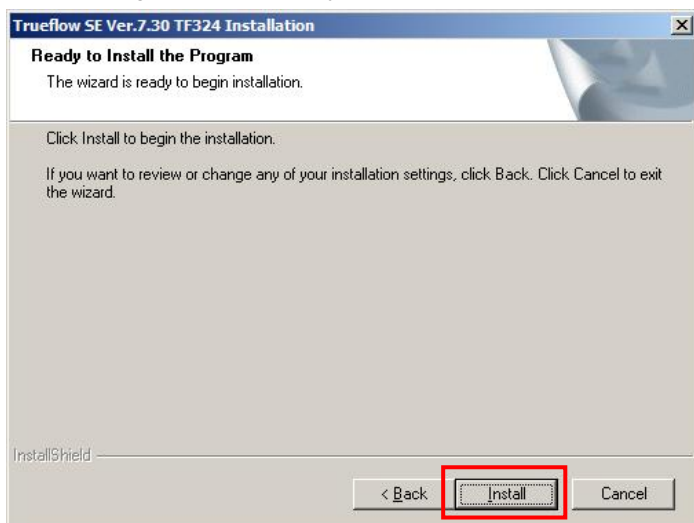
- The following window is displayed. Click "Next".



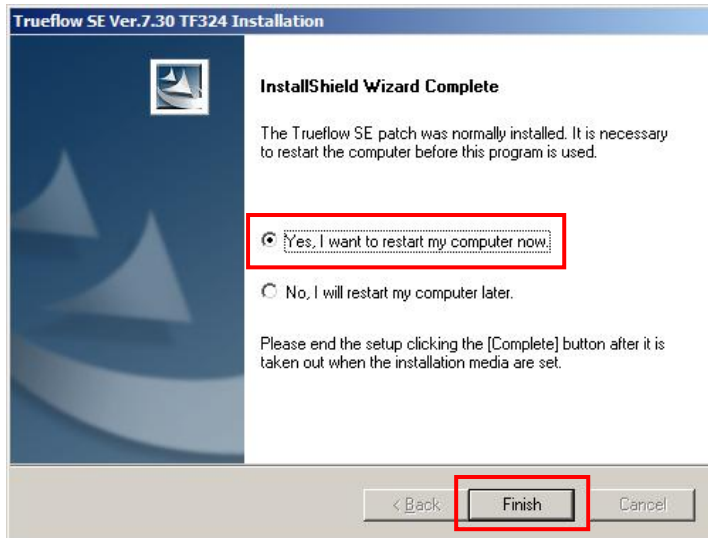
- The License Agreement is displayed. Click I accept the terms of the license agreement and then click "Next".



- The following window is displayed. Click "Install" to start installation of the patch.



5. When installation of the patch is completed, the following notification screen is displayed. Click the “Yes”, I want to restart my computer now. Radio button to restart the computer.



!! Important !!

If the above InstallShield Wizard Complete screen is not displayed, and an error message is displayed during installation, this means that installation of the Trueflow SE application patch has failed.

Please contact our nearest office.

This completes installation of the Trueflow SE application patch.

3.1.3 Installation of DTC patch

In this work, please go to if you want to connect to the server machine has been installed Trueflow 3 DotTIFF Controller Ver.4.01 the EP-B101.

!! Important !!

Before you install the DTC application patch, check the following:

- * ***During execution of the installation, FlowCenter services are automatically suspended and Trueflow SE is not available. Before you start installation, make sure that processing is not being performed on DTC.***
- * ***Before you start installation, make sure that DTC is not being accessed from other clients.***
- * ***Exit all other application software and tools that are currently running.***

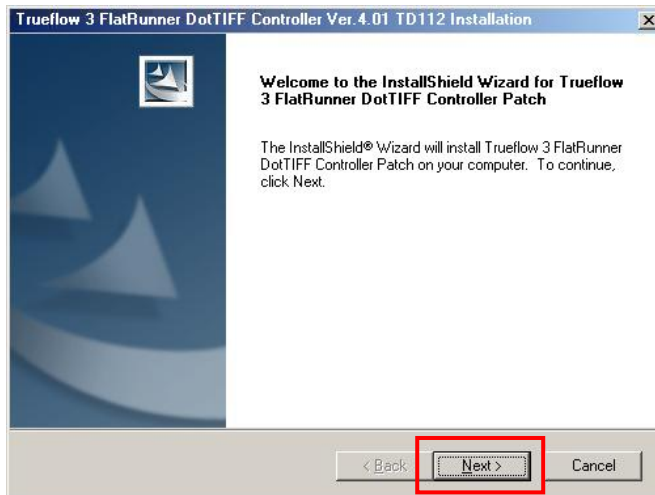
If you neglect to check the above, installation of the DTC application patch may not be performed successfully.

Procedure

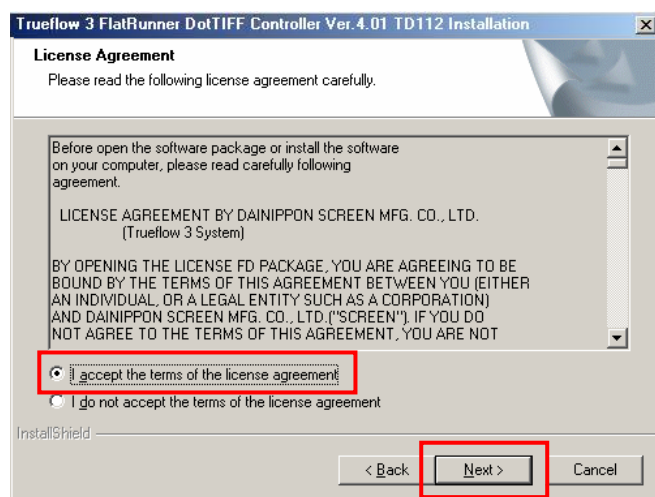
1. Log on as "administrator", double-click the "Disk1\setup.exe" file in the TD patch package image by using Explorer. The following window is displayed. Please wait for a while. Click "Yes".



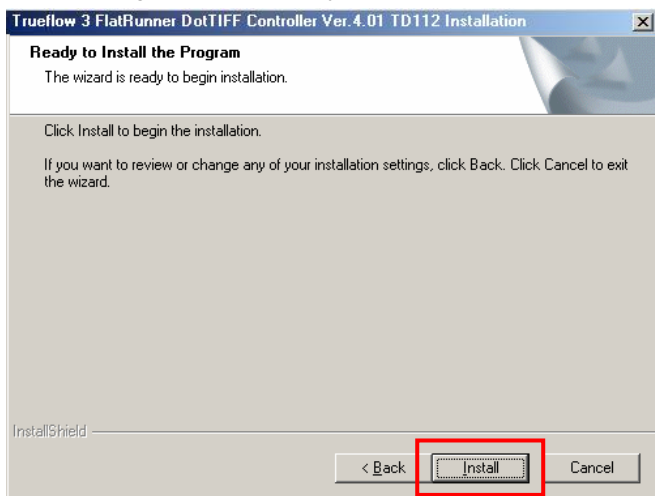
- The following window is displayed. Click "Next".



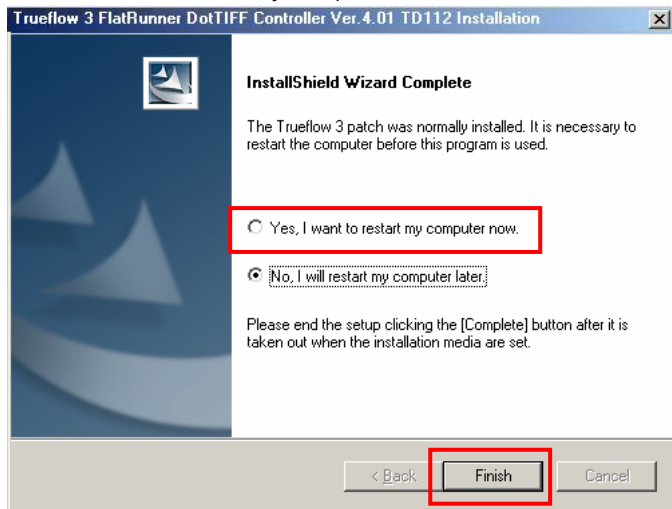
- The License Agreement is displayed. Click I accept the terms of the license agreement and then click "Next".



- The following window is displayed. Click "Install" to start installation of the patch.



5. When installation of the patch is completed, the following notification screen is displayed. Click the "Yes", I want to restart my computer now. Radio button to restart the computer.



!! Important !!

If the above InstallShield Wizard Complete screen is not displayed, and an error message is displayed during installation, this means that installation of the DTC application patch has failed. Please contact our nearest office.

This completes installation of the DTC application patch.

3.2 Output Device Settings

This chapter describes the procedures of setting recorder that are connected through various EP-B101 (EQUIOS, Trueflow SE, DTC) on the server machine.

3.2.1 Settings in EQUIOS

In this work, please go to if you want to connect to the server machine has been installed EQUIOS Ver.1.07EQ718 patch the EP-B101.

Starting and exiting the Recorder Setup Tool

◆ Start-up

Select "EQUIOS" and then "MaintenanceTool" from the Windows Start menu. Open "Output Device Utility" and double click "Output Device Setup" from among the tool shortcuts.

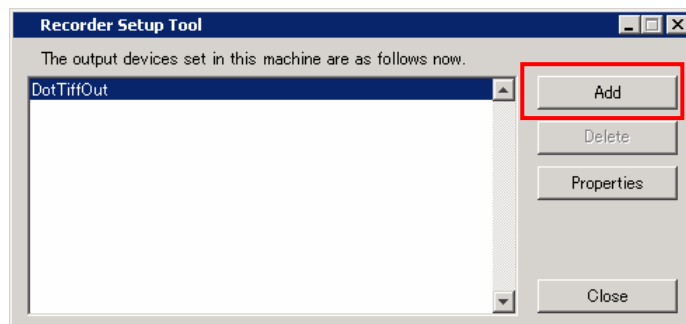
◆ Exit

Click the "Close" button.

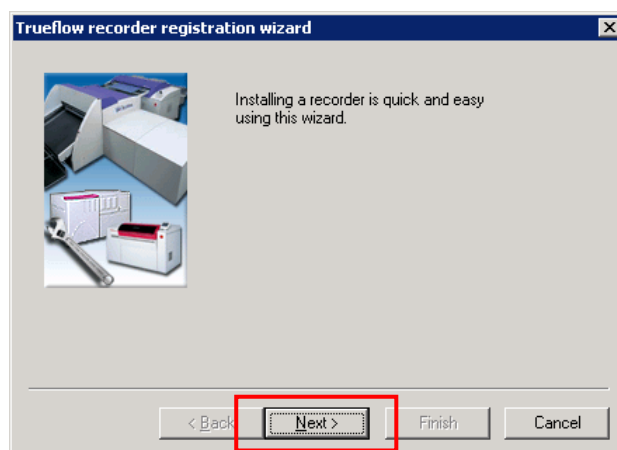
Adding a Recorder

Operation

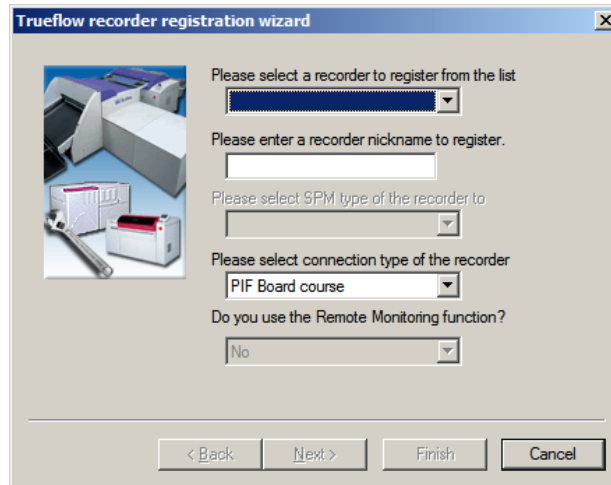
1. Click the "Add" button.



2. "Recorder registration wizard" dialog box is displayed.



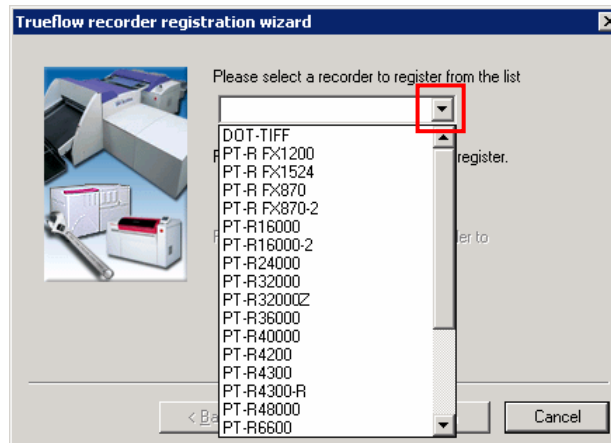
3. Click "Next". The following dialog box is displayed.



The dialog box is titled "Trueflow recorder registration wizard". It contains the following fields and controls:

- Please select a recorder to register from the list:** A dropdown menu.
- Please enter a recorder nickname to register:** A text entry box.
- Please select SPM type of the recorder to:** A dropdown menu.
- Please select connection type of the recorder:** A dropdown menu with "PIF Board course" selected.
- Do you use the Remote Monitoring function?:** A dropdown menu with "No" selected.
- Navigation buttons:** "< Back", "Next >", "Finish", and "Cancel".

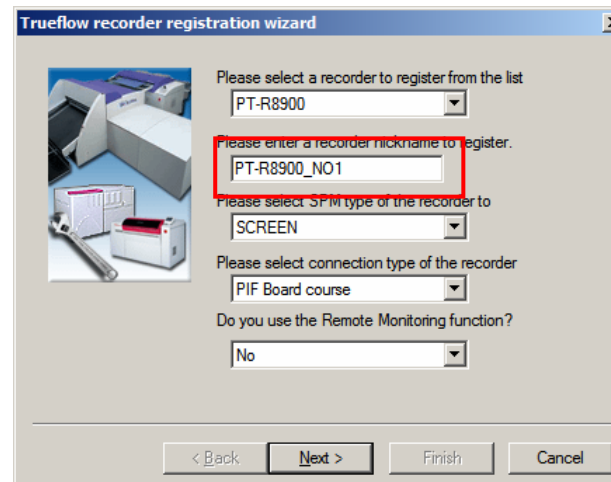
4. First, click the arrow on the right edge of the top combo box, then select the type of recorder you want to register from the list of recorder types.



The dialog box is titled "Trueflow recorder registration wizard". The dropdown menu for "Please select a recorder to register from the list" is open, showing a list of recorder types. A red box highlights the dropdown arrow. The list includes:

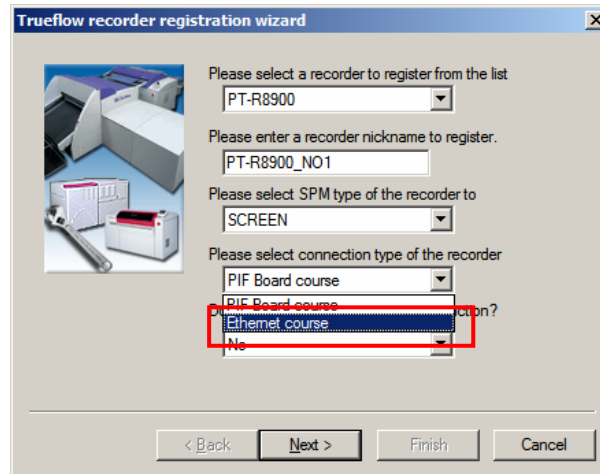
- DOT-TIFF
- PT-R FX1200
- PT-R FX1524
- PT-R FX870
- PT-R FX870-2
- PT-R16000
- PT-R16000-2
- PT-R24000
- PT-R32000
- PT-R32000Z
- PT-R36000
- PT-R40000
- PT-R4200
- PT-R4300
- PT-R4300-R
- PT-R48000
- PT-R6600

5. Next, enter a nickname for the recorder in the middle text entry box.



The dialog box is titled "Trueflow recorder registration wizard". The dropdown menu for "Please select a recorder to register from the list" is now set to "PT-R8900". The text entry box for "Please enter a recorder nickname to register" contains "PT-R8900_NO1" and is highlighted with a red box. The other fields and controls remain the same as in the previous steps.

- Next, Select "Ethernet course" from "Please select connection type of the recorder to" combo box.



Trueflow recorder registration wizard

Please select a recorder to register from the list
PT-R8900

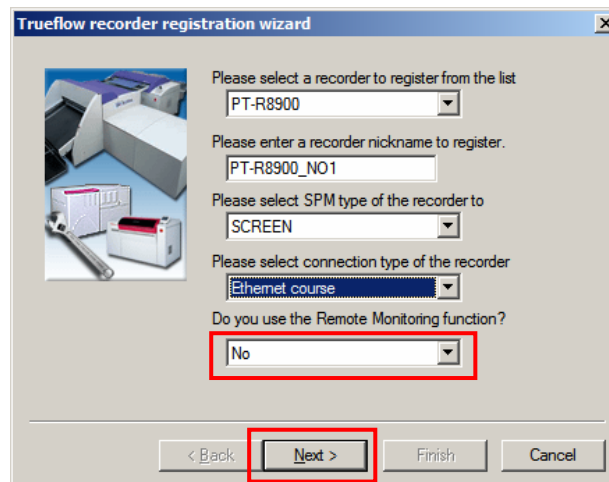
Please enter a recorder nickname to register.
PT-R8900_NO1

Please select SPM type of the recorder to
SCREEN

Please select connection type of the recorder to
PIF Board course
Ethernet course
No

< Back Next > Finish Cancel

- Next, If launching Remote Monitoring display in the EQUIOS-PTR client UI is necessary, select "Yes" from "Do you use the Remote Monitoring function?" combo box. And then, click "Next" button.



Trueflow recorder registration wizard

Please select a recorder to register from the list
PT-R8900

Please enter a recorder nickname to register.
PT-R8900_NO1

Please select SPM type of the recorder to
SCREEN

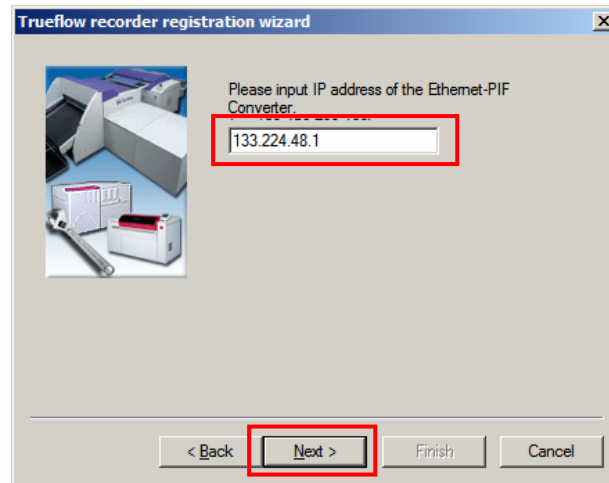
Please select connection type of the recorder to
Ethernet course

Do you use the Remote Monitoring function?
No

< Back Next > Finish Cancel

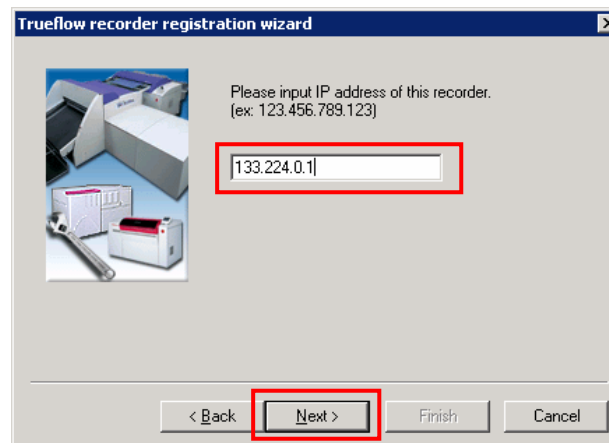
When a recorder then has not Remote Monitoring function is selected, the "Do you use the Remote Monitoring function?" combo box cannot be used.

8. Input IP address of EP-B101 is connected. Click "Next".

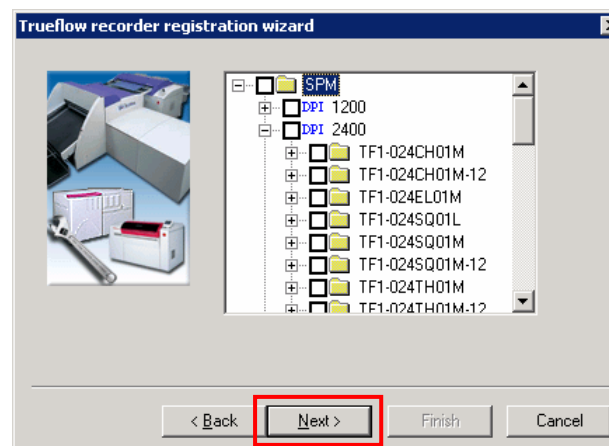


When a recorder has not Remote Monitoring function or has not been used Remote Monitoring, proceed to step 10.

9. Input IP address of recorder, click "Next".

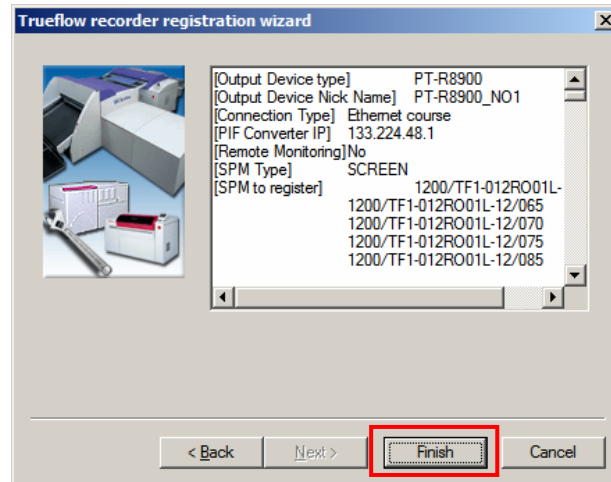


10. The following dialog box is displayed. Register the SPM you want to use.



To open the SPM tree, click the “+” on the left side. To close this, click the “-” icon. To select SPM, add a checkmark by clicking the “R” icon. When you select an SPM resolution or an SPM family, all the lower level SPM is selected. To select all the SPMs, select the top level “SPM”. When you have selected the SPM you want to use, click “Next”.

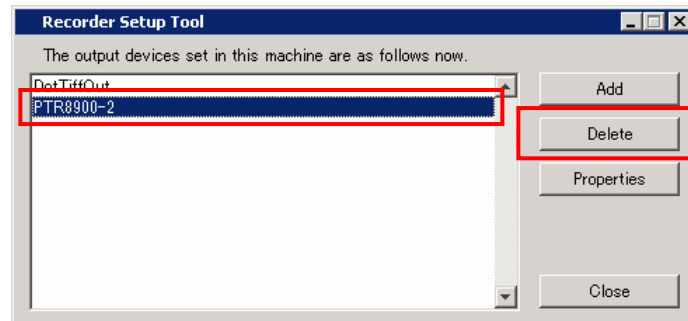
11. A settings confirmation window is displayed. To confirm the settings, click “Finish”.
To adjust the settings, click “Back”.



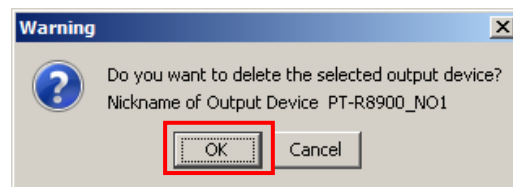
Deleting a Recorder

Operation

1. Select the recorder you want to delete and click "Delete".



2. Click "Yes" button in the following confirmation dialog box.



3.2.2 Settings in Trueflow SE

In this work, please go to if you want to connect to the server machine has been installed Trueflow SE Ver.7.30 TF724 patch the EP-B101.

Starting and exiting the Recorder Setup Tool

◆ Start-up

Select "Trueflow SE" and then "MaintenanceTool" from the Windows Start menu. Open "Output Device Utility" and double click "Output Device Setup" from among the tool shortcuts.

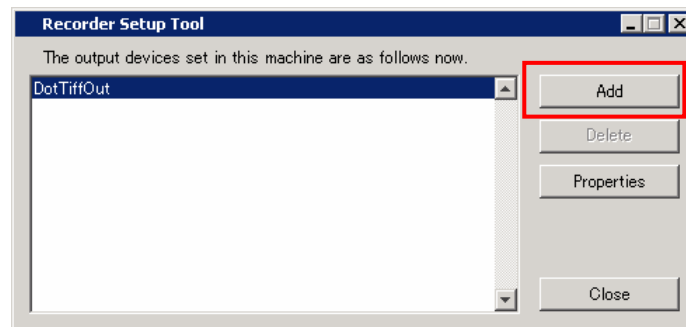
◆ Exit

Click the "Close" button.

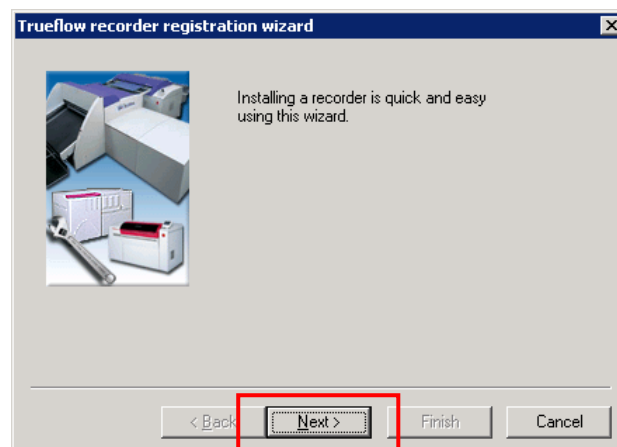
Adding a Recorder

Operation

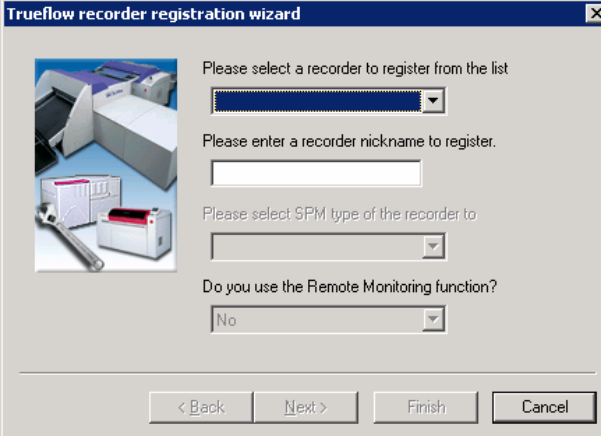
1. Click the "Add" button.



2. "Recorder registration wizard" dialog box is displayed.



3. Click "Next". The following dialog box is displayed.

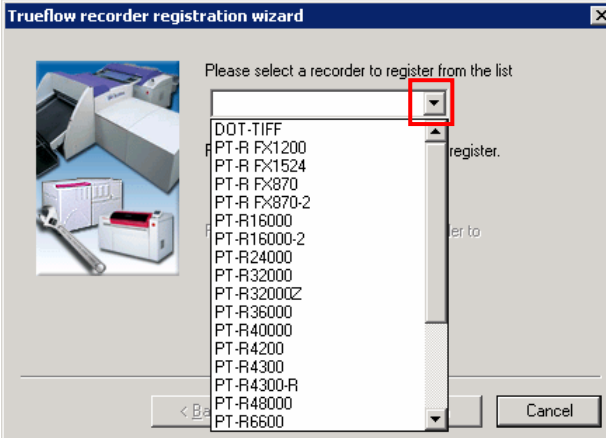


The dialog box is titled "Trueflow recorder registration wizard". It contains the following fields and instructions:

- Please select a recorder to register from the list:** A dropdown menu.
- Please enter a recorder nickname to register:** A text input field.
- Please select SPM type of the recorder to:** A dropdown menu.
- Do you use the Remote Monitoring function?** A dropdown menu with "No" selected.

At the bottom, there are four buttons: "< Back", "Next >", "Finish", and "Cancel".

4. First, click the arrow on the right edge of the top combo box, then select the type of recorder you want to register from the list of recorder types.

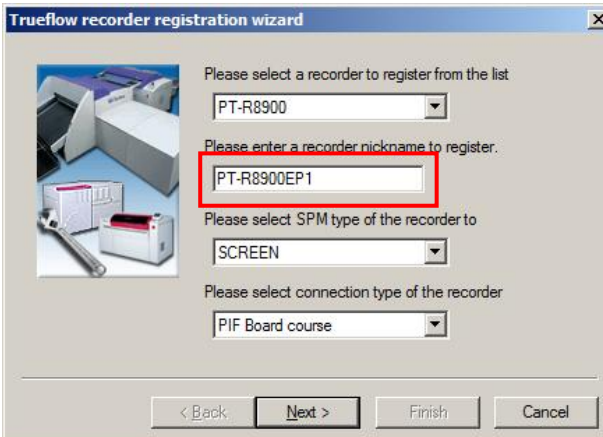


The dialog box is titled "Trueflow recorder registration wizard". The dropdown menu for "Please select a recorder to register from the list" is open, showing a list of recorder types. A red box highlights the dropdown arrow. The list includes:

- DOT-TIFF
- PT-R FX1200
- PT-R FX1524
- PT-R FX870
- PT-R FX870-2
- PT-R16000
- PT-R16000-2
- PT-R24000
- PT-R32000
- PT-R32000Z
- PT-R36000
- PT-R40000
- PT-R4200
- PT-R4300
- PT-R4300-R
- PT-R48000
- PT-R6600

At the bottom, there are three buttons: "< Back", "Next >", and "Cancel".

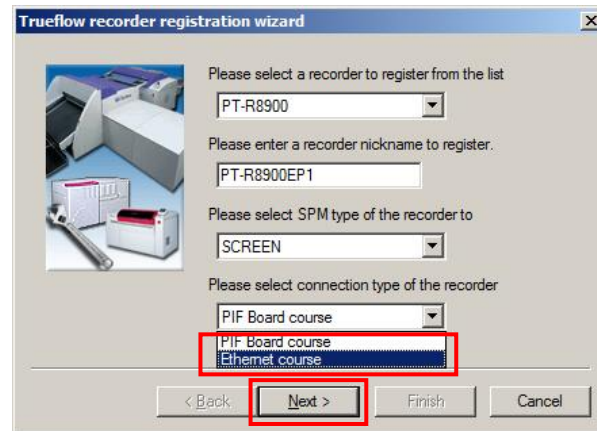
5. Next, enter a nickname for the recorder in the middle text entry box.



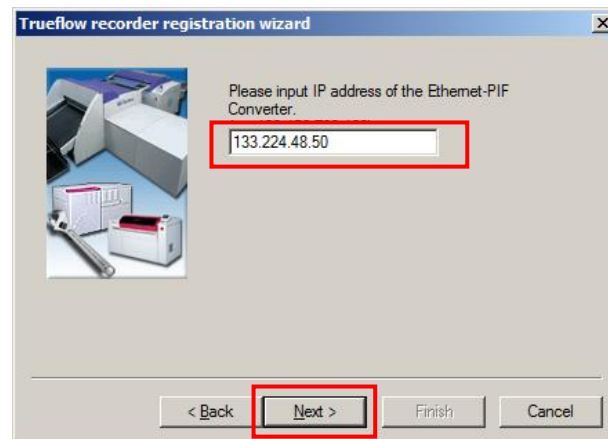
The dialog box is titled "Trueflow recorder registration wizard". The dropdown menu for "Please select a recorder to register from the list" is now set to "PT-R8900". The text input field for "Please enter a recorder nickname to register" contains "PT-R8900EP1" and is highlighted with a red box. The dropdown menu for "Please select SPM type of the recorder to" is set to "SCREEN". The dropdown menu for "Please select connection type of the recorder" is set to "PIF Board course".

At the bottom, there are four buttons: "< Back", "Next >", "Finish", and "Cancel".

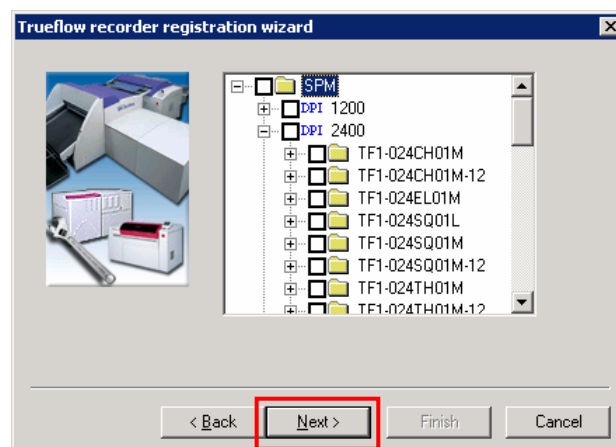
6. Next, Select "Ethernet course" from "Please select connection type of the recorder to" combo box. Click "Next".



8. Input IP address of EP-B101 is connected, click "Next".



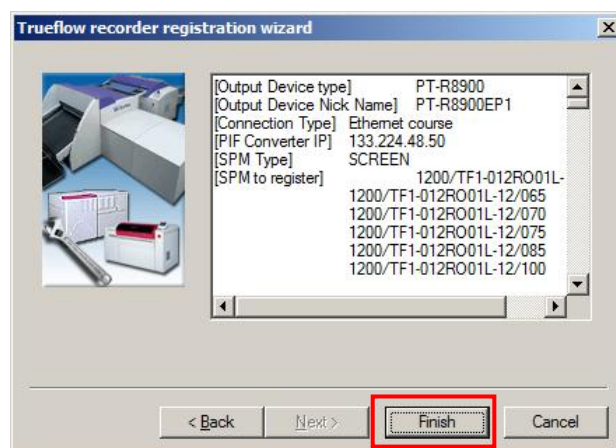
8. The following dialog box is displayed. Register the SPM you want to use.



To open the SPM tree, click the "+" on the left side. To close this, click the "-" icon. To select SPM, add a checkmark by clicking the "R" icon. When you select an SPM

resolution or an SPM family, all the lower level SPM is selected. To select all the SPMs, select the top level "SPM". When you have selected the SPM you want to use, click "Next".

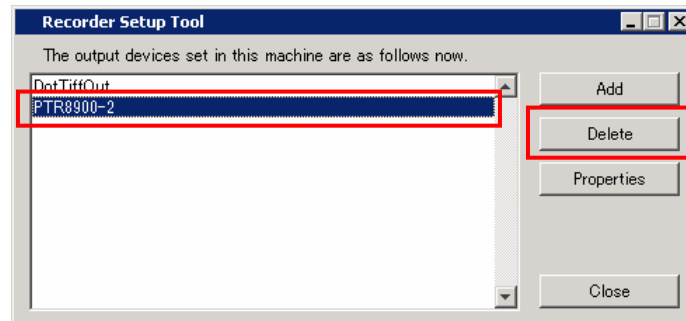
9. A settings confirmation window is displayed. To confirm the settings, click "Finish". To adjust the settings, click "Back".



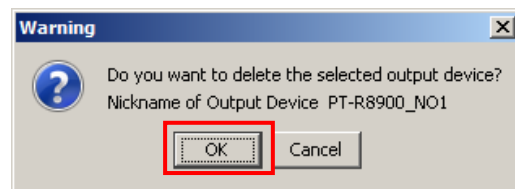
Deleting a Recorder

Operation

1. Select the recorder you want to delete and click "Delete".



2. Click "Yes" button in the following confirmation dialog box.



3.2.3 Settings in DTC

In this work, please go to if you want to connect to the server machine has been installed DTC Ver.4.01 TD112(for 32bit OS) or TD113(for 64bit OS) patch the EP-B101.

Starting and exiting the Recorder Setup Tool

◆ Start-up

Select "Trueflow 3" and then "MaintenanceTool" from the Windows Start menu. Open "Output Device Utility" and double click "Output Device Setup" from among the tool shortcuts.

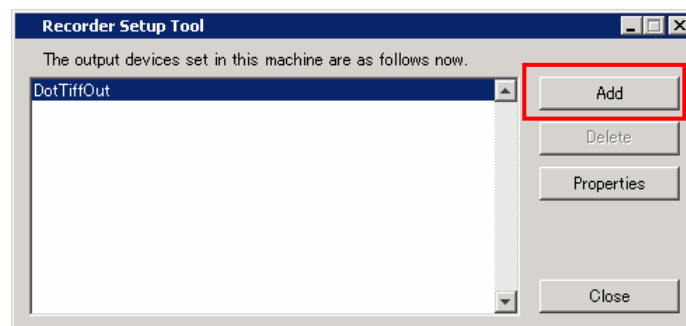
◆ Exit

Click the "Close" button.

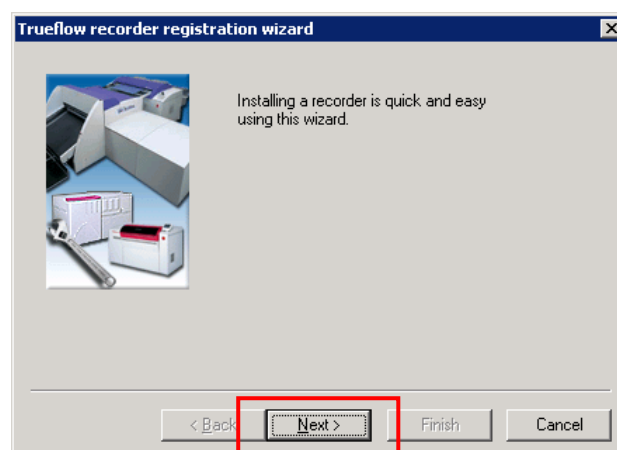
Adding a Recorder

Operation

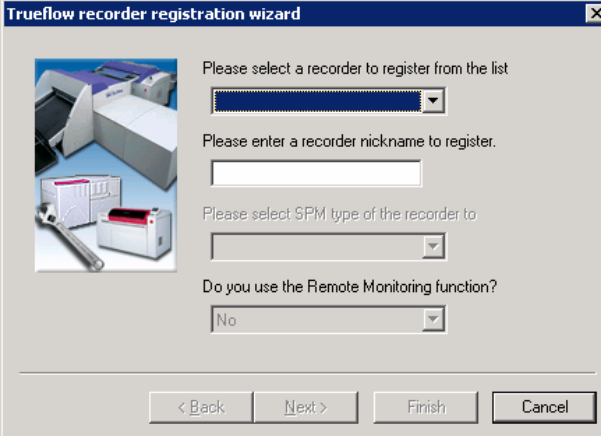
1. Click the "Add" button.



2. "Recorder registration wizard" dialog box is displayed.



3. Click "Next". The following dialog box is displayed.

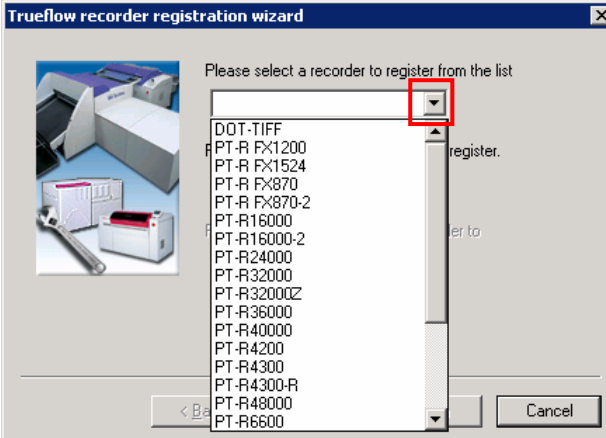


The dialog box is titled "Trueflow recorder registration wizard". It contains the following fields and instructions:

- Please select a recorder to register from the list:** A dropdown menu.
- Please enter a recorder nickname to register:** A text input field.
- Please select SPM type of the recorder to:** A dropdown menu.
- Do you use the Remote Monitoring function?** A dropdown menu with "No" selected.

At the bottom, there are four buttons: "< Back", "Next >", "Finish", and "Cancel".

4. First, click the arrow on the right edge of the top combo box, then select the type of recorder you want to register from the list of recorder types.

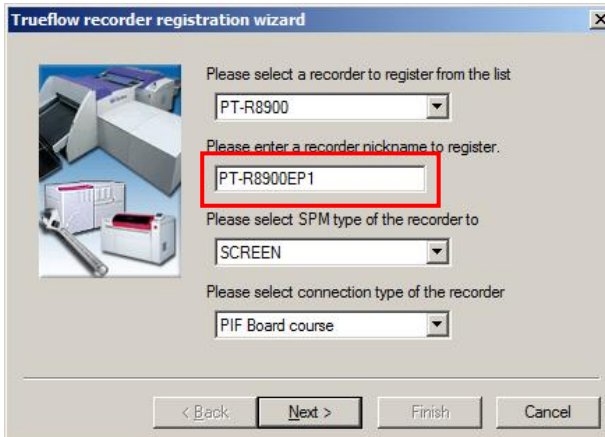


The dialog box is titled "Trueflow recorder registration wizard". The dropdown menu for "Please select a recorder to register from the list" is open, showing a list of recorder types. A red box highlights the dropdown arrow. The list includes:

- DOT-TIFF
- PT-R FX1200
- PT-R FX1524
- PT-R FX870
- PT-R FX870-2
- PT-R16000
- PT-R16000-2
- PT-R24000
- PT-R32000
- PT-R32000Z
- PT-R36000
- PT-R40000
- PT-R4200
- PT-R4300
- PT-R4300-R
- PT-R48000
- PT-R6600

At the bottom, there are three buttons: "< Back", "Next >", and "Cancel".

5. Next, enter a nickname for the recorder in the middle text entry box.

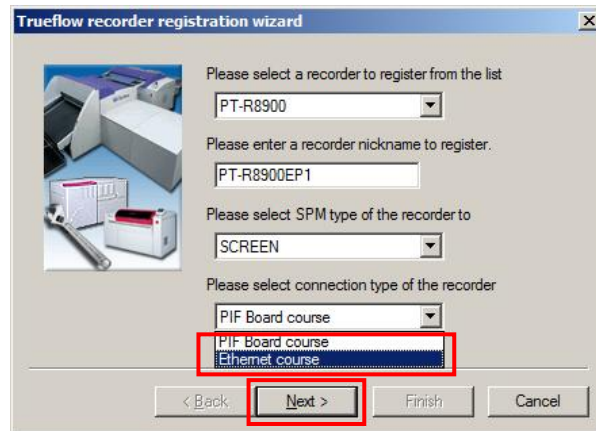


The dialog box is titled "Trueflow recorder registration wizard". The fields and instructions are:

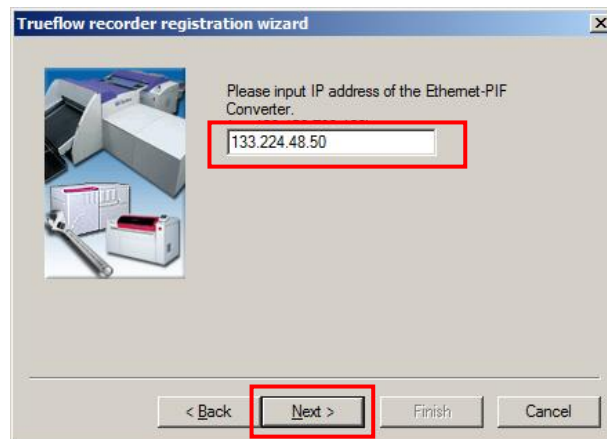
- Please select a recorder to register from the list:** A dropdown menu with "PT-R8900" selected.
- Please enter a recorder nickname to register:** A text input field with "PT-R8900EP1" entered. A red box highlights this field.
- Please select SPM type of the recorder to:** A dropdown menu with "SCREEN" selected.
- Please select connection type of the recorder:** A dropdown menu with "PIF Board course" selected.

At the bottom, there are four buttons: "< Back", "Next >", "Finish", and "Cancel".

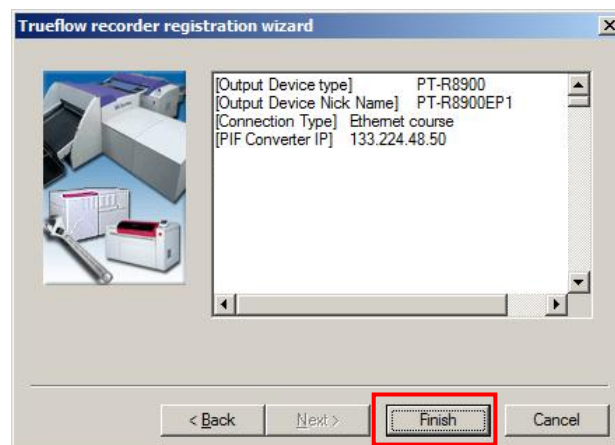
6. Next, Select "Ethernet course" from "Please select connection type of the recorder to" combo box. Click "Next".



8. Input IP address of EP-B101 is connected, click "Next".



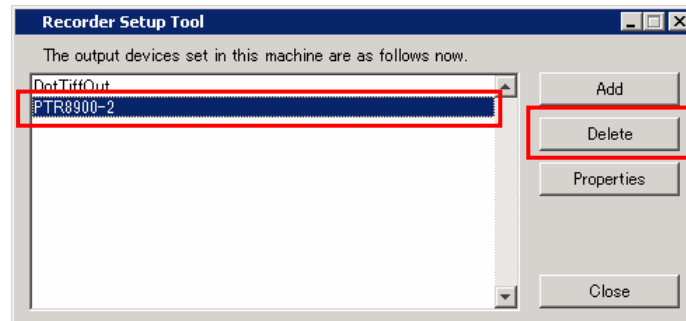
9. A settings confirmation window is displayed. To confirm the settings, click "Finish". To adjust the settings, click "Back".



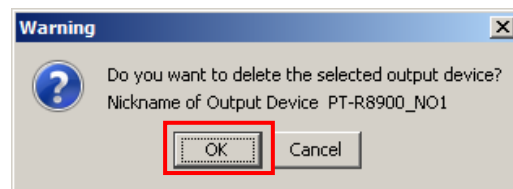
Deleting a Recorder

Operation

1. Select the recorder you want to delete and click "Delete".



2. Click "Yes" button in the following confirmation dialog box.



Appendix. Error Code List

You may receive an error message is displayed in the recorder output via EP-B101. This section describes how to deal with their meanings.

Message	Could not login to PIF conversion BOX. Check the connection status of the communication path, please go to re-output.
Meaning and recommended action	You may not have turned the EP-B101, is not connected EP-B101. Please check the power supply or connection of EP-B101.
Message	PIF conversion BOX is being used by another process or other host.
Meaning and recommended action	Another host or program is being output connected to the first EP-B101. Please wait until the end of the output is running ahead.
Message	The exposure process has been aborted at the output device.
Meaning and recommended action	The exposure process has been interrupted by the recorder.
Message	There was a problem during the transmission of image data. Check the connection status of the recorder, please go to re-output as well as the communication path
Meaning and recommended action	You may communicate with the recorder path or route communication with the EP-B101 was blocked. Please check the power of the recorder as well as the connection status of the EP-B101 or the same communication path.
Message	End data reception notification from the recorder has been in spite of image data during transmission. Recorder output may have terminated incomplete.
Meaning and recommended action	You may have finished in the middle of the exposure process recorder exposure during data transmission. Check the plate of the output, please perform a re-output if there are any problems.
Message	Interrupt (PIF-Bad) occurred at the PIF conversion BOX issue
Meaning and recommended action	A problem occurred while communicating with the recorder at the EP-B101 Please perform a re-output.
Message	Interrupt (PIF-Complete) occurred at the PIF conversion BOX issue.
Meaning and recommended action	A problem occurred while communicating with the recorder at the EP-B101 Please perform a re-output.
Message	Problem was found in the image data transferred.
Meaning and recommended action	Error was found in the CRC check of the exposure data. Exposure data may have been missing.
Message	Either there is no unit's power of output device, cable is not connected.

Please check the connection status.

Meaning and
recommended action

Please check the communication path between the power supply or
EP-B101 recorder and the recorder.