

Recommendations to Optimize Envelope Feeding on OKI C931/941/C942/DP Color Printers

The following recommendations address paper jams due to envelope feeder timing, and help to reduce printer pausing. The results optimize throughput when printing Com-10 envelopes with an envelope feeder attached to the C931, C941 or C942.

1. Update the printer firmware to suite version is A01.35 (or higher). An outline of the update process and a link to the web-site are included near the end of this document.

2. Ensure the following printer menu settings are set at the operator panel:

a) **Menu → Print Adjust → Narrow Paper Speed = Normal 2; Press OK to set and then press On Line**

3. Sleep mode and power save modes can be adjusted to avoid excessive warm-up times in-between jobs. For example, adjust Power Save to 60 minutes:

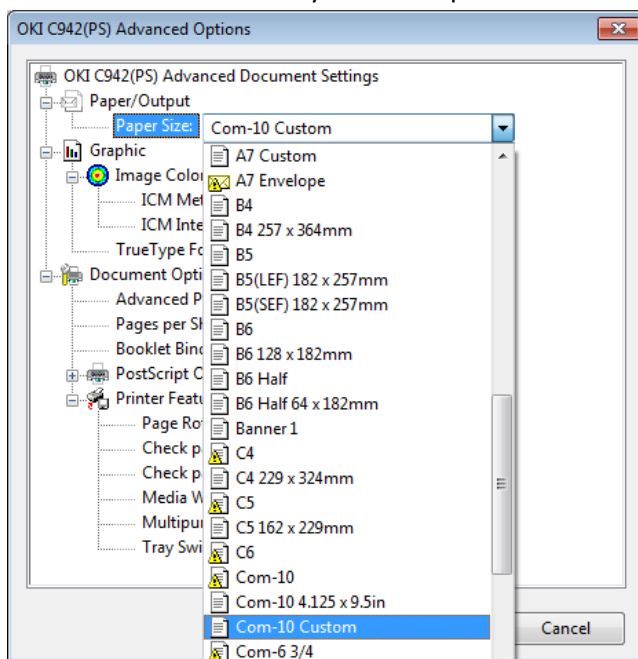
Menu → Menus → System Adjust → Power Save Time → 60 min; Press OK to set and then press On Line

4. Recommended Driver Settings to minimize printer adjustment cycles for Com-10 envelopes:

a) **Media Weight: “Medium Heavy”**

b) **Media Type: “Plain”** (Selecting “Envelope” as the media type runs that printer at a slower speed)

c) **Media Size: “Com-10 Custom”** (appears in the latest PostScript driver) or select Custom Size and enter the dimensions for your envelope.



Select the “Custom” sizes (Com-10 Custom, A7 Custom,...) when using well behaved envelopes to maximize throughput. Selecting non-Custom sizes will run the printer slightly slower and may be helpful for some jobs.

Input Jams

The majority of paper jams at the MP Tray when using an envelope feeder are related to timing differences between the feeder and printer. The latest printer firmware includes a setting to help synchronize the timing:

Menu → Calibration → Specific Media Feed Mode

The default value is OFF. If you encounter frequent jams at the MP Tray, selecting 1 or 2 will allow additional time (milliseconds) for the envelope to be handed off from the feeder to the printer.

Paper Jam Recover Tip

The printer will recover faster from a paper jam if you simply open and close the side access door just below the MP Tray. Opening a front panel used to access toners and drums triggers the printer to perform calibration cycles, which take longer.

Firmware Update

Here are the general steps:

1. Download and install the "Windows" version of the firmware update tool from the following link:

<http://global.okiprintingsolutions.com/FWInterface.nsf/frmmain?OpenForm&Lang=en&RF=http://global.okiprintingsolutions.com/FWInterface.nsf/frmMain?OpenForm&Lang%3Cen%3E>

The utility has a small footprint and runs directly from the EXE file (no install program).

2. Run the utility. On the 4th or 5th screen, you will be requested to "Specify the Update Method." Select the radio button "The latest version of firmware will be downloaded..." and press "Next" to continue.

Search the local network or USB connection. If necessary press the button "Environment Settings" to add the printer's IP address for the Network search range.

The Admin password for the printer is "aaaaaa" (lower case "a" six times)