



KONICA MINOLTA

Giving Shape to Ideas

Designed to Boost Productivity



AccurioPress C6100/C6085

Accurio

ADVANCED • AUTOMATED • ACCURATE.

Konica Minolta continues to expand the future of professional printing through a comprehensive and fully modular group of digital printing technologies and solutions named Accurio. Accurio expands flexibility, increases speed and efficiency, and ensures high print quality for businesses ranging from dedicated printing houses to creative design houses. Accurio includes a line of digital press suites, state-of-the-art inkjet printers, and the software and cloud-based tools for integrating, managing and executing seamless workflow.

Automating operations, expanding the possibilities of on-demand offerings, and providing connectivity to prepress and postpress systems, Accurio maximises use of resources, reduces labour and costs, and raises accuracy and productivity. As customer demands for new services and reduced costs continue to grow, printing businesses are embracing digital technology for solutions beyond paper. Accurio is the single solution for a new era in professional printing.



Introducing Konica Minolta's New Accurio Series

Inkjet Industrial Printing System

AccurioJet

Production Printing System

AccurioPress

Workflow Solution

AccurioPro

The series includes AccurioPress electrophotographic printing systems, AccurioJet high-end inkjet presses, the AccurioPro workflow solution suite and cloud colour management tools.

AccurioPress C6100 SERIES

The AccurioPress C6100 series is designed to deliver all your printing expectation. With improved machine technology, offering higher quality print materials with greater reliability and stability.



AUTOMATION

Auto colour management and front-to-back registration*

* Optional

FLEXIBILITY

Diverse output expands printing service possibilities

HIGH PRODUCTIVITY

High productivity and reliability for fast turnaround

BENEFITS OF ACCURIOPRESS C6100 SERIES

USABILITY

Streamlined operation improves workflow

HIGH-QUALITY

Consistent image output of the highest quality

INLINE FINISHING

A diverse inline finisher lineup for added value

AUTOMATION

Intelligent Quality Optimiser IQ-501

The Intelligent Quality Optimiser IQ-501 continuously monitors and adjusts colour and front-to-back registration during printing. Materials are produced with consistent high quality and requires less manual adjustment.

Higher productivity and less manual adjustment

Auto colour and front-to-back adjustment before printing

Automation of density adjustment, colour management and front-to-back registration reduces time previously spent making adjustments. Since tasks such as manual measurements and input of numerical values are no longer necessary, there are fewer measurement and input errors. Colour profiles can also be created automatically to achieve highly accurate colour matching in less time. Greater output and shorter turnaround.

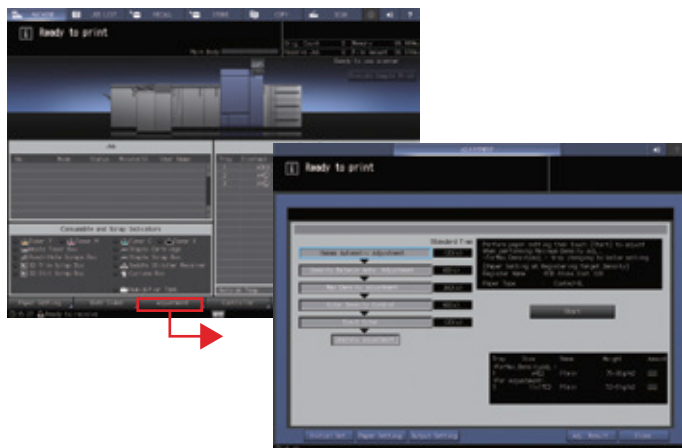
User benefits

- » Less manual adjustment and better productivity
- » Less paper waste from colour and registration errors
- » Less time, effort and skill required by key operators

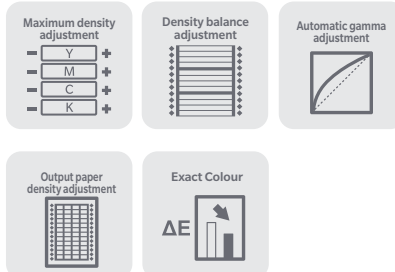


One-step auto adjustment

Common settings such as maximum density, density balance and gamma adjustment are automatically adjusted in a single step to save time and raise accuracy.



One-step auto adjustment





When colour reproduction is critical

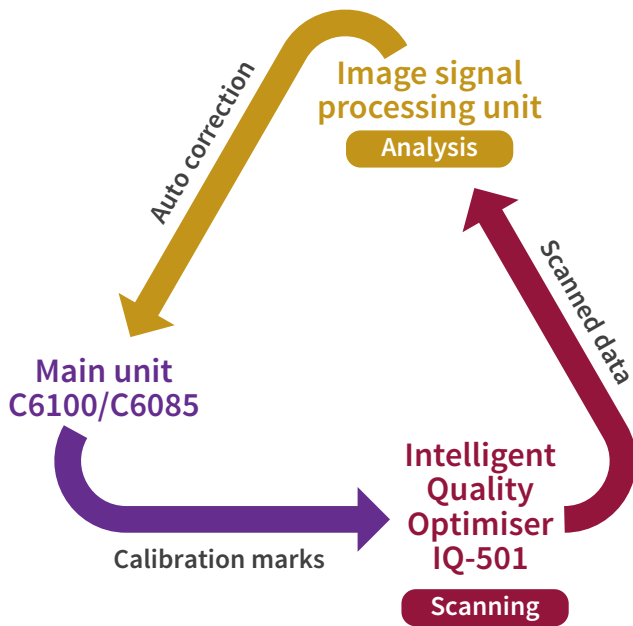
- Apparel catalogues
- Product catalogues
- Company logos, etc.



When registration accuracy is critical

- Business cards
- Shop cards
- Tickets
- Page number positions when bookbinding, etc.

Real-time gradation and front-to-back registration adjustment



Gradation and front-to-back registration are continuously monitored and corrected in real time with no loss in productivity. This feature improves image quality by minimising colour fluctuations, registration misalignment and other errors during printing. It also lowers costs by reducing paper waste.

Accurate colour and registration adjustments are performed in a single pass that includes automatic printing, scanning and analysis of front-to-back registration marks and gradient bars.



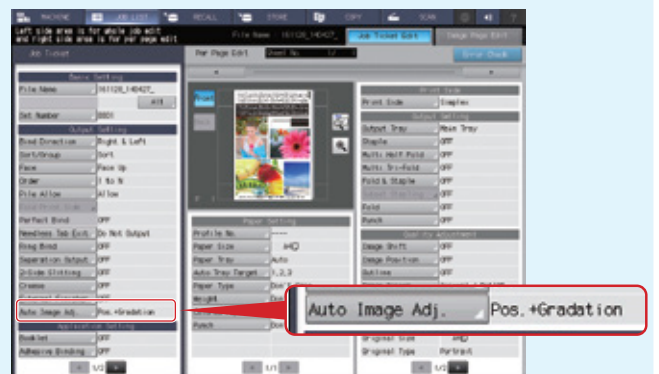
Paper sizes compatible with real-time gradation and front-to-back registration adjustment

Standard sizes

SRA3, SRA4 or paper with margins in the sub-scanning direction

Nonstandard sizes

225mm or more in the sub-scanning direction



HIGH-QUALITY

Consistent image output of the highest quality

Extremely high image quality can be consistently maintained by taking advantage of abundant screens, character quality adjustment functions, and S.E.A.D. V technology utilising the latest Konica Minolta imaging process advances.

Solid image quality and character reproduction

S.E.A.D. V



Konica Minolta's unique Screen-Enhancing Active Digital system combines highly accurate exposure controls, precision pixel placement and advanced screening to achieve high quality and resolution. It also allows flexible processing and image smoothing control to match varying needs.



Rough screen 130L



Standard screen 190L



High-definition screen 270L



FM screen FM-1

Simitri HD^E Toner

This next-generation Simitri HD^E toner with 3-dimensional polymer structure is highly compatible with wide range of media, expands the colour gamut for superior image accuracy and produces more natural skin tones. It also requires less heat for fusing, which helps reduce power consumption.



- Improved colour reproducibility and fade resistance. Enhanced half tone and skin tone quality thanks to improved granularity.
- Produces an effect that improves image quality and reduces energy use. Also allows high-speed processing.

FLEXIBILITY

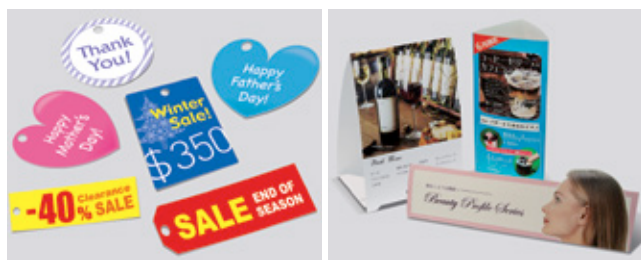
Diverse output expands printing service possibilities

AccurioPress C6100/C6085 expands business potential by supporting 400gsm thick paper, banner printing (max. 1,300mm long), envelope printing and more at affordable cost.

Thick paper compatibility broadens the service range

Up to 400gsm thick

Printing is possible on 400gsm thick paper even during automatic duplexing – with solid stability and no loss of productivity. This capability expands the range of potential applications to include thick-paper tags, stand-up menus, sales promotion tools and more.



Examples of applications using thick paper
Package samples •Tags •Stand-up menus •Promotion tools, etc.



Compatibility with envelope, banner and thick paper printing

(optional)

Envelope and banner printing functions

Optional

A fusing unit dedicated to envelope printing ensures stable, high-quality printing on general-purpose envelopes with minimal folding creases or differences in adhesive strip gloss. Printing of banners up to 1,300mm long, with auto duplexing of banners up to 762mm long, is also top-of-class. The mounted LU-202XLm enables continuous paper feeding of up to 1,000 sheets (up to 762mm) and optional accessories can be added to improve embossed paper printing quality.



USABILITY

Streamlined operation improves the workflow

User-friendly operation increases output efficiency, especially when the optional print controller IC-604 is employed to optimise the workflow for even higher output and improved colour management.

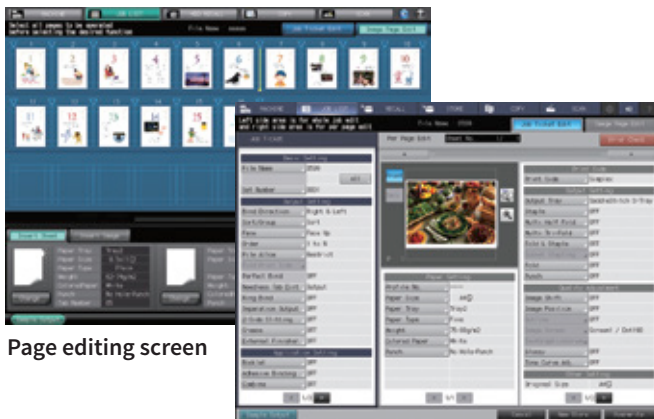
Konica Minolta Print Controller IC-604

(optional)

Improved data handling efficiency

Job control/editing with the main body panel

Management of jobs including job ticketing and pagination is intuitive on the user-friendly screen. Tone curves can be adjusted in a similar manner to that of Colour Centro and a USB mouse can be connected for PC-like operation.



Page editing screen

Job ticket editing screen

Colour management utility

Colour Centro

Colour Centro includes Exact Colour colour management software that enables high-precision 3D colour calibration superior to that of conventional 1D calibration. Editing can be performed and settings can be made for colour verification, G7 calibration, ICC profile creation, etc. without using a PC.

High-precision spectral densitometer

Konica Minolta's high-precision spectral densitometer FD-5BT*1 can be used to perform tasks such as ICC profile creation and calibration. It can also be used as a standalone densitometer with a display in the CTP room. Auto scan spectral densitometer FD-9*1, a higher end product, can also be used with the C6100 Series.

*1: Optional

State-of-the-art printing-reproduction function

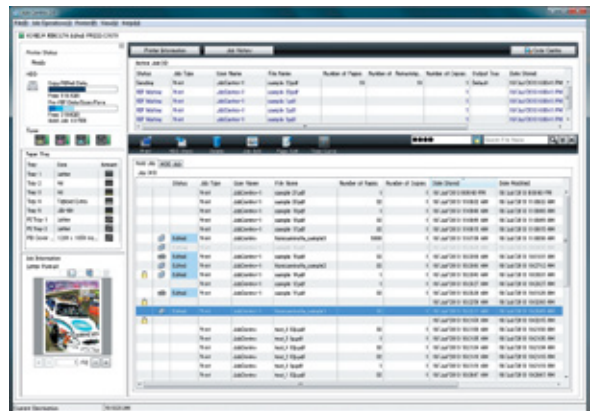
Standard APPE 4.2

APPE 4.2 (Adobe PDF Print Engine 4.2) bypasses the printer driver to directly process PDF files for appropriate reproduction of transparency.

Job management utility

Job Centro 2.0

Job management from PCs is simplified by an outstanding interface with elements such as indicators and thumbnails that enhance operating ease and efficiency.



Seamless offset printing connectivity

JDF compatibility

Thanks to compatibility with JDF, a standard format for the display and transfer of jobs between printing processes, the operator can use familiar CTP workflow RIPs such as APOGEE, EQUIOS and Prinergy*1 for a hybrid workflow with a seamlessly connected offset printer. Digital printing thus becomes an offset printing option that enables more flexible handling.

*1: "APOGEE" is a product of Agfa-Gevaert N.V. "EQUIOS" is a product of SCREEN Graphic and Precision Solutions Co., Ltd. "Prinergy" is a product of Eastman Kodak Company.

HIGH-PRODUCTIVE

High productivity and reliability for fast turnaround

The professional handling capabilities of the AccurioPress C6100 help professional printing companies meet tight deadlines with ease. Whether handling thin or thick paper, it maintains 100% productivity.

Handle high-volume jobs at high speed

Productive printing irrespective of paper thickness

High-speed 100ppm output

Whether printing paper of 52 or 400gsm thickness, the large-diameter upper fusing system and Simitri HD^E toner synergise to output 100 sheets per minute*¹. The large contact area of the fusing belt, optimised for rapid and uniform thermal conduction, contributes to outstanding toner fusion and high productivity.

*¹: For A4 horizontal on C6100 (85 sheets per minute on C6085)

Easy large-volume printing

Large-volume paper feed and output system



The system can be expanded to feed a maximum 13,890 sheets and output a maximum 10,000 sheets using 9 varieties of paper. Paper replenishment and removal, for both paper feeding and output, are possible during printing to simplify large-volume processing tasks.

Highly efficient scanning

High-speed duplex scanner PF-711

The high-speed duplex scanner is ideal for law offices, educational establishments and others that need to scan and store large volumes of documents as data. It reads 75 colour or 80 monochrome pages per minute*¹ with high reliability thanks to a built-in high-speed double-feed detector.

*¹: A4, 300dpi (duplex scanning of 150 colour pages or 160 monochrome pages)

Fast and easy paper settings

Enhanced paper menu and search functions

Default settings are provided for every type of paper and additional settings can be registered to meet every need. Simple settings and user-friendly search functions contribute to easy setup and high productivity.

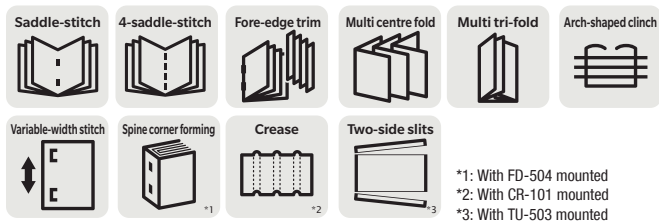


INLINE FINISHING

Sophisticated saddle-stitched bookbinding

T-shape saddle stitcher SD-513

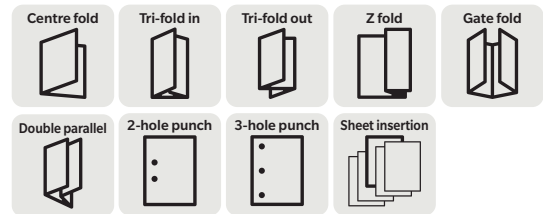
This unit provides all the refined saddle-stitching capabilities of an offset printing bookbinder when combined with Square Corner Forming unit FD-504, creaser unit CR-101 and trimmer unit TU-503.



Double-parallel folding, gate folding and more

Multi-folding unit FD-503

The FD-503 is a multi-function multi-folding unit capable of double-parallel folding, gate folding, centre folding, tri-folding and other tasks. It can quickly handle diverse jobs such as DM production. The unit is also furnished with 2 and 3-hole punching functions and a sheet-insert function. When combined with the PB-503, it can insert Z-folded pages in perfect bound books.



Spine Corner Forming unit FD-504

This unit creates a spine corner for saddle-stitched booklets to reduce booklet swelling and allows adjustment of flat back strength.

Creaser unit CR-101

The creaser unit applies creases to folding lines to prevent the toner from cracking for a neater finish.



Trimmer unit TU-503

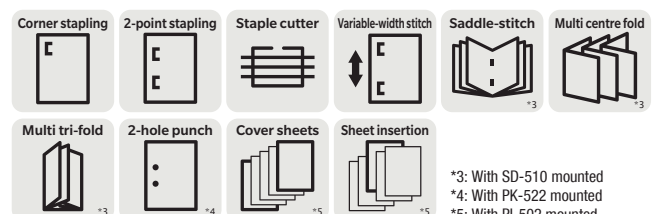
This unit trims both upper and lower edges and can produce full bleed booklets when used in combination with the standard fore edge trimming unit.

Space-saving all-in-one finisher

Staple finisher FS-532

The staple finisher is capable of stapling up to 100 sheets*1 and cutting the excess length from staple legs. With the saddle-stitcher option mounted, tasks such as multi tri-folding and centre folding can be performed in addition to saddle stitching. High paper alignment and a revised paper-feed path ensure a neat finish even for large numbers of stitched sheets. The unit can also be expanded with a punch and post inserter*2.

*1: Stapling for up to 50 sheets of A3 paper. *2: Mount kit MK-732 required for installation. Note: Some combinations of options are not compatible.



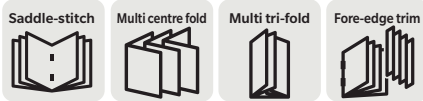
A diverse inline finisher lineup for added value

A wide range of inline finishing options are available that boast top-of-class professional specifications. They efficiently meet the needs of diverse output formats to enable services that can differentiate companies from the competition.

For small-lot manuals, catalogues, etc.

Saddle stitcher SD-506

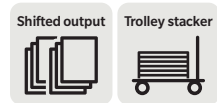
This saddle stitcher can create booklets of up to 50 sheets/200 pages (80gsm). A set-on-saddle mechanism allows stiff, accurate folding that decreases sheet misalignment during binding. Double-parallel and tri-fold functions, as well as a fore-edge cutting function that provides a neat finish, are standard equipped for efficient post-processing.



Ample capacity for high work efficiency

Large-capacity stacker LS-506

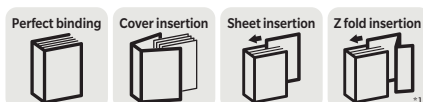
Up to two stacker units that accommodate 5,000 sheets each can be installed side-by-side for a total 10,000-sheet capacity. Finished documents can be removed via cart for easy transport to the next process. A sample ejection function allows quality checks during high-volume printing.



Perfect binding of up to 600 pages

Perfect binder PB-503

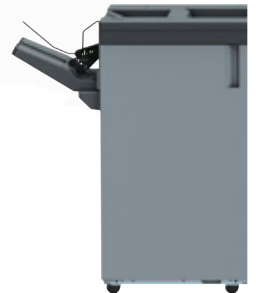
This unit provides a top-of-class perfect binding finish for up to 300 sheets/600 pages of 80gsm thickness up to a total binding thickness of 30mm. Paper up to 216gsm thick can be used for the cover and both printing and gluing can be performed inline. Sophisticated sheet alignment technology realises a neat finish even without three-edge trimming. Completed bound books are stacked automatically on a provided stacking cart.



Low-cost high-capacity output tray

High-capacity output tray OT-510

The capacity of this low-cost output tray has been increased from 500 sheets to 4,200 sheets. It's a highly cost-effective initial investment for users with standalone post-processing equipment.

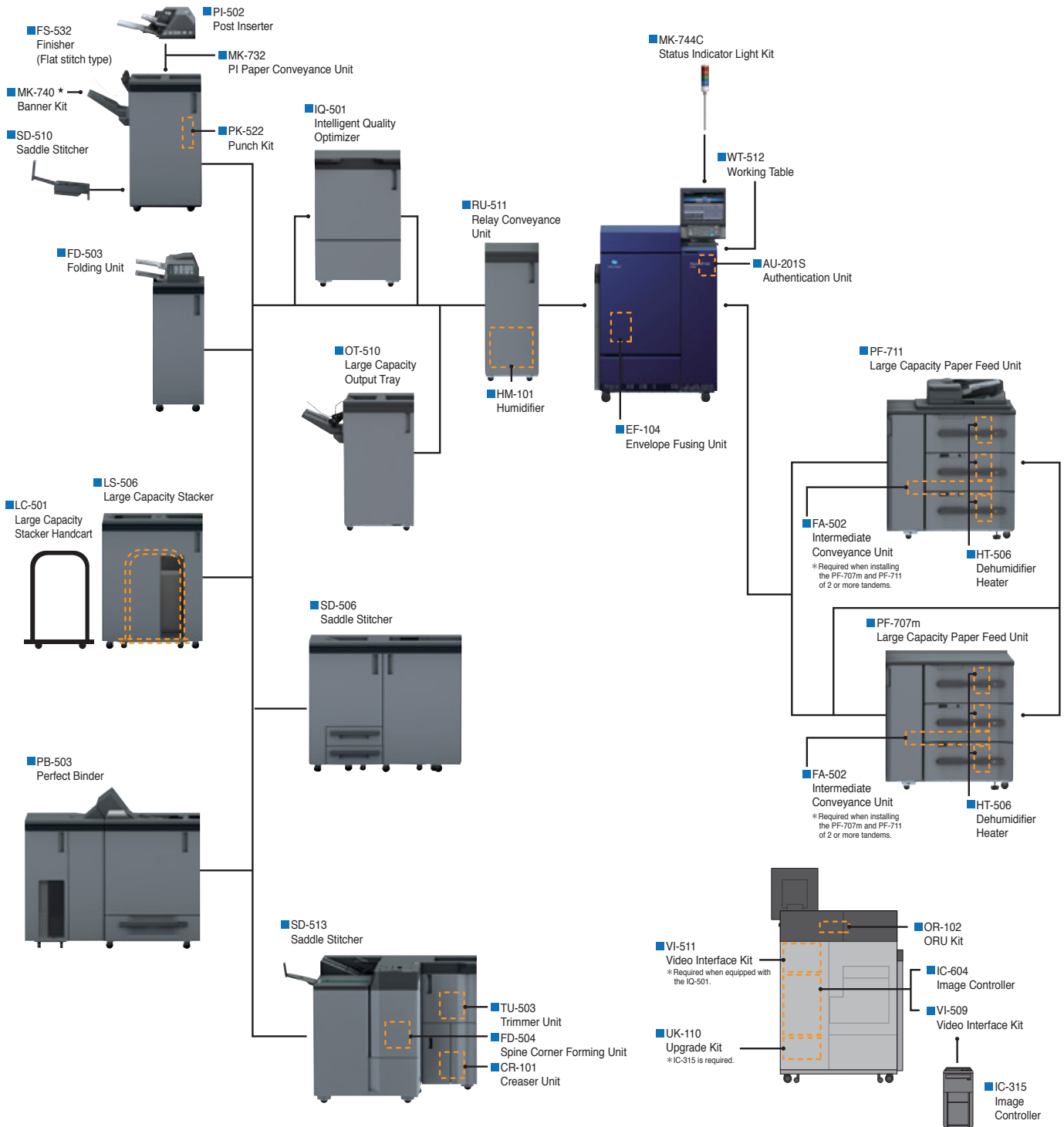


*1: With FD-503 mounted

AccurioPress C6100/C6085 Spec sheet

System Configuration

Dimensions (unit: mm)

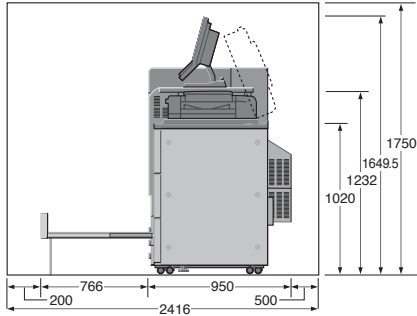


* Scheduled for the 2nd version. Please contact for using in local area.

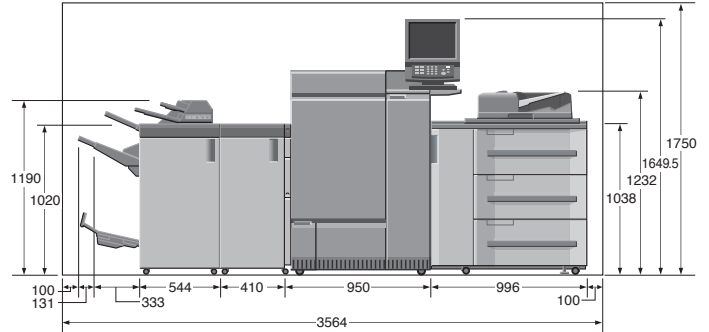
*1 The WT-511 can not be installed when you connect the PF-602m and the PF-707.
 *2 Select one of OC-511 or DF-706. However, it is not for C2070P since it does not have a scanner and the DF function.

Space Requirements

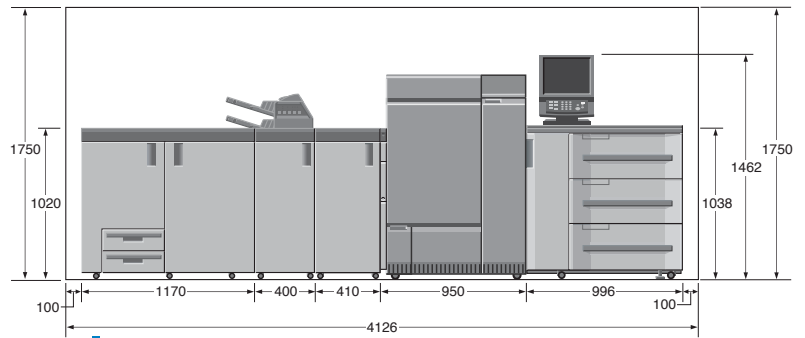
Dimensions (unit: mm)



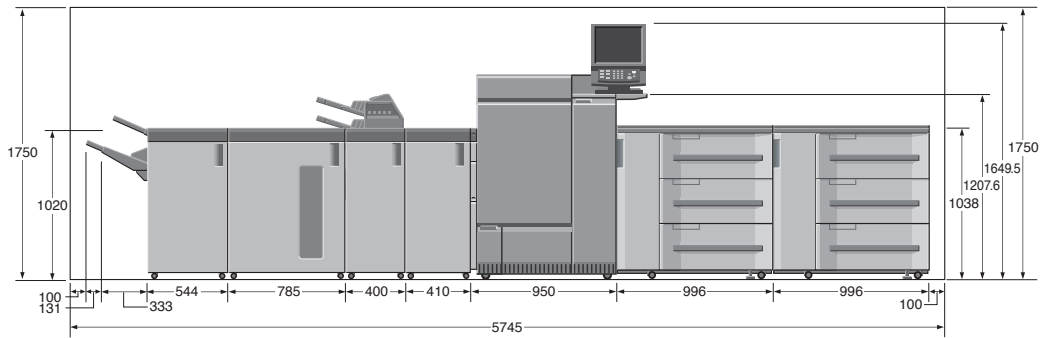
Side View
 AccurioPress C6100/C6085
 SD-506 + RU-511 + Machine + WT-512 + PF-711



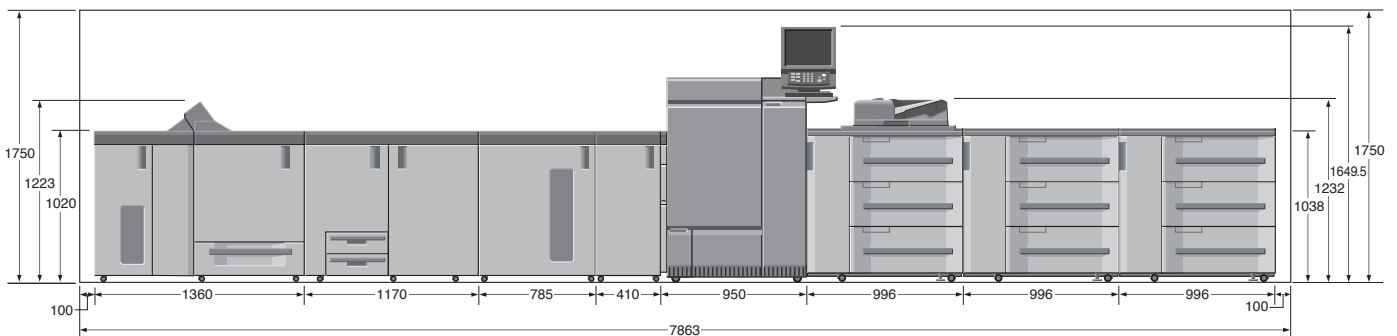
Front View
 AccurioPress C6100/C6085
 FS-532 (PI-502/MK-732/PK-522/SD-510) + RU-511 + Machine + WT-512 + PF-711



Front View
 AccurioPress C6100/C6085 + SD-506 + FD-503 + RU-511 + Machine + PF-707m



Front View
 AccurioPress C6100/C6085 + FS-532 + LS-506 + FD-503 + RU-511 + Machine + WT-512 + PF-707m + PF-707m



Front View
 AccurioPress C6100/C6085 + PB-503 + SD-506 + LS-506 + RU-511 + Machine + WT-512 + PF-711 + PF-707m + PF-707m

► AccurioPress C6100/C6085 General Specifications

		AccurioPress C6100	AccurioPress C6085
Type	Console type		
Copy Method	4-coupled drum tandem laser electrostatic method		
Resolution	1,200 dpi (Equivalent to 3,600 dpi) x 1,200 dpi		
Gradation	8-bit / 256 Gradation		
CPU	Core i5 4570S 2.9GHz		
System Memory Capacity	8GB		
Extended Memory	System memory capacity can be extended up to 12GB with UK-110 or 20GB with IC-604. Additional 4GB with IQ-501 + V1-511.		
HDD	0 (4TB with IC-604 or UK-110)		
Max. Printing Area	321 mm x 480 mm (Banner sheet: 323 x 1195 mm)		
Output Size (S: Short Edge Feed <input type="checkbox"/>)	SRA3, A3, B4, SRA4, SRA4S, A4, A4S, B5, B5S, A5, A5S, B6S, A6S, 13x19, 12x18, 11x17, 9x11, 8 1/2x14, 8 1/2x14S, 8 1/2x11S, 5 1/2x8 1/2, 5 1/2x8 1/2S, 8 1/2x13, 8 1/4x13, 8 1/8x13 1/4, 8x13, 8K, 16K, 16KS, Tab paper (A4, 8 1/2x11) Max. 330.2 mm x 487.7 mm, Min. 100 mm x 139.7 mm		
Image Loss	Max. 4 mm or less for leading edge, Max. 4 mm or less for trailing edge, Max. 3 mm or less for right/left edges		
Warm-Up Time	480 seconds or less		
Continuous Print Speed (A4)	Simplex	100 sides/min or 5,455 sides/h	85 sides/min or 4,636 sides/h
	Duplex	100 sides/min or 5,405 sides/h	85 sides/min or 4,600 sides/h
Paper Weight	52 gsm to 400 gsm (Plain, Fine, Colour Specific) 81 gsm to 400 gsm (Coated)		
Power Source	Inch: 208VAC to 240VAC, 24A, 60 Hz Metric: 220VAC to 240VAC, 25A, 50 Hz / 60 Hz		
Power Consumption	Inch: 5,760W or less / Metric: 6,000W or less (Max. power value when the power system of the main body including option is the highest)		
Dimensions [W] x [D] x [H]	950 mm*1 x 950 mm*2 x 1,319 mm*3, 37-3/8"*1 x 37-3/8"*2 x 52"*3		
Weight	Approximately 440 kg / 970 lb (Main body only)		

*1 The operation panel section, the powder smoke suction box, and the working table are not included.

*2 Rear side duct is included.

*3 The operation panel section is not included.

► AccurioPress C6100/C6085 Printer Controller

Image Controller IC-313

Type	Server
CPU	Core i5 4570 2.9GHz
Memory	4 GB
HDD	1 TB
Page-description Language	Adobe PostScript 3 (3020), PDF 1.7, PPLM v3.0, APPE 3.0, PCL 5/6 emuration
Printing Method	TCP/IP, SNMP, SMB, FTP, LPR, IPP, Bonjour
Applicable OS	Windows Vista*1 / 7*1 / 8.1*1 / 10*1 Windows Server 2008*1 / 2012*1 Mac OS X v10.8 / v10.9 / v10.10 100Base-T / 100Base-TX / 1000Base-T
Interface	200 / 300 / 400 / 600 dpi
Scanner Resolution	PDF, TIFF, JPEG
Data Format	Twain Plug-in
Driver	

*1 Including 64-bit versions.

Image Controller IC-315

Type	Server
CPU	Xeon E5-2637 3.5GHz
Memory	16 GB
HDD	500 GB + 2 x 2 TB
Page-description Language	Adobe PostScript 3 (PS3020), PDF v1.7, APPE 3.0, PDF/VT-2, PPLM v3.0, PCL 5/6 emuration
Printing Method	TCP/IP, SNMP, SMB, FTP, IPP, Bonjour
Applicable OS	Windows 7*1 / 8.1*1 / 10*1 Windows Server 2008*1 / 2008R2*1 / 2012*1 Mac OS X v10.8 / v10.9 / v10.10 / v10.11
Interface	Ethernet (1000BASE-T / 100BASE-TX / 10BASE-T) with IPv6, USB 2.0 / 3.0
Scanner Driver*2	Twain Plug-in
Scanner Resolution*2	200 / 300 / 400 / 600 dpi
Scan Data Format*2	PDF, TIFF, JPEG

*1 Including 64-bit versions.

*2 Only when PF-711 is equipped.

Image Controller IC-604

Type	AIO to the engine (option)
CPU	Conforms with main unit specification
Memory	20 GB (Details: 8 GB (Standard of the main body) + 12 GB (IC-604))
HDD	4 TB (Details: 1 TB x 4)
Page-description Language	Adobe PostScript3 (PS3020), PDF v1.7, APPE v4.2, PDF/VT-2, TIFF v6, PPLM v2.2, PCL-5c, PCL6 v3
Printing Method	TCP/IP/LPR/LPD, Raw Port, socket), IPX/SPX(NDS, Bindery), NetBEUI, IPP, Apple Talk, WSD, Bonjour, SMB
Applicable OS	PS Plug-in: Windows 7 / 8.1 / 10 Windows Server 2008 / 2008R2 / 2012*1 / 2016*1 Mac OS X 10.8 / 10.9 / 10.10 / 10.11 / 10.12 PS PPD*2: Windows 7 / 8.1 / 10 Windows Server 2008 / 2008R2 / 2012*1 / 2016*1 Linux CUPS
Interface	Ethernet (1000BASE-T / 100BASE-TX / 10BASE-T) with IPv6, USB 2.0
Scanner Driver*3	HDD Twain Driver, Real Time Mode Twain Driver
Scanner Resolution*3	200 / 300 / 400 / 600 dpi
Scan Data Format*3	PDF, TIFF, JPEG, XPS

*1 Includes 64-bit.

*2 WHQL is not obtained for the PS PPD driver.

*3 Only when PF-711 is equipped.

► Options

Paper Feeder Unit PF-707m

Paper Size (S: Short Edge Feed <input type="checkbox"/>)	SRA3, A3, B4, SRA4, SRA4S, A4, A4S, B5, B5S, A5, A5S, B6S, A6S, 13x19, 12x18, 11x17, 9x11, 8 1/2x14, 8 1/2x14S, 8 1/2x11S, 5 1/2x8 1/2, 5 1/2x8 1/2S, 8 1/2x13, 8 1/4x13, 8 1/8x13 1/4, 8x13 Tab paper (A4, 8 1/2x11)*1 Max. 330.2 mm x 487.7 mm, Min. 100 mm x 139.7 mm*2
Paper Type	Plain, Fine, Colour, Coated, Envelope, Tab Paper*1
Paper Weight	52 gsm to 400 gsm
Max. Tray Capacity (80 gsm)	Tray (upper / middle): 1,390 sheets / Tray (lower): 1,850 sheets
Power Source	Inch: 120VAC, Metric: 230VAC
Dimensions [W] x [D] x [H]	996 mm x 772 mm x 1,038 mm / 39-1/4" x 30-3/8" x 40-7/8"
Weight	203 kg / 447.4 lb

*1 The tab paper guide is required. Supported only for single side printings.

*2 Use the small guide when the width is shorter than 139.7 mm. Only the 1st tandem is available.

*3 Minimum size of the 2nd tandem is 139.7 mm x 139.7 mm.

Paper Feeder Unit PF-711 (with Scanner unit)

Paper Size (S: Short Edge Feed <input type="checkbox"/>)	SRA3, A3, B4, SRA4, SRA4S, A4, A4S, B5, B5S, A5, A5S, B6S, A6S, 13x19, 12x18, 11x17, 9x11, 8 1/2x14, 8 1/2x14S, 8 1/2x11S, 5 1/2x8 1/2, 5 1/2x8 1/2S, 8 1/2x13, 8 1/4x13, 8 1/8x13 1/4, 8x13 Tab paper (A4, 8 1/2x11)*1 Max. 330.2 mm x 487.7 mm, Min. 100 mm x 139.7 mm
Paper Type	Plain, Fine, Colour, Coated, Envelope, Tab Paper*1
Paper Weight	52 gsm to 400 gsm
Max. Tray Capacity	(80 gsm) Tray (upper / middle): 1,390 sheets / Tray (lower): 1,850 sheets
Scanner Resolution	600 dpi x 600 dpi
Original Type	Sheet, Book, Solid object
Max. Original Size	A3 or 11x17
Copy Magnification	Fixed Magnification Inch: x 1.000, x 2.000, x 1.545, x 1.294, x 1.214, x 0.785, x 0.772, x 0.647, x 0.500 Metric: x 1.000, x 2.000, x 1.414, x 1.189, x 0.840, x 0.707, x 0.500 Zoom Magnification x 0.250 to x 4.000 (Each 0.001 step)
Continuous Copy Count	Up to 9,999 sheets
Power Source	Inch: 120VAC, Metric: 230VAC
Dimensions [W] x [D] x [H]	996 mm x 772 mm x 1,232 mm / 39.21" x 30.39" x 48.50"
Weight	250 kg / 551.2 lb
Document Feeder	Paper Type: Normal original mode / Mixed original mode Paper Size: A3, B4, A4, B5, A5, B6S, 11x17, 8 1/2x11 Capacity: 300 sheets (80 gsm) Scan Speed (A4): Full colour: Simplex 75 ppm / Duplex 150 ppm (A4 horizontal) Black and White: Simplex 80 ppm / Duplex 160 ppm (A4 horizontal) Power Source: Supplied from the main body Dimensions [W] x [D] x [H]: 618 mm x 575 mm x 180 mm / 24-1/4" x 22-5/8" x 7" Weight: Approximately 15.1 kg / 33.31 lb

*1 The tab paper guide is required. Supported only for single side printings.

Relay Unit RU-511

Paper Size	Max. 330.2 mm x 487.7 mm, Min. 100 mm x 139.7 mm
Paper Weight	Straight exit: 52 gsm to 400 gsm / Reversing exit: 52 gsm to 300 gsm
Power Source	Inch: 120VAC / Metric: 220 to 240VAC, 5VDC (Only 5VDC is supplied from the main body)
Dimensions [W] x [D] x [H]	410 mm x 735 mm x 1,020 mm / 16-1/4" x 29" x 40-1/4"
Weight	Approximately 80 kg / 176-1/4 lb

Humidifier HM-101 *Option of RU-511.

Paper Type	Same as the main body.
Power Source	24.5VDC (Supplied from RU-511)

* For Humidifier ON mode, Coated or PrePrinted, Blank Insert Sheet, Embossed, and Embossed2 with the weight under 135 gsm or less cannot be used.

Envelope Fusing Unit EF-104

Envelope Size	C5, C6/5, 6x9-1/2 Max. 245.0 mm x 375.0 mm, Min. 100.0 mm x 148.0 mm
Envelope Weight	70 gsm to 100 gsm
Power Source	Inch: 208VAC to 240VAC, 5/24/36VDC (supplied from the main body) Metric: 220VAC to 240VAC, 5/24/36VDC (supplied from the main body)
Max. Power Consumption	3,800W or less
Dimensions [W] x [D] x [H]	258 mm x 784 mm x 306 mm / 10-1/8" x 30-7/8" x 12"
Weight	Approximately 31.5 kg / 69-1/2 lb

Intelligent Quality Optimiser IQ-501

Paper Size	Max. 330.2 mm x 487.7 mm, Min. 100 mm x 139 mm
Paper Type	Plain, Fine, Coated, Colour
Paper Weight	52 gsm to 400 gsm
Compatible Printing Speed	150 ppm (A4/Letter)
Power Source	100VAC to 240VAC, 24.5VDC (Only 24.5VDC is supplied from the main body)
Max. Power Consumption	700W or less
Dimensions [W] x [D] x [H]	663 mm x 696 mm x 1020 mm / 26-1/8" x 27-3/8" x 40-1/8"
Weight	Approximately 184 kg / 405-5/8 lb

Large Capacity Stacker LS-506

Paper Size	Stacker tray mode: Max. 330.2 mm x 487.7 mm, Min. 210 mm x 148 mm Sub tray mode: Max. 330.2 mm x 487.7 mm, Min. 100 mm x 139.7 mm
Paper Weight	Stacker tray mode: 52 gsm to 400 gsm Sub tray mode: 52 gsm to 400 gsm
Paper Capacity(80 gsm)	Stacker tray mode: Max. 5,000 sheets Sub tray mode: 200 sheets (Z-Fold: 20 sheets, Centre-Fold: 40 sheets)
Power Source	100VAC to 240VAC, 5VDC (Only 5VDC is supplied from the main body)
Max. Power Consumption	150W or less
Dimensions [W] x [D] x [H]	785 mm x 723 mm x 1,020 mm / 31" x 28-1/2" x 40-1/8"
Weight	Approximately 110 kg / 242-1/2 lb

Finisher FS-532

Paper Size	Staple mode: Max. 330.2 mm x 487.7 mm, Min. 203 mm x 139.7 mm Straight / Shift mode: Max. 330.2 mm x 487.7 mm, Min. 100 mm x 139.7 mm
Paper Weight	Staple mode: 52 gsm to 300 gsm Straight / Shift mode: 52 gsm to 400 gsm
Paper Capacity (80 gsm)	Max. 4,500 sheets (Main + Sub tray)
Stapling Mode Types	Corner stapling: Horizontal, Vertical / 2-point stapling: Centre
Power Source	24VDC (Supplied from the main body)
Max. Power Consumption	144W or less
Dimensions [W] x [D] x [H]	544 mm x 723 mm x 1,070 mm / 21-1/2" x 28-1/2" x 42-1/4"
Weight	74 kg / 163-1/4 lb

Post Inserter PI-502 *Optional Mount Kit MK-732 with FS-532 is required.

Paper Size (S: Short Edge Feed <input type="checkbox"/>)	Upper Tray: A4, A4S, B5, B5S, A5, 9x11, 8 1/2x11, 8 1/2x11S, 5 1/2x8 1/2, 16K, 16KS Lower Tray: SRA3, A3, B4, SRA4S, A4, A4S, B5, B5S, A5, 13x19, 12x18, 11x17, 9x11, 8 1/2x14, 8 1/2x11, 8 1/2x11S, 5 1/3x8 1/2, 8 1/2x13, 8 1/4x13, 8 1/8x13 1/4, 8x13, 8K, 16K, 16KS
Paper Capacity	Max. 200 sheets (80 gsm)
Power Source	24.5VDC (Supplied from the main body)
Dimensions [W] x [D] x [H]	540 mm x 620 mm x 220 mm / 21-1/4" x 24-1/2" x 8-3/4"
Weight	Approximately 11.7 kg / 25-3/4 lb

Punch Kit PK-522 *Option of FS-532.

Hole Pitch	Metric area: 80 mm (2 holes / 4 holes), 21 mm, 70 mm, 21 mm (Swedish 4 holes) Inch area: 70 mm (2 holes), 108 mm (3 holes)
Paper Weight	60 gsm to 300 gsm
Paper Size (S: Short Edge Feed <input type="checkbox"/>)	2 holes: A3, B4, SRA4S, A4, A4S, B5, B5S, A5, A5S, 11x17, 9x11, 8 1/2x14, 8 1/2x11, 8 1/2x11S, 5 1/2x8 1/2S, 5 1/2x8 1/2, 8 1/2x13, 8 1/4x13, 8 1/8x13 1/4, 8x13, 8K, 16K, 16KS 3/4 holes: A3, B4, A4, B5, 11x17, 9x11, 8 1/2x11, 8K, 16K
Power Source	24.5VDC (Supplied from the main body)
Dimensions [W] x [D] x [H]	156 mm x 592 mm x 180 mm / 6-1/4" x 23-1/4" x 7-1/4"
Weight	4.5 kg / 9.92 lb

Saddle Stitcher SD-510 *Option of FS-532.

Paper Size (S: Short Edge Feed)	Saddle stitch Centre-Fold Fold & Staple Three Fold-in	SRA3, A3, B4, SRA4S, A4S, B5S, 13x19, 12x18, 11x17, 8 1/2x14, 8 1/2x11S, 8 1/2x13, 8 1/4x13, 8 1/8x13 1/4, 8x13, 8K, 16KS Max. 330.2 mm x 487.7 mm, Min. 120 mm x 240 mm
Fold Mode	Saddle Stitch (330 mm or more in length)	2 to 5 sheets: 35 sets, 6 to 10 sheets: 23 sets, 11 to 25 sheets: 15 sets
Tray Capacity	Centre-Fold	1 to 5 sheets: 35 sets
	Three Fold (less than 330 mm in length)	1-sheet fold: 50 sets, 2-sheet fold: 40 sets, 3-sheet fold: 30 sets
Sheets Saddle Stitch		Max. 25 sheets
Sheets Folded	Centre-Fold	Max. 5 sheets
	Three Fold-in	Max. 3 sheets
Power Source		Supplied from the main unit
Dimensions [W] x [D] x [H]		281 mm x 596 mm x 530 mm / 11" x 23-1/2" x 20-7/8"
Weight		Approximately 26.4 kg / 58-1/4 lb

*Usable paper types will vary according to function and paper exit destination.

Saddle Stitcher SD-513

Type	Saddle-stitching machine with edge-trimming and multi-folding functions		
Saddle-stitching Mode	Paper Size (S: Short Edge Feed)	SRA3, A3, B4, A4S, B5S, 12x18, 11x17, 8 1/2x14, 8 1/2x11S, 8 1/2x13, 8 1/4x13, 8 1/8x13 1/4, 8x13, 8K, 16KS Max. 330.2 mm x 487.7 mm, Min.*1 120 mm x 257 mm	
	Paper Weight	52 to 300 gsm	
	Max. saddle-stitched sheet count (For ordinary paper)	52 to 64 gsm: 50 sheets, 65 to 81 gsm: 35 sheets, 82 to 91 gsm: 30 sheets, 92 to 130 gsm: 20 sheets, 131 to 161 gsm: 15 sheets, 162 to 209 gsm: 10 sheets, 210 to 244 gsm: 5 sheets, 245 to 300 gsm: 3 sheets	
	Staple position	Staple pitch (54 to 185.5 mm)	
	Staple method	In-line clinch method	
4-point stitching*2	Compatible paper size	A3, 11 x 17	
	Stitching position	Evenly distributed at a pitch of one-quarter of the main scanning direction length: However, the pitch is adjustable (±10 mm)	
	Modes available for parallel use	Creaser (one crease at the centre), splitter, spine corner forming	
Cutting Mode	Paper Size (S: Short Edge Feed)	SRA3, A3, B4, A4S, B5S, 12x18, 11x17, 8 1/2x14, 8 1/2x11S, 8 1/2x13, 8 1/4x13, 8 1/8x13 1/4, 8x13, 8K, 16KS Max. 330.2 mm x 487.7 mm, Min.*1 120 mm x 257 mm	
	Paper Weight	52 to 300 gsm	
	Max. number of sheets cut	50 sheets (80 gsm) x 2 = 100 sheets	
	Sheet-cutting amount	5 to 40 mm (Cutting of a finished booklet length of less than 120 mm is not possible)	
	Cutting point	Edge	
	Cutting scrap box capacity	1,700 sheets (ordinary paper)*3 *With box-full detection function	
Multi-folding Mode	Paper Size (S: Short Edge Feed)	Centre fold SRA3, A3, B4, A4S, B5S, 12x18, 11x17, 8 1/2x14, 8 1/2x11S, 8 1/2x13, 8 1/4x13, 8 1/8x13 1/4, 8x13, 8K, 16KS Max. 330.2 mm x 487.7 mm, Min.*1 120 mm x 257 mm	
	Paper Weight	Centre fold 52 to 300 gsm Trifold 52 to 91 gsm Crease + Trifold*4 80 to 216 gsm	
	Overlapped Sheet Count	Centre fold 52 to 81 gsm: 5 sheets, 82 to 130 gsm: 3 sheets, 131 to 300 gsm: 2 sheets Trifold 52 to 81 gsm: 5 sheets, 82 to 91 gsm: 3 sheets Crease + Trifold 80 to 216 gsm: 1 sheet	
	Through Pass/Sub-tray Mode	Paper Size (S: Short Edge Feed)	SRA3, A3, B4, SRA4S, SRA4, A4, A4S, B5, B5S, A5, A5S, B6S, A6S, 12x18, 11x17, 9x11, 8 1/2x14, 8 1/2x11S, 5 1/2x8 1/2, 5 1/2x8 1/2, 8 1/2x13, 8 1/4x13, 8 1/8x13 1/4, 8x13, 8K, 16KS Max. 330.2 mm x 487.7 mm, Min.*1 100 mm x 139.7 mm
	Paper Weight	52 to 400 gsm	
Paper Storage Capacity	Sub-tray*6	Single sheet 200 sheets (for 80 gsm sheets) Trifold, centre fold 20 sheets	
	Booklet tray*6	Saddle-stitching mode 2 to 10 sheet saddle-stitched sheets: 30 sets, 11 to 25 saddle-stitched sheets: 18 sets, 26 to 50 saddle-stitched sheets: 10 sets Multi-centre fold mode 30 booklets	
		Multi-centre fold mode	1 folded sheet: 40 sets, 2 folded sheets: 20 sets, 3 folded sheets: 13 sets, 4 folded sheets: 10 sets, 5 folded sheets: 13 sets
	Trifold tray*6	Multi-trifold mode	1 folded sheet: 40 sets, 2 folded sheets: 20 sets, 3 folded sheets: 13 sets, 4 folded sheets: 10 sets, 5 folded sheets: 13 sets
Mountable Options	FD-504, CR-101, TU-503		
Power Source	100VAC, 24/5VDC (some power is supplied from the main body)		
Max. Power Consumption	350W or less		
Dimensions [W] x [D] x [H]	1,241 mm x 1,431 mm x 1,020 mm / 48-3/4" x 56-1/2" x 40-1/4" *The width does not include the booklet tray (236 mm).		
Weight	Approximately 337 kg / 743 lb		

*1 Finish dimensions after cutting are compatible with CD jacket size (120 x 120 mm).

*2 The minimum number of required sheets is specified.

*3 For 10 saddle-stitched booklets of A3 or A4 with a paper weight of 80 gsm and cut amount of 2 mm.

*4 There may be some crease line and fold misalignment when paper of less than 105 gsm is used.

*5 Size differs depending on the main body installed.

*6 With box-full detection function

Creaser Unit CR-101 *Option of SD-513.

Paper Size	Crease + saddle-stitching mode, crease + multi-fold mode, Crease + sub-tray mode, crease + through-pass mode: Conforms to SD-513 saddle-stitching / multi-centre fold mode specifications. Crease + multi-trifold mode: Conforms to SD-513 multi-trifold mode specifications. Crease + prefect-binding mode: Conforms to PB-503 cover specifications.	
Paper Weight	80 to 350 gsm (The max. paper weight conforms to crease-mode combination specifications.)	
Crease Count	1 to 4 creases (restrictions apply depending on the mode.)	
Setting Unit	0.1 mm	
Min. Crease Interval	1.0 mm	
Power Source	24/5VDC (Supplied from SD-513)	
Max. Power Consumption	25W or less	
Dimensions [W] x [D] x [H]	211 mm x 460 mm x 137 mm / 8-1/4" x 8-1/8" x 5-3/8"	
Weight	6.8 kg / 15 lb	

Trimmer Unit TU-503 *Option of SD-513.

Paper Size	Slit + saddle-stitching mode, slit + multi-centre fold mode, slit + sub-tray mode, slit + straight mode, slit + shift mode: Conforms to SD-513 saddle-stitching mode specifications*1. Slit + multi-trifold mode: Conforms to SD-513 multi-trifold mode specifications*2. Slit-perfect binding mode: Conforms to PB-503 cover specifications.	
Paper Weight	52 to 300 gsm	
Cut Position	Top and bottom edge of booklet	
Cut Amount	52 to 61 gsm: 14 to 26 mm, 62 to 300 gsm: 10 to 26 mm Independent top and bottom settings (difference within 10 mm)	
Cutting Scrap Box Capacity	4,000 scraps of 13 mm (W) x 420 mm (L), paper weight 80 gsm	
Power Source	24/5VDC (Supplied from SD-513)	
Max. Power Consumption	50W or less	
Dimensions [W] x [D] x [H]	304 mm x 630 mm x 381 mm / 12" x 24-3/4" x 15"	
Weight	18.7 kg / 41-1/4 lb, Scrap box: 1.0 kg / 2-1/4 lb	

*1 The paper length in the main scanning direction after slitting is 120 mm or more.

*2 Regulated according to the paper size before slitting.

Spine Corner Forming Unit FD-504 *Option of SD-513.

Paper Size	Conforms to SD-513 saddle-stitching mode specifications	
Paper Weight	52 to 216 gsm	
Sheet Processing Capacity	Max.	Conforms to SD-513 saddle-stitching mode specifications
	Min.	5 sheets
Cover	Short-grain paper only	
Power Source	24/5VDC (Supplied from SD-513)	
Max. Power Consumption	60W or less	
Dimensions [W] x [D] x [H]	643 mm x 258 mm x 157 mm / 25-1/4" x 10-1/4" x 6-1/4"	
Weight	13 kg / 28-5/8 lb	

Folding Unit FD-503

Hole Pitch	Metric area: 80 mm (2 holes / 4 holes) Inch area: 70 mm (2 holes), 108 mm (3 holes)	
Fold Types	Centre-fold, Three fold-in, Three fold-out, Double parallel, Z-fold, Gatefold	
Paper Size (S: Short Edge Feed)	Hole Punch	2 holes: SRA3, A3, B4, SRA4S, A4, A4S, B5, B5S, A5, A5S, 12x18, 11x17, 9x11, 8 1/2x14, 8 1/2x11, 8 1/2x11S, 5 1/2x8 1/2, 8 1/2x13, 8 1/4x13, 8 1/8x13 1/4, 8x13, 8K, 16K, 16KS 3/4 holes: SRA3, A3, B4, A4, B5, 12x18, 11x17, 9x11, 8 1/2x11, 8K, 16K
	Folding mode	Max. 305 mm x 458 mm, Min. 210 mm x 279 mm
	Post insertion mode	Max. 330 mm x 483 mm, Min. 182 mm x 140 mm
	Straight mode	Max. 330 mm x 483 mm, Min. 100 mm x 140 mm
Paper Weight	Punch	52 gsm to 216 gsm
	Folding mode	Centre-Fold / Three Fold-in / Three Fold-out / Z-Fold: 52 gsm to 130 gsm Double Parallel / Gatefold: 52 gsm to 91 gsm
	Post insertion mode	50 gsm to 300 gsm
	Straight mode	52 gsm to 400 gsm
	Sub tray mode	52 gsm to 400 gsm
Power Source	100VAC to 240VAC, 5VDC (Only 5VDC is supplied from the main body)	
Dimensions [W] x [D] x [H]	400 mm*1 x 723 mm x 1,231 mm / 15-3/4" x 28-1/2" x 48-1/2"	
Weight	Approximately 130 kg / 285-1/2 lb	

*1 Width including the primary (main) tray (with the edge closed): 667 mm

Width including the primary (main) tray (with the edge pulled out): 784 mm

Saddle Stitcher SD-506

Paper Size (S: Short Edge Feed)	Saddle Stitch/Trimming	SRA3, A3, B4, SRA4S, A4S, B5S, 12x18, 11x17, 8 1/2x14, 8 1/2x11S, 8 1/2x13, 8 1/4x13, 8 1/8x13 1/4, 8x13, 8K, 16KS Max. 330.2 mm x 487.7 mm, Min. 182 mm x 257 mm
	Folding	Centre-Fold: SRA3, A3, B4, SRA4S, A4S, B5S, 12x18, 11x17, 8 1/2x14, 8 1/2x11S, 8 1/2x13, 8 1/4x13, 8 1/8x13 1/4, 8x13, 8K, 16KS Three Fold-in: A4S, 8 1/2x11S Max. 324 mm x 463 mm, Min. 182 mm x 257 mm
	Straight (Sub Tray)	Max. 330 mm x 487 mm, Min. 100 mm x 140 mm
Paper Weight	Saddle Stitch / Trimming: 52 gsm to 244 gsm, Centre-Fold: 52 gsm to 244 gsm, Three Fold-in: 52 gsm to 91 gsm, Straight (Sub Tray): 52 gsm to 400 gsm	
Stitching Capacity	Max: 50 sheets (52 gsm to 81 gsm)	
Trimming Capacity	50 sheets (80 gsm)	
Fold Type	Centre-Fold, Three Fold-in	
Folding Capacity	Centre-Fold: 30 sets, Three Fold-in: 20 sets	
Power Source	100VAC to 240VAC, 5VDC (Only 5VDC is supplied from the main body)	
Max. Power Consumption	270W	
Dimensions [W] x [D] x [H]	When the stack output tray closed: 1,170 mm x 775 mm x 1,020 mm / 46" x 30-1/2" x 40-1/4"	
Weight	280 kg / 617-1/4 lb	

Perfect Binder PB-503

Paper Weight	Body: 64 gsm to 105 gsm (81 gsm to 209 gsm for cover sheets)	
Paper Size	Body: Max. 307 mm x 221 mm, Min. 139 mm x 210 mm Cover Paper: Max. 307 mm x 472 mm, Min. 139 mm x 279 mm	
Bound Pages (80 gsm)	Approximately 300 sheets max. (less than 30mm thick) / Approximately 10 sheets min.	
Warm-up Time	Approximately 20 min.	
Power Source	100VAC, 5VDC (Only 5VDC is supplied from the main body)	
Max. Power Consumption	1000W or less	
Dimensions [W] x [D] x [H]	1,360 mm x 775 mm x 1,223 mm / 53-1/2" x 30-1/2" x 48-1/4"	
Weight	Approximately 270 kg / 595-1/4 lb	

Large Capacity Output Tray OT-510

Paper Weight	52 gsm to 400 gsm	
Paper Size	Max. 330 mm x 487 mm, Min. 100 mm x 139.7 mm Max. 330.2 mm x 1200 mm, Min. 100 mm x 139.7 mm*1	
Paper Capacity (sort / group mode)	488 mm or less	Max. 4200 sheets (80 gsm, 0.03109 m ² to 0.06237 m ²)
	489 mm to 762 mm*1	Max. 300 sheets (128 gsm to 135 gsm)
	763 mm or more*1	Max. 100 sheets (128 gsm to 135 gsm)
	Envelope	100 sheets or more
Paper Capacity (offset sort / offset group mode)	Max. 1500 sheets (72 gsm to 81 gsm, 0.03109 m ² or more)	
Power Source	24VDC (supplied from the main body)	
Max. Power Consumption	144W or less	
Dimensions [W] x [D] x [H]	544 mm x 723 mm x 1,070 mm / 21" x 28-1/2" x 42"	
Weight	Approximately 55 kg / 121 lb	

1 Paper of 489 mm length is available only when the MK-740 plate is installed.



FOR THE EARTH. FOR THE FUTURE.

Regional Headquarters

Konica Minolta Business Solutions Asia Pte Ltd.

30 Pasir Panjang Road, #06-32

Mapletree Business City

Singapore 117440

Tel: +65 6361 2800

Fax: +65 6361 2888

Email: enquiry@konicaminolta.sg

www.konicaminolta.asia/business

Presence in the region

Bangladesh . Bhutan . Brunei . Cambodia . Indonesia . Laos . Malaysia . Mauritius . Myanmar . Philippines . Singapore . Sri Lanka . Thailand . Vietnam

About Konica Minolta Business Solutions Asia

Konica Minolta Business Solutions Asia is transforming the workplace of the future with its customer-centric solutions and hardware for the digitally connected world. We are committed to create new values for the society with our expertise. From information management to technology enabling tools, the solutions help businesses improve time to information, support mobility, and optimise business processes with workflow automation. Konica Minolta, Inc. has also been named to the Dow Jones Sustainability World Index for five years in a row. For more information, please visit <http://www.konicaminolta.sg/business/>



Cert No:
12 310 50050 TMS
ISO/IEC 27001:2013



Cert No: 2015-2-2299
ISO 9001:2008
Cert No: 2015-06-38
ISO 14001:2004

