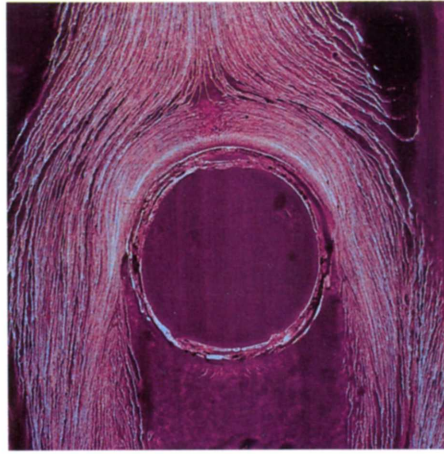


*The trick is to allow the parts making up a current to flow long enough to form clear tracks.*

*We proceeded in a similar manner when we took the pictures of flow patterns for this issue in the flow-technical laboratory of the M.A.N.-ROLAND testing unit at Offenbach. We used the accepted colour layer method but employed a special composition of colours.*

*This method today enables us to obtain informative images of the flow conditions we are investigating. The results will not always look as attractive as in these pictures where we employed additional colours to create added liveliness.*



*If our readers have gained an idea of flow conditions in the air streams of a printing machine, then the effort has been well worth while!*