

# Prinect PDF Toolbox v4

## New Features



**IMPORTANT NOTICE:**

The information in this document is confidential and proprietary to Heidelberg Druckmaschinen AG and may be legally privileged.

Any review, printing, copying, use or distribution of this document is prohibited without the written allowance of Heidelberg Druckmaschinen AG and may be a criminal offense. If you have received this document in error, please notify Heidelberg Druckmaschinen AG immediately.



# Table of Contents

## Chapter 1. Components of PDF Toolbox

- System Requirements . . . . . 1
- Installation of PDF Toolbox . . . . . 1
  - Import/Export Settings .....2
- Prinect Trap Editor . . . . . 3
- Prinect Color Editor . . . . . 3
  - Prinect Color Editor: Color Management .....3
  - Image Information .....4
  - Prinect Color Editor: Spot Colors .....5
- Prinect Coating Editor . . . . . 5
- PDF Assistant. . . . . 6
  - Geometry Control.....6
  - Assemble Pages .....6
  - Screening Selector.....6
- Prinect Versioning Assistant. . . . . 7
- PDF Assistant. . . . . 7
  - PDF Report .....7
  - PDF Navigator .....7
  - Preflight Sets.....8



## Chapter 1: Components of PDF Toolbox

### System requirements:

PDF Toolbox version 4.0 requires Adobe Acrobat version 7 or 8. It is strongly recommended that you update to 8.1 if using version 8. There is no longer support for Acrobat 6; and Acrobat 9 is not yet supported.

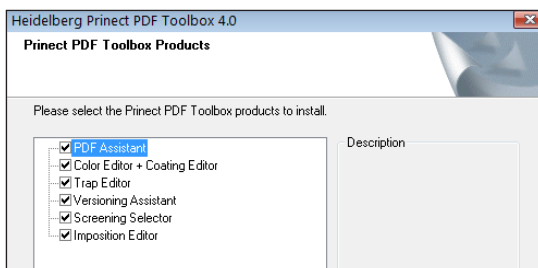
PDF Toolbox version 4.0 consists of the following products:

- **PDF Assistant v3.0**  
(PDF Report, PDF Report Navigator, Geometry Control, Separation Control, Fast View, Assemble Page, Move Pages, and Register Control)
- **Color Editor v4.0**
- **Coating Editor v4.0** – now a standalone plugin/product
- **Trap Editor v6.0**
- **Versioning Assistant 1.0 – NEW**
- **Screening Selector v2.0**
- **Imposition Editor v1.3 – NEW**

Each product can be sold and licensed individually. Therefore, in theory at least, a customer could have a mixture of version 3 and version 4 licensing for different products. Licensing, as before is handled via the central License Server (i.e. on the Prepress Manager server), or via a local Super Trap/Trap Editor dongle.

### Installation of PDF Toolbox

All products are installed through one common installer; the choice of products is made at the beginning of the installation process.



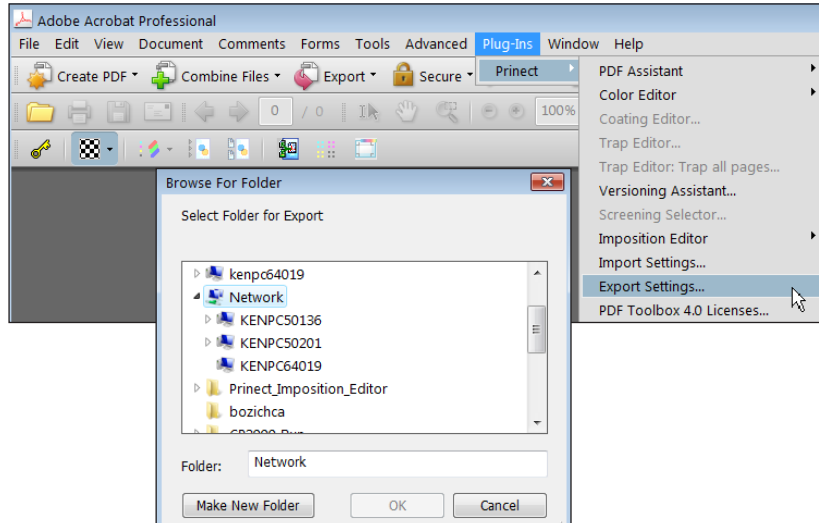
Beginning with version 4 of the Prepress Manager, when you install a Prinect Cockpit on a workstation, the PDF Toolbox is automatically installed at the end of the Cockpit installation. Should you need to reinstall it at a later time or on a different workstation, the **PDF Toolbox installer** can also be found on the Prepress Manager server in the **PTConfig\CockpitUpdate** folder.

Because of this automatic installation with Cockpit, it is recommended that before you start the Cockpit installation you **remove all previous versions** of PDF Toolbox. Do this in **Add/Remove Programs** on a **PC** workstation. On a **Mac** workstation, simply go to the **Acrobat application**, right click and choose **show Package Contents**, then locate the **plugins folder**, then the **Heidelberg folder** and **delete** it. Note: This will not remove any custom settings, only the actual plugins.

### Import / Export Settings

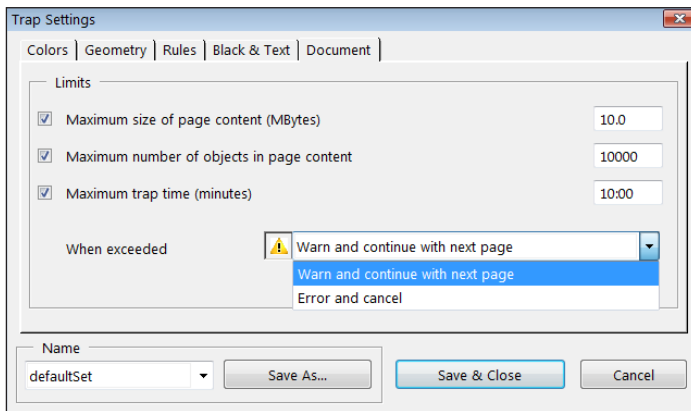
It is now possible to export your customized settings to a defined location, then re-import them if necessary, or import them at another workstation. In this way you can be sure that settings at all workstations are identical.

Choose **Export....** from under the Prinect plugins menu in the Acrobat toolbar. You will be prompted to **choose a destination**. Browse to the desired location. Click Make New Folder if you wish to make a new folder to store the settings.



## Prinect Trap Editor

The Trap Editor has some new options found under Trap Settings. There is a **new tab** called **Document**. Here you can set some rules regarding page complexity and trapping times. You can specify the **maximum size of page content**, the **maximum number of objects** in page content, or the **maximum time** that should be spent trapping. Choose what should happen when one of these criteria are met on a page; **Warn and continue** with next page, or **Error and cancel** the trapping.

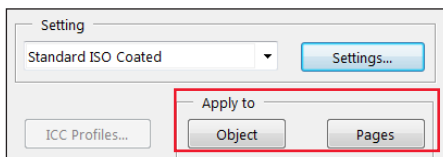


## Prinect Color Editor

The Varnish tool which you know from the Color Editor of PDF Toolbox v3 is now a separate tool. It has been renamed the **Prinect Coating Editor**, and can be licensed separately.

### Prinect Color Editor: Color Management

In the **Apply to** section of the Color Management screen, you can choose to apply the color management settings to either **Objects or Pages**. Objects could include images or gradients, but not specific graphics or text elements. Simply click on the object you wish to convert, then click the Objects button to apply the color conversion.



Under Settings, the Device Colors tab has been renamed to **Device Colors / Device Link** to make well known the fact that Device Link profiles can be specified here as well.

In the Device Colors tab, you can now set the **preservation of primary and secondary colors** in addition to the preservation of black. Primary colors are those that cannot be mixed from other colors; i.e. Cyan, Magenta and Yellow. Secondary colors are mixed from primary colors; i.e. Green made from Cyan and Yellow. By using this setting, you can insure that colors made at 100% are preserved at 100% during any color space conversion.

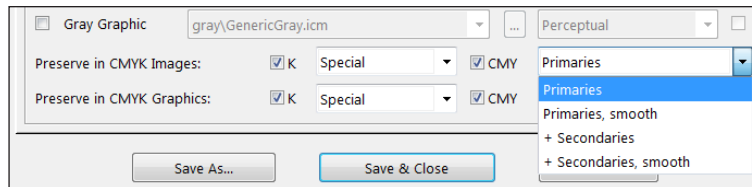
The available settings are as follows:

**Primaries** – 100% values are preserved.

**Primaries, smooth** – a smooth transition will be made.

**+ Secondaries** – the 100% values of the secondary colors will also be preserved.

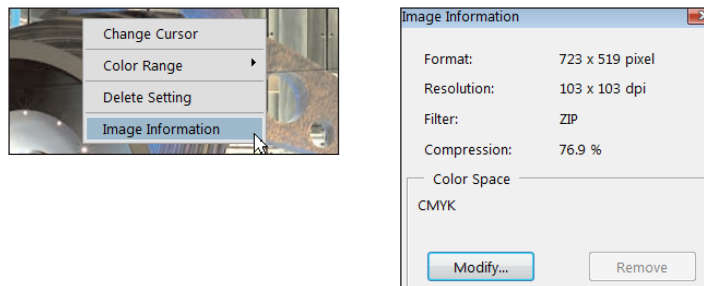
**+ Secondaries, smooth** – a smooth transition for the secondary colors will be made.



In the **Overprint tab** of settings, you can now choose to set **knockouts separately for colors** and **for gray or black**.

### Image Information

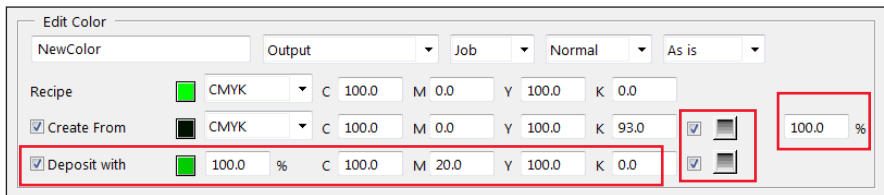
If you right click on an image, you can choose Image Information from the contextual menu. This will provide parameters such as **format**, **resolution**, **compression**, **filter** and **color space**. You can use the Modify button to replace an attached ICC profile with a different profile, or remove the attached ICC profile altogether.



## Prinect Color Editor: Spot Colors

There are *three new additions* to the Spot Colors menu.

Under **Create From**, you will find a **gradient icon**. If you enable this function, all colors that are lighter than the chosen color will be included in the conversion. In other words, gradations from 0% up to the chosen percentage will be included. Without this selected, only the exact color that is chosen will be converted. Note that this setting applies only to text and graphics; nor gradients or images.

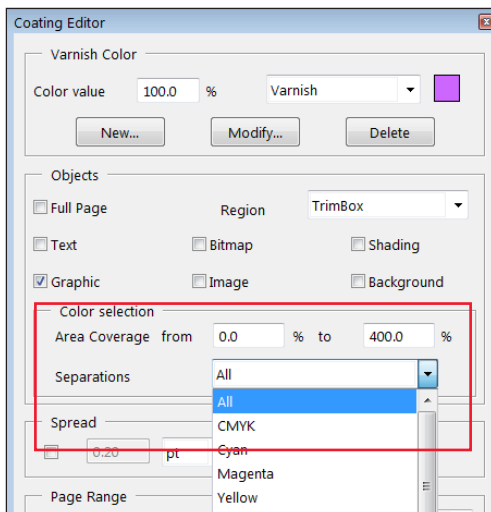


You can now **specify a percentage** for the **spot color**. For example, you can create a color and have that color be 75% of the spot color. Prior to this version, it was always created at 100%.

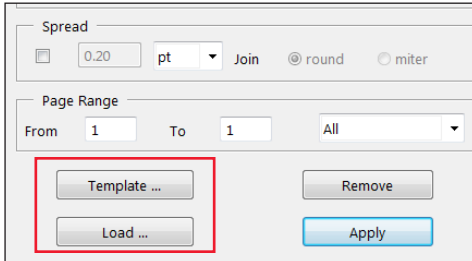
The line **Deposit with** allows you to easily **add CMYK values to a spot color** for a more intense color and higher color density for example. You can specify if it should be applied only at 100% of the spot color or proportionally.

## Prinect Coating Editor

The Coating tool is now a separate product and can be purchased and licensed separately. The Coating Editor has the same functionality as the former Varnish tool. Also you can limit the coating creation by using the area coverage, and also by specifying a certain separation.



You can now **save** a **Coating as a template** and then apply that template to other documents as often as needed. The Montage positioning tool allows you to move or scale the template when applied to other documents.



## PDF Assistant

### Geometry Control

In the **Scale tab**, you can now **scale the entire page including the content**, or **only the page**. This can be useful if you need to create a trim area by enlarging the content for example.

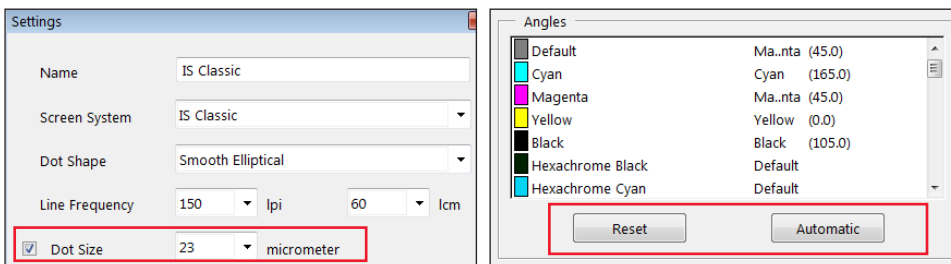
### Assemble Pages

If you press the **SHIFT key** while clicking the **Montage button**, the selected page will be assembled below the current page instead of above it.

### Screening Selector

There are new features that allow you to **Reset** the settings for a screening system. After angle substitution, this sets all of the angles back to the basic settings associated with the selected screen system. **Automatic** can be used to assign the available angles to all of the spot colors.

You can also **specify a Dot Size** for a screening system.



## Prinect Versioning Assistant

This is a new tool for checking and preparing data that are to be produced with versioning, or specifically for different languages.

The Versioning Assistant compares the base elements of different documents and checks if they are identical. When doing this, it does not take black into account. Any differences found are highlighted in a selectable color and can be easily seen on the preview displayed.

There are **four basic steps** in using the Versioning Assistant.

1. **Select the files to be used.** These file versions can be already combined in one file, or in separate documents, but the files must contain the same number of pages, be of the same format, and contain the same number of colors.
2. **Create and Check Versions.** Specify a master version from which the colors CMY should be taken. Specify colors Black or Spot or both which are version specific. Set the appropriate settings about whether version is text only or all elements, and choose a file name and extension for the versions.
3. **Compare the results.** Check the Result of Comparison of Base Elements to see what differences may have been found in the documents. You can open the files and view side by side. Precise differences down to the pixel level can be seen.
4. **Split the document.** This will separate composite PDF files into a base version and the different language versions.

The **Preview function** can be used to view the base version with the version file.

## PDF Assistant

### PDF Report

The old PDF Report has been replaced entirely by a new Preflight tool, consisting of the **PDF Report** and the **PDF Navigator**. There are now over 80 checkpoints with extensive options for configuration and correction. Problems that are found are now displayed interactively in the report. In the Navigator, you can filter what you want to see according to errors or warnings. Comments can be created for easy tracking.



**Custom Preflight sets** can be created and saved, and imported into Prepress Manager.

**Categories** for document checking and correcting include the following:

- **General** – Specify if you want a report generated, and where to store it.
- **Document** – Check things like the version of PDF, write protection, and file size.
- **PDF/X** – Check if the PDF conforms to the PDF/X standards.
- **Pages** – Check for trim box and how it is set, orientation, media and crop box, number of pages, empty pages and pages that are separated.
- **Images** – Check resolution of color images, grayscale images, and bitmap images. Also check for image compression, OPI comments, and alternate images.
- **Fonts** – Check if fonts are embedded, if Courier is used, if multiple fonts have the same ID, and check for minimum font size. Also check for different types of fonts used; i.e. Multiple master, TrueType, OpenType, Type 1, Type 1 CID, or Type 3.
- **Colors** – Check for RGB colors, colors with ICC Profiles, calibrated gray, DeviceN colors, the color All inside a trim box and colors where R=G=B or C=M=Y, K=0. Check dot area of images. Check spot colors with conflicting names or different definitions, number of spot colors, old style Pantone color name or illegal Pantone color name. Check for overprinting White or Gray, or for spot colors that overprint or any other color.
- **Content** – Check for transparency used, transfer functions used, line weight, flatness, or other unwanted non-printable information that may be in the PDF file.

