



Prinect Prepress Manager v4

Prinect Prepress Manager v4.0

New Features



Print Media Academy

IMPORTANT NOTICE:

The information in this document is confidential and proprietary to Heidelberger Druckmaschinen AG and may be legally privileged.

Any review, printing, copying, use or distribution of this document is prohibited without the written allowance of Heidelberger Druckmaschinen AG and may be a criminal offense. If you have received this document in error, please notify Heidelberger Druckmaschinen AG immediately.



Table of Contents

Installation and Licensing

System Requirements	1
New Licensing Options	1
One Installer for All Components	2
General Cockpit Changes	2
Improvements in Launching.....	2
Improvements in Job Handling	3

Changes in Administration

Users	3
Preferences	4
Planned Tasks	4
Migrate Jobs	4
Archive Jobs	4
Stop Jobs	4
Resources	5
Color Tables	5
Preflight Profiles.....	5
External Hotfolder	6

Changes in Queues

Filter Queues	6
-------------------------	---

Changes in Jobs List View

Column Sets.	7
Grouping Table.	8
Navigating the Grouping	9
Filters	9



Changes in the Job View

Product Description 10

Job Settings 10

Prepress Tab 11

 View Properties11

 Page Geometry12

 Page Properties12

 Layout List View.....12

 Layout Thumbnail View.....13

 Sheets.....13

Changes in the Sequence Templates

Qualify Sequence. 13

Prepare Sequence 14

Copy Surface PDF 14

Assemble PDF 14

Send Assembled PDF 14

Impose PDF 15

Job Export 15

Installation and Licensing

System requirements:

Adobe Acrobat Professional version 7, 8 or 9 is required on each Cockpit workstation. There is no longer support for Acrobat 6; Acrobat 9 is supported with 4.0 SP2 and higher.

Supported operating systems for Cockpit workstations include:

- Windows 2003 Server (SP2)
- Windows 2003 Server R2 (SP2)
- Windows Vista Business
- Windows XP Professional (SP2)
- Mac OS X v10.4.11 or higher (Tiger)
- Mac OS X 10.5.2 or higher (Leopard)

Hardware requirements have not changed from the previous version. 2GB of RAM and Gigabit ethernet are very strongly recommended.

For full functionality and compatibility, Prepress Manager requires compatible versions of all connected software; i.e. Prinect Signa Station 4.x, PDF Toolbox 4.x, Prinect MetaDimension 7.x and Prinect MetaShooter 4.x.

New Licensing Options

Certain new features in Prepress Manager are licensable options. These include:

- **Versioning** and the **Versioning Assistant Plugin** (single or site license)
- **Coating Editor** for on-the-fly creation of varnish plates (single or site license)
- **Prinect Archiver** for archiving to DVD, Disk or Tape from any PC workstation



One Installer for All Components

The new installer has been simplified. Except for the Oracle Common Database, all components for a complete Integration Manager are always installed. Licensing determines what can be used. Only Engines with a valid license will start.

All Cockpits are now **Production Cockpits**; there are no separate Prepress Manager or Pressroom Manager Cockpits. User permissions control what a user sees and can use. Later this year a View Cockpit will also be available.

The **Cockpit extensions** (located in PTConfig\CockpitExtensions) are loaded depending on what user rights have been assigned to the login user. These extensions are for things like Content Manager, Change Requests, Press Presetting and Reporting and Scheduling.

General Cockpit Changes

Improvements in Launching

When Cockpit launches it now shows a **progress bar** across the bottom of the splash screen. If there is a problem you might be able to tell which component is causing the problem. A good example might be if the MDS does not respond, you will see that in the progress bar, and be able to terminate the launch.



Unreachable servers will no longer slow the Cockpit start down. All computers that the Prepress Manager recognizes are listed under **Administration \ System \ Cockpit**. You can see the computer and status listed under the **server list**.



Improvements in Job Handling

When you initiate certain types of processing on a job, you will be offered the option to **Run in Background**. This will allow you to continue working while the job processes.

The Jobs list and its display has been significantly improved in version 4. Jobs are now displayed more quickly and the job list response is almost instantaneous when changes are made. The need to have jobs grouped in small groups of 100 jobs or less is eliminated. There is now **no restriction on the number of jobs in a group**; in fact organizing jobs in **groups** is now totally **optional**. For this reason the New Group button is missing from the Jobs List window, and is only available under the File Menu.

Changes in Administration

Users

User management has been somewhat simplified in that there is now an option to use the same password in Cockpit as the workstation operating system uses. This means that when passwords are required to change every 90 days for example, it is no longer necessary to also change it in Cockpit. It will be automatically recognized. The same user name and password that exists in the operating system must be used when you login to Cockpit.

To use this feature simply enable the **Password for OS Login** check box when you create a new user.

If the workflow includes Data Terminals which require that a user have a unique **Employee ID** number, that number can now be entered directly in the Create User dialog box. It is no longer required that you go into Properties to create this ID.

In the **User Properties** it is possible to **select a language** to be used with this account. So in theory different users could use different languages in the Cockpit based on their login.



Preferences

In addition to the Output Profile, you can now **specify a Process Standard** in Preferences under the Default Job Settings section. This process standard will then be included in the Job Settings of every job created. The process standard would need to be created in Color Toolbox and saved in the MDS, then it would be available for assignment here. Prepress Manager cannot manage the process standard information.

There is also a new preference in the Warnings section that will generate a **warning** when a submitted sheet contains **pages that have not been through a Prepare** sequence. This warning is activated by default.

Planned Tasks

The new **Planned Tasks** tab allows you to **schedule** certain job-related **tasks** that either need to repeat, or need to happen at a certain time. The **Timer Engine** monitors this scheduling and forwards the instructions to the appropriate application; i.e. Cockpit Server, the Message Service, etc. No special license is required to take advantage of the scheduling function; however, only users with Administrator permissions have the right to create and manage the tasks.

The following types of tasks can be created:

- **Migrate Jobs** – This will perform the migration of the job JDFs after an update process.
- **Archive Jobs** – Based on certain job states and time lapses, jobs can be scheduled to automatically archive. You can control when the archive process starts, how long it should run, and which sequence template should be used.
- **Stop Jobs** – Jobs that have been inactive for a certain length of time, or whose due date has been exceeded by a certain amount of time can be stopped and their status changed to finished.



Other types of requests controlled by the timer include a followup email regarding approval due times or approvals past due.

Resources

Color Tables – New color tables have been added. The 2006 Pantone tables are deactivated by default. A warning can be set in the Preflighter to warn or stop jobs if old style Pantone color names are included in the files. You can now activate or deactivate a color table simply by using a check box.

Preflight Profiles – Profiles that are created in PDF Toolbox can now be imported and used in Cockpit. Default profiles are already included with the installation, as well as previous Enfocus Pitstop profiles. Profiles from Pitstop are designated with a .ppp extension and are displayed in red; profiles from Heidelberg's preflighter are designated with a .hpp extension and displayed in blue. Pitstop Action Lists have the file extension of .eal and are displayed in green.

Profiles made in PDF Toolbox are stored in the following locations:

Windows – C:\Documents and Settings\All Users\Application Data\Heidelberg\PDF Toolbox\PreflightSets

Mac – Users\Shared\Heidelberg\PreflightSets

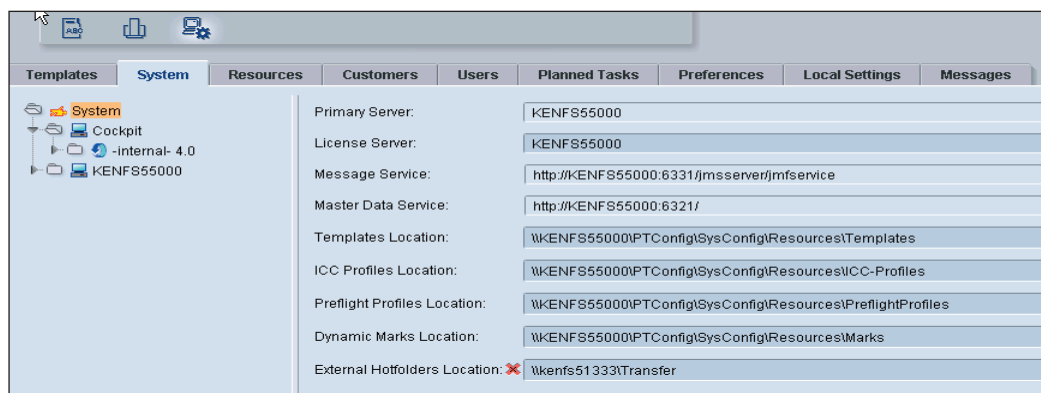
To be used in Cockpit, they should be copied to **PTConfig\SysConfig\Resources\Preflight-Profiles**; or you can use the Import function from the Preflight Profiles tab to import them.



External Hotfolder

A new entry in the System tab allows you to specify an **External Hotfolders Location**. This allows employees who are not Cockpit users and do not have permissions in the Prepress Manager environment to use hotfolders and drop files for Prepress Manager jobs.

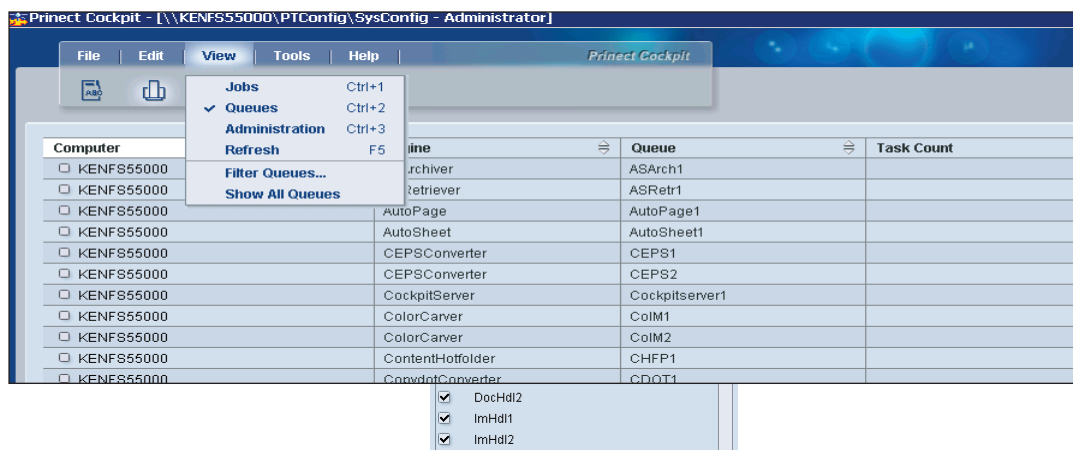
To use this function, define a shared directory in the environment where the external hotfolders will be located. Be sure the correct permissions are assigned to this location. Define this location (via UNC path) in the External Hotfolders Location box in the System tab. Restart the ContentHotFolder engine after you do this. You can then **activate the use** of this external hotfolder in the **Qualify sequence**. See Changes to Sequence Templates later in this document.



To insure error-free communication and be sure the hotfolders are always available, the computer where the hotfolders reside should be made part of the Prepress Manager neighborhood.

Changes in Queues

Queues can now be **shown or hidden** as desired. Deselected queues will not be visible in the list. From the Queues view, choose **View > Filter Queues...** to see a list of all queues. Uncheck the ones you do not wish to see in the list and click OK. Use the **View > Show All Queues** option to once again display all of the queues in the list.



If you **right click** in the **Queue window**, you can **display** the queues **by cluster**; for example all queues (engines) that can create varnish.

Changes in the Jobs List View

Many visual and functional changes have been made to the Cockpit Jobs List view.

- New **Grouping Table** provides new sorting and filtering options.
- **New column sets**.
- **Empty directories** (groups) appear **dimmed** in the list.
- **New Group** button is gone; it exists only under **File > New > Job Group...** or by using the shortcut **Ctrl + G**.
- Menus in the Job List view now show only entries that can be applied in the job list.
- Menus in an open Job window show only entries that can be carried out in the open job.

Column Sets

Due to the improved search and filtering capabilities, there are two new default column sets. The first is **Classic**, and displays the group and job view that we are all used to.

Job Group									
Job Status: All									
Job number	Job name	Job Status	Job Flags	Processing Status	Workflow Status				
PRJOBS (16 0)									
2008-04-23 (0 12)									
2008-05-21 (0 1)									
07-Demo (0 1)	Travels	Idle		Warning		32 / 32	0 / 32		
2008-06-18 (0 1)									
08-1005 (0 1)	08-1005	Setup				0 / 2	0 / 2		
2008-06-19 (0 1)									
08-1006 (0 1)	My Job	Setup				0 / 16	0 / 16		
carolb (5 7)									
Curriculum (0 4)									
0001_cb (0 1)	Travel Guide	Idle		Warning		32 / 32	1 / 32		
0002_cb (0 1)	Apple Brochure	Suspended		Warning		8 / -	0 / -		
0002_DL (0 1)	Apple Brochure...	Idle		Aborted		4 / -	0 / -		
01_test (0 1)	travel	Idle		Warning		32 / 32	0 / 32		

The new **Flat list** set shows a flat job list, without reference to any group or job home location. Be aware that if you delete jobs from this view, the corresponding group will not be deleted.



Job number	Customer Job ID	Job Status	Processing Status	Workflow Status	Job Flags		
0001_cb	0001_cb	Idle	Warning			32	32 / 32
0002_cb	0001_cb	Suspended	Warning			-	8 / -
0002_DL	0002_DL	Idle	Aborted			-	4 / -
0004		Idle	Warning			10	6 / 10
00090		Idle				330	0 / 330
01_test		Idle	Warning			32	32 / 32
07-Demo		Idle	Warning			32	32 / 32
08-1005		Setup				2	0 / 2
08-1006		Setup				16	0 / 16
11111		Idle	Warning			32	16 / 32
1213455		Idle	Warning			-	8 / -
12233545		Idle	Warning			20	20 / 20
12342		Idle	Aborted			48	48 / 48
12345124		Idle	Warning			16	4 / 16
123456		Idle	Aborted			16	16 / 16
13579		Idle	Aborted			32	32 / 32

In either view if you hold down the Ctrl key and select a column, you can further define several sorting criteria. A little number will appear in the column showing the defined order.

Grouping Table

The new Grouping Table allows *sorting according to any desired columns and attributes*. This makes the interface and job list very adaptable and flexible, and the results are instant. Sorting starts from left to right and you can drag and drop any column to any desired position.

Job number	Job name	Job Status	Job Flags	Processing Status	Workflow Status
PRJOBS	(16 / 0)				

For example, to sort jobs by Customer, start with the Flat List column set view. Activate the Customer Name column if it is not already active. Then click on the Customer Name column head and drag it to top grouping position. Jobs will immediately be grouped in the list according to their customer name. Note that a customer name must have been assigned to the job(s).

Job number	Customer Job ID	Job name	Job Status	Processing Status
Customer name : 'B'	(0 3)			
Customer name : 'D'	(0 1)			
Customer name : 'E'	(0 2)			
Customer name : 'H'	(0 8)			

To further categorize the jobs by Due Date, click the Due Date column head and drag it up to the Grouping Table area. The job list now further divides under each customer by the job due date.

Job number	Customer Job ID	Job name	Job Status	Processing Status
Customer name : 'B'	(2 0)			
Due Date : Older	(0 1)			
654321		56-Page Book	Idle	Aborted
Due Date : ?	(0 2)			
07-Demo		Travels	Idle	Warning
08-1006		My Job	Setup	
Customer name : 'D'	(1 0)			
Due Date : ?	(0 1)			



You can drag and drop as many column head sorting criteria as you wish and place them in any order. Results are displayed instantly. If you decide to remove a criteria, simply drag and drop it back to the column head position.

Instead of the drag and drop method, you can also just **right click** on a **column head** to select and group it, or right click on a grouping to remove it. Also by right clicking in any column head you can access the customize menu to select or deselect column heads to be displayed.

Navigating the Grouping

Using the contextual menu, you can **Collapse All groups**, or **Expand All**. Pressing the **arrow keys** will also navigate through the group list. The up and down arrows will scroll through the group structure without opening or closing anything. The right arrow on a closed group will open it; the right arrow on an open group will select the entry below it. The left arrow works in just the opposite way.

Filters

The new fast filter replaces the previous filter dialog interface. The entire job list can now be filtered in almost any way desired. Filtering is done similar to the way the grouping table is defined. Drag and drop a displayed column to the first filter field above the jobs list. Additional filters are added by dragging the desired column and adding it to the existing filter. Filter sequence is always left to right. Certain columns such as Job Flags, Workflow Status, Job Status and Due Date can not be filtered, but all except Workflow Status can be used as grouping criteria.

Customer name		Due Date	Job number	123456		
Job number	1	Customer Job ID	2	Job name	Job Status	Processing Status
Customer name : 'H'	(1 0)					
Due Date : ?	(0 1)					
123456				123456_BarGuide	Idle	Aborted

Multiple Custom Column Sets including Grouping and Filtering criteria can be saved.

This Grouping table and Filtering criteria capability has been implemented in many windows and views of the Cockpit.

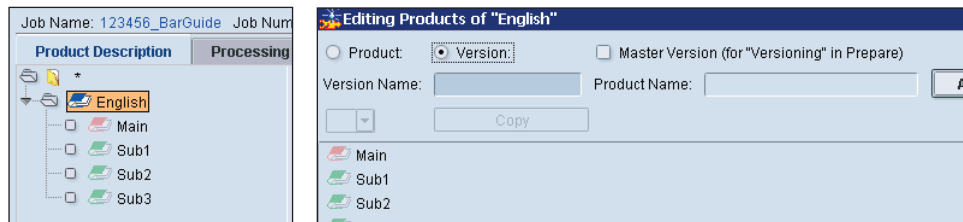


Changes in the Job View

The tab formerly called Elements has been split into two tabs – **Prepress** and **Press**.

Product Description

In the Product Description tab of a job, you can **create** the **versions** required for versioning jobs. You can specify the **master version** (red icon) or **multiple language versions** (green icon). Create **multiple subproducts** (blue icon), or create special **Product Intents**.

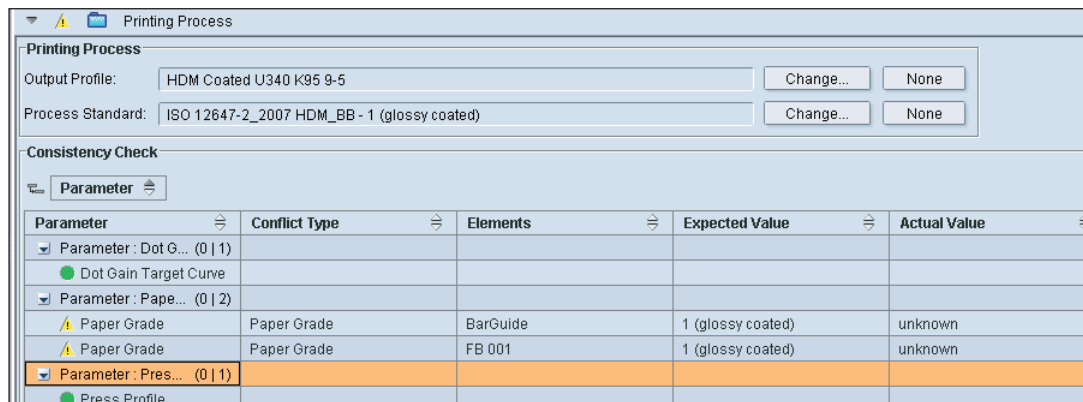


Job Settings

Under **Colors**, in the Target column there is a new option to **Output per Version**. This is used in conjunction with the new Versioning 2008 features.

Color	Name	Target	Source	C	M	Y	K	L*	a*	b*	
Black	Black	Output	Job	0	0	0	100				Normal
Cyan	Cyan	Output	Job	100	0	0	0				Normal
Magenta	Magenta	Output	Job	0	100	0	0				Normal
Yellow	Yellow	Output	Job	0	0	100	0				Normal
PANTONE 877 PC	PANTONE 877 PC	Output	Color ta...	0	0	0	40				Normal
PANTONE 199 PC	PANTONE 199 PC	Output	Color ta...	0	100	65	0				Normal
VarnishColor	VarnishColor	Output	Job	100	0	100	0				Transpa
PANTONE 877 C	PANTONE 877 C	Output per Version	Alias	0	0	0	40				Normal

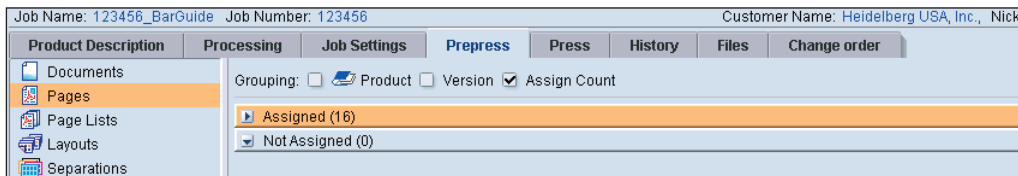
Under **Printing Process** on the Job Settings tab, you can specify an **Output Profile** and a **Process Standard**. The Prepress Manager will then do a Consistency Check to make sure that the Paper, Profiles, Calibration Curves, Plate Formats, etc. are consistent with each other. Custom Process Standards can be created in Color Toolbox and assigned here.



A **New Output Profile** called **HDM Offset 2007** is supplied. This profile belongs to the **new process standard** called **HDM_BB**. This is based on Fogra 39 (white backing), but also accounts for the black backing that Heidelberg color measuring devices require.

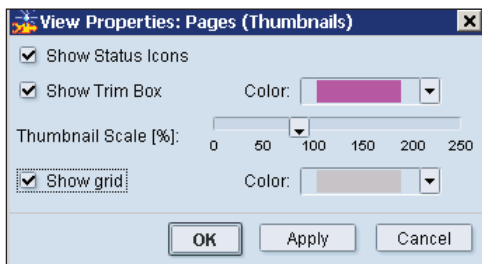
Prepress Tab (formerly Elements)

The Grouping Table functionality has been applied to the Pages view here also. You can group by Product, Version, or Assign Count. To retain the view of previous versions, activate the Assign Count option.



View Properties

This is accessed by right clicking on one of the page thumbnails, or can also be accessed when you select a layout. From here several new functions are available. These can be set differently for each user.



- Choose to **Show or Hide** the **Status Icons** beside the thumbnails.
- Choose to **Show or Hide** the **Trim Box** and **specify** the **color** that should be used to display the Trim Box (for pages only).
- Specify the **preferred Thumbnail Size** by using the slider bar. Choose from **0 to 250%**.
- Choose to **Show a Grid** and specify the color that should be used. The thumbnails will be shown in a grid format and a selection can be made by simply clicking inside the grid.

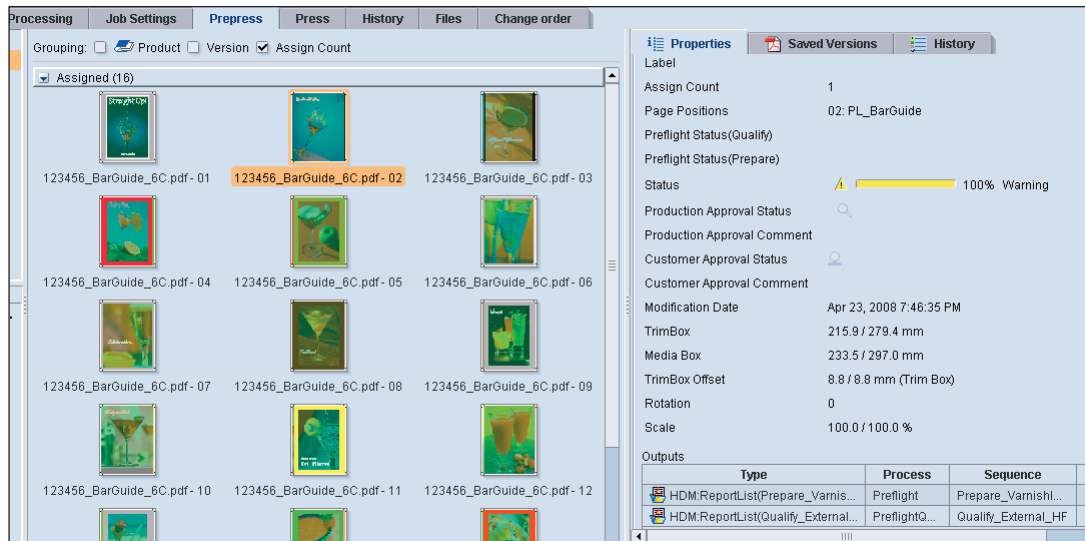


Page Geometry

In the contextual Change Page Geometry dialog box there is now an option to use a **user defined page offset**, rather than only using the Trim Box. If you change parameters here, you can see in the list view that the designation is shown in Bold face type and states By User. If the Trim Box is used in the Change Page Geometry dialog box, then the Rotation options will be grayed out. You must choose User Defined to be able to change the rotation of a page.

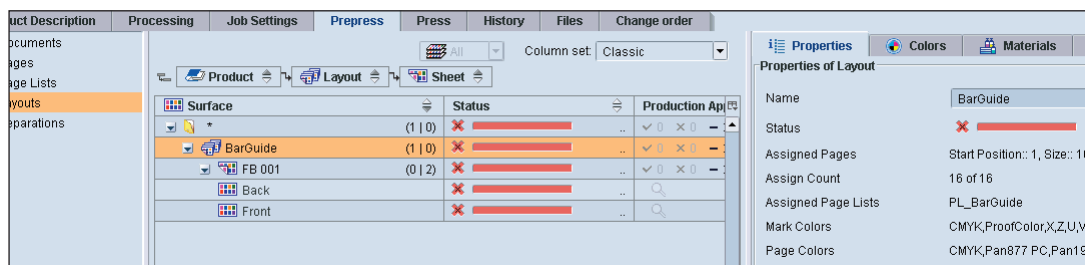
Page Properties

Getting Properties on a page will now show the results beside the Thumbnails. Different sub-menus of the properties are displayed on different tabs; i.e. **Properties**, **Saved Versions**, and **History**. History can be easily viewed on single elements in this way. This is also a convenient way to find and open the **Preflight Report** that is automatically generated on all files.



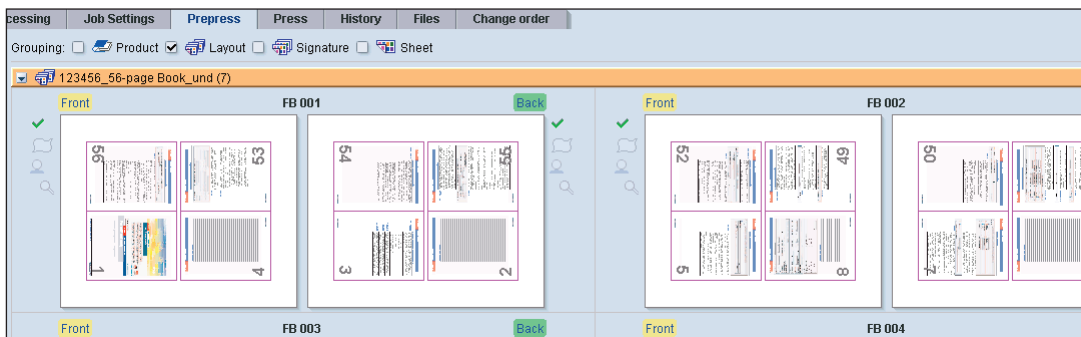
Layout List View

The **List View** for **Layouts** now only opens to the **Surface level**. Page positions and assignments are shown in the Properties window. Different categories are shown in tabular format within the Properties. You can view Properties, Colors, Materials and History.



Layout Thumbnail View

Depending on the settings in View Properties, the thumbnails for several sheets can be shown side by side across the window. Front and back of a sheet will never be separated. The Front and Back of a sheet now show a yellow and green designation as in Prinect Signa Station.



Sheets

The Sheets category is no longer shown in the Prepress tab. Sheets are now displayed in the Press tab for the Pressroom Manager.

Changes to the Sequence Templates

Qualify Sequence

External Hotfolder – If a directory has been defined in the Administration > System tab as previously discussed, the External hotfolder location can be activated in Qualify. Users can then drop files for processing into this external folder location.

Normalizing – The Normalizer library is updated to the version of Acrobat 8.1. The content of the Normalizing section has been re-organized in a tabular format for easier navigation.

Split Document – You can now specify a number of pages per file when splitting documents. As before, you should use this option with caution as it increases processing overhead.

Preflight – The Preflighter is completely revamped and is now a Heidelberg developed tool. Over 81 checks can be implemented. The Preflighter section is reorganized in tabular format for ease of navigation. Sections include **Actions**, **Document**, **Pages**, **Images**, **Fonts**, **Colors** and **Content**. Preflight report summaries are automatically generated on each file processed. You can generate custom Preflight Profiles in PDF Toolbox, then import and use them in Cockpit.



Prepare Sequence

Several new functions are available in the Prepare sequence. Like in the Qualify sections, most sections in Prepare are reorganized into a tabular format.

Varnish – If licensed, this options allows for on-the-fly creation of varnish plates. Capabilities are similar to those found in the PDF Toolbox Coating Editor plugin.

PDF Optimization – This aid to preparing files for repurposing allows you to clean up unwanted objects and comments in a file; as well as convert text to graphics. You can also resample and compress images.

Versioning – If licensed, this new processing step aids in splitting and checking files as a step in the preparation for creating versioned output.

Color Conversion – Includes advanced options for use of Device Link profiles and for applying overprints and knockouts.

CopySurface PDF Sequence

A new sequence used especially with Remote Access to copy high res pages to the Exchange area of the RA server.

Assemble PDF Sequence

Now also includes all of the options contained in the PDF Optimization section of Prepare.

Send Assembled PDF Sequence

You can now specify the latest acceptable response time, and then have the system send a reminder email message if no response has been received by the specified time.

Impose PDF Sequence

Proof Color can now be set to knockout. Marks can be output on proof at a lower dot area %.

Job Export Sequence

Now includes a new Subcontractor section. This is intended for jobs exported and sent to other vendors who use Prepress Manager. They can import the jobs with more complete information.



