



Prinect Signa Station v4.0

New Features



Print Media Academy

IMPORTANT NOTICE:

The information in this document is confidential and proprietary to Heidelberger Druckmaschinen AG and may be legally privileged.

Any review, printing, copying, use or distribution of this document is prohibited without the written allowance of Heidelberger Druckmaschinen AG and may be a criminal offense. If you have received this document in error, please notify Heidelberger Druckmaschinen AG immediately.



Table of Contents

Prinect Signa Station v4.0

Installation Changes	1
Signa Server	1
Option Chooser / Licensing.....	1
New Preferences	2
Global Preferences	2
Automatic File Names	2
Show MDS Resources as Table	3
Signa Joined to MDS	3
MDS Resources Shown as Table	3
Show Spot Colors as True Colors.....	4
Overprint Preview	4
File Menu Changes	4
Import Signa Resources	4
Export Signa Resources	4
Open with Browser.....	4
Print Assistant	5
Improved Marks Handling	5
New Dipco 3.1 Marks.....	6
Ink Pick Up Bars	6
New Marks	7
Marks Folder Report	7
New Versioning Features	8



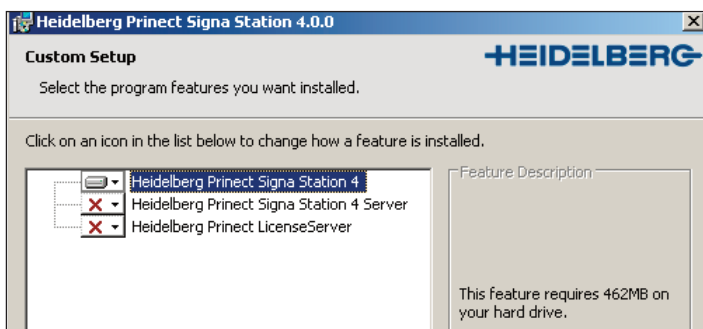


Prinect Signa Station v4.0

Installation Changes

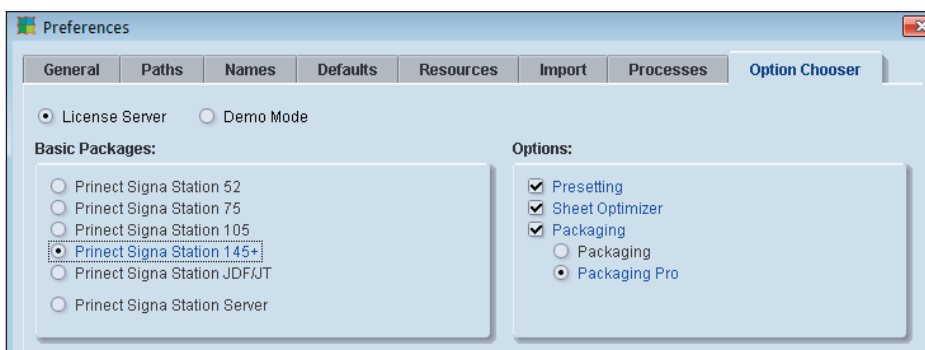
Signa Server

The Prinect Signa Station installer now includes a new choice called **Heidelberg Prinect Signa Station 4 Server**. This option allows Signa Station to run as a service on the Prepress Manager server and automatically complete a layout using stripping parameters provided in the JDF file from an MIS system. It is an **optional license option**. If licensed, it must be always be installed on the Prepress Manager server; there is no reason to install it anywhere else. In workflows that are not connected to an MIS system, there is no need to install this option at all.



Option Chooser / Licensing

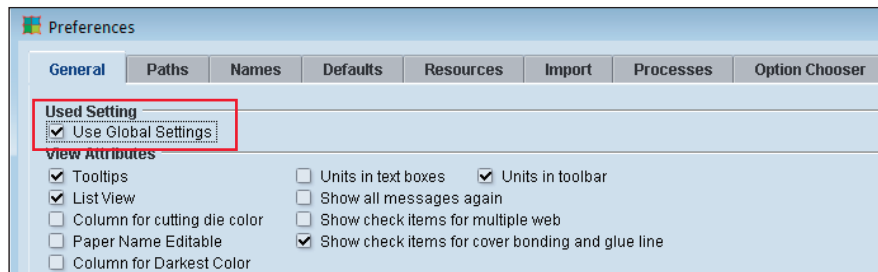
In the Option Choose window when Signa first launches you will see some new licensing options to choose from. The size variants have been adjusted to coincide with the Press format changes: Prinect Signa Station 75 for the new XL75 press, Prinect Signa Station 105 replaces the previous 102, and Prinect Signa Station 145+ for the new VLF presses. Also the Prinect Signa Station Server is added for the service or engine on the Prepress Manager server. The new Packaging Pro option is an extension of the existing packaging functionality. It allows for reading, correcting, converting, and editing of CAD files, plus 3-D animation for folding boxes.



New Preferences

Several new options are available in the Preferences menus to make Signa operation more streamlined.

- **Global Preferences** – by using this setting all of the Signa Station workstations can use the one common set of preferences. No more will preferences have to be set and maintained on each individual workstation. The preferences file is transferred to the same location as the Workspace folders when this option is selected.



Preferences

General Paths Names Defaults Resources Import Processes Option Chooser

Used Setting

☒ Use Global Settings

View Attributes

☒ Tooltips ☐ Units in text boxes ☒ Units in toolbar

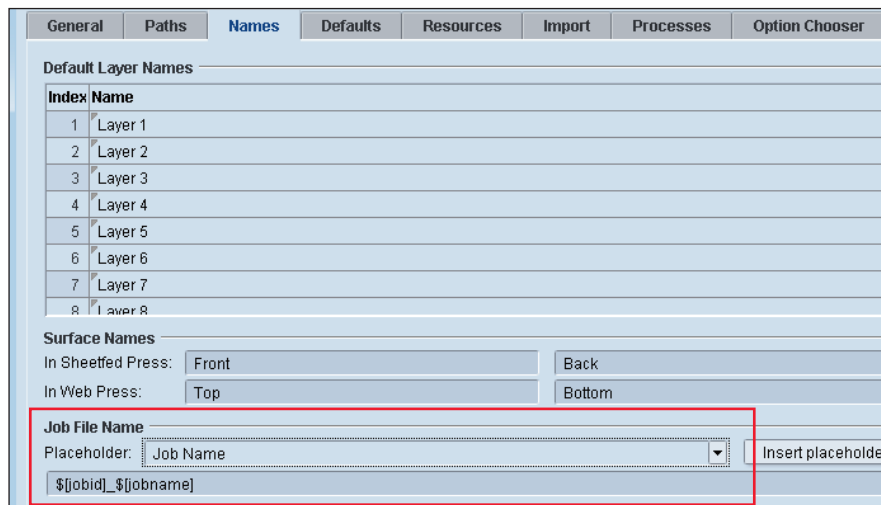
☒ List View ☐ Show all messages again

☐ Column for cutting die color ☐ Show check items for multiple web

☐ Paper Name Editable ☒ Show check items for cover bonding and glue line

☐ Column for Darkest Color

- **Automatic File Names** – By using variable placeholders, a customer can decide how they want their filenames to appear. When using Save or Save As, the appropriate filename will then be suggested using the defined placeholder structure; i.e. Job Name, Customer Name, Output Date etc.



General Paths Names Defaults Resources Import Processes Option Chooser

Default Layer Names

Index	Name
1	Layer 1
2	Layer 2
3	Layer 3
4	Layer 4
5	Layer 5
6	Layer 6
7	Layer 7
8	Layer 8

Surface Names

In Sheetfed Press: Front Back

In Web Press: Top Bottom

Job File Name

Placeholder: Job Name Insert placeholder

Placeholder structure: \$[jobid]_\${jobname}



- **Show MDS Resources as Table** – In the Import tab in preferences you can connect Prinect Signa Station to the MDS, or Master Data Store. New with this version, you can also choose to have the MDS resource information displayed in table format in Signa's Resources tab. It is also possible to edit the MDS paper resources in version 4.

MDS (Master Data Store)

☒ Use MDS

Server:

☒ Show MDS Resources as Table

Signa Station Joined to the MDS

When Signa Station is joined to the MDS, you will see an extra tab named MDS in addition to Resources and Machines. This MDS tab will display all of the resources being provided by the MDS, such as Customers, Platesetters, Presses and Papers.

The screenshot shows the MDS (Master Data System) interface. At the top, there are two tabs: 'Resources' and 'Machines'. The 'Resources' tab is currently selected, and it displays a tree view of the system's resources. The tree view includes the following folders:

- Papers (Printing Materials)
- Customer Data
- User Data
- Filmsetters
- Platesetters
- Sheetfed Presses
- Web Presses

The 'Machines' tab is also visible but not selected. The interface has a light blue background with a white border around the content area.

MDS Resources Shown as Table

When the Show MDS Resources as Table is checked, the data will also be displayed in tabular format as shown below. Certain data, such as papers, can be edited as necessary or new papers can be created.

Resources

Machines

MDS

Papers (Printing Materials)

Customer Data

User Data

Filmsetters

Platesetters

Sheetfed Presses

Web Presses

Group	Brand	Item Number	Description
(without a group)	80# Newpage Signature glos...	100020	80# New
(without a group)	Art Print 32# Bond	1113	Art Print 3
(without a group)	Art Print 32# Bond SM52	1120	Art Print 3
(without a group)	Fortune Matte 70# 12.5x19	X-0001	Fortune M
(without a group)	Art Print 32# Bond	1115	Art Print 3
(without a group)	Princt Special Core	596820065922	Princt Sp
(without a group)	Ambassador Gloss Art	Paper	Ambassa
(without a group)	80# Endeavour Gloss Text	0207-5318	80# Ende

- **Show Spot Colors as True Colors** – On the Processes tab in preferences, you can choose to display spot colors as true colors. This requires that Signa be connected to an MDS, and that the color to be displayed exists in the color tables. If both these conditions are met, the color will be displayed using the appropriate recipe.

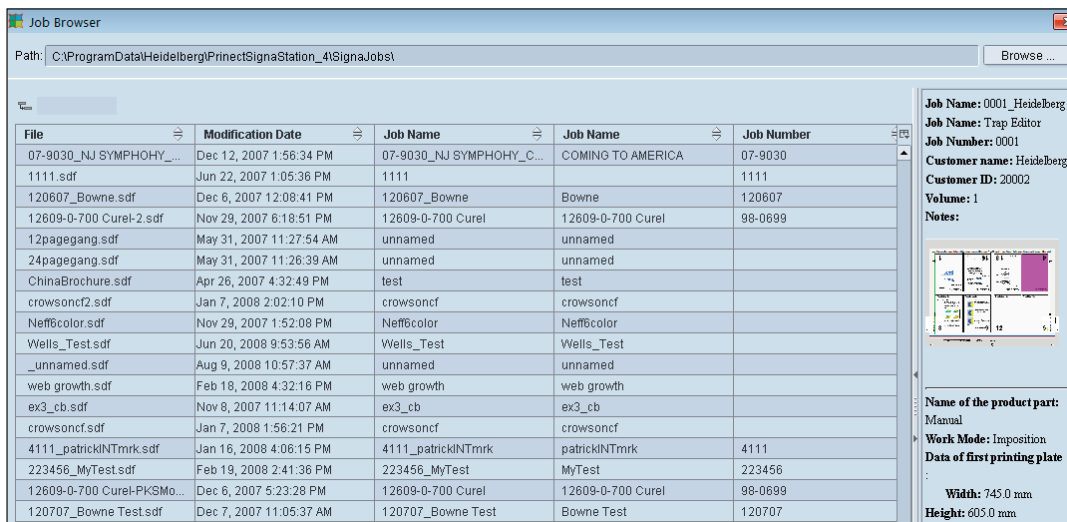


- **Overprint Preview** – You can also enable Overprint Preview here. This should provide a more accurate display of objects in a file that are set to overprint, as well as the traps that have been calculated.

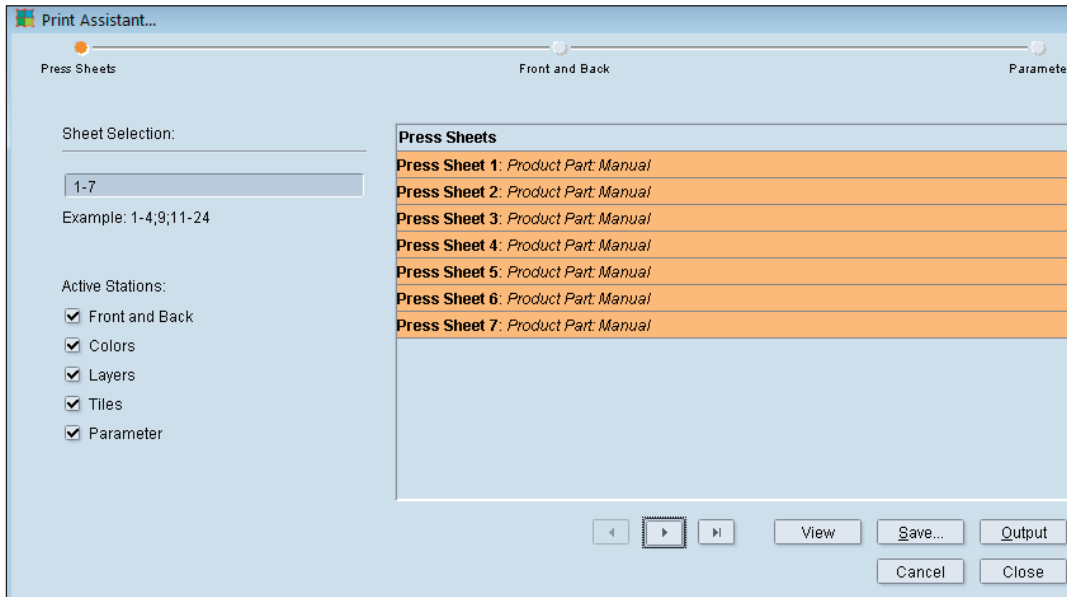
File Menu Changes

Under the File Menu are some new options worth noting.

- **Import Signa Resources** – from another workstation for example, or from previously exported resources.
- **Export Signa Resources** – to save a copy as a backup, or export for the purpose of importing into another workstation.
- **Open with Browser** – provides a “browser” list of the contents of the Signa Jobs folder. Select the job to be opened, see a Preview of any job in the list, and/or delete jobs from the list. Select the column heads that you wish to have displayed.

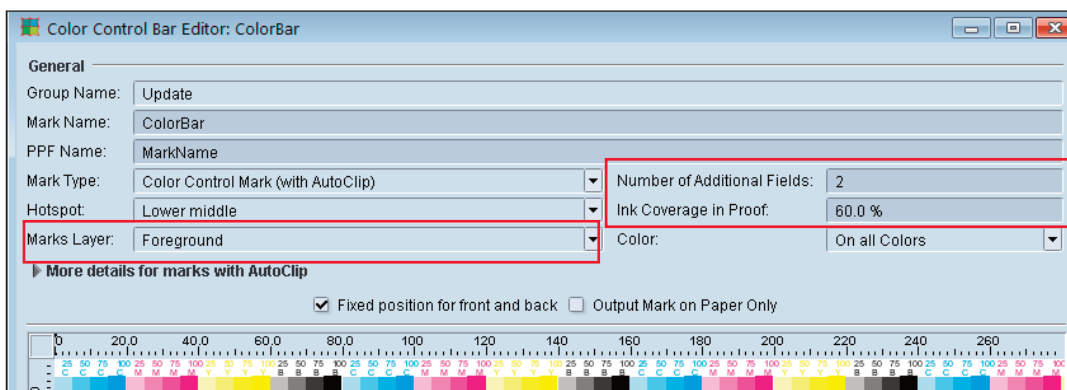


– **Print Assistant** – a new wizard to help define and assign output parameters to the sheets in a job. Choose different output parameters for different sheets, or choose to edit the output parameter set assigned to a sheet. Specify colors and/or surfaces to be output. This Assistant can be particularly helpful in jobs with multiple layers and versions. Does not apply to a JDF workflow!



Improved Marks Handling

In the creation of **Color Control Marks**, there is a new option to **add additional fields** to the mark so that it extends beyond the clip to sujet area. There is also an option to specify the **Ink Coverage in Proof** for the mark. This will be used for proof output so that less ink will be used. A new pull-down choice allows for easy assignment of the mark to the foreground or background.



These same additions are also available in the **new Create Combi Mark** dialog window.



New Dipco 3.1 Marks

Shipping along with Prinect Signa Station is a CD with new **Dipco 3.1 marks**. These marks include several new control elements.

- **Color control bar “7S”** for 7-color printing
- **Mini Spots** for **5-color**, **6-color**, and **7-color** printing
- **Modified “6S”** configured for **spot color** printing:
- **6S-XZ** (X, Z, , V, S1, S2)
- **6S-BX** (B, X, Z, U, V, S1)
- **6S-XC** (X, C, M, Y, U)
- **Micro bar** for Prinect **Impress Control**

Certain marks from the Dipco 2.1 version have been discontinued, but are still included on the CD. For error-free use with products like Image Control and Axis Control it is very important that you use the new versions of the mark and the correct mark. For information about the correct usage of the color control bars see the document entitled **Working with Color Bars**.

Ink Pick Up Bars

In Ink Pick Up Bars, like mentioned previously you can specify **additional fields** beyond the sujet, and the **Ink Coverage in Proof** value. In addition, for Ink Pick Up Bars, in the **Cycle** text box set the number of repeated colors (how many sets you want). If you desire the ink pick up bar to be vertical instead of horizontal, check the **Vertical Color Strips** check box.

Mark Name: InkPickup CMYK

PPF Name: InkPickup CMYK

Mark Type: Color Control Mark (with AutoClip) Number of Additional Fields: 2

Hotspot: Lower middle Ink Coverage in Proof: 100.0 %

Marks Layer: Foreground Color: On all Colors

☒ Fixed position for front and back ☐ Output Mark on Paper Only

Preview: A horizontal bar with 10 segments of different colors (Cyan, Magenta, Yellow, Black, etc.)

Width: 40.5512

Height: 0.1969

Cycle: 2

Ink Coverage: 100

☐ Vertical Color Strips

Choose Color Layer

- Cyan
- Magenta
- Yellow
- Black
- Spot 1 (X)



New Marks

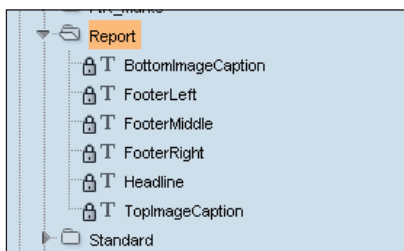
Several new predefined marks have been added to the default resources. They include:

- **Page Cut Index** in the Standard Group – Primarily for package printing, this mark can be used to identify faulty cuts and cut off parts.
Example: \${StationNumber}:\${PageCutIndex}
- **PlateID** in the PtR_Marks Group – Useful only in a JDF workflow, this mark identifies the plate. It includes the plate ID and the color name.
Example: Plate ID: 12345 - Cyan
- **PtR_PlateSet_ColorMark** in the PtR_Marks Group – This marks can be used to identify all of the separations belonging to a set of plates. The mark includes the current Plate color plus the Plate Set listing the rest of the colors needed to complete the set.
Example: Plate: Cyan
Plate Set: Cyan - Magenta - Yellow - Black - Spot color
- **PtR_PlateSet_PlateID_Mark** in the PtR_Marks Group – This mark includes the Plate ID, the current Plate color plus the Plate Set listing the rest of the colors needed to complete the set.
Example: Plate ID: 12345 - Cyan
Plate Set: Cyan - Magenta - Yellow - Black - Spot color

Additional Marks have been added for Gang Run jobs including the **PtR_GangJob_Sheet_Mark**, the **PtR_GangPart_FoldingSheet_Mark**, and the **PtR_GangJobMark**. These marks identify the sheet, folding sheet, or page source job in a gang job. Note that the GangJob Mark only makes sense in a JDF workflow since this is where multiple pages may be combined within one Prepress Manager job.

Marks Folder Report

The new folder named Report under the Marks resources contains **report marks** that can be used when creating an **HTML or PDF report**. Text marks for headers, footers, headlines and captions are included.



New Versioning Features

Many enhancements have been made in the Prinect family of products, as well as in Prinect Signa Station, to better handle versioning jobs. The **Layer and Version editors** allow a user to customize layer names, and easily combine layers and versions as necessary.

Special **Versioning Marks** have been included to allow for easy identification of press sheets, sheet surfaces, press sheet variants and language versions.

The new **Print Assistant** provides maximum flexibility in outputting various sheets, surfaces, colors, and layers. A wizard guides you through the selection process. For additional details about versioning and how it is handled in Prinect products, watch for the document titled *Working with Versioning in Prinect 2008* to be available in the near future.

