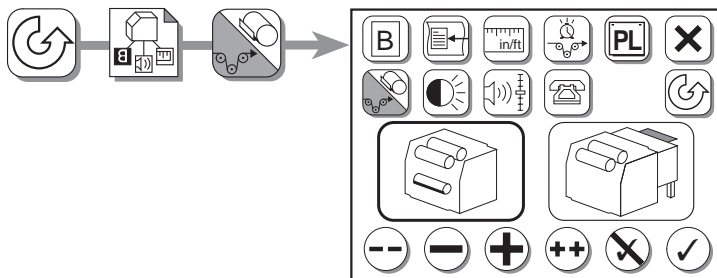


## Changing the Output Mode

❖ *Note: If you use a take-up cassette in on-line processing mode, the imagesetter reports error 10 (cassette size mismatch) and the media cannot advance.*

1. Press Pause, Configuration, Output Mode.



2. Press to select the output mode:



Options:

- Take-up cassette (left)
- OLP (right)

### 3. Confirm your selection:



Press to change the output mode.



(Press to cancel.)

The button indicates the current output mode:



Take-up cassette



OLP