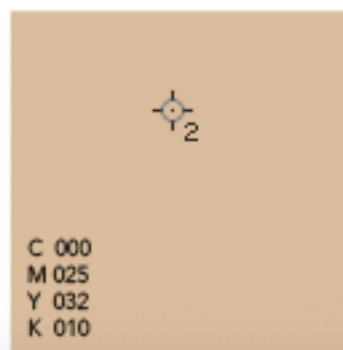




Skintone 1



DeltaE

L*	<input type="text" value="73"/>	<input type="text" value="75"/>	ΔL^*	<input type="text" value="2"/>
a*	<input type="text" value="17"/>	<input type="text" value="14"/>	Δa^*	<input type="text" value="-3"/>
b*	<input type="text" value="13"/>	<input type="text" value="16"/>	Δb^*	<input type="text" value="3"/>
C*	<input type="text" value="21.4"/>	<input type="text" value="21.26"/>	ΔC^*	<input type="text" value="-0.14"/>
h	<input type="text" value="37.41°"/>	<input type="text" value="48.81°"/>	Δh	<input type="text" value="11.41°"/>
			ΔH^*	<input type="text" value="4.24"/>

CIE 1976

ΔE^*

CIE 1994

graphic arts
textiles

CIE 2000

CMC 2:1

acceptability
perceptability

0 1 2 . . .

Decimal places

☐

Hide tooltips

☐

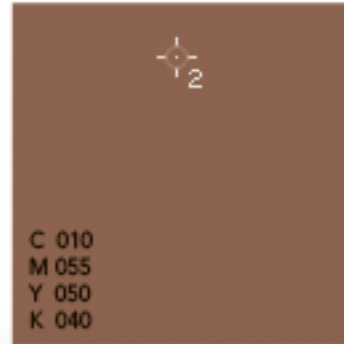
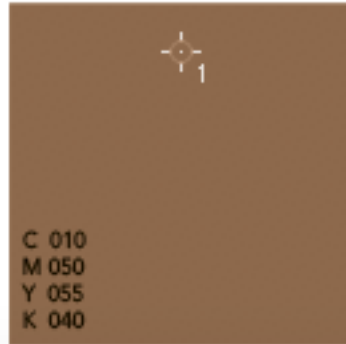
Check updates

en it

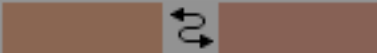
Change language

©2008 Mauro Boscariol

Skintone 2



DeltaE

L*	47	46	ΔL^*	-1
a*	19	21	Δa^*	2
b*	18	15	Δb^*	-3
C*	26.17	25.81	ΔC^*	-0.37
h	43.45°	35.54°	Δh	-7.91°
			ΔH^*	3.59

	CIE 1976	CIE 1994	CIE 2000	CMC 2:1
ΔE^*	3.74	2.77	3.02	4.35
		graphic arts textiles		acceptability perceptability

0 1 2 . . .
Decimal places

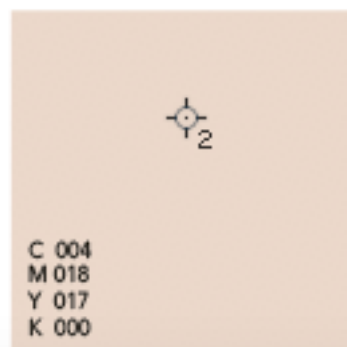
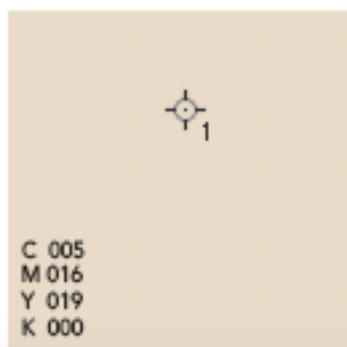
☐ Hide tooltips

☐ Check updates

en it
Change language

©2008 Mauro Boscariol

Skintone 3



DeltaE

L*	84	84	ΔL^*	0
a*	8	10	Δa^*	2
b*	5	4	Δb^*	-1
C*	9.43	10.77	ΔC^*	1.34
h	32.01°	21.8°	Δh	-10.2°
		ΔH^*	1.79	
ΔE^*	CIE 1976	CIE 1994	CIE 2000	CMC 2:1
	2.24	1.83	2.19	2.93
		graphic arts textiles		acceptability perceptability
0 1 2 . . .	Hide tooltips	Check updates	en it Change language	
©2008 Mauro Boscarol				

Grey 2

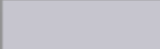
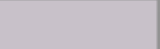


C 018
M 015
Y 015
K 000



C 016
M 018
Y 015
K 000

DeltaE

L*	80	79	ΔL^*	-1
a*	2	5	Δa^*	3
b*	-4	-3	Δb^*	1
C*	4.47	5.83	ΔC^*	1.36
h	296.57°	329.04°	Δh	32.47°
			ΔH^*	2.86

	CIE 1976	CIE 1994	CIE 2000	CMC 2:1
ΔE^*	3.32	3.07	3.97	4.06
		graphic arts textiles		acceptability perceptability

0 1 2 . . .

Decimal places



Hide tooltips



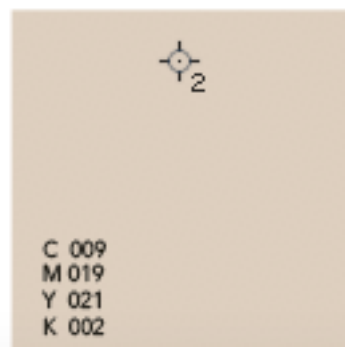
Check updates

en it

Change language

©2008 Mauro Boscariol

Skintone 4



DeltaE

L*	79	80	ΔL^*	1
a*	10	7	Δa^*	-3
b*	4	5	Δb^*	1
C*	10.77	8.6	ΔC^*	-2.17
h	21.8°	35.54°	Δh	13.74°
		ΔH^*	2.3	

	CIE 1976	CIE 1994	CIE 2000	CMC 2:1
ΔE^*	3.32	2.66	3.24	3.55
		graphic arts textiles		acceptability perceptability

0 1 2 . . .
Decimal places

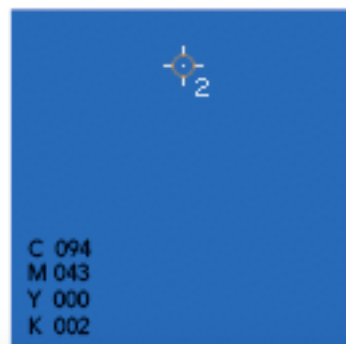
☐ Hide tooltips

☐ Check updates




en it
Change language

©2008 Mauro Boscarol

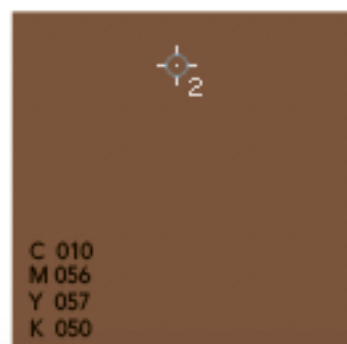
Blue hue



DeltaE



L*	43	43	ΔL^*	0
a*	-6	-11	Δa^*	-5
b*	-47	-48	Δb^*	-1
C*	47.38	49.24	ΔC^*	1.86
h	262.72°	257.09°	Δh	-5.63°
			ΔH^*	4.75
ΔE^*	CIE 1976	CIE 1994	CIE 2000	CMC 2:1
	5.1	2.84	3.11	3.12
		graphic arts textiles	acceptability perceptability	
0 1 2 . . .	 Hide tooltips	 Check updates	en it Change language	
©2008 Mauro Boscariol				

Skintone 5



Ora

DeltaE

L*	39	40	ΔL^*	1
a*	22	20	Δa^*	-2
b*	15	17	Δb^*	2
C*	26.63	26.25	ΔC^*	-0.38
h	34.29°	40.36°	Δh	6.08°
			ΔH^*	2.8

	CIE 1976	CIE 1994	CIE 2000	CMC 2:1
ΔE^*	3	2.25	2.39	2.99
		graphic arts textiles		acceptability perceptability

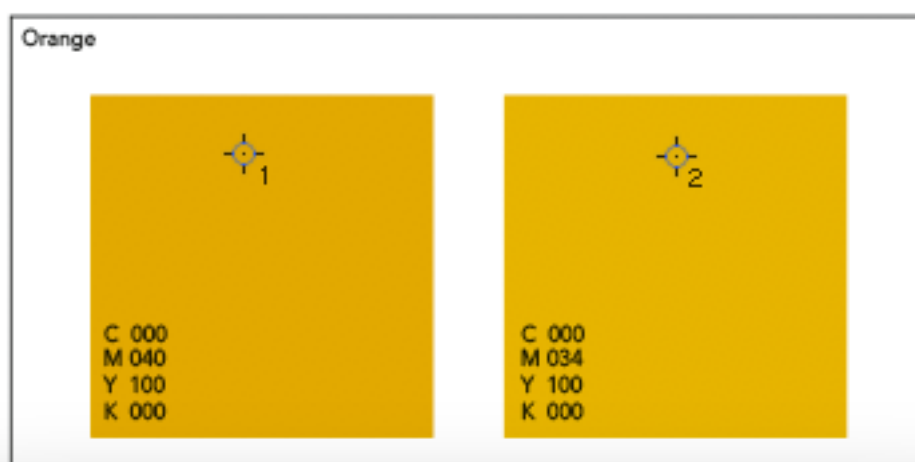
0 1 2 . . .
Decimal places

☐ Hide tooltips




☐ Check updates

en it
Change language

©2008 Mauro Boscarol



DeltaE

L*	71	73	ΔL^*	2
a*	25	20	Δa^*	-5
b*	72	75	Δb^*	3
C*	76.22	77.62	ΔC^*	1.4
h	70.85°	75.07°	Δh	4.22°
			ΔH^*	5.66
ΔE^*	CIE 1976	CIE 1994	CIE 2000	CMC 2:1
	6.16	3.33	3.72	4.03
		graphic arts textiles	acceptability perceptability	
0 1 2 . . .	 Hide tooltips	 Check updates	en it Change language	
©2008 Mauro Boscariol				