

## 8. ORDERING SPAREPARTS

### GENERAL

#### PARTS DELIVERED

In APPENDIX A is a list of the parts delivered with the processor as well as a list of the Installation Kit and the Spareparts Kit.

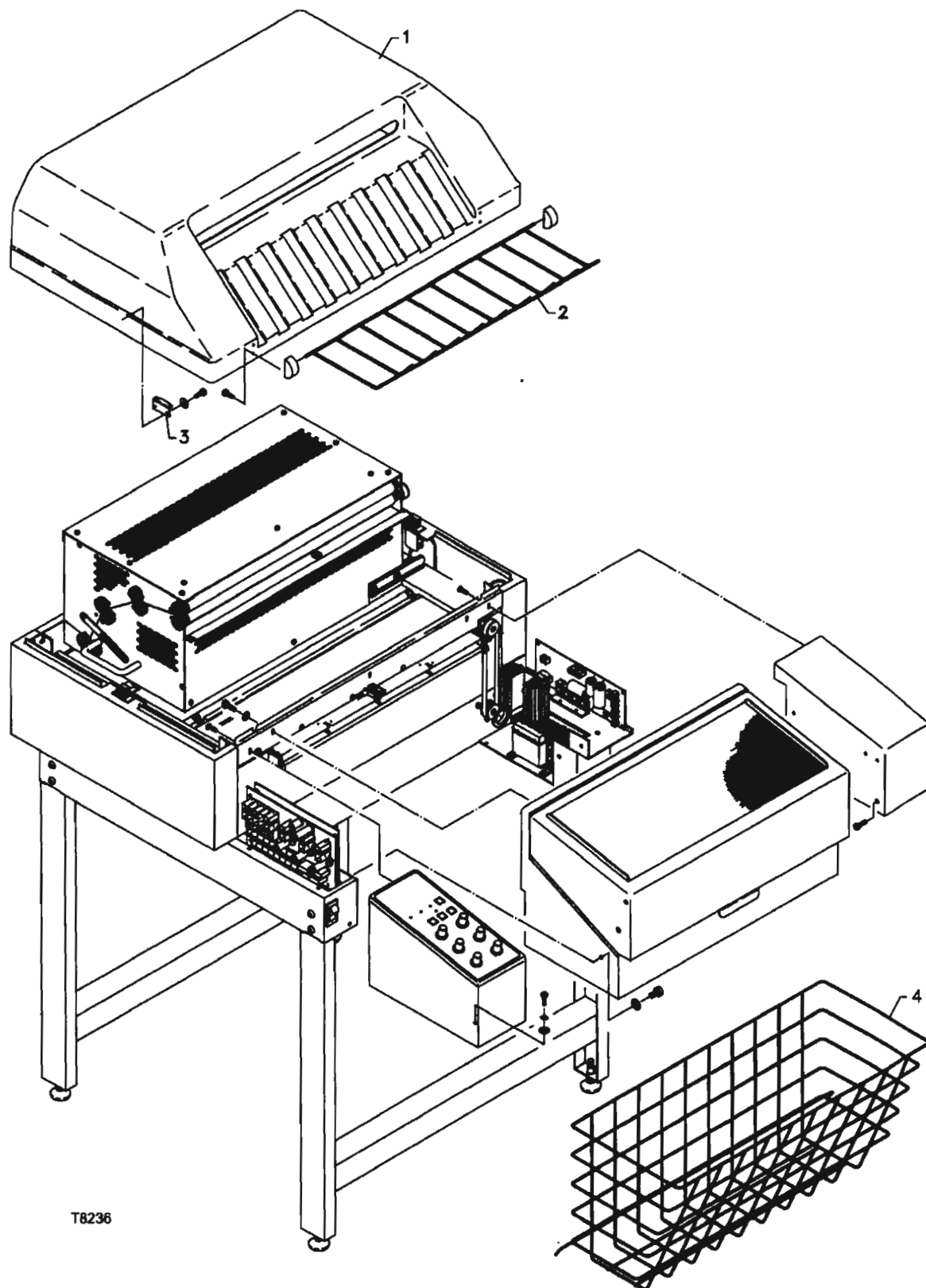
#### IMPORTANT WHEN ORDERING SPAREPARTS

When ordering spareparts please state carefully the sparepart number, the specification and the number of items wanted.

If, though, a certain sparepart is not specified in this chapter, see APPENDIX A "ADDITIONAL SPAREPARTS".

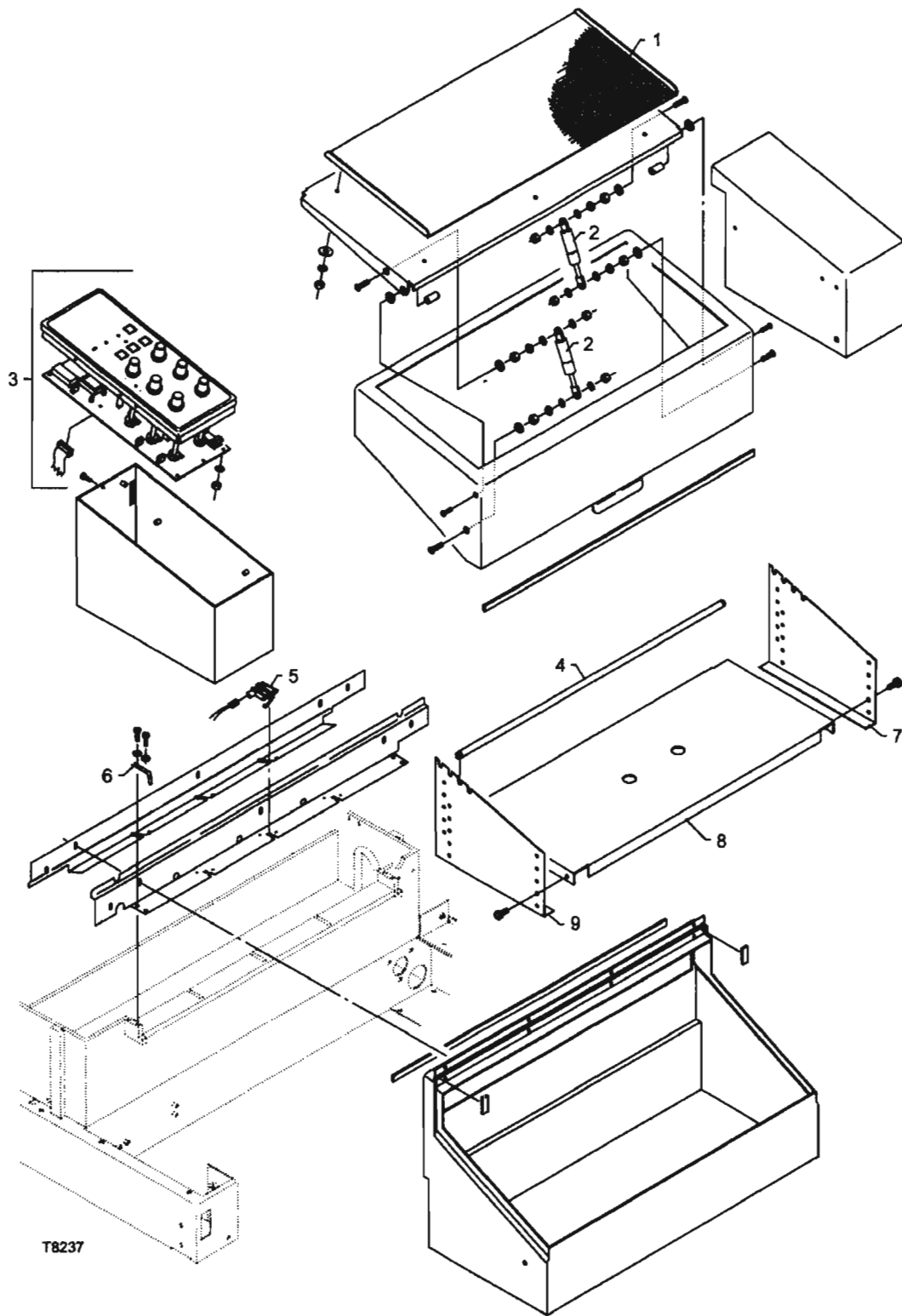
### ISO-METRINC DRAWINGS AND SPAREPARTS

ON THE FOLLOWING PAGES ARE THE  
ISO-METRIC DRAWINGS WITH  
SPAREPARTS AND PART NUMBERS.



# COMPLETE MACHINE

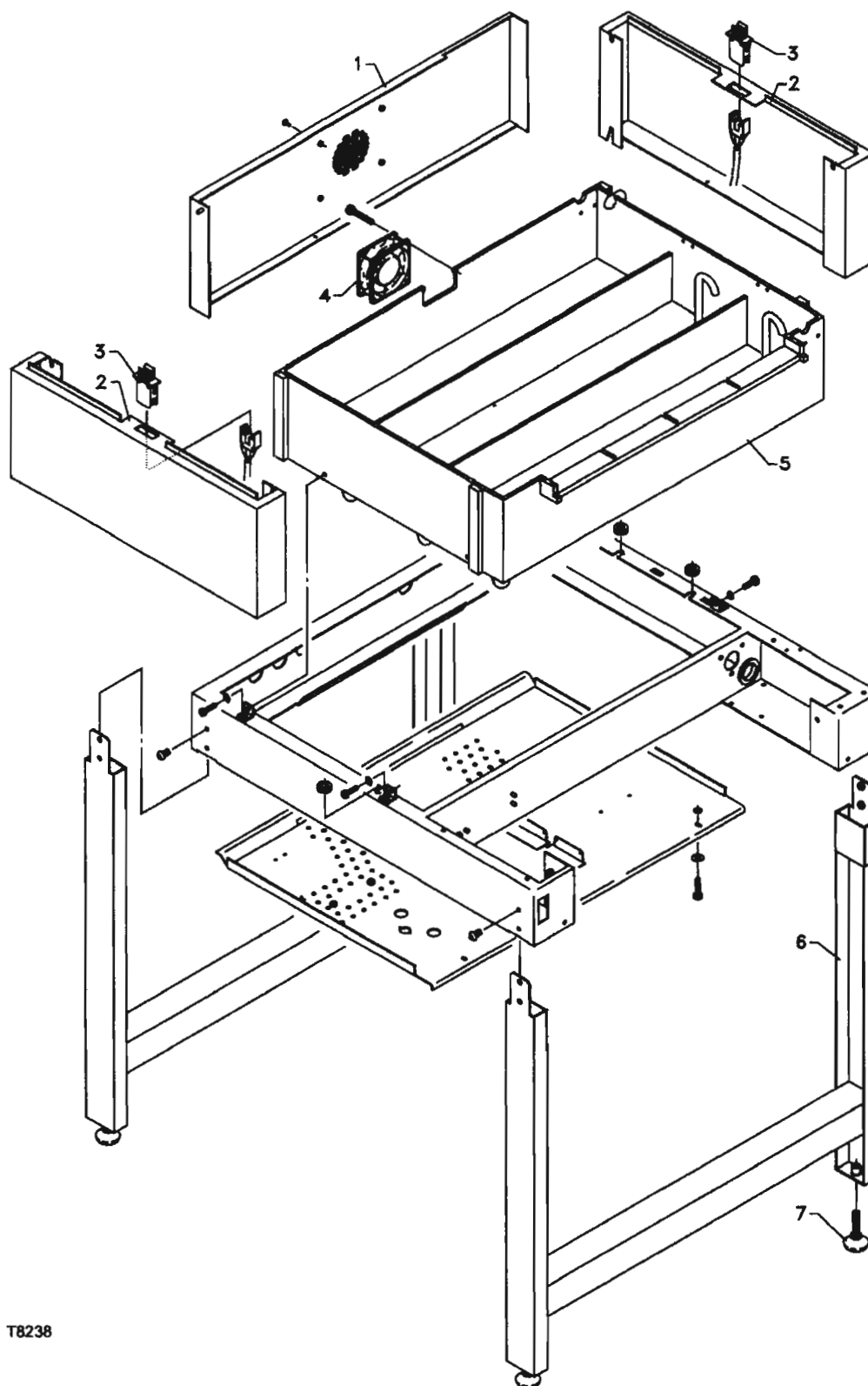
Pos. No	510/20	720/28	Specification
1	4501D290800	4572D290800	COVER, TOP
2	4501D291315	4572D291315	BASKET, FILM
3	44770	44770	BRACKET, SAFETY SWITCH
4	4501D310315	4572D310315	BASKET, FILM
	(Not illustrated)		LOGOS - SEE APPENDIX A
5			
6			
7			
8			
9			
10			
11			
12			
13			
14			
15			
16			
17			
18			
19			
20			
21			
22			
23			
24			
25			
26			
27			
28			
29			



ENTRANCE AND CONTROL PANEL

## FEED TABLE AND DAYLIGHT CASSETTE

Pos. No	510/20	720/28	Specification
1	4721D300134	4611D300134	TABLE, FEED
2	6221X000101	6221X000101	SPRING, GAS, LID
3	47435	47435	PANEL, CONTROL
4	3122Z100001	3122Z100004	BAR, DISTANCE
5	16286	16286	SWITCH, SENSOR
6	2131Z000401	2131Z000401	SPRING
7	40704	40704	SIDE, CASSETTE, RIGHT
8	40702	40702	BOTTOM, CASSETTE
9	40703	40703	SIDE, CASSETTE, LEFT
10			
11			
12			
13			
14			
15			
16			
17			
18			
19			
20			
21			
22			
23			
24			
25			
26			
27			
28			
29			
30			



T8238

STAND

**STAND**

Pos. No	510/20	720/28	Specification
---------	--------	--------	---------------

1	4501D290722	4572D290722	PLATE, REAR
2	40698	40698	PANEL, SIDE
3	16864	16864	SWITCH, SAFETY
4	2304Y000101	2304Y000101	FAN, EXHAUST
5	31024	31083	TANK
6	40820	40826	STAND, FRAME
7	70194	70194	LEG, ADJUSTABLE

8

9

10

11

12

13

14

15

16

17

18

19

20

21

22

23

24

25

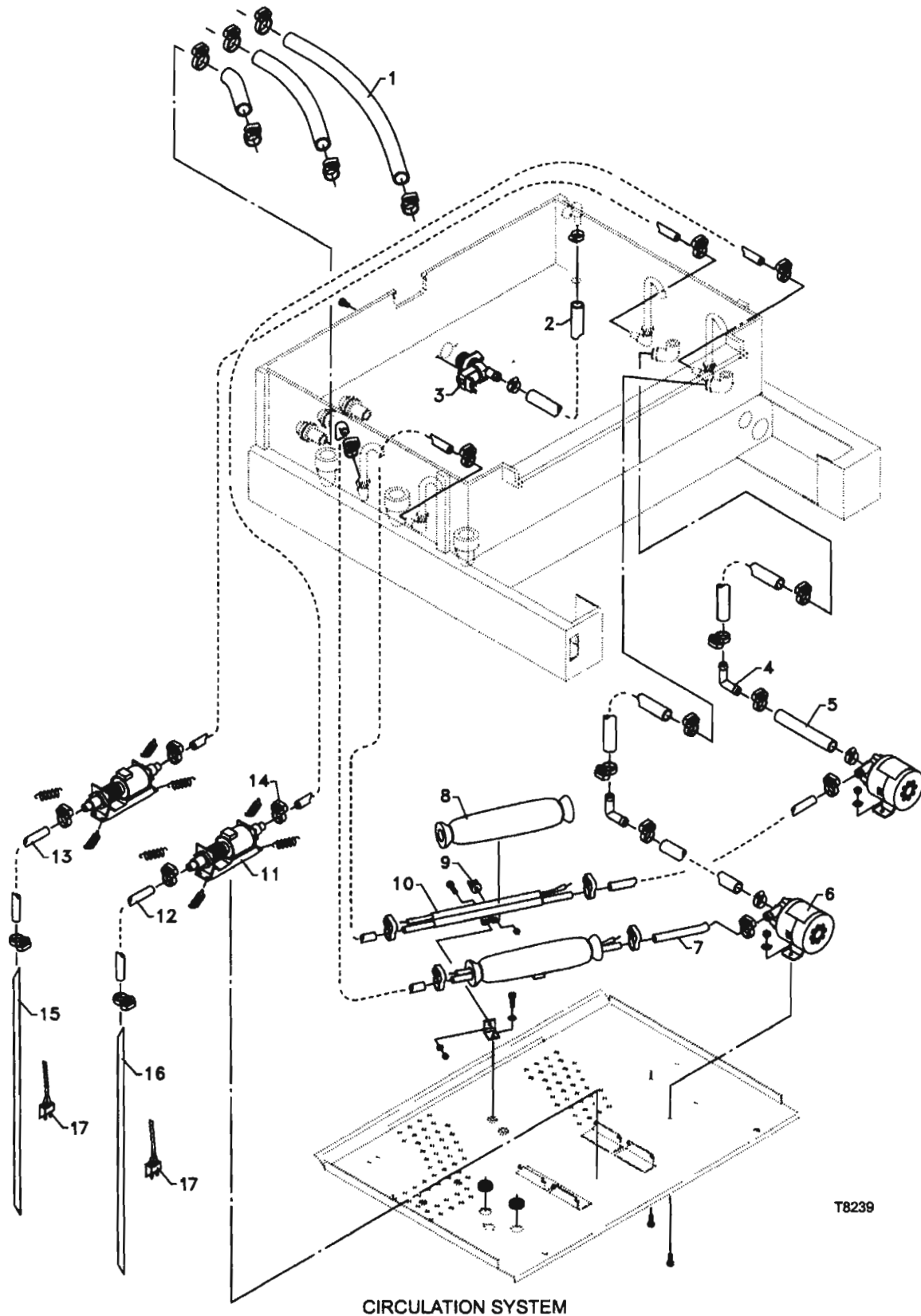
26

27

28

29

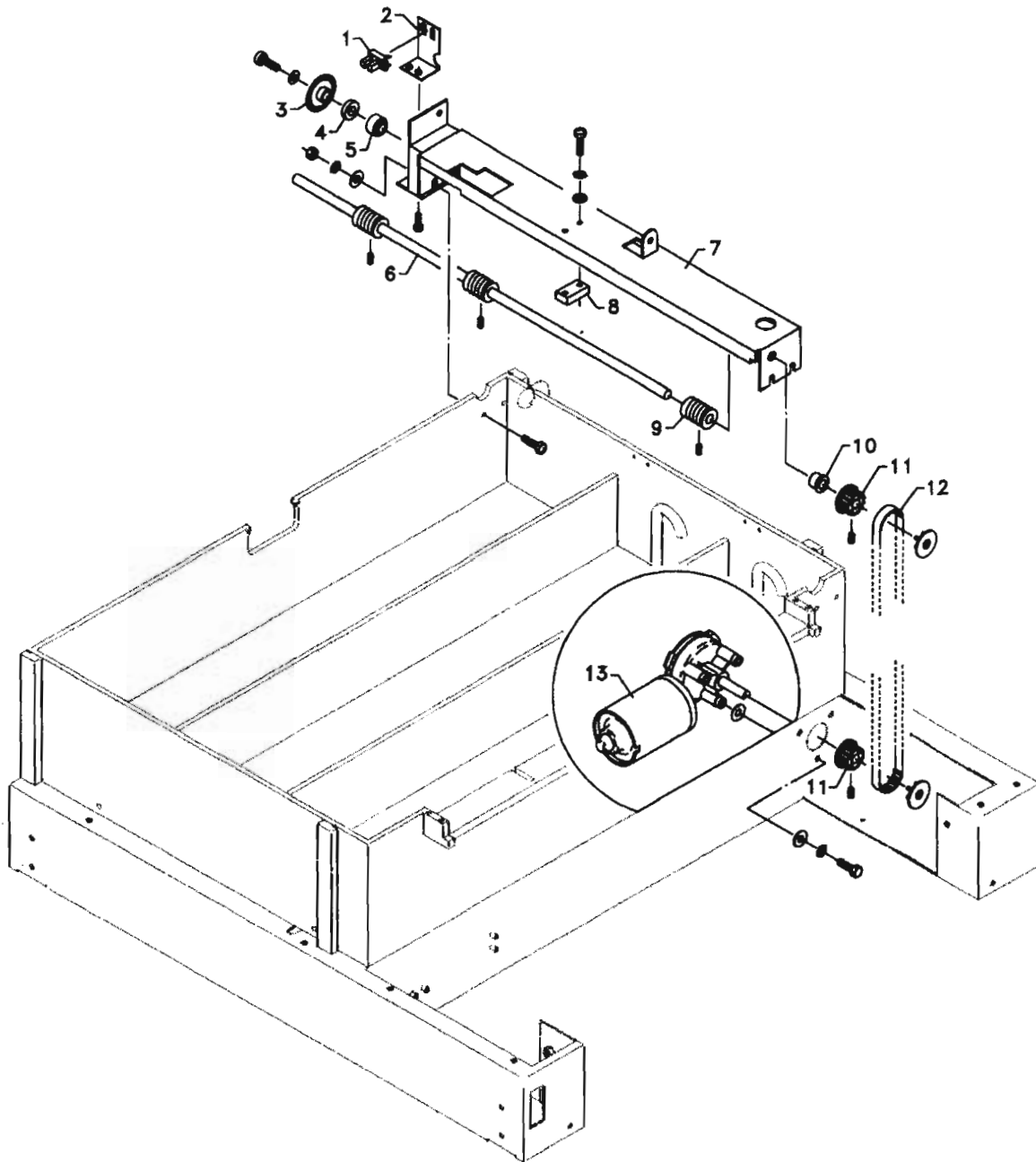
30





## CIRCULATION SYSTEM

Pos. No	510/20	720/28	Specification
1	7104X193000	7104X193000	HOSE, PVC
2	7104X132500	7104X132500	HOSE, PVC
3	0501X000101	0501X000101	VALVE, SOLENOID
4	7353X131321	7353X131321	ELBOW 90°
5	7106X133300	7106X133300	HOSE, PVC
6	0201X000901	0201X000901	PUMP, CIRCULATION
7	7111X102000	7111X102000	HOSE, SILICONE
8	8121X000101	8121X000101	FOAM, RUBBER, ISOLATION
9	2435X000100	2435X000100	SWITCH, THERMO
10	26345	26345	HEATER
11	70003	70003	PUMP, REPLENISH
12	7101X102000	7101X102000	HOSE, RED, DEVELOPER
13	7102X102000	7102X102000	HOSE, BLUE, FIXER
14	7192X151700	7192X151700	CLAMP, HOSE
15	3230Z000202	3230Z000202	PIPE, REPLENISH, FIXER
16	3230Z000201	3230Z000201	PIPE, REPLENISH, DEVELOPER
17	2121Y000101	2121Y000101	SENSOR, REPLENISH
18			
19			
20			
21			
22			
23			
24			
25			
26			
27			
28			
29			
30			

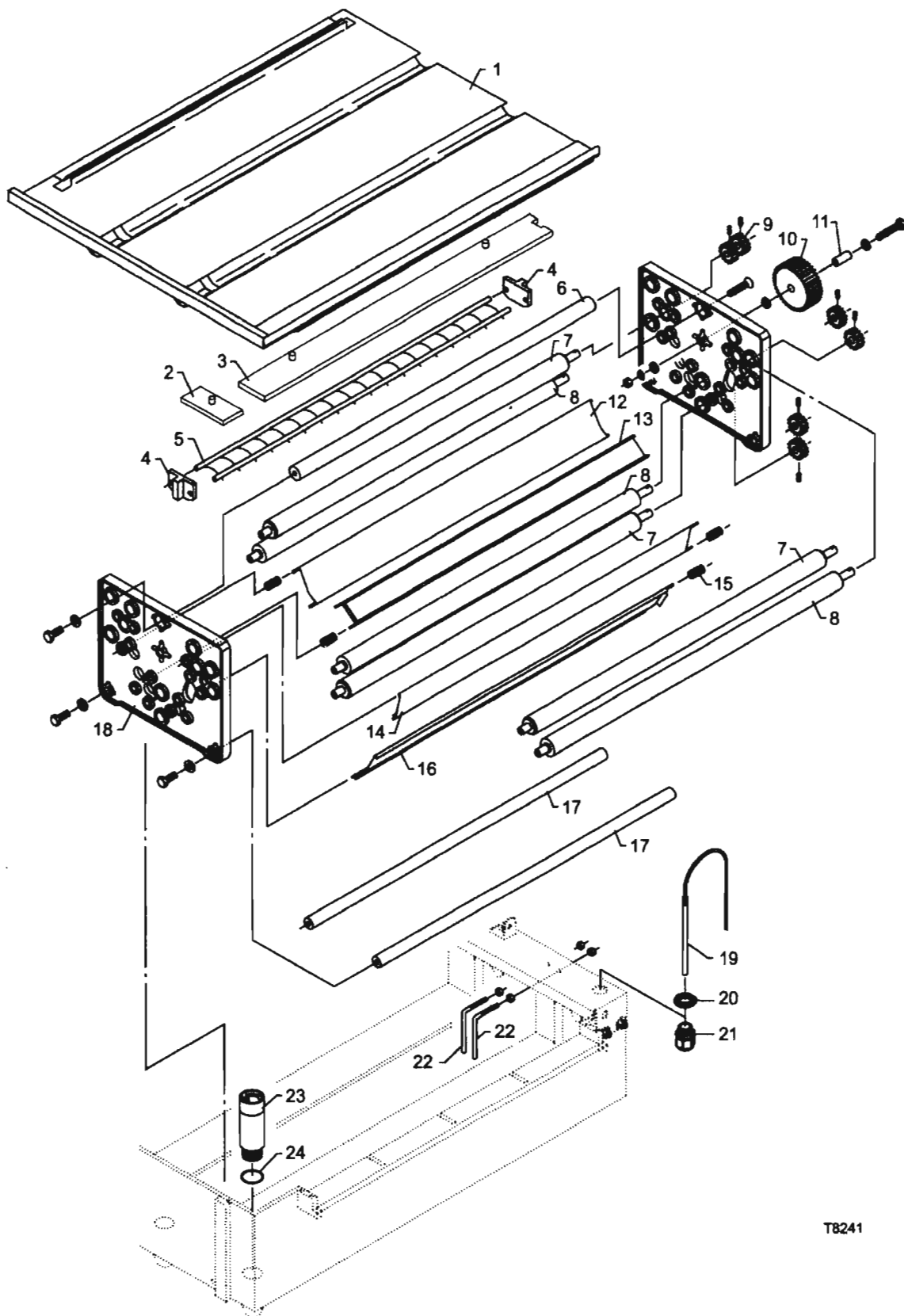


T8240

MAIN DRIVE SYSTEM

## MAIN DRIVE SYSTEM

Pos. No	510/20	720/28	Specification
1	1461X000200	1461X000200	INTERRUPTER, OPTO
2	2201Z000201	2201Z000201	BRACKET, INTERRUPTER
3	1462X000200	1462X000200	DISC, SLOTTED, 60 HOLES
4	1351Z201006	1351Z201600	BEARING, THRUST
5	1351Z000401	1351Z000401	BEARING
6	1301Z000701	1301Z000701	SHAFT, DRIVE
7	4501D130100	4501D130100	CONSOLE, DRIVE SHAFT
8	1360Z000201	1360Z000201	BLOCK, SUPPORT, DRIVE SHAFT
9	1221Z011503	1221Z011503	WORM, SHAFT, DRIVE
10	70161	70161	BEARING
11	1253Z160502	1253Z160502	PULLEY, BELT, DRIVE
12	6101X000200	6101X000200	BELT, DRIVE
13	0104X000200	0104X000200	MOTOR, MAIN
14			
15			
16			
17			
18			
19			
20			
21			
22			
23			
24			
25			
26			
27			
28			
29			
30			

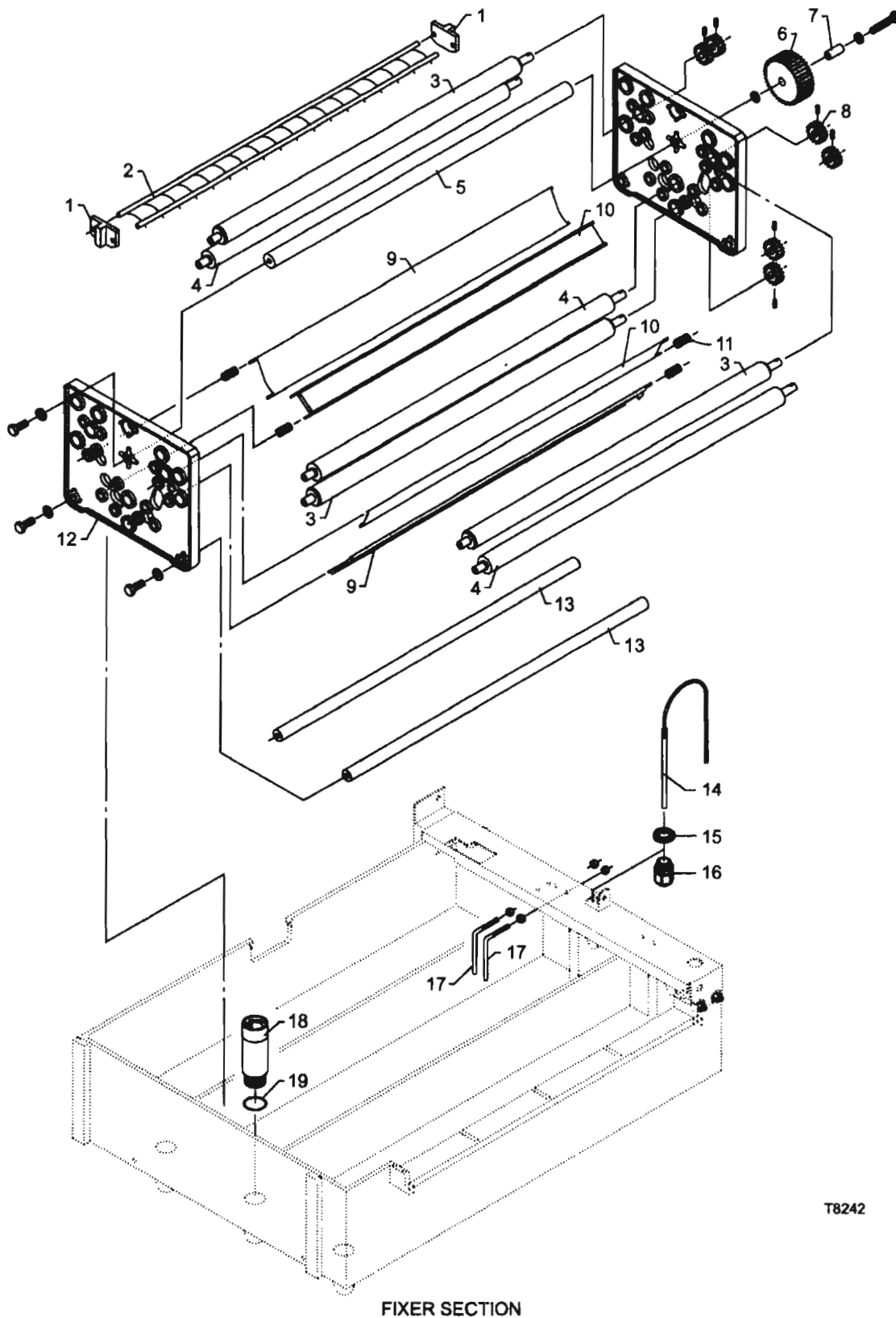


T8241

DEVELOPER SECTION

## DEVELOPER SECTION

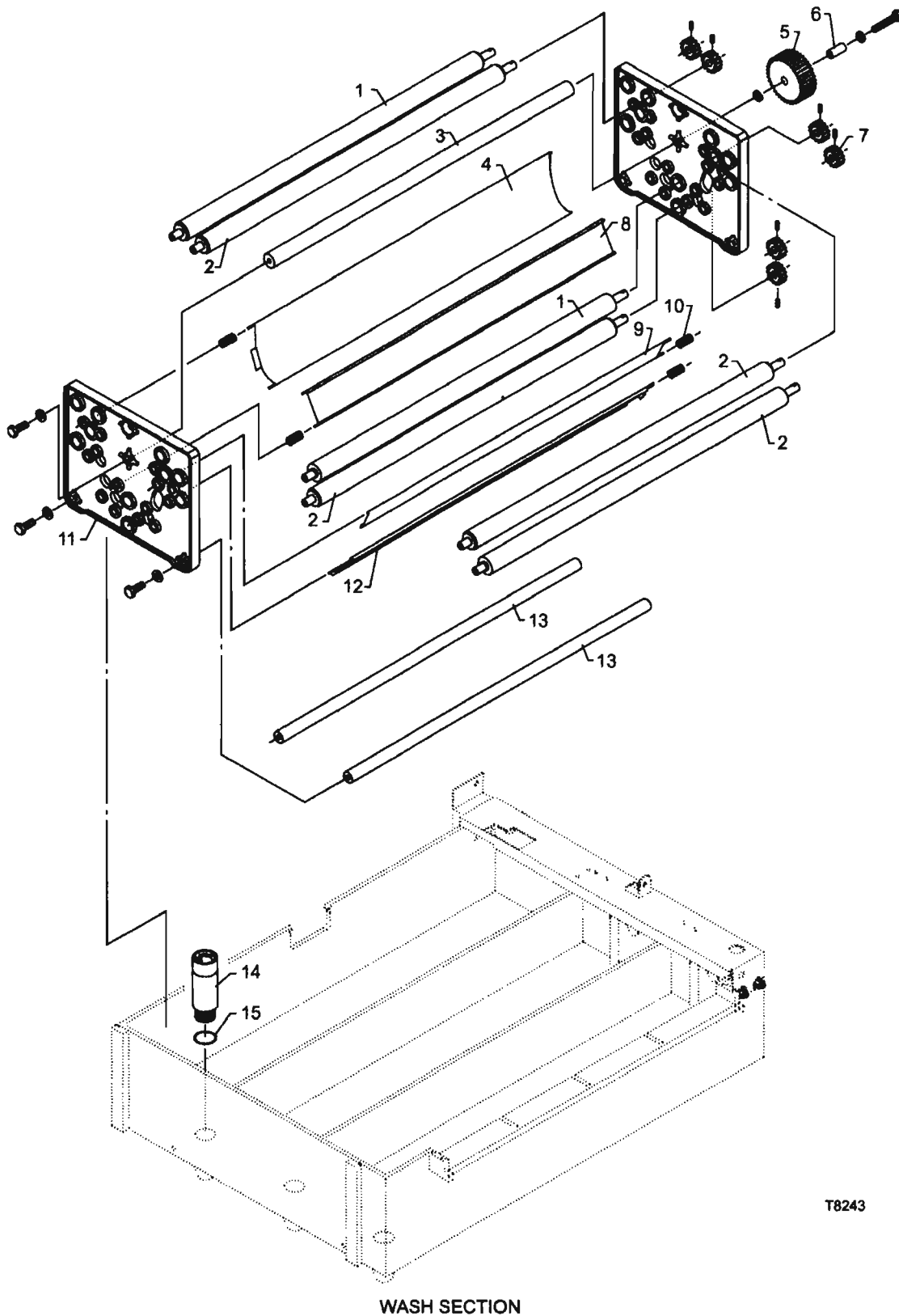
Pos. No	510/20	720/28	Specification
1	4501D120400	4572D120400	LID, CONDENSATION
2			SEE APPENDIX A
3			SEE APPENDIX A
4	4501D210100	4501D210100	BLOCK, GUIDE, CROSS OVER
5	40748	40749	GUIDE, CROSS OVER
6	3101Z200601	3101Z200603	BAR, DISTANCE, D20, RED
7	1110Z037301	1110Z127301	ROLLER, RUBBER
8	1130Z031201	1130Z121201	ROLLER, PUR
9	1282Z161501	1282Z161501	GEAR, Z16
10	1201Z421505	1201<421505	GEAR, Z42
11	1331Z000103	1331Z000103	BUSHING, GEAR
12			SEE APPENDIX A
13			SEE APPENDIX A
14			SEE APPENDIX A
15	70160	70160	SPRING, GUIDE
16			SEE APPENDIX A
17	3103Z151601	3103Z150604	BAR, DISTANCE, D15, GREY
18	3007Z000202	3007Z000202	PLATE, SIDE
19	2101Y000501	2101Y000501	SENSOR, TEMPERATURE
20	2561X000500	2561X000500	NUT, LOCKING, PG11
21	2561X000400	2561X000400	GLAND, CABLE, PG11
22	2301Z000101	2301Z000101	SCREW, LEVEL
23	3201Z326502	3201Z326502	PIPE, OVERFLOW, RED, DEVELOPER
24	8181X000800	8181X000800	O-RING
25			
26			
27			
28			
29			
30			



T8242

## FIXER SECTION

Pos. No	510/20	720/28	Specification
1	4501D120400	4501D120400	BLOCK, GUIDE, CROSS OVER
2	40748	40749	GUIDE, CROSS OVER
3	1110Z037301	1110Z127301	ROLLER, RUBBER
4	1130Z031201	1130Z121201	ROLLER, PUR
5	3102Z200601	3102Z200603	BAR, DISTANCE, D20, BLUE
6	1201Z421505	1201Z421505	GEAR, Z42
7	1331Z000103	1331Z000103	BUSHING, GEAR
8	1282Z161501	1282Z161501	GEAR, Z16
9	2000Z010301	2000Z010302	GUIDE
10	2022Z010101	2022Z010102	GUIDE, 39 MM
11	70160	70160	SPRING, GUIDE
12	3007Z000202	3007Z000202	PLATE, SIDE
13	3103Z150601	3103Z150604	BAR, DISTANCE, D15, GREY
14	2101Z000501	2101Z000501	SENSOR, TEMPERATURE
15	2561X000500	2561X000500	NUT, LOCKING, PG11
16	2561X000400	2561X000400	GLAND, CABLE, PG11
17	2301Z000101	2301Z000101	SCREW, LEVEL
18	3202Z326502	3202Z326502	PIPE, OVERFLOW, FIX, BLUE
19	8181X000800	8181X000800	O-RING
20			
21			
22			
23			
24			
25			
26			
27			
28			
29			
30			

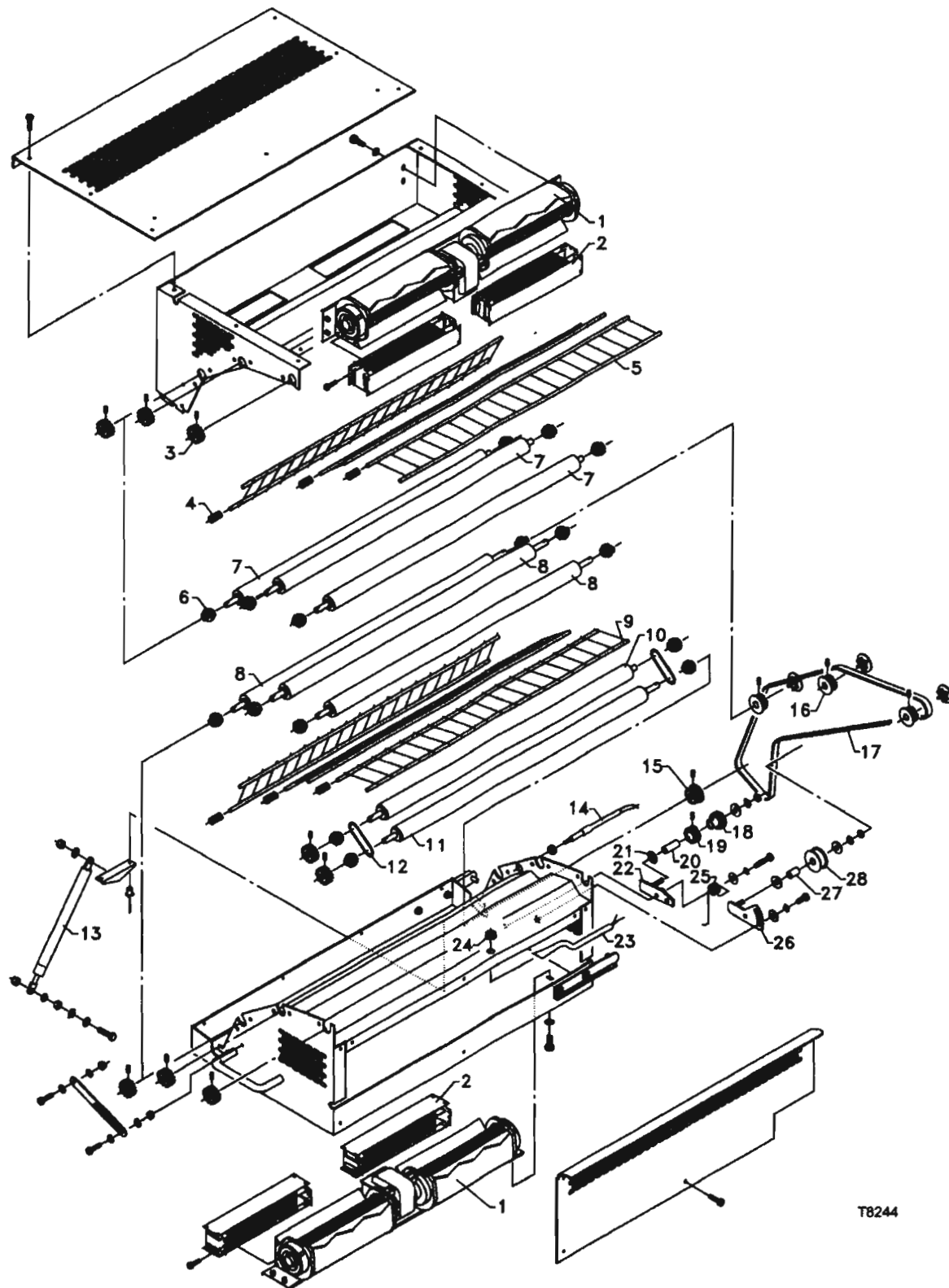


T8243



## WASH SECTION

Pos. No	510/20	720/28	Specification
1	1130Z031201	1130Z121201	ROLLER, PUR
2	1110Z037301	1110Z127301	ROLLER, RUBBER
3	3103Z200601	3103Z200603	BAR, DISTANCE, D20, GREY
4	2000Z010101	2000Z010102	GUIDE
5	1201Z421505	1201Z421505	GEAR, Z42
6	1331Z000103	1331Z000103	BUSHIN, GEAR
7	1282Z161501	1282Z161501	GEAR, Z16
8	2023Z010101	2023Z010102	GUIDE, 51 MM
9	2022Z010101	2022Z010102	GUIDE, 39 MM
10	70160	70160	SPRING, GUIDE
11	3007Z000202	3007Z000202	PLATE, SIDE
12	2000Z010301	2000Z010302	GUIDE
13	3103Z150601	3103Z150604	BAR, DISTANCE, D15, GREY
14	3203Z326502	3203Z326502	PIPE, OVERFLOW, WASH, GREY
15	8181X000800	8181X000800	O-RING
16			
17			
18			
19			
20			
21			
22			
23			
24			
25			
26			
27			
28			
29			
30			

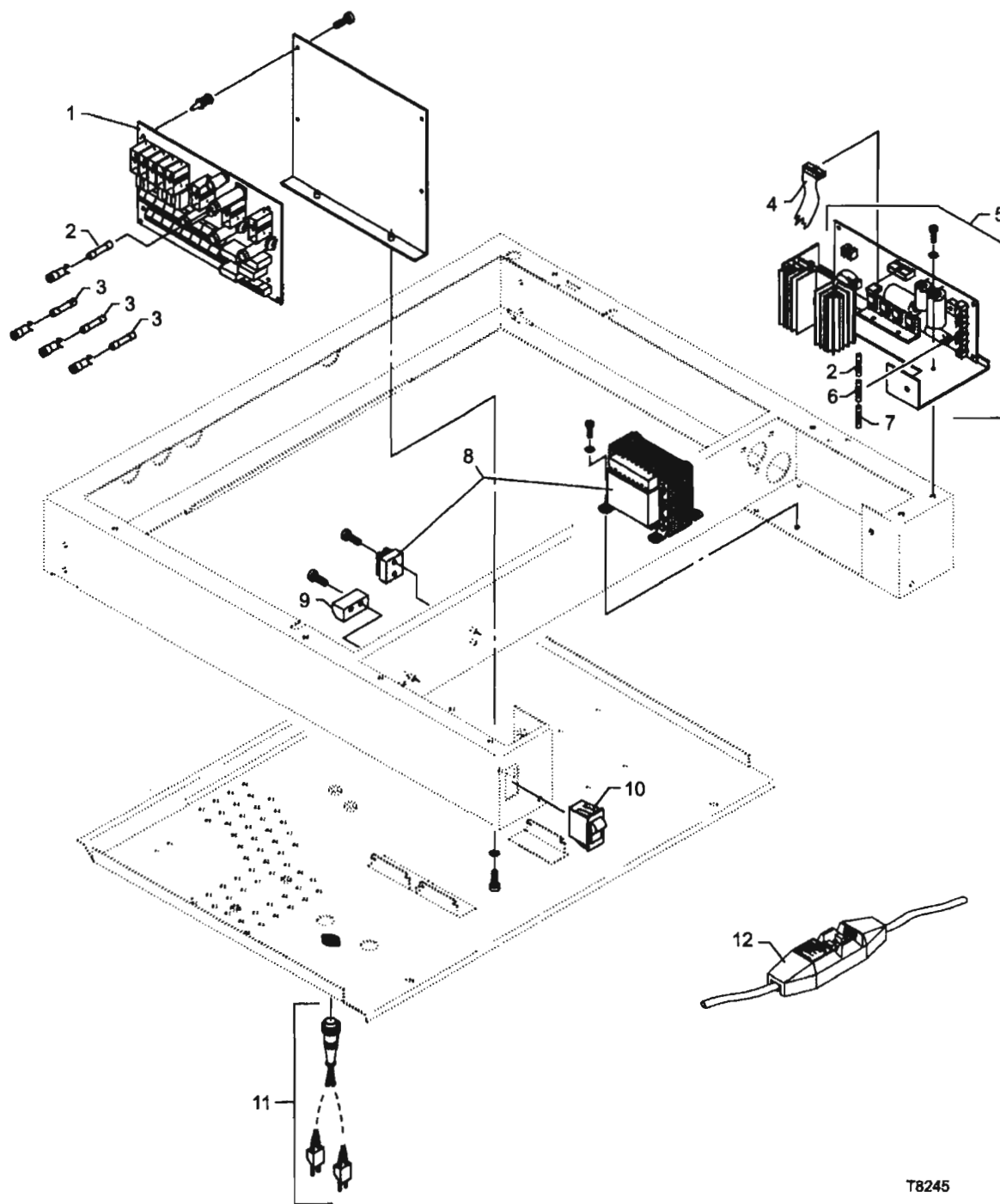


T8244

DRYER SECTION

## DRYER SECTION

Pos. No	510/20	720/28	Specification
1	4501D241350	4572D241350	BLOWER, COMPLETE
2	0401X000900	0401X002300	HEATING ELEMENT
3	1282Z161501	1282Z161501	GEAR, Z16
4	2131Z000101	2131Z000101	SPRING, LADDER GUIDE
5	2111Z020101	2111Z020102	GUIDE, LADDER, 70/80
6	1351Z000601	1351Z000601	BEARING
7	1150Z031201	1150Z121201	ROLLER, PUR, 15/25
8	1150Z033125	1150Z123125	ROLLER, PUR, 25/30
9	2111Z010101	2111Z010102	GUIDE, LADDER, 65/75
10	1110Z037301	1110Z127301	ROLLER, RUBBER, 13/25
11	1110Z033134	1110Z123134	ROLLER, RUBBER, 25/30
12	388FGJ8234413	388FGJ8234413	SPRING, ROLLER
13	35007	6221X000204	SPRING, GAS
14	2101Y000302	2101Y000302	SENSOR, TEMPERATURE
15	12532160504	1253Z160504	PULLEY, DRIVE, BELT, 1 FLANGE
16	1253Z160502	1253Z160502	PULLEY, DRIVE, BELT
17	6101X000300	6101X000300	DRIVE, BELT
18	1212Z161501	1212Z161501	WORM WHELL
19	1254Z160501	1254Z160501	PULLEY, DRIVE, BELT, ST.ST.
20	1331Z000102	1331Z000102	BUSHING, L=24
21	24430	24430	WASHER, NYLON
22	4501D241200	4501D241200	BRACKET, DRIVE, MAIN
23	70055	70055	SWITCH, OVERHEAT
24	70139	70139	GROMMET
25	2131Z000501	2131Z000501	SPRING, DRIVE, MAIN
26	2205Z000401	2205Z000401	BRACKET, WHEEL, INTERMEDIATE
27	1331Z000104	1331Z000104	BUSHING, L=16
28	1241Z000102	1241Z000102	ROLLER, TENSION
29			
30			



T8245

ELECTRONICS

Pos. No	510/20	720/28	Specification
---------	--------	--------	---------------

8.21