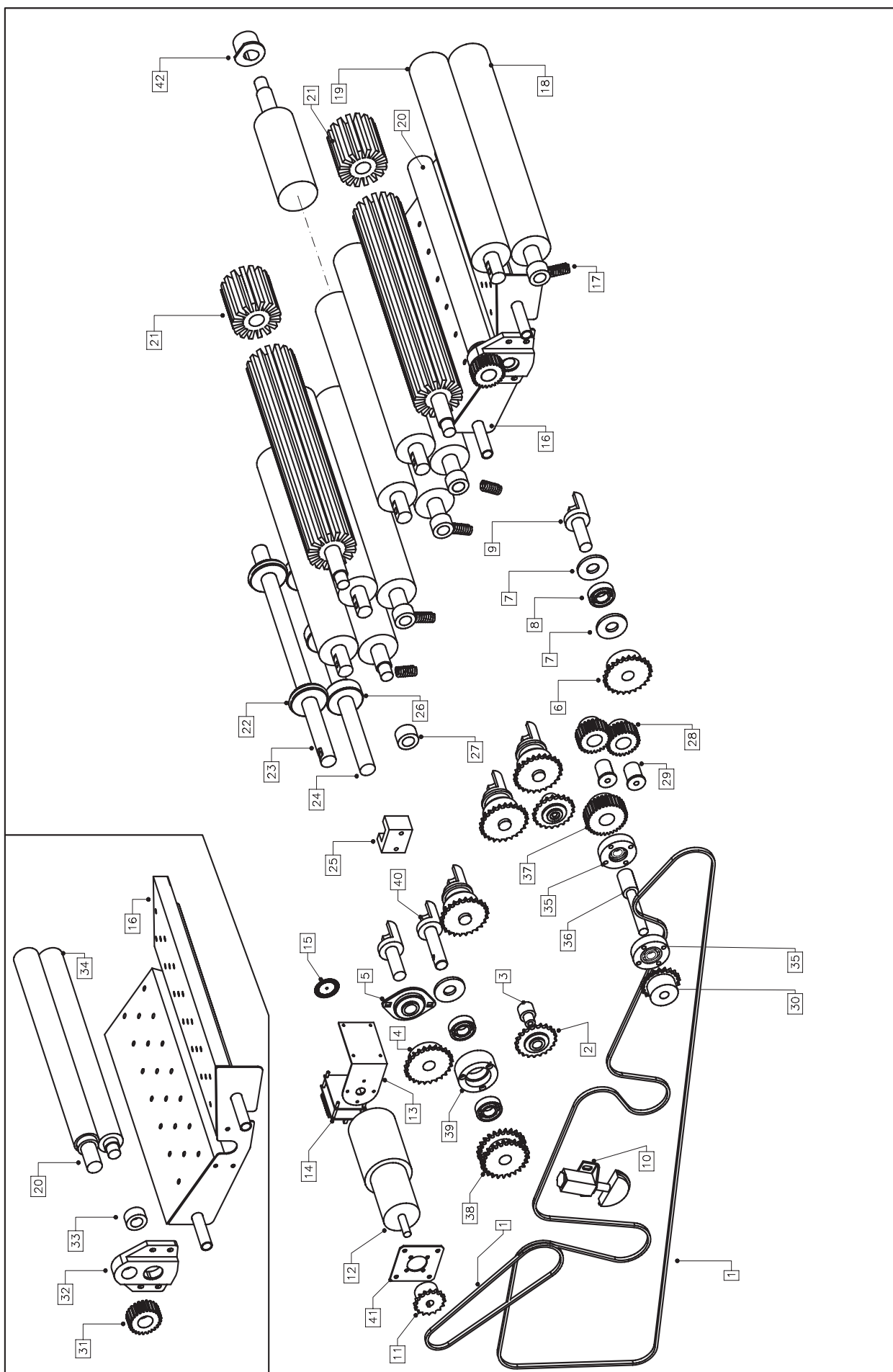
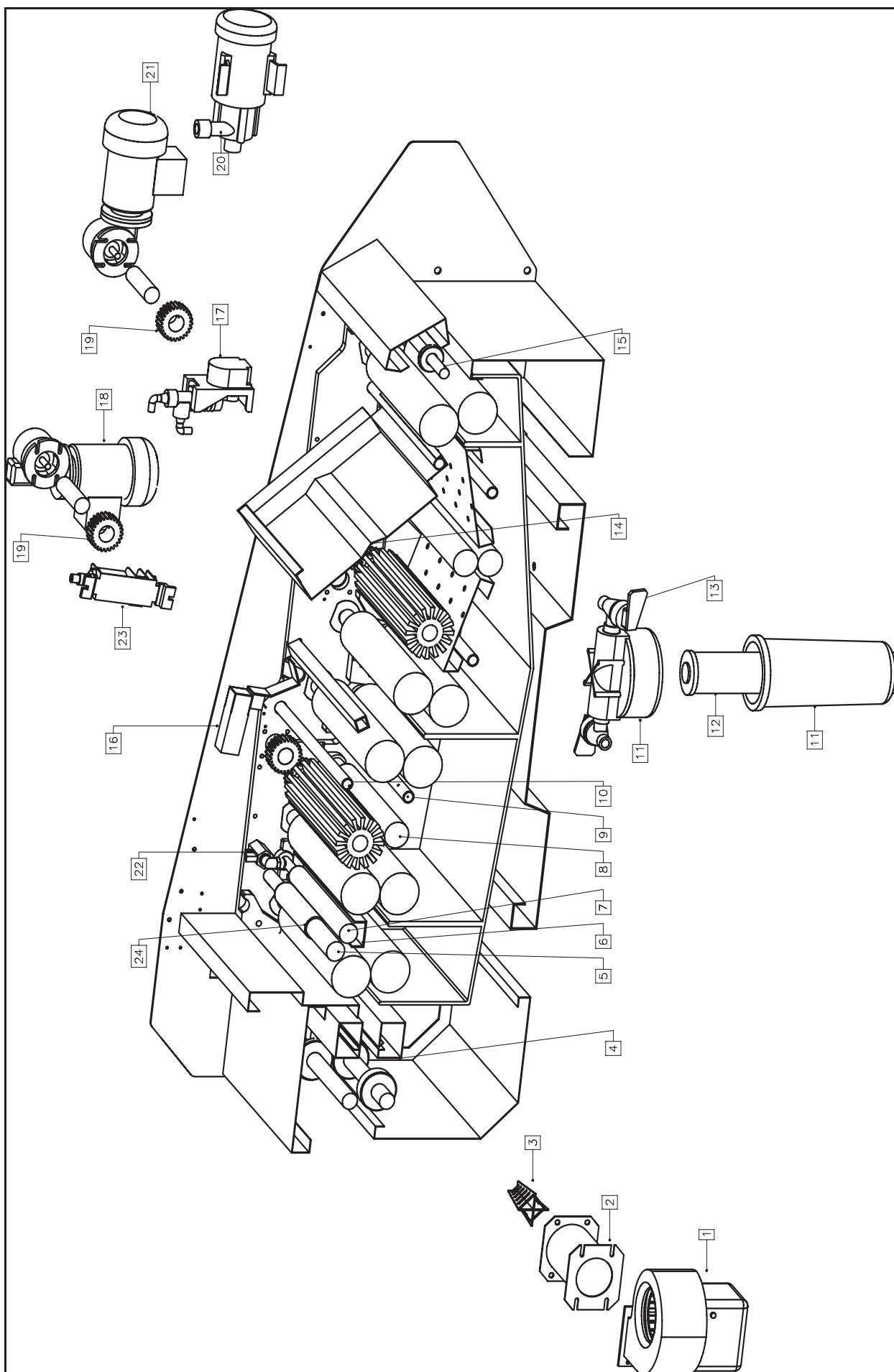


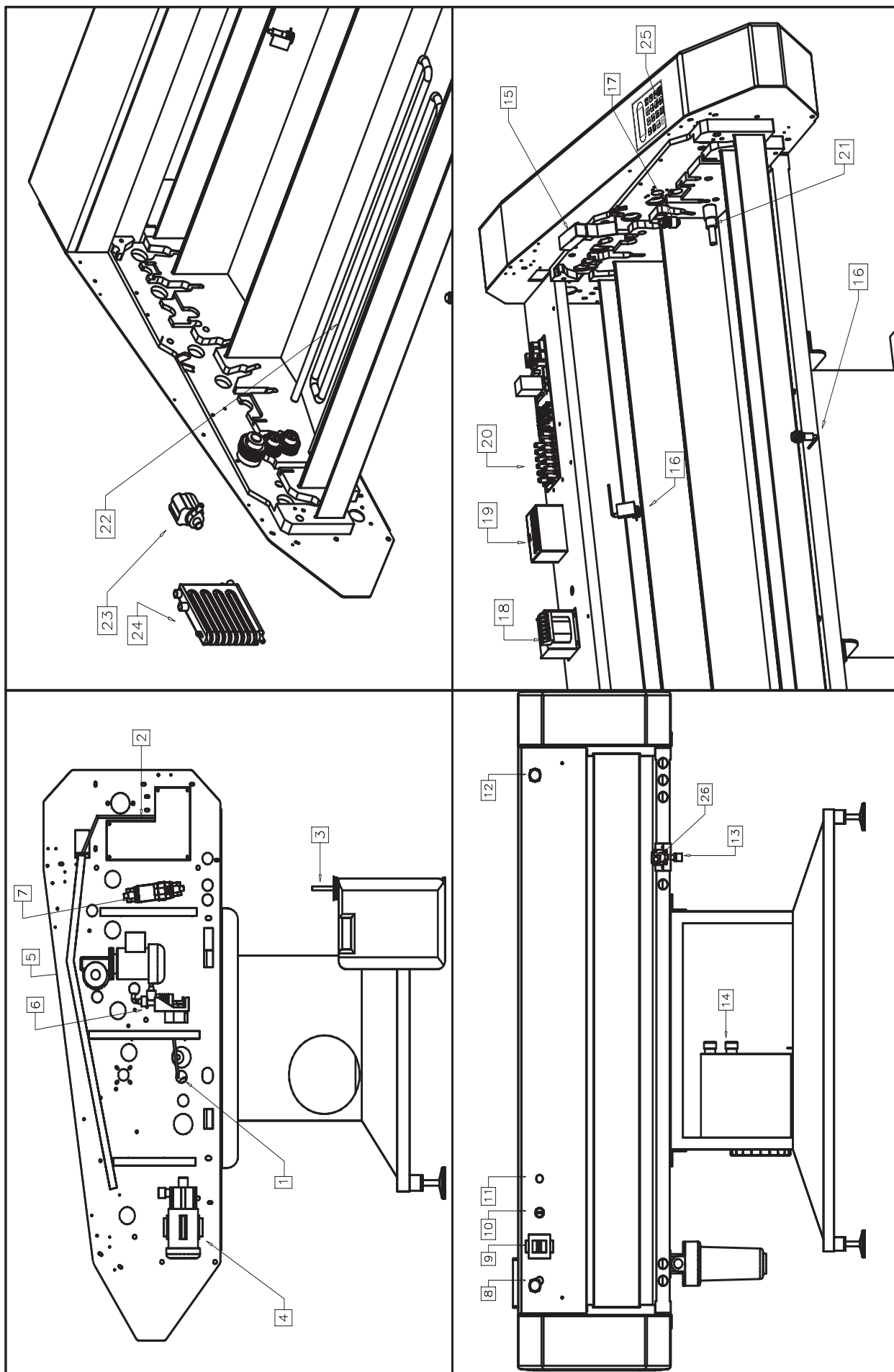
Pos.	95 S	125 S	150 S	DESCRIPTION
1	LX+095SVL0159	LX+150SVL0159		BASE STRUCTURE
2	LX+000MEC0011			ADJUSTABLE FEET M.14 D.80
3	LX+095SVL0032	LX+150SVL0032		DOOR
4	LX+095SVL0002	LX+125SVL0002	LX+150SVL0002	BASE PLATE
5	LX+150SVL0135			FIBREGLASS COVER, LEFT
6	LX+065SVL0002			LEG
7	LX+095SVL0045	LX+125SVL0045	LX+150SVL0045	EXIT TABLE FRAME
8	LX+095SVL0095	LX+125SVL0095	LX+140SVL0017	EXIT TABLE
9	LX+095SVL0165	LX+125SVL0165	LX+150SVL0165	COVER, PLASTIC, REAR
10	LX+095SVL0064	LX+125SVL0064	LX+150SVL0064	COVER, PLASTIC, BAR
11	LX+095SVL0164	LX+125SVL0164	LX+150SVL0164	COVER, PLASTIC, FRONT
12	LX+095SVL0033	LX+125SVL0033	LX+150SVL0033	COVER, FRONT, UPPER
13	LX+150SVL0136			FIBREGLASS, COVER, RIGHT
14	LX+150SVL0028			AIR DUCT, RIGHT
15	LX+095SVL0036	LX+125SVL0036	LX+150SVL0036	INTERNAL COVER
16	LX+095SVL0132	LX+125SVL0132	LX+150SVL0132	COVER, REAR, UPPER
17	LX+095SVL0035	LX+125SVL0035	LX+150SVL0035	COVER, ELECTRIC SUPPLY
18	LX+095SVL0037	LX+125SVL0037	LX+150SVL0037	COVER, REAR, LOWER
19	LX+150SVL0027			AIR DUCT, LEFT
20	LX+095SVL0031	LX+125SVL0031	LX+150SVL0031	COVER, FRONT, LOWER
21	LX+095SVL0041	LX+125SVL0041	LX+150SVL0041	FEED TABLE
22	LX+095SVL0042	LX+125SVL0042	LX+150SVL0042	FEED TABLE FRAME
23	LX+150SVL0075			SUPPORT, DEVELOPER TANK
24	LX+000ELM0009			COOLING UNIT GS 10 R



Pos.	95 S	125 S	150 S	DESCRIPTION
1		LX+000MEC0108		CHAIN S3/8 331P
2		LX+000MEC0019		SPROCKET Z.21
3		LX+150SVL0024		SHAFT
4		LX+150SVL0068		SPROCKET Z.25 3/8
5		LX+000MEC0076		BEARING 1726204-2RS1
6		LX+090SVL0035		SPROCKET Z.25
7		LX+150SVL0021		PLASTIC RING
8		LX+000MEC0073		BEARING 6004-2RS1
9		LX+150SVL0020		DRIVE SHAFT
10		LX+000MEC0104		CHAIN TENSIONER
11		LX+150SVL0146		SPROCKET Z.16 3/8"
12		LX+000ELM0079		DRIVE MOTOR EPIC.P52/3 1/181
13		LX+150SVL0071		ENCODER,SUPPORT
14		LX+000ELE0418		ROLLER POWER SLAVE
15		LX+000ELE0033		ENCODER WHEEL
16	LX+095SVL0163	LX+125SVL0163	LX+150SVL0163	DRILLED DEVELOPER PLATE GUIDE
17		LX+150SVL0072		SPRING
18	LX+095SVL0010	LX+125SVL0010	LX+150SVL0010	ROLLER, RUBBER, BOTTOM
19	LX+095SVL0011	LX+125SVL0011	LX+150SVL0011	ROLLER, RUBBER, TOP
20	LX+095SVL0109	LX+125SVL0109	LX+150SVL0109	ROLLER,RUBBER,TOP,DEV. TANK
21		LX+000MEC0078		BRUSH,SINGLE PART L 100mm
	9 pz.	12 pz.	15 pz.	
22		LX+150SVL0062		O-RING WHEEL D.60
23	LX+095SVL0017	LX+125SVL0017	LX+150SVL0017	ROLLER, RUBBER, TOP
24	LX+095SVL0018	LX+125SVL0018	LX+150SVL0018	ROLLER, RUBBER, BOTTOM
25		LX+150SVL0025		SUPPORT
26		LX+090SVL0062		WHEEL D.60 EXIT ROLLER
27		LX+150SVL0023		BEARING
28		LX+150SVL0110		GEAR Z.25 M.2
29		LX+150SVL0103		SHAFT
30		LX+150SVL0111		SPROCKET Z.20 3/8"
31		LX+150SVL0110		GEAR Z.25 M.2
32		LX+150SVL0117		SUPPORT
33		LX+150SVL0127		BEARING
34	LX+095SVL0119	LX+125SVL0119	LX+150SVL0119	ROLLER,RUBBER,BOTTOM,DEV.TANK
35		LX+150SVL0104		SUPPORT
36		LX+150SVL0105		SHAFT
37		LX+150GOM0011		GEAR Z.32
38		LX+150SVL0154		SPROCKET Z.25
39		LX+150SVL0152		SUPPORT
40		LX+150SVL0153		DRIVE SHAFT
41		LX+150SVL0129		SUPPORT,DRIVE MOTOR
42		LX+150SVL0026		BEARING,ROLLER, TOP



Pos.	95 S	125 S	150 S	DESCRIPTION
1		LX+000ELE0022		FAN VC 10 AA
2		LX+150SVL0052		DRYING RESISTANCE,PIPE
3		LX+000ELE0027		DRYING RESISTANCE PHON 800WATT
4	LX+095SVL0007	LX+125SVL0007	LX+150SVL0007	AIR DRYING PIPE
5	LX+095SVL0015	LX+125SVL0015	LX+150SVL0016	GUM ROLLER, WITHOUT MOLOTON
6	LX+095SVL0038	LX+125SVL0038	LX+150SVL0038	GUM TANK
7	LX+095SVL0015	LX+125SVL0015	LX+150SVL0015	GUM ROLLER
8	LX+095SVL0014	LX+125SVL0014	LX+150SVL0014	ROLLER,S.STEEL
9	LX+095SVL0176	LX+125SVL0176	LX+150SVL0176	SPRAY BAR, WASH, LOWER
10	LX+095SVL0175	LX+125SVL0175	LX+150SVL0175	SPRAY BAR, WASH, UPPER
11		LX+000RAC0015		FILTER E3P 3/4"
12		LX+000RAC0211		FILTER CARTRIDGE 75 MICR
13		LX+000RAC0137		TAP R 3/4"C
14	LX+095PLY0012	LX+125PLY0012	LX+150PLY0012	DEVELOPER COVER
15	LX+095SVL0082	LX+125SVL0082	LX+150SVL0082	GUIDE ROLLER
16		LX+000ELE0102		SWITCH INTERLOCK
17		LX+000ELM0023 LX+000ELM0069		GUM PUMP GR.14825/507 BELLOW PUMP 16504-055
18		LX+000ELM0046		BRUSH MOTOR (50HZ VERSION)
		LX+000ELM0082		BRUSH MOTOR (60HZ VERSION)
19		LX+150SVL0030		BRUSH GEAR Z.25
20		LX+000ELM0074		PUMP MR-20-230 L
21		LX+000ELM0046		BRUSH MOTOR (50HZ VERSION)
		LX+000ELM0082		BRUSH MOTOR (60HZ VERSION)
22		LX+000RAC0160		GUM TAP
23		LX+000ELM0023		GUM PUMP G.R. 14825/507
24		LX+000RAC0040		MOLOTON 70 - 90



Pos.	95 S	125 S	150 S	DESCRIPTION
1		LX+000ELE0435		TEMPERATURE SENSOR
2		LX+000ELE0435		TEMPERATURE SENSOR
3		LX+000ELE0415		GUM/REPLENISHER LEVEL SWITCH
4		LX+000ELM0014		PUMP P023
5		LX+000ELM0046		BRUSH MOTOR (50HZ VERSION)
		LX+000ELM0082		BRUSH MOTOR (60HZ VERSION)
6		LX+000ELM0023 LX+000ELM0069		PUMP GR.14825/507 BELLOW PUMP 16504-055
7		LX+000ELM0023		GUM PUMP GR. 14825/507
8		LX+000ELE0112		EMERGENCY SWITCH
9		LX+000ELE0076		MAIN SWITCH S252
10		LX+000ELE0081		KEY,SWITCH
11		LX+000ELE0272		START BUTTON RM122
12		LX+000ELE0112		EMERGENCY SWITCH, LEFT
13		LX+000ELM0052		SOLENOID VALVE 107C (WITHOUT COIL)
14		LX+000ELM0009		COOLING UNIT GS 10 R
15		LX+000ELE0102		SWITCK INTERLOCK
16		LX+000ELE0127		OPTICAL SENSOR
17		LX+000ELE0428		DEVELOPER LEVEL SWITCH
18		LX+000ELE0421		TRANSFORMER 200/300 50VA 0/24
19		LX+000ELE0477		SLAVE IN/OUTPUT
20		LX+000ELE0478		POWER SUPPLY
21		LX+150SVL0157		TUBE, COOLING
22	LX+095SVL0155	LX+125SVL0155	LX+150SVL0155	SENSOR
23		LX+000ELM0072		PUMP PEK 400
24		LX+000RAC0041		REFRIGERATOR TANK
25		LX+000ELE0461		CONTROL BOX
26		LX+000ELM0051		COIL