

## How to use this document

This tool replaces the legacy Fiery® color flow chart illustration. It is intended to show users the detailed color processing path on the Fiery server. The tool is delivered as a video presentation, click here to access the [video](#). See the back page for the recommended Fiery expert color settings. This page describes the basics of accessing the expert settings along with some key concepts related to digital front end (DFE) color management.

## Managing various color spaces

Users are able to send jobs to the Fiery server containing a variety of color spaces. The Fiery server processes each of the many color types for precise color output and consistency. Fiery servers offer advanced color management capabilities that provide users with greater color control. The expert features and options allow users to customize workflows to deliver accurate color every time.

This document provides examples of the impact of various color management settings to help guide you to configuring the Fiery server for the best color result. Although not every possible combination of options is presented, enough information is provided to ensure that you can make the correct decisions when setting up your workflows and output devices.

In a traditional print environment, CMYK workflows were often preferred. Fiery servers’ color technology allow the flexibility to work in a variety of color spaces like CMYK, RGB, device independent color spaces, and custom spot colors without having to modify the native content to be compatible with a traditional print workflow.

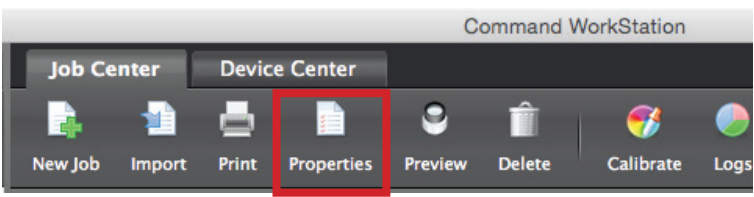
## How do I know what color space I am using?

As content is designed in a native application, this provides the first source of information on the color type. Business applications typically use RGB while graphics applications can draw with CMYK, RGB and custom spot colors. Digital cameras capture images in RGB, and corporate logos are often created using spot colors from industry standard color libraries. If you do not have access to the native content, the Fiery Server has utilities in the Graphic Arts Package, premium edition (or Productivity Tools) that can help you identify documents’ color content.

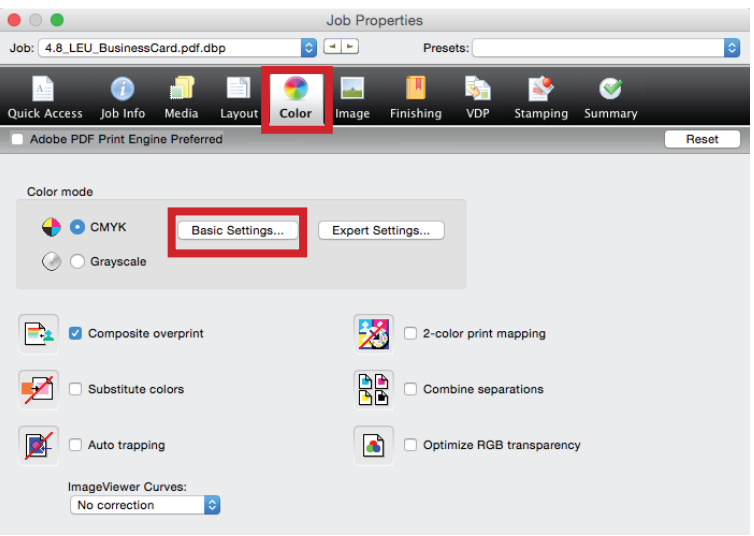
## Print Gray Using Black Only

Color management is designed to convert color from a source device to a destination device and closely maintain the color appearance between these different devices. For example printing a RGB photograph from a digital camera to a printer using CMYK. A side effect of this design is converting pure colors like Black and Gray into the print system’s CMYK. This can affect the neutral appearance of gray and add unwanted color clicks to the print job. Fiery servers’ Gray and Black processing eliminate this problem by preserving the source Black and Gray colors to print with only the print system’s black ink saving cost on ink consumption.

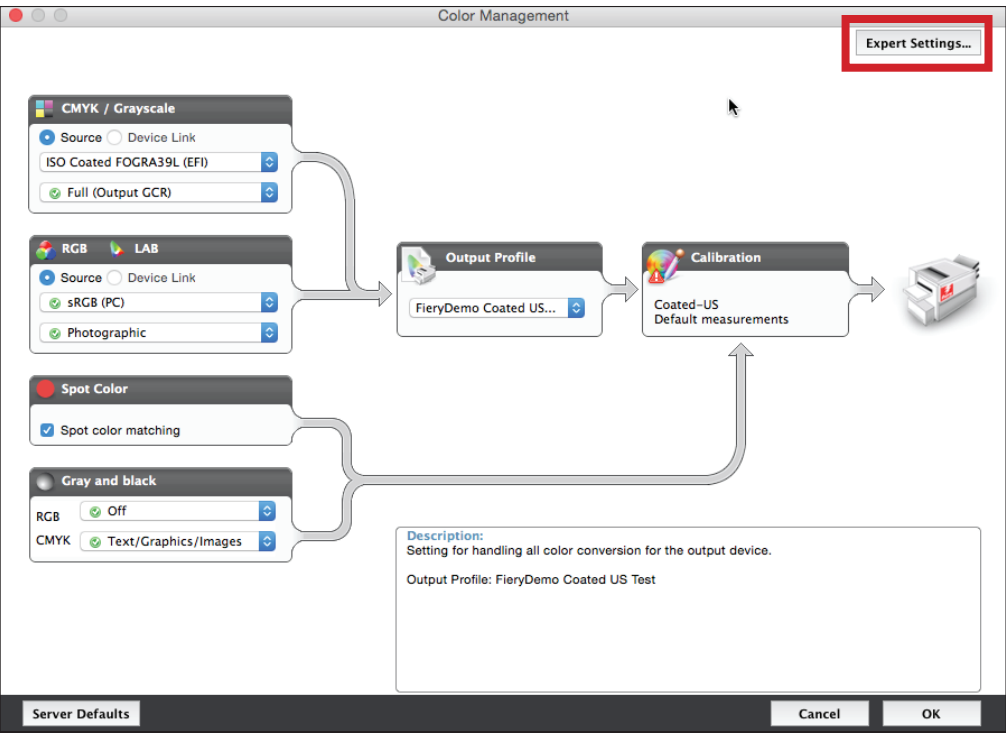
## How to access the expert color settings on your Fiery DFE



1. Select Properties after highlighting a job in the list from within Fiery Command WorkStation



2. Select the Color Tab and then Basic Settings to view the standard color settings



3. To access all the color settings explained in this document, click on Expert Settings

# Fiery Color Flowchart 2016 – Expert Color Management Best Practice Settings

Color Management

Color Input | Gray & Black Processing | Output

**CMYK/Grayscale**

☒ Source ☐ Device Link

ISO Coated FOGRA39L (EFI)

☐ Use embedded profile when present

Processing method:

☒ Full (Output GCR)

☒ Black point compensation

☐ Paper simulation

☐ PDF/X output intent

**RGB Lab**

☒ Source ☐ Device Link

RGB ☒ sRGB (PC)

☒ Use embedded profile when present

Lab source uses CIELab

Rendering intent:

☒ Photographic

☐ Separate RGB/Lab to CMYK source

**Spot color**

☒ Spot color matching

Color Input | Gray & Black Processing | Output

Default output profile:

☒ Use media defined profile

Color Input | Gray & Black Processing | Output

**Gray**

RGB Text/Graphics

CMYK Text/Graphics/Images

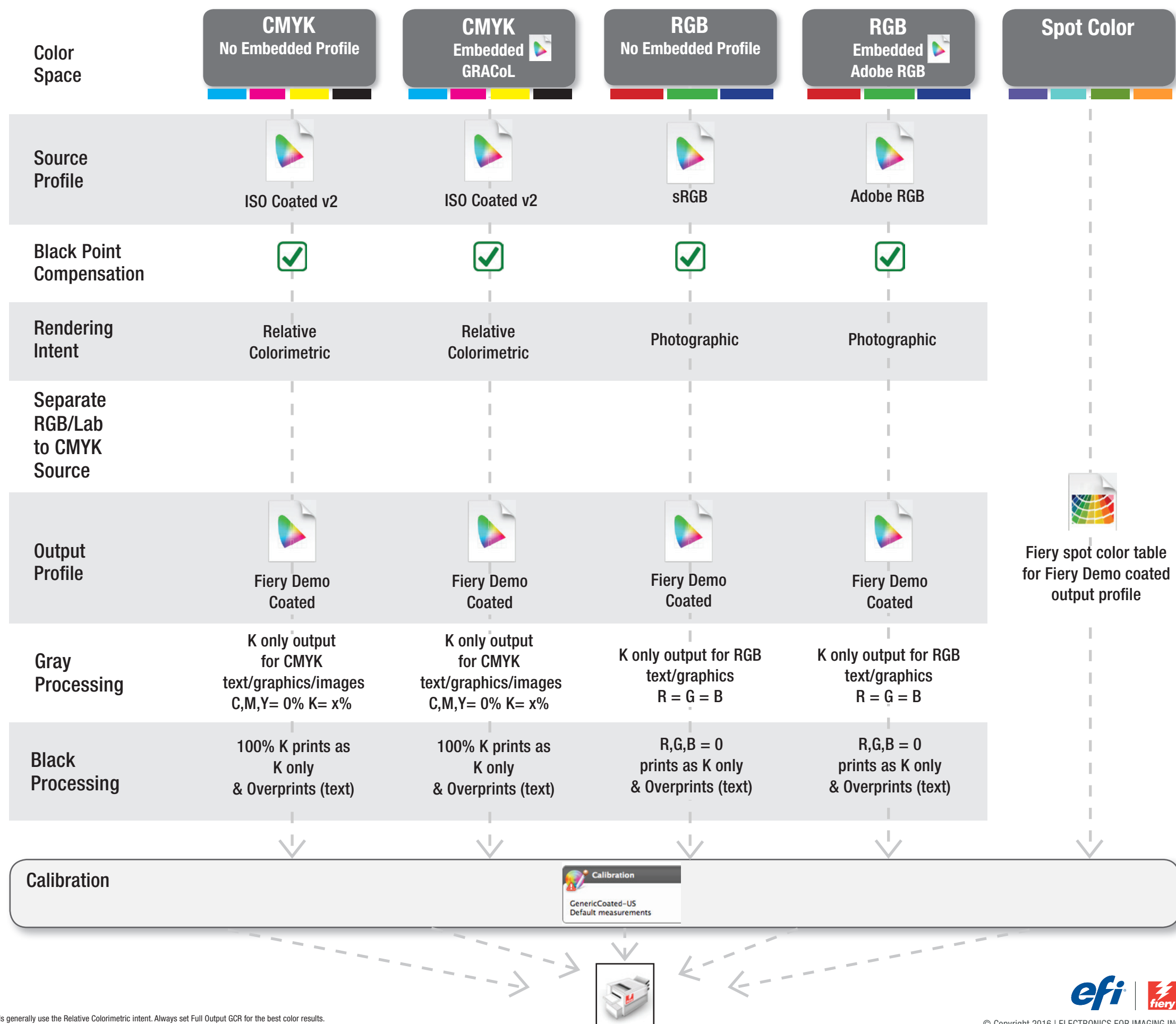
**Black**

Black text and graphics:

Pure Black On

Black overprint (for pure black):

Text



\* Fiery CMYK processing methods generally use the Relative Colorimetric intent. Always set Full Output GCR for the best color results.

## Fiery Color Flowchart Settings – Output Profile

### Automated output profile selection on the Fiery server

This diagram demonstrates how the automated outprofile selection works on the Fiery server. First, look at the Job Properties within Fiery Command WorkStation and check to see if “Use Media Defined Profile” is selected for the job. Follow the chart below to see how the output profile selection is determined.

