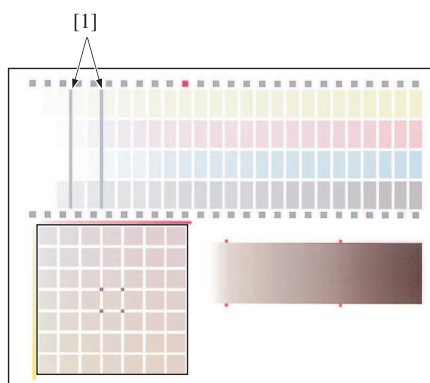


- 1 Follow the procedure on page 9-2 to display the Administrator Setting Menu Screen.
- 2 Press [01 System Setting], [04 Expert Adjustment], [04 Quality Adjustment], and [01 Printer Gamma Offset Adj.] in sequence.  
The Printer Gamma Offset Adjustment Screen will be displayed.
- 3 Use [Next] and [Previous] to select the screen to be adjusted.  
→ Contone is the screen used in texts when Line 1, Line 2, Dot 1, or Dot 2 is used, and consequently does not require this adjustment.
- 4 Press [Print Mode].  
The Print Mode Screen will be displayed.
- 5 Select 8.5 × 11 (A4 ), then press **Start** on the **control panel**.  
A test chart will be output.
- 6 Press [Exit Print Mode] to return to the Printer Gamma Offset Adjustment Screen.
- 7 Check the output chart.  
Check that the highlights of C and K start uniformly and appear aligned to the gray base line [1].



- 8 Make an adjustment, if required.  
Press the color key (C or K) to be adjusted, then use the touch panel keypad or **control panel keypad** to enter the desired adjustment value.  
→ First enter the numeric value, then use [+/-] to specify the value to be positive or negative.  
→ Press [Set] to change the current value.  
→ Adjustment Range: -128 (lighter) to +127 (darker)
- 9 Repeat the steps from 4 to 8 until the desired result is obtained.

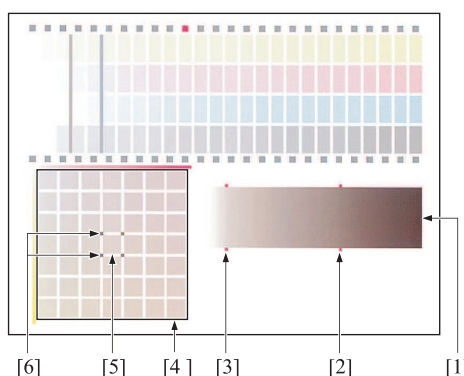
- 10** Next, focusing on the gray gradation pattern [1] created with C, M, and Y, check that the gray balance shows uniformity in the sections of square marks [2] and [3].



If the gray balance shows any difference, press the color key (Y or M) to be adjusted, then use the touch panel keypad or **control panel keypad** to enter the desired adjustment value.

- First enter the numeric value, then use [+/-] to specify the value to be positive or negative.
- Press [Set] to change the current value.
- Adjustment Range: -128 (lighter) to +127 (darker)

Follow the procedure below to adjust the gray balance.

- Focus on the 49 gray patches [4] created with C, M, and Y. These 49 patches show that M becomes deeper to the right, and Y becomes deeper to the bottom. C is fixed. The color of the patch in the center [5] is the same as the gray [2].
- The color of the patches at four corners [6] of the patch [5] is the same as the gray [3]. Select the gray of the same hue as that of the gray [6] from among 49 patches.
- When the appropriate patch is located in the lower right area of the central patch [5]: Adjust M and Y to the positive direction.
- When the appropriate patch is located in the lower left area of the central patch [5]: Adjust M and Y to the negative direction.



- 11** Press [Print Mode].  
The Print Mode Screen will be displayed.
- 12** Select 8.5 × 11  (A4 ), then press **Start** on the **control panel**.  
A test chart will be output.
- 13** Press [Exit Print Mode] to return to the Printer Gamma Offset Adjustment Screen.
- 14** Repeat the steps from 9 to 12 until the desired result is obtained.
- 15** Press [Return] to restore the Printer Adjustment Menu Screen.

### 9.7.22 [04 Expert Adjustment] - [04 Quality Adjustment] - [02 Stabilization Adj. Setting]

Specify the frequency of Maximum and Medium Density Corrections to stabilize the image quality.