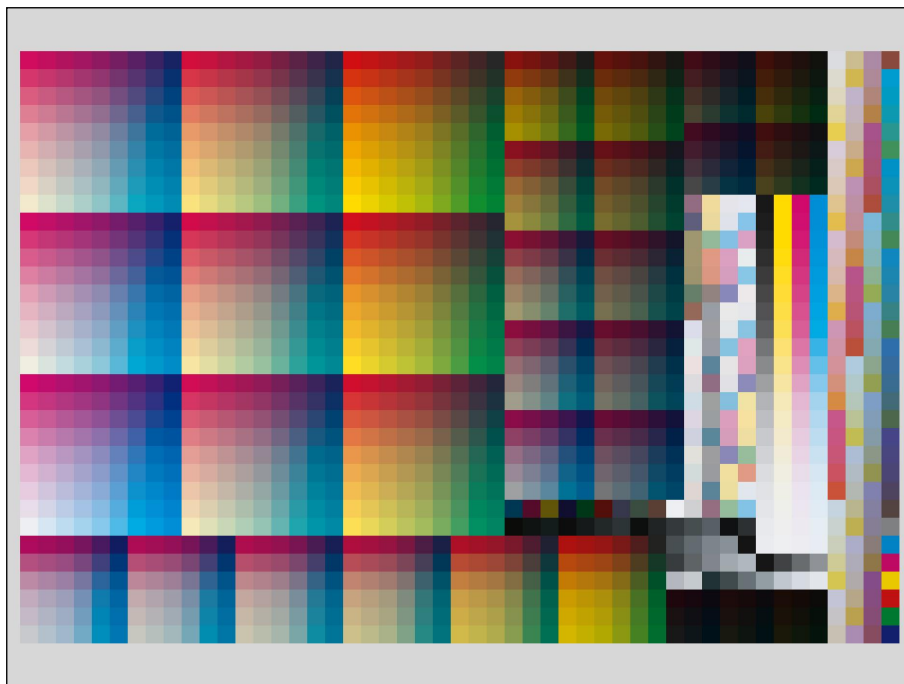


# Color quality certificate



Measurement [FOGRA39L.txt](#)

Standard: ISO 12647-2\_2007WB

Paper: glossy coated

Measuring method

Illuminant:

Observer:

Density standard:

Polarisation:

Measuring device:

Job number: Heidelberg Colortoolbox 10

Job name: IT8 7/4 R

Sheet number: \_\_\_\_\_

Comment: \_\_\_\_\_

Job number: Heidelberg Colortoolbox 10

Job name: IT8 7/4 R

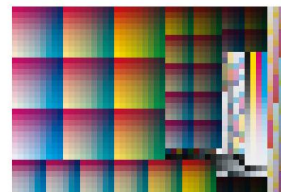
Sheet number: \_\_\_\_\_

Comment: \_\_\_\_\_

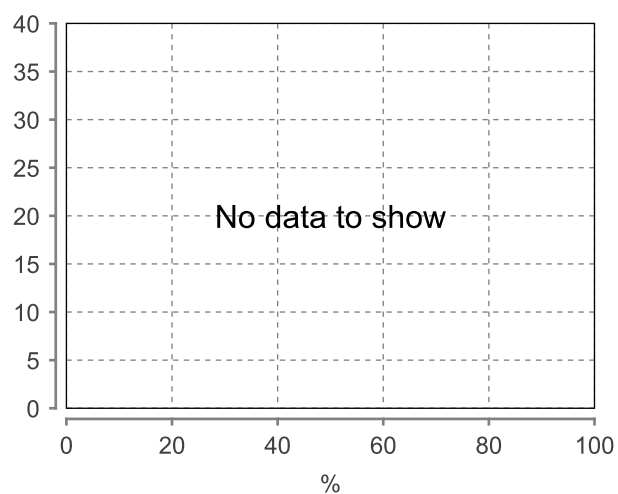
Measuremen FOGRA39L.txt

Standard: ISO 12647-2\_2007WB

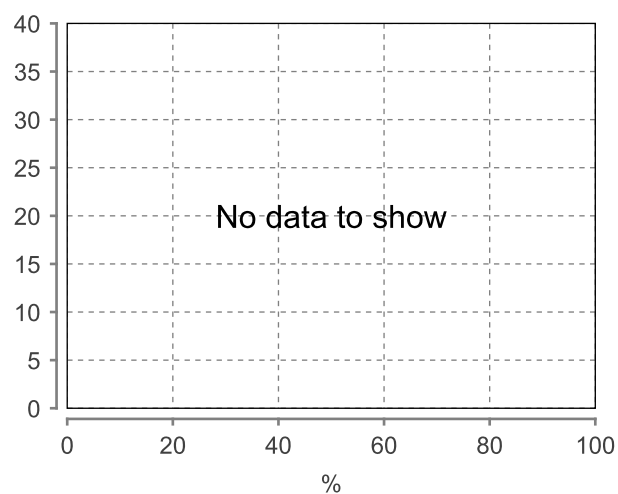
Paper: glossy coated



Dot Gain (CMY)



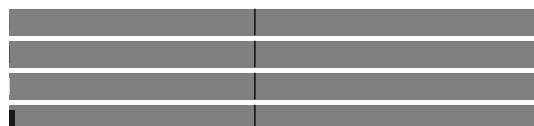
Dot Gain (K)



	Paper	d
L	95.00	0.00
a	-0.01	-0.01
b	-1.98	0.02



	L	a	b	dE
CYAN	55.00	-37.00	-49.98	0.02
MAGENTA	47.99	74.01	-2.98	0.02
YELLOW	89.00	-4.98	92.99	0.02
BLACK	16.00	-0.11	0.03	0.11



Job number: Heidelberg Colortoolbox 10

Job name: IT8 7/4 R

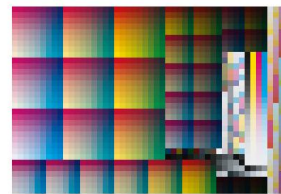
Sheet number: \_\_\_\_\_

Comment: \_\_\_\_\_

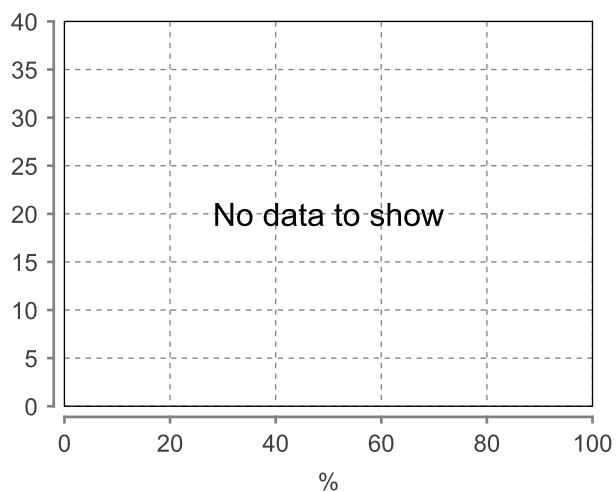
Measuremen FOGRA39L.txt

Standard: ISO 12647-2\_2007WB

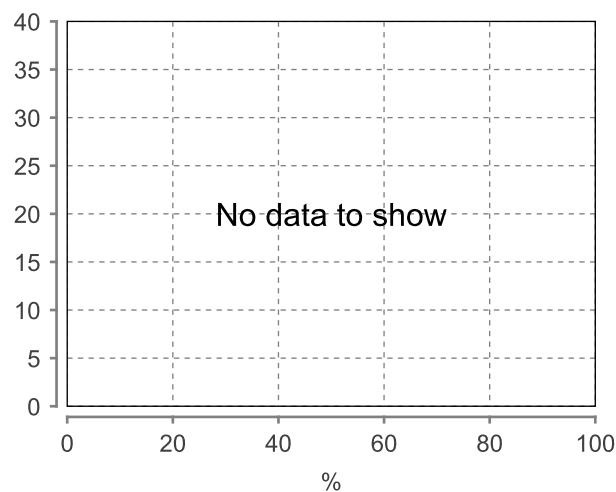
Paper: glossy coated



Dot Gain (CMY)



Dot Gain (K)



%	%	delta	%	delta	%	delta	%	delta
0%	0.0	0.0	0.0	0.0	0.0	0.0	0.0	0.0
10%	--	--	--	--	--	--	--	--
20%	--	--	--	--	--	--	--	--
25%	--	--	--	--	--	--	--	--
30%	--	--	--	--	--	--	--	--
40%	--	--	--	--	--	--	--	--
50%	--	--	--	--	--	--	--	--
60%	--	--	--	--	--	--	--	--
70%	--	--	--	--	--	--	--	--
75%	--	--	--	--	--	--	--	--
80%	--	--	--	--	--	--	--	--
90%	--	--	--	--	--	--	--	--
100%	0.0	0.0	0.0	0.0	0.0	0.0	0.0	0.0

CMY spread at 50%: -- %

	Density	dD
CYAN	--	--
MAGENTA	--	--
YELLOW	--	--
BLACK	--	--



Job number: Heidelberg Colortoolbox 10

Job name: IT8 7/4 R

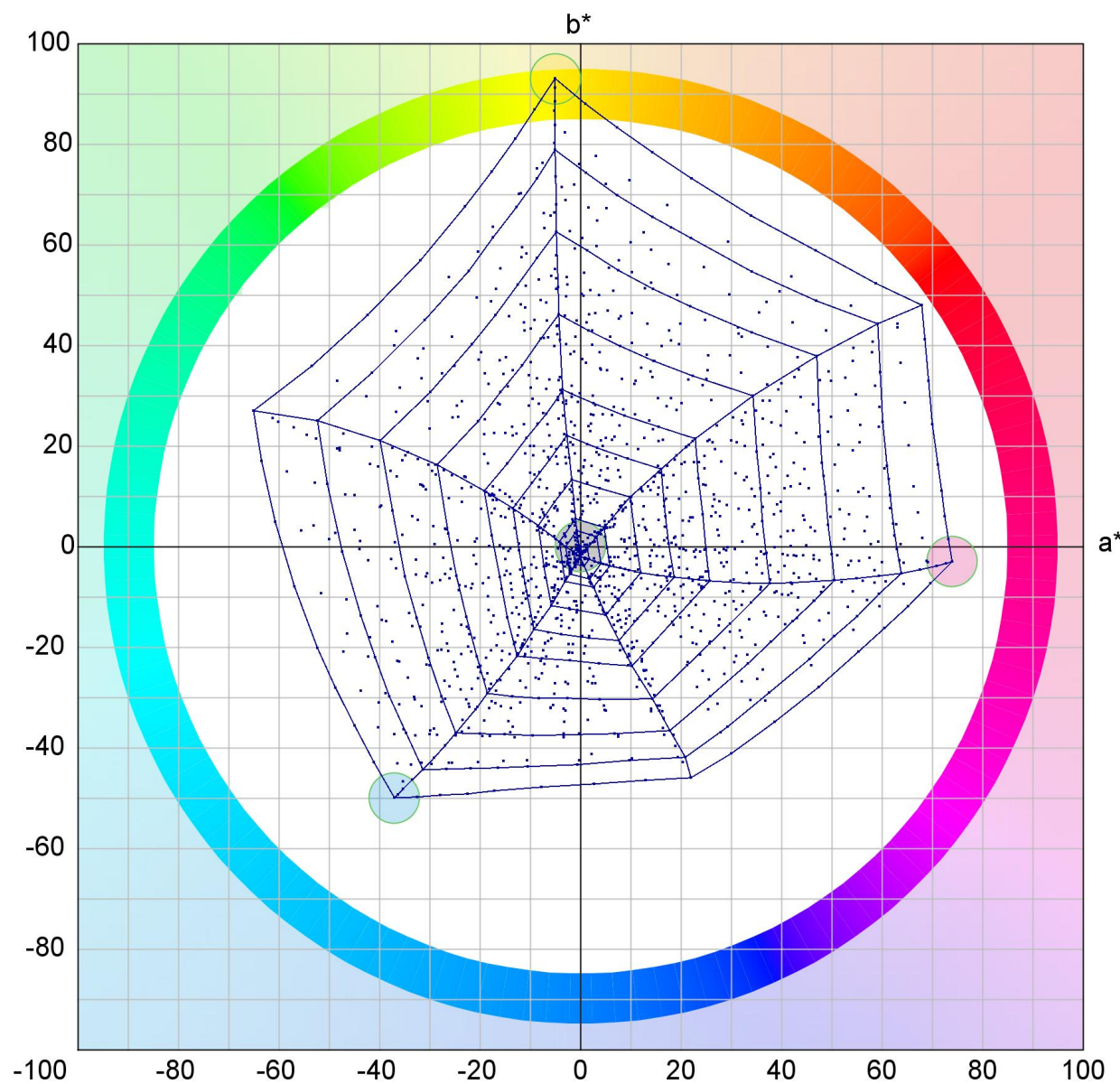
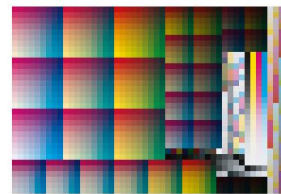
Sheet number: \_\_\_\_\_

Comment: \_\_\_\_\_

Measuremen FOGRA39L.txt

Standard: ISO 12647-2\_2007WB

Paper: glossy coated



Job number: Heidelberg Colortoolbox 10

Job name: IT8 7/4 R

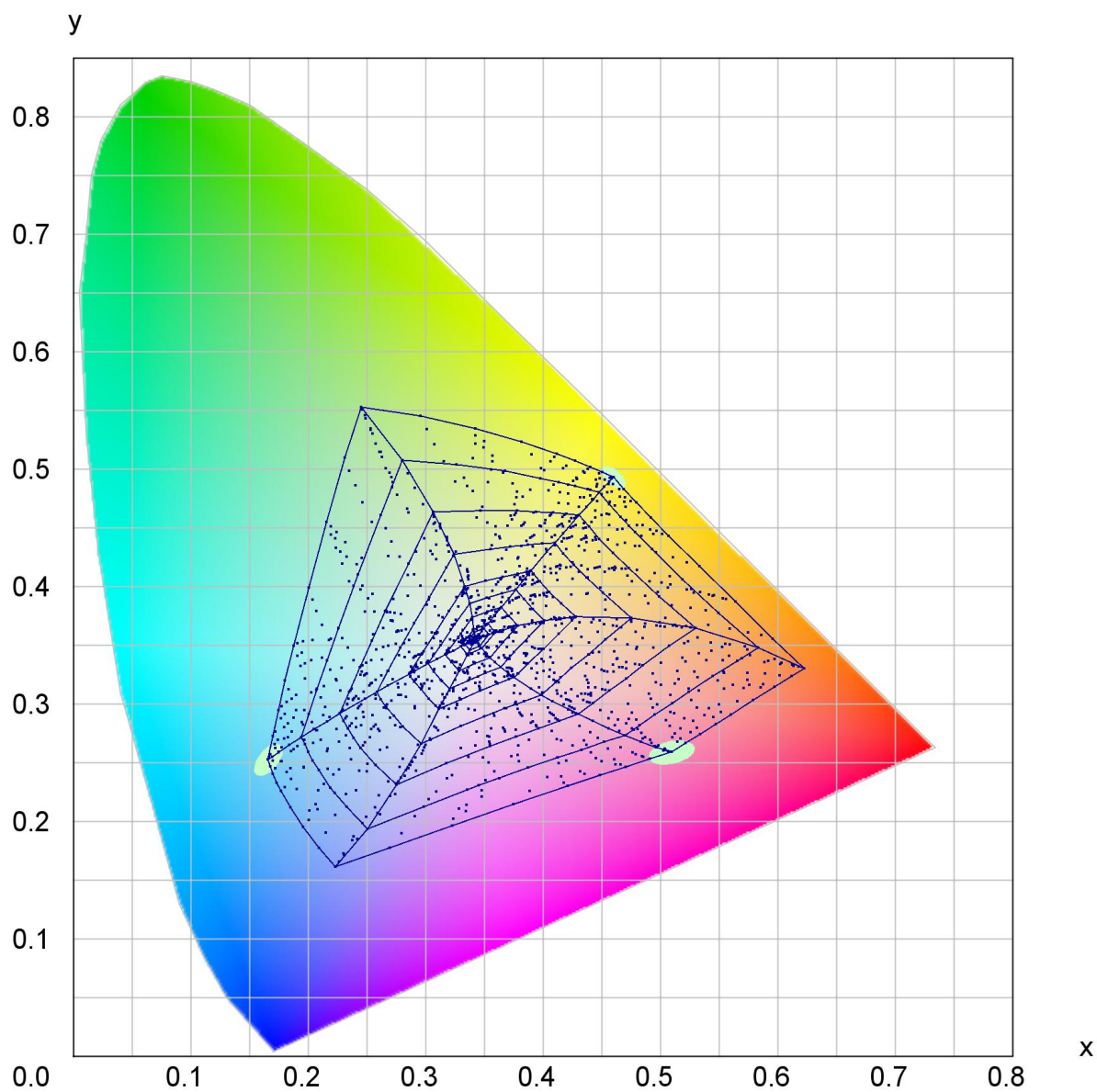
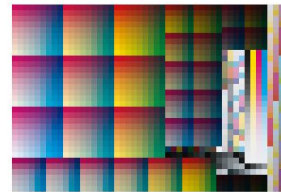
Sheet number: \_\_\_\_\_

Comment: \_\_\_\_\_

Measurement: FOGRA39L.txt

Standard: ISO 12647-2\_2007WB

Paper: glossy coated



Job number: Heidelberg Colortoolbox 10

Job name: IT8 7/4 R

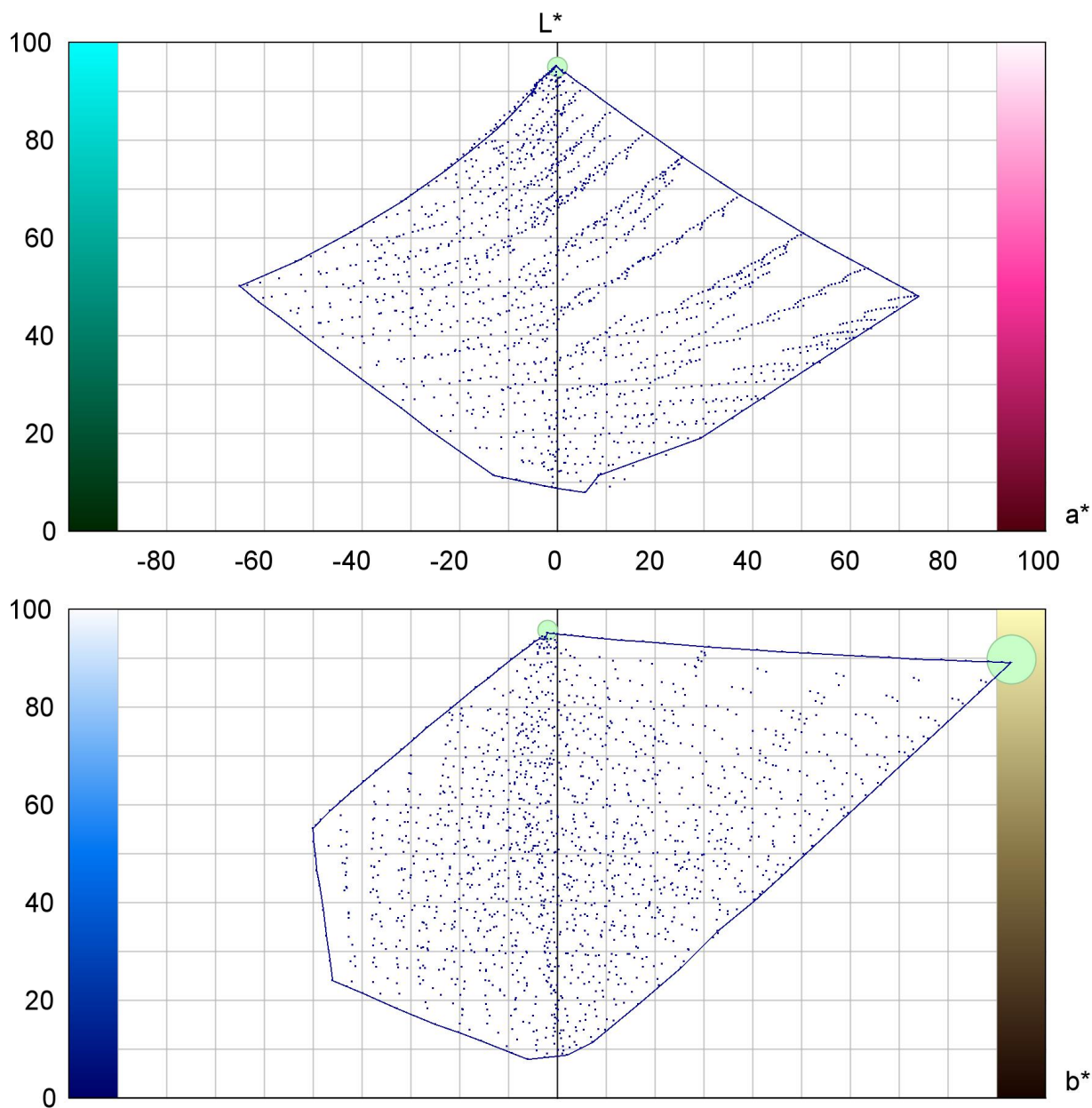
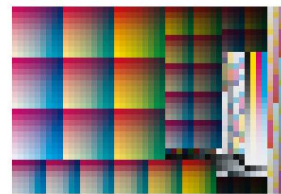
Sheet number: \_\_\_\_\_

Comment: \_\_\_\_\_

Measuremen FOGRA39L.txt

Standard: ISO 12647-2\_2007WB

Paper: glossy coated





Job number: Heidelberg Colortoolbox 10

Job name: IT8 7/4 R

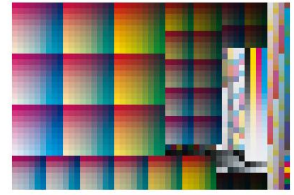
Sheet number: \_\_\_\_\_

Comment: \_\_\_\_\_

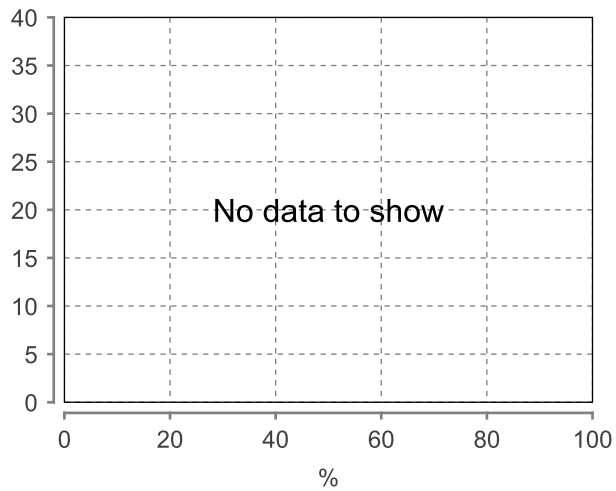
Measuremen FOGRA39L.txt

Standard: ISO 12647-2\_2007WB

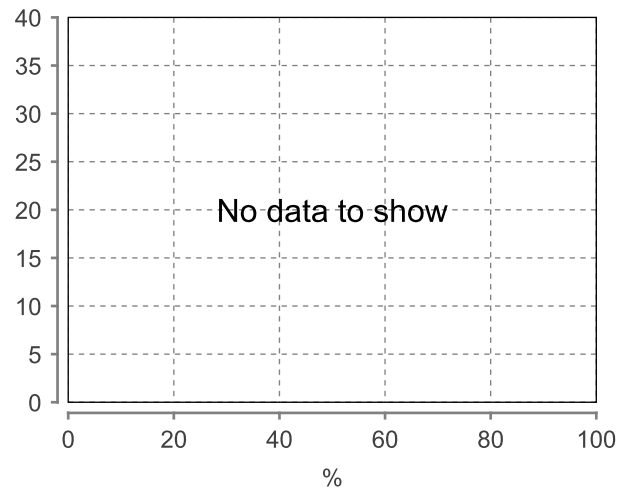
Paper: glossy coated



Dot Gain (CMY)



Dot Gain (K)



%	%	delta	%	delta	%	delta	%	delta
0%	0.0	0.0	0.0	0.0	0.0	0.0	0.0	0.0
2%	--	--	--	--	--	--	--	--
3%	--	--	--	--	--	--	--	--
5%	--	--	--	--	--	--	--	--
7%	--	--	--	--	--	--	--	--
10%	--	--	--	--	--	--	--	--
15%	--	--	--	--	--	--	--	--
20%	--	--	--	--	--	--	--	--
25%	--	--	--	--	--	--	--	--
30%	--	--	--	--	--	--	--	--
35%	--	--	--	--	--	--	--	--
40%	--	--	--	--	--	--	--	--
45%	--	--	--	--	--	--	--	--
50%	--	--	--	--	--	--	--	--
55%	--	--	--	--	--	--	--	--
60%	--	--	--	--	--	--	--	--
65%	--	--	--	--	--	--	--	--
70%	--	--	--	--	--	--	--	--
75%	--	--	--	--	--	--	--	--
80%	--	--	--	--	--	--	--	--
85%	--	--	--	--	--	--	--	--
90%	--	--	--	--	--	--	--	--
92%	--	--	--	--	--	--	--	--
93%	--	--	--	--	--	--	--	--
95%	--	--	--	--	--	--	--	--
97%	--	--	--	--	--	--	--	--
98%	--	--	--	--	--	--	--	--
100%	0.0	0.0	0.0	0.0	0.0	0.0	0.0	0.0

Job number: Heidelberg Colortoolbox 10

Job name: IT8 7/4 R

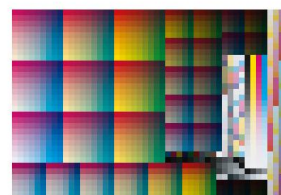
Sheet number: \_\_\_\_\_

Comment: \_\_\_\_\_

Measuremen FOGRA39L.txt

Standard: ISO 12647-2\_2007WB

Paper: glossy coated



Patch	CYAN	MAGENTA	YELLOW	BLACK	L	a	b
1	0.0	100.0	20.0	0.0	47.79	72.51	5.96
2	10.0	100.0	20.0	0.0	45.51	68.13	1.70
3	20.0	100.0	20.0	0.0	43.03	63.52	-2.80
4	30.0	100.0	20.0	0.0	40.51	58.64	-7.28
5	40.0	100.0	20.0	0.0	37.88	53.31	-12.04
6	55.0	100.0	20.0	0.0	34.00	44.67	-19.19
7	70.0	100.0	20.0	0.0	30.06	35.20	-26.37
8	85.0	100.0	20.0	0.0	26.62	25.47	-32.44
9	100.0	100.0	20.0	0.0	23.61	16.73	-37.53
10	0.0	100.0	55.0	0.0	47.53	70.11	24.29
11	10.0	100.0	55.0	0.0	45.21	65.42	20.06
12	20.0	100.0	55.0	0.0	42.70	60.57	15.52
13	30.0	100.0	55.0	0.0	40.13	55.41	10.83
14	40.0	100.0	55.0	0.0	37.39	49.85	5.84
15	55.0	100.0	55.0	0.0	33.52	40.28	-1.52
16	70.0	100.0	55.0	0.0	29.56	29.74	-8.98
17	85.0	100.0	55.0	0.0	25.95	18.62	-15.63
18	100.0	100.0	55.0	0.0	23.07	7.95	-20.64
19	0.0	100.0	100.0	0.0	47.00	68.00	47.98
20	10.0	100.0	100.0	0.0	44.60	63.20	43.50
21	20.0	100.0	100.0	0.0	42.06	58.11	38.60
22	30.0	100.0	100.0	0.0	39.39	52.75	33.49
23	40.0	100.0	100.0	0.0	36.86	46.42	28.21
24	55.0	100.0	100.0	0.0	32.88	36.37	20.22
25	70.0	100.0	100.0	0.0	29.01	24.54	12.24
26	85.0	100.0	100.0	0.0	25.62	12.47	5.36
27	100.0	100.0	100.0	0.0	23.00	-0.06	0.04
28	0.0	100.0	100.0	40.0	33.54	47.75	33.07
29	20.0	100.0	100.0	40.0	30.30	40.99	26.90
30	40.0	100.0	100.0	40.0	26.76	32.75	19.89
31	70.0	100.0	100.0	40.0	21.76	17.11	9.43
32	100.0	100.0	100.0	40.0	18.10	-0.99	1.79
33	0.0	100.0	100.0	60.0	26.56	36.33	25.40
34	20.0	100.0	100.0	60.0	24.16	31.22	20.70
35	40.0	100.0	100.0	60.0	21.51	24.79	15.44
36	70.0	100.0	100.0	60.0	17.92	12.62	7.96
37	100.0	100.0	100.0	60.0	15.38	-0.69	2.35
38	0.0	100.0	40.0	80.0	18.84	26.99	6.68
39	40.0	100.0	40.0	80.0	15.70	19.05	0.36
40	70.0	100.0	40.0	80.0	13.41	11.51	-4.65
41	100.0	100.0	40.0	80.0	11.82	4.05	-8.01
42	0.0	100.0	100.0	80.0	19.01	23.60	16.68
43	40.0	100.0	100.0	80.0	15.90	15.44	10.32
44	70.0	100.0	100.0	80.0	13.77	6.98	5.54
45	100.0	100.0	100.0	80.0	12.48	-1.07	2.71
46	0.0	0.0	0.0	10.0	88.97	0.00	-1.83
47	10.0	10.0	40.0	10.0	79.22	-1.24	22.15



Job number: Heidelberg Colortoolbox 10

Job name: IT8 7/4 R

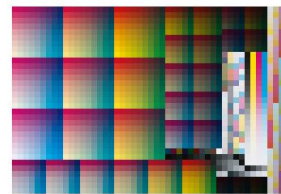
Sheet number: \_\_\_\_\_

Comment: \_\_\_\_\_

Measuremen FOGRA39L.txt

Standard: ISO 12647-2\_2007WB

Paper: glossy coated



Patch	CYAN	MAGENTA	YELLOW	BLACK	L	a	b
48	20.0	40.0	10.0	10.0	65.44	16.14	-8.12
49	40.0	70.0	70.0	10.0	44.52	24.69	17.95
50	0.0	85.0	20.0	0.0	53.15	62.23	4.51
51	10.0	85.0	20.0	0.0	50.68	57.88	0.47
52	20.0	85.0	20.0	0.0	48.21	53.35	-3.73
53	30.0	85.0	20.0	0.0	45.55	48.51	-8.07
54	40.0	85.0	20.0	0.0	42.90	43.23	-12.59
55	55.0	85.0	20.0	0.0	38.66	34.93	-19.61
56	70.0	85.0	20.0	0.0	34.58	25.65	-26.51
57	85.0	85.0	20.0	0.0	30.78	16.33	-32.81
58	100.0	85.0	20.0	0.0	27.57	7.64	-37.59
59	0.0	85.0	55.0	0.0	52.49	60.21	24.81
60	10.0	85.0	55.0	0.0	50.00	55.67	20.71
61	20.0	85.0	55.0	0.0	47.43	50.65	16.28
62	30.0	85.0	55.0	0.0	44.79	45.49	11.50
63	40.0	85.0	55.0	0.0	42.05	39.94	6.92
64	55.0	85.0	55.0	0.0	37.75	30.79	-0.52
65	70.0	85.0	55.0	0.0	33.71	20.10	-7.93
66	85.0	85.0	55.0	0.0	29.91	9.19	-14.34
67	100.0	85.0	55.0	0.0	26.73	-1.43	-19.48
68	0.0	85.0	100.0	0.0	51.44	58.81	52.31
69	10.0	85.0	100.0	0.0	48.91	53.87	47.79
70	20.0	85.0	100.0	0.0	46.31	48.96	42.92
71	30.0	85.0	100.0	0.0	43.73	43.29	37.62
72	40.0	85.0	100.0	0.0	40.86	37.23	32.16
73	55.0	85.0	100.0	0.0	36.80	27.21	24.05
74	70.0	85.0	100.0	0.0	32.85	15.47	15.98
75	85.0	85.0	100.0	0.0	29.11	3.37	8.69
76	100.0	85.0	100.0	0.0	26.04	-8.55	3.14
77	0.0	70.0	100.0	40.0	41.52	32.12	41.68
78	20.0	70.0	100.0	40.0	38.11	25.43	35.03
79	40.0	70.0	100.0	40.0	34.29	17.27	27.79
80	70.0	70.0	100.0	40.0	28.56	2.23	15.93
81	100.0	70.0	100.0	40.0	23.24	-14.89	5.72
82	0.0	70.0	100.0	60.0	32.74	24.34	32.05
83	20.0	70.0	100.0	60.0	30.21	19.19	27.08
84	40.0	70.0	100.0	60.0	27.35	12.80	21.58
85	70.0	70.0	100.0	60.0	23.07	1.46	12.64
86	100.0	70.0	100.0	60.0	19.01	-11.29	4.90
87	0.0	70.0	40.0	80.0	23.51	17.89	6.69
88	40.0	70.0	40.0	80.0	19.80	10.76	0.39
89	70.0	70.0	40.0	80.0	16.70	4.02	-4.87
90	100.0	70.0	40.0	80.0	13.94	-2.61	-9.10
91	0.0	70.0	100.0	80.0	22.93	15.62	20.88
92	40.0	70.0	100.0	80.0	19.27	8.00	13.82
93	70.0	70.0	100.0	80.0	16.55	0.42	8.14
94	100.0	70.0	100.0	80.0	14.34	-7.10	3.91

Job number: Heidelberg Colortoolbox 10

Job name: IT8 7/4 R

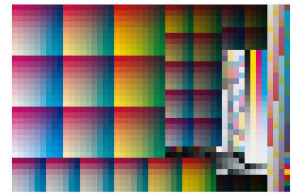
Sheet number: \_\_\_\_\_

Comment: \_\_\_\_\_

Measuremen FOGRA39L.txt

Standard: ISO 12647-2\_2007WB

Paper: glossy coated



Patch	CYAN	MAGENTA	YELLOW	BLACK	L	a	b
95	0.0	0.0	10.0	10.0	88.27	-0.97	4.79
96	10.0	10.0	70.0	10.0	77.36	-2.81	49.69
97	20.0	40.0	20.0	10.0	64.88	15.23	-1.92
98	70.0	0.0	0.0	10.0	62.59	-23.41	-34.47
99	0.0	70.0	20.0	0.0	60.26	49.36	4.28
100	10.0	70.0	20.0	0.0	57.61	44.98	0.21
101	20.0	70.0	20.0	0.0	54.83	40.71	-3.94
102	30.0	70.0	20.0	0.0	52.11	35.95	-8.14
103	40.0	70.0	20.0	0.0	49.20	31.09	-12.50
104	55.0	70.0	20.0	0.0	44.73	23.09	-19.44
105	70.0	70.0	20.0	0.0	40.26	14.33	-26.41
106	85.0	70.0	20.0	0.0	36.10	5.14	-32.67
107	100.0	70.0	20.0	0.0	32.44	-3.22	-37.28
108	0.0	70.0	55.0	0.0	59.04	47.46	26.93
109	10.0	70.0	55.0	0.0	56.43	43.02	22.58
110	20.0	70.0	55.0	0.0	53.68	38.45	18.37
111	30.0	70.0	55.0	0.0	50.90	33.14	13.77
112	40.0	70.0	55.0	0.0	47.94	27.72	8.92
113	55.0	70.0	55.0	0.0	43.46	18.74	1.71
114	70.0	70.0	55.0	0.0	39.05	8.46	-5.67
115	85.0	70.0	55.0	0.0	34.98	-2.13	-12.34
116	100.0	70.0	55.0	0.0	31.28	-12.37	-17.66
117	0.0	70.0	100.0	0.0	57.58	46.84	58.81
118	10.0	70.0	100.0	0.0	54.82	42.01	53.65
119	20.0	70.0	100.0	0.0	52.15	37.07	48.63
120	30.0	70.0	100.0	0.0	49.35	31.39	43.46
121	40.0	70.0	100.0	0.0	46.31	25.55	37.95
122	55.0	70.0	100.0	0.0	42.11	15.48	29.46
123	70.0	70.0	100.0	0.0	37.82	4.16	20.99
124	85.0	70.0	100.0	0.0	33.88	-7.91	13.32
125	100.0	70.0	100.0	0.0	30.59	-19.75	7.41
126	0.0	40.0	100.0	40.0	51.50	14.09	52.40
127	20.0	40.0	100.0	40.0	47.51	7.72	45.29
128	40.0	40.0	100.0	40.0	43.15	0.43	37.24
129	70.0	40.0	100.0	40.0	35.98	-13.52	23.74
130	100.0	40.0	100.0	40.0	29.26	-30.65	11.34
131	0.0	40.0	100.0	60.0	40.43	10.31	40.39
132	20.0	40.0	100.0	60.0	37.43	5.41	35.02
133	40.0	40.0	100.0	60.0	34.13	-0.38	28.74
134	70.0	40.0	100.0	60.0	28.69	-10.91	18.42
135	100.0	40.0	100.0	60.0	23.47	-23.55	8.86
136	0.0	40.0	40.0	80.0	28.90	8.27	8.07
137	40.0	40.0	40.0	80.0	24.51	1.58	1.66
138	70.0	40.0	40.0	80.0	20.60	-4.79	-4.17
139	100.0	40.0	40.0	80.0	16.70	-11.32	-9.28
140	0.0	40.0	100.0	80.0	27.82	6.36	26.06
141	40.0	40.0	100.0	80.0	23.57	-1.02	18.48

Job number: Heidelberg Colortoolbox 10

Job name: IT8 7/4 R

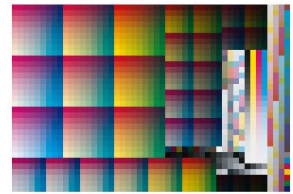
Sheet number: \_\_\_\_\_

Comment: \_\_\_\_\_

Measuremen FOGRA39L.txt

Standard: ISO 12647-2\_2007WB

Paper: glossy coated



Patch	CYAN	MAGENTA	YELLOW	BLACK	L	a	b
142	70.0	40.0	100.0	80.0	20.04	-8.17	11.75
143	100.0	40.0	100.0	80.0	16.99	-15.73	5.98
144	0.0	0.0	20.0	10.0	87.56	-1.66	12.07
145	10.0	20.0	0.0	10.0	77.72	7.71	-8.73
146	20.0	40.0	40.0	10.0	63.88	13.53	11.93
147	70.0	0.0	10.0	10.0	61.98	-25.94	-27.88
148	0.0	55.0	20.0	0.0	67.74	36.20	5.00
149	10.0	55.0	20.0	0.0	65.00	32.26	0.88
150	20.0	55.0	20.0	0.0	61.99	28.12	-3.21
151	30.0	55.0	20.0	0.0	59.03	23.67	-7.58
152	40.0	55.0	20.0	0.0	55.93	18.77	-11.94
153	55.0	55.0	20.0	0.0	51.05	11.30	-18.81
154	70.0	55.0	20.0	0.0	46.16	2.69	-25.83
155	85.0	55.0	20.0	0.0	41.53	-5.85	-32.18
156	100.0	55.0	20.0	0.0	37.43	-13.95	-37.00
157	0.0	55.0	55.0	0.0	66.18	34.43	29.91
158	10.0	55.0	55.0	0.0	63.36	30.37	25.64
159	20.0	55.0	55.0	0.0	60.37	25.77	21.17
160	30.0	55.0	55.0	0.0	57.44	20.76	16.71
161	40.0	55.0	55.0	0.0	54.23	15.57	11.73
162	55.0	55.0	55.0	0.0	49.44	6.85	4.42
163	70.0	55.0	55.0	0.0	44.70	-3.11	-3.19
164	85.0	55.0	55.0	0.0	40.01	-13.38	-10.21
165	100.0	55.0	55.0	0.0	36.10	-23.61	-15.58
166	0.0	55.0	100.0	0.0	64.26	34.04	65.76
167	10.0	55.0	100.0	0.0	61.53	29.47	60.57
168	20.0	55.0	100.0	0.0	58.63	24.60	55.45
169	30.0	55.0	100.0	0.0	55.60	19.28	49.99
170	40.0	55.0	100.0	0.0	52.38	13.42	44.30
171	55.0	55.0	100.0	0.0	47.65	3.97	35.33
172	70.0	55.0	100.0	0.0	43.03	-7.34	26.50
173	85.0	55.0	100.0	0.0	38.64	-19.08	18.31
174	100.0	55.0	100.0	0.0	35.06	-31.19	11.86
175	0.0	20.0	100.0	40.0	58.14	3.28	59.64
176	20.0	20.0	100.0	40.0	53.61	-2.50	52.04
177	40.0	20.0	100.0	40.0	48.60	-9.77	43.26
178	70.0	20.0	100.0	40.0	40.70	-23.46	28.82
179	100.0	20.0	100.0	40.0	33.37	-40.15	15.84
180	0.0	20.0	100.0	60.0	45.52	1.73	46.06
181	20.0	20.0	100.0	60.0	42.11	-2.79	40.17
182	40.0	20.0	100.0	60.0	38.31	-8.53	33.43
183	70.0	20.0	100.0	60.0	32.30	-19.05	22.29
184	100.0	20.0	100.0	60.0	26.65	-31.44	12.20
185	0.0	0.0	40.0	80.0	35.24	-2.07	11.29
186	40.0	0.0	40.0	80.0	29.96	-8.48	4.02
187	70.0	0.0	40.0	80.0	25.11	-14.85	-2.53
188	100.0	0.0	40.0	80.0	20.36	-21.68	-8.30

Job number: Heidelberg Colortoolbox 10

Job name: IT8 7/4 R

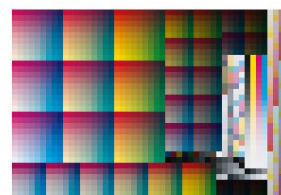
Sheet number: \_\_\_\_\_

Comment: \_\_\_\_\_

Measuremen FOGRA39L.txt

Standard: ISO 12647-2\_2007WB

Paper: glossy coated



Patch	CYAN	MAGENTA	YELLOW	BLACK	L	a	b
189	0.0	0.0	100.0	80.0	34.02	-4.30	32.97
190	40.0	0.0	100.0	80.0	28.85	-11.19	24.28
191	70.0	0.0	100.0	80.0	24.45	-18.32	16.46
192	100.0	0.0	100.0	80.0	20.60	-26.09	9.59
193	0.0	0.0	40.0	10.0	86.14	-3.43	28.60
194	10.0	20.0	10.0	10.0	77.13	6.81	-2.17
195	20.0	40.0	70.0	10.0	62.23	12.16	35.45
196	70.0	0.0	20.0	10.0	61.33	-28.36	-20.67
197	0.0	40.0	20.0	0.0	75.28	24.35	6.42
198	10.0	40.0	20.0	0.0	72.25	20.46	2.22
199	20.0	40.0	20.0	0.0	69.14	16.46	-1.98
200	30.0	40.0	20.0	0.0	66.04	12.14	-6.31
201	40.0	40.0	20.0	0.0	62.69	7.70	-10.82
202	55.0	40.0	20.0	0.0	57.30	0.40	-17.81
203	70.0	40.0	20.0	0.0	51.87	-7.58	-25.20
204	85.0	40.0	20.0	0.0	46.78	-15.73	-31.74
205	100.0	40.0	20.0	0.0	42.17	-23.50	-36.82
206	0.0	40.0	55.0	0.0	73.34	22.35	33.94
207	10.0	40.0	55.0	0.0	70.39	18.14	29.44
208	20.0	40.0	55.0	0.0	67.28	13.80	25.06
209	30.0	40.0	55.0	0.0	64.04	9.31	20.27
210	40.0	40.0	55.0	0.0	60.55	4.19	15.13
211	55.0	40.0	55.0	0.0	55.42	-4.51	7.41
212	70.0	40.0	55.0	0.0	50.07	-13.93	-0.47
213	85.0	40.0	55.0	0.0	45.08	-23.99	-7.68
214	100.0	40.0	55.0	0.0	40.77	-34.04	-13.29
215	0.0	40.0	100.0	0.0	71.24	22.15	73.09
216	10.0	40.0	100.0	0.0	68.22	17.38	67.82
217	20.0	40.0	100.0	0.0	65.08	12.67	62.47
218	30.0	40.0	100.0	0.0	61.83	7.70	56.80
219	40.0	40.0	100.0	0.0	58.56	2.08	50.91
220	55.0	40.0	100.0	0.0	53.34	-7.16	41.47
221	70.0	40.0	100.0	0.0	48.29	-18.17	32.23
222	85.0	40.0	100.0	0.0	43.55	-29.96	23.45
223	100.0	40.0	100.0	0.0	39.45	-41.74	16.37
224	0.0	0.0	100.0	40.0	63.89	-5.15	66.38
225	20.0	0.0	100.0	40.0	58.89	-10.62	58.26
226	40.0	0.0	100.0	40.0	53.48	-17.70	48.74
227	70.0	0.0	100.0	40.0	44.73	-31.49	33.40
228	100.0	0.0	100.0	40.0	36.84	-47.86	19.54
229	0.0	0.0	100.0	60.0	49.86	-4.72	51.12
230	20.0	0.0	100.0	60.0	46.10	-9.06	44.97
231	40.0	0.0	100.0	60.0	42.00	-14.69	37.65
232	70.0	0.0	100.0	60.0	35.34	-25.39	25.68
233	100.0	0.0	100.0	60.0	29.31	-37.70	14.95
234	0.0	100.0	0.0	80.0	18.89	29.38	-0.23
235	40.0	100.0	0.0	80.0	15.49	22.41	-6.87

Job number: Heidelberg Colortoolbox 10

Job name: IT8 7/4 R

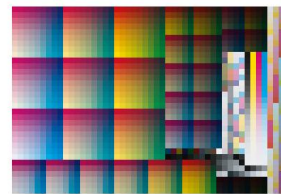
Sheet number: \_\_\_\_\_

Comment: \_\_\_\_\_

Measuremen FOGRA39L.txt

Standard: ISO 12647-2\_2007WB

Paper: glossy coated



Patch	CYAN	MAGENTA	YELLOW	BLACK	L	a	b
236	70.0	100.0	0.0	80.0	13.17	15.65	-11.89
237	100.0	100.0	0.0	80.0	11.55	9.04	-15.42
238	0.0	100.0	70.0	80.0	18.89	25.00	12.16
239	40.0	100.0	70.0	80.0	15.85	16.95	5.96
240	70.0	100.0	70.0	80.0	13.65	8.89	0.98
241	100.0	100.0	70.0	80.0	12.16	0.91	-2.23
242	0.0	0.0	70.0	10.0	84.32	-4.73	57.81
243	10.0	20.0	20.0	10.0	76.55	5.75	4.89
244	20.0	70.0	0.0	10.0	52.06	39.42	-13.99
245	70.0	0.0	40.0	10.0	60.07	-32.65	-5.62
246	0.0	30.0	20.0	0.0	80.22	16.78	7.95
247	10.0	30.0	20.0	0.0	77.18	12.93	3.73
248	20.0	30.0	20.0	0.0	73.93	9.26	-0.45
249	30.0	30.0	20.0	0.0	70.53	5.34	-5.01
250	40.0	30.0	20.0	0.0	66.90	1.03	-9.84
251	55.0	30.0	20.0	0.0	61.42	-6.31	-17.06
252	70.0	30.0	20.0	0.0	55.76	-14.16	-24.37
253	85.0	30.0	20.0	0.0	50.23	-22.11	-31.35
254	100.0	30.0	20.0	0.0	45.41	-29.80	-36.58
255	0.0	30.0	55.0	0.0	78.27	14.67	36.81
256	10.0	30.0	55.0	0.0	75.03	10.79	32.32
257	20.0	30.0	55.0	0.0	71.79	6.67	27.76
258	30.0	30.0	55.0	0.0	68.42	2.01	22.90
259	40.0	30.0	55.0	0.0	64.84	-2.94	17.76
260	55.0	30.0	55.0	0.0	59.26	-11.19	9.59
261	70.0	30.0	55.0	0.0	53.69	-20.61	1.50
262	85.0	30.0	55.0	0.0	48.41	-30.73	-5.97
263	100.0	30.0	55.0	0.0	43.65	-40.33	-11.93
264	0.0	30.0	100.0	0.0	76.07	14.37	78.29
265	10.0	30.0	100.0	0.0	72.79	9.82	72.80
266	20.0	30.0	100.0	0.0	69.51	5.28	67.24
267	30.0	30.0	100.0	0.0	66.12	0.45	61.34
268	40.0	30.0	100.0	0.0	62.51	-4.94	55.11
269	55.0	30.0	100.0	0.0	57.27	-14.13	45.68
270	70.0	30.0	100.0	0.0	51.79	-25.04	35.84
271	85.0	30.0	100.0	0.0	46.71	-36.65	26.74
272	100.0	30.0	100.0	0.0	42.40	-48.33	19.40
273	0.0	100.0	70.0	40.0	33.84	49.29	22.76
274	20.0	100.0	70.0	40.0	30.57	42.58	16.64
275	40.0	100.0	70.0	40.0	26.99	34.76	9.92
276	70.0	100.0	70.0	40.0	21.91	19.77	-0.45
277	100.0	100.0	70.0	40.0	18.10	2.77	-8.26
278	0.0	100.0	70.0	60.0	26.68	37.87	17.70
279	20.0	100.0	70.0	60.0	24.29	32.61	13.17
280	40.0	100.0	70.0	60.0	21.65	26.37	8.02
281	70.0	100.0	70.0	60.0	17.96	14.78	0.30
282	100.0	100.0	70.0	60.0	15.22	2.34	-5.55

Job number: Heidelberg Colortoolbox 10

Job name: IT8 7/4 R

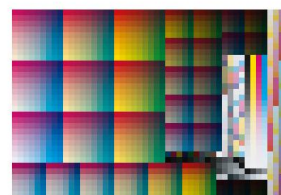
Sheet number: \_\_\_\_\_

Comment: \_\_\_\_\_

Measuremen FOGRA39L.txt

Standard: ISO 12647-2\_2007WB

Paper: glossy coated



Patch	CYAN	MAGENTA	YELLOW	BLACK	L	a	b
283	0.0	70.0	0.0	80.0	23.87	19.68	-2.12
284	40.0	70.0	0.0	80.0	19.88	13.37	-8.47
285	70.0	70.0	0.0	80.0	16.65	7.65	-13.65
286	100.0	70.0	0.0	80.0	13.83	1.83	-17.79
287	0.0	70.0	70.0	80.0	23.20	16.60	14.09
288	40.0	70.0	70.0	80.0	19.60	9.06	7.76
289	70.0	70.0	70.0	80.0	16.65	1.93	2.23
290	100.0	70.0	70.0	80.0	14.17	-5.52	-2.04
291	0.0	10.0	0.0	10.0	84.96	5.25	-3.64
292	10.0	20.0	40.0	10.0	75.30	4.45	19.97
293	20.0	70.0	10.0	10.0	51.80	38.65	-9.15
294	70.0	0.0	70.0	10.0	58.30	-37.28	19.51
295	0.0	20.0	20.0	0.0	85.00	9.99	9.80
296	10.0	20.0	20.0	0.0	81.63	6.38	5.40
297	20.0	20.0	20.0	0.0	78.15	2.87	0.96
298	30.0	20.0	20.0	0.0	74.65	-0.92	-3.66
299	40.0	20.0	20.0	0.0	70.85	-5.18	-8.81
300	55.0	20.0	20.0	0.0	65.04	-12.14	-16.13
301	70.0	20.0	20.0	0.0	59.09	-19.79	-23.83
302	85.0	20.0	20.0	0.0	53.42	-27.64	-30.87
303	100.0	20.0	20.0	0.0	48.35	-35.16	-36.30
304	0.0	20.0	55.0	0.0	82.83	8.00	39.85
305	10.0	20.0	55.0	0.0	79.37	4.12	35.12
306	20.0	20.0	55.0	0.0	75.98	-0.10	30.43
307	30.0	20.0	55.0	0.0	72.41	-4.26	25.39
308	40.0	20.0	55.0	0.0	68.60	-9.17	19.97
309	55.0	20.0	55.0	0.0	62.83	-17.37	11.88
310	70.0	20.0	55.0	0.0	56.91	-26.72	3.43
311	85.0	20.0	55.0	0.0	51.38	-36.58	-4.35
312	100.0	20.0	55.0	0.0	46.42	-46.43	-10.57
313	0.0	20.0	100.0	0.0	80.54	7.39	83.21
314	10.0	20.0	100.0	0.0	77.04	3.19	77.55
315	20.0	20.0	100.0	0.0	73.73	-1.23	71.93
316	30.0	20.0	100.0	0.0	70.11	-5.89	65.73
317	40.0	20.0	100.0	0.0	66.36	-11.51	59.41
318	55.0	20.0	100.0	0.0	60.74	-20.50	49.48
319	70.0	20.0	100.0	0.0	54.98	-31.13	39.32
320	85.0	20.0	100.0	0.0	49.53	-42.57	29.84
321	100.0	20.0	100.0	0.0	45.00	-54.44	22.11
322	0.0	70.0	70.0	40.0	42.38	32.88	26.66
323	20.0	70.0	70.0	40.0	38.86	26.31	20.71
324	40.0	70.0	70.0	40.0	35.02	18.54	14.09
325	70.0	70.0	70.0	40.0	28.93	4.26	3.29
326	100.0	70.0	70.0	40.0	23.37	-11.40	-6.00
327	0.0	70.0	70.0	60.0	33.39	25.34	20.88
328	20.0	70.0	70.0	60.0	30.76	20.19	16.34
329	40.0	70.0	70.0	60.0	27.85	13.98	11.16

Job number: Heidelberg Colortoolbox 10

Job name: IT8 7/4 R

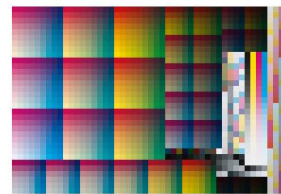
Sheet number: \_\_\_\_\_

Comment: \_\_\_\_\_

Measuremen FOGRA39L.txt

Standard: ISO 12647-2\_2007WB

Paper: glossy coated



Patch	CYAN	MAGENTA	YELLOW	BLACK	L	a	b
330	70.0	70.0	70.0	60.0	23.27	2.95	2.88
331	100.0	70.0	70.0	60.0	19.01	-8.68	-4.30
332	0.0	40.0	0.0	80.0	29.76	9.93	-2.48
333	40.0	40.0	0.0	80.0	25.04	3.90	-8.97
334	70.0	40.0	0.0	80.0	20.83	-1.48	-14.58
335	100.0	40.0	0.0	80.0	16.84	-7.00	-19.33
336	0.0	40.0	70.0	80.0	28.33	7.07	17.51
337	40.0	40.0	70.0	80.0	24.03	0.10	10.57
338	70.0	40.0	70.0	80.0	20.28	-6.84	4.29
339	100.0	40.0	70.0	80.0	16.84	-14.31	-0.96
340	0.0	10.0	10.0	10.0	84.32	4.18	3.22
341	10.0	20.0	70.0	10.0	73.49	3.03	46.38
342	20.0	70.0	20.0	10.0	51.45	37.87	-3.76
343	70.0	10.0	0.0	10.0	59.77	-19.05	-34.62
344	0.0	10.0	20.0	0.0	89.36	3.85	11.50
345	10.0	10.0	20.0	0.0	85.83	0.49	6.99
346	20.0	10.0	20.0	0.0	82.21	-3.11	2.52
347	30.0	10.0	20.0	0.0	78.65	-6.77	-2.35
348	40.0	10.0	20.0	0.0	74.78	-10.87	-7.30
349	55.0	10.0	20.0	0.0	68.68	-17.67	-15.17
350	70.0	10.0	20.0	0.0	62.36	-25.06	-22.97
351	85.0	10.0	20.0	0.0	56.35	-32.91	-30.39
352	100.0	10.0	20.0	0.0	51.04	-40.15	-35.95
353	0.0	10.0	55.0	0.0	87.07	1.64	42.88
354	10.0	10.0	55.0	0.0	83.59	-1.97	38.20
355	20.0	10.0	55.0	0.0	80.02	-6.07	33.11
356	30.0	10.0	55.0	0.0	76.24	-10.21	28.00
357	40.0	10.0	55.0	0.0	72.32	-14.86	22.53
358	55.0	10.0	55.0	0.0	66.29	-23.00	13.92
359	70.0	10.0	55.0	0.0	60.16	-32.25	5.30
360	85.0	10.0	55.0	0.0	54.24	-42.16	-2.78
361	100.0	10.0	55.0	0.0	48.97	-51.49	-9.30
362	0.0	10.0	100.0	0.0	84.88	1.06	87.98
363	10.0	10.0	100.0	0.0	81.32	-3.08	82.33
364	20.0	10.0	100.0	0.0	77.66	-7.42	76.23
365	30.0	10.0	100.0	0.0	73.94	-12.11	70.00
366	40.0	10.0	100.0	0.0	70.01	-17.34	63.55
367	55.0	10.0	100.0	0.0	64.14	-26.16	53.46
368	70.0	10.0	100.0	0.0	57.99	-36.64	42.81
369	85.0	10.0	100.0	0.0	52.40	-48.27	32.90
370	100.0	10.0	100.0	0.0	47.51	-60.02	24.70
371	0.0	40.0	70.0	40.0	52.73	14.42	33.70
372	20.0	40.0	70.0	40.0	48.59	8.58	27.24
373	40.0	40.0	70.0	40.0	44.13	1.40	20.25
374	70.0	40.0	70.0	40.0	36.61	-11.74	8.22
375	100.0	40.0	70.0	40.0	29.51	-27.23	-2.32
376	0.0	40.0	70.0	60.0	41.39	10.90	26.21



Job number: Heidelberg Colortoolbox 10

Job name: IT8 7/4 R

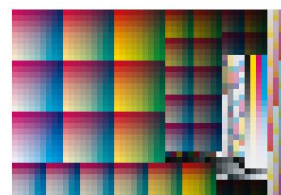
Sheet number: \_\_\_\_\_

Comment: \_\_\_\_\_

Measuremen FOGRA39L.txt

Standard: ISO 12647-2\_2007WB

Paper: glossy coated



Patch	CYAN	MAGENTA	YELLOW	BLACK	L	a	b
377	20.0	40.0	70.0	60.0	38.25	6.35	21.23
378	40.0	40.0	70.0	60.0	34.84	0.64	15.85
379	70.0	40.0	70.0	60.0	29.08	-9.50	6.48
380	100.0	40.0	70.0	60.0	23.57	-21.21	-1.85
381	0.0	0.0	0.0	80.0	36.61	0.03	-0.51
382	40.0	0.0	0.0	80.0	30.95	-5.67	-8.17
383	70.0	0.0	0.0	80.0	25.83	-11.06	-14.39
384	100.0	0.0	0.0	80.0	20.90	-16.61	-19.66
385	0.0	0.0	70.0	80.0	34.44	-3.21	22.29
386	40.0	0.0	70.0	80.0	29.29	-10.00	14.59
387	70.0	0.0	70.0	80.0	24.67	-17.00	7.53
388	100.0	0.0	70.0	80.0	20.32	-24.42	1.20
389	0.0	10.0	20.0	10.0	83.69	3.32	10.47
390	10.0	40.0	0.0	10.0	68.82	20.43	-10.27
391	20.0	70.0	40.0	10.0	50.78	36.41	7.79
392	70.0	10.0	10.0	10.0	59.20	-21.49	-28.33
393	0.0	0.0	20.0	0.0	93.62	-1.63	13.29
394	10.0	0.0	20.0	0.0	90.01	-5.13	8.82
395	20.0	0.0	20.0	0.0	86.34	-8.38	4.20
396	30.0	0.0	20.0	0.0	82.55	-12.14	-0.78
397	40.0	0.0	20.0	0.0	78.36	-15.99	-6.09
398	55.0	0.0	20.0	0.0	72.03	-22.65	-13.99
399	70.0	0.0	20.0	0.0	65.46	-30.14	-22.15
400	85.0	0.0	20.0	0.0	59.26	-37.95	-29.77
401	100.0	0.0	20.0	0.0	53.58	-44.91	-35.68
402	0.0	0.0	55.0	0.0	91.23	-4.27	46.13
403	10.0	0.0	55.0	0.0	87.70	-7.87	41.24
404	20.0	0.0	55.0	0.0	83.93	-11.51	35.97
405	30.0	0.0	55.0	0.0	80.07	-15.84	30.68
406	40.0	0.0	55.0	0.0	75.93	-20.32	24.89
407	55.0	0.0	55.0	0.0	69.67	-28.43	16.27
408	70.0	0.0	55.0	0.0	63.05	-37.41	7.09
409	85.0	0.0	55.0	0.0	56.90	-47.30	-1.03
410	100.0	0.0	55.0	0.0	51.53	-56.87	-7.93
411	0.0	0.0	100.0	0.0	89.00	-4.98	92.99
412	10.0	0.0	100.0	0.0	85.31	-9.06	86.88
413	20.0	0.0	100.0	0.0	81.54	-12.92	81.01
414	30.0	0.0	100.0	0.0	77.72	-17.64	74.55
415	40.0	0.0	100.0	0.0	73.66	-22.84	67.60
416	55.0	0.0	100.0	0.0	67.35	-31.80	56.89
417	70.0	0.0	100.0	0.0	61.00	-42.23	46.03
418	85.0	0.0	100.0	0.0	55.06	-53.38	35.92
419	100.0	0.0	100.0	0.0	50.00	-64.97	27.02
420	0.0	20.0	70.0	40.0	59.30	3.93	38.60
421	20.0	20.0	70.0	40.0	54.74	-1.63	31.93
422	40.0	20.0	70.0	40.0	49.73	-8.43	24.33
423	70.0	20.0	70.0	40.0	41.50	-21.63	11.77

Job number: Heidelberg Colortoolbox 10

Job name: IT8 7/4 R

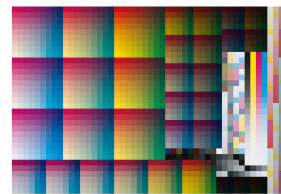
Sheet number: \_\_\_\_\_

Comment: \_\_\_\_\_

Measuremen FOGRA39L.txt

Standard: ISO 12647-2\_2007WB

Paper: glossy coated



Patch	CYAN	MAGENTA	YELLOW	BLACK	L	a	b
424	100.0	20.0	70.0	40.0	33.75	-36.87	0.76
425	0.0	20.0	70.0	60.0	46.43	2.53	29.88
426	20.0	20.0	70.0	60.0	42.99	-1.81	24.81
427	40.0	20.0	70.0	60.0	39.17	-7.21	18.95
428	70.0	20.0	70.0	60.0	32.83	-17.31	9.20
429	100.0	20.0	70.0	60.0	26.76	-29.01	0.44
430	3.0	40.0	3.0	40.0	55.04	17.02	-4.88
431	0.0	3.0	40.0	3.0	89.21	-1.71	29.65
432	0.0	3.0	0.0	3.0	91.99	1.60	-2.55
433	3.0	3.0	0.0	0.0	92.70	0.79	-3.88
434	0.0	0.0	0.0	100.0	16.00	-0.11	0.03
435	0.0	0.0	100.0	0.0	89.00	-4.98	92.99
436	0.0	100.0	0.0	0.0	47.99	74.01	-2.98
437	100.0	0.0	0.0	0.0	55.00	-37.00	-49.98
438	0.0	10.0	40.0	10.0	82.31	2.13	26.29
439	10.0	40.0	10.0	10.0	68.26	19.66	-4.31
440	20.0	70.0	70.0	10.0	49.79	34.97	26.95
441	70.0	10.0	20.0	10.0	58.54	-23.69	-21.40
442	0.0	100.0	10.0	0.0	47.89	73.32	1.40
443	10.0	100.0	10.0	0.0	45.62	68.89	-2.95
444	20.0	100.0	10.0	0.0	43.09	64.42	-7.45
445	30.0	100.0	10.0	0.0	40.57	59.63	-11.87
446	40.0	100.0	10.0	0.0	37.95	54.38	-16.56
447	55.0	100.0	10.0	0.0	34.09	46.03	-23.70
448	70.0	100.0	10.0	0.0	30.28	36.84	-30.72
449	85.0	100.0	10.0	0.0	26.68	27.95	-36.98
450	100.0	100.0	10.0	0.0	23.67	19.47	-41.90
451	0.0	100.0	40.0	0.0	47.74	71.22	16.25
452	10.0	100.0	40.0	0.0	45.26	66.41	11.95
453	20.0	100.0	40.0	0.0	42.91	61.63	7.57
454	30.0	100.0	40.0	0.0	40.36	56.55	3.06
455	40.0	100.0	40.0	0.0	37.61	51.15	-1.84
456	55.0	100.0	40.0	0.0	33.61	41.98	-9.32
457	70.0	100.0	40.0	0.0	29.71	31.85	-16.78
458	85.0	100.0	40.0	0.0	26.30	21.36	-23.01
459	100.0	100.0	40.0	0.0	23.20	11.31	-27.96
460	0.0	100.0	85.0	0.0	47.21	68.52	41.22
461	10.0	100.0	85.0	0.0	44.77	63.82	36.53
462	20.0	100.0	85.0	0.0	42.29	58.65	31.90
463	30.0	100.0	85.0	0.0	39.70	53.31	27.02
464	40.0	100.0	85.0	0.0	37.02	47.41	21.80
465	55.0	100.0	85.0	0.0	33.11	37.31	14.01
466	70.0	100.0	85.0	0.0	29.13	26.05	5.94
467	85.0	100.0	85.0	0.0	25.86	14.22	-0.81
468	100.0	100.0	85.0	0.0	22.86	1.90	-6.04
469	0.0	0.0	70.0	40.0	65.12	-4.57	43.75
470	20.0	0.0	70.0	40.0	60.22	-9.84	36.65

Job number: Heidelberg Colortoolbox 10

Job name: IT8 7/4 R

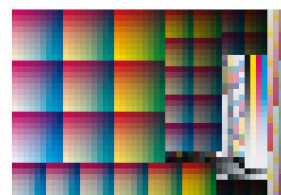
Sheet number: \_\_\_\_\_

Comment: \_\_\_\_\_

Measuremen FOGRA39L.txt

Standard: ISO 12647-2\_2007WB

Paper: glossy coated



Patch	CYAN	MAGENTA	YELLOW	BLACK	L	a	b
471	40.0	0.0	70.0	40.0	54.63	-16.30	28.46
472	70.0	0.0	70.0	40.0	45.62	-29.44	15.02
473	100.0	0.0	70.0	40.0	37.32	-44.87	3.30
474	0.0	0.0	70.0	60.0	50.83	-4.05	33.69
475	20.0	0.0	70.0	60.0	47.14	-8.19	28.33
476	40.0	0.0	70.0	60.0	42.90	-13.38	22.06
477	70.0	0.0	70.0	60.0	35.97	-23.57	11.57
478	100.0	0.0	70.0	60.0	29.41	-35.40	2.29
479	40.0	40.0	3.0	40.0	46.82	6.72	-15.64
480	3.0	3.0	40.0	3.0	88.23	-2.77	28.34
481	3.0	3.0	0.0	3.0	91.01	0.71	-3.77
482	40.0	3.0	0.0	0.0	78.63	-11.10	-21.94
483	0.0	0.0	0.0	98.0	18.19	0.03	-0.07
484	0.0	0.0	98.0	0.0	89.09	-5.02	91.19
485	0.0	98.0	0.0	0.0	48.66	72.83	-3.40
486	98.0	0.0	0.0	0.0	55.74	-36.29	-49.31
487	0.0	10.0	70.0	10.0	80.52	0.77	54.36
488	10.0	40.0	20.0	10.0	67.75	18.91	1.95
489	40.0	0.0	0.0	10.0	74.67	-11.82	-20.14
490	70.0	10.0	40.0	10.0	57.32	-27.80	-6.68
491	0.0	85.0	10.0	0.0	53.40	63.04	-0.59
492	10.0	85.0	10.0	0.0	50.91	58.60	-4.76
493	20.0	85.0	10.0	0.0	48.31	54.22	-8.95
494	30.0	85.0	10.0	0.0	45.74	49.47	-13.24
495	40.0	85.0	10.0	0.0	42.99	44.40	-17.70
496	55.0	85.0	10.0	0.0	38.95	36.35	-24.55
497	70.0	85.0	10.0	0.0	34.84	27.32	-31.31
498	85.0	85.0	10.0	0.0	31.04	18.53	-37.52
499	100.0	85.0	10.0	0.0	27.76	10.27	-42.13
500	0.0	85.0	40.0	0.0	52.83	61.01	16.04
501	10.0	85.0	40.0	0.0	50.30	56.35	11.56
502	20.0	85.0	40.0	0.0	47.69	51.71	7.39
503	30.0	85.0	40.0	0.0	45.11	46.73	2.98
504	40.0	85.0	40.0	0.0	42.31	41.31	-1.76
505	55.0	85.0	40.0	0.0	38.29	32.38	-8.94
506	70.0	85.0	40.0	0.0	34.07	22.28	-16.06
507	85.0	85.0	40.0	0.0	30.30	12.23	-22.43
508	100.0	85.0	40.0	0.0	26.99	2.39	-27.27
509	0.0	85.0	85.0	0.0	51.84	59.24	44.28
510	10.0	85.0	85.0	0.0	49.24	54.37	39.44
511	20.0	85.0	85.0	0.0	46.68	49.44	34.73
512	30.0	85.0	85.0	0.0	44.00	43.86	29.75
513	40.0	85.0	85.0	0.0	41.26	38.03	24.61
514	55.0	85.0	85.0	0.0	37.11	28.03	16.88
515	70.0	85.0	85.0	0.0	33.14	16.77	9.04
516	85.0	85.0	85.0	0.0	29.41	5.00	1.95
517	100.0	85.0	85.0	0.0	26.27	-6.71	-3.40

Job number: Heidelberg Colortoolbox 10

Job name: IT8 7/4 R

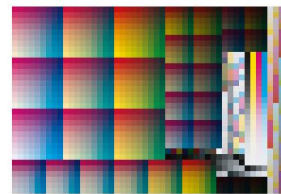
Sheet number: \_\_\_\_\_

Comment: \_\_\_\_\_

Measuremen FOGRA39L.txt

Standard: ISO 12647-2\_2007WB

Paper: glossy coated



Patch	CYAN	MAGENTA	YELLOW	BLACK	L	a	b
518	0.0	100.0	40.0	40.0	34.17	51.34	11.00
519	20.0	100.0	40.0	40.0	30.95	44.67	5.27
520	40.0	100.0	40.0	40.0	27.24	37.10	-1.29
521	70.0	100.0	40.0	40.0	22.02	23.08	-11.62
522	100.0	100.0	40.0	40.0	18.10	7.98	-19.29
523	0.0	100.0	40.0	60.0	26.85	40.00	8.82
524	20.0	100.0	40.0	60.0	24.48	34.69	4.44
525	40.0	100.0	40.0	60.0	21.76	28.53	-0.55
526	70.0	100.0	40.0	60.0	17.92	17.60	-8.50
527	100.0	100.0	40.0	60.0	15.06	6.41	-14.14
528	3.0	0.0	40.0	40.0	66.07	-3.78	20.19
529	40.0	3.0	40.0	3.0	74.47	-17.15	10.17
530	40.0	3.0	0.0	3.0	77.19	-10.97	-21.46
531	3.0	40.0	0.0	0.0	75.50	24.67	-8.13
532	0.0	0.0	0.0	95.0	21.47	0.01	-0.15
533	0.0	0.0	95.0	0.0	89.18	-5.00	88.44
534	0.0	95.0	0.0	0.0	49.69	70.96	-3.93
535	95.0	0.0	0.0	0.0	56.81	-35.25	-48.26
536	0.0	20.0	0.0	10.0	80.74	10.91	-4.94
537	10.0	40.0	40.0	10.0	66.76	17.37	16.00
538	40.0	0.0	10.0	10.0	74.11	-13.51	-13.23
539	70.0	10.0	70.0	10.0	55.66	-32.27	17.40
540	0.0	70.0	10.0	0.0	60.48	50.02	-1.58
541	10.0	70.0	10.0	0.0	57.90	45.73	-5.51
542	20.0	70.0	10.0	0.0	55.23	41.46	-9.69
543	30.0	70.0	10.0	0.0	52.43	36.97	-13.78
544	40.0	70.0	10.0	0.0	49.52	32.10	-18.11
545	55.0	70.0	10.0	0.0	45.14	24.44	-24.78
546	70.0	70.0	10.0	0.0	40.64	15.88	-31.61
547	85.0	70.0	10.0	0.0	36.40	7.54	-37.86
548	100.0	70.0	10.0	0.0	32.77	-0.24	-42.52
549	0.0	70.0	40.0	0.0	59.52	48.15	16.63
550	10.0	70.0	40.0	0.0	56.86	43.80	12.43
551	20.0	70.0	40.0	0.0	54.12	39.21	8.39
552	30.0	70.0	40.0	0.0	51.40	34.26	3.94
553	40.0	70.0	40.0	0.0	48.42	29.09	-0.82
554	55.0	70.0	40.0	0.0	44.06	20.55	-7.61
555	70.0	70.0	40.0	0.0	39.51	10.77	-14.93
556	85.0	70.0	40.0	0.0	35.34	0.79	-21.35
557	100.0	70.0	40.0	0.0	31.81	-8.81	-26.17
558	0.0	70.0	85.0	0.0	57.90	46.97	48.81
559	10.0	70.0	85.0	0.0	55.38	42.25	44.46
560	20.0	70.0	85.0	0.0	52.59	37.39	39.65
561	30.0	70.0	85.0	0.0	49.79	32.01	34.56
562	40.0	70.0	85.0	0.0	46.80	26.11	29.10
563	55.0	70.0	85.0	0.0	42.51	16.49	21.18
564	70.0	70.0	85.0	0.0	38.15	5.15	13.11

Job number: Heidelberg Colortoolbox 10

Job name: IT8 7/4 R

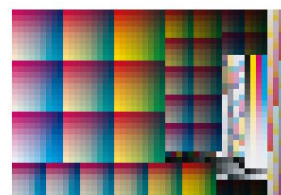
Sheet number: \_\_\_\_\_

Comment: \_\_\_\_\_

Measuremen FOGRA39L.txt

Standard: ISO 12647-2\_2007WB

Paper: glossy coated



Patch	CYAN	MAGENTA	YELLOW	BLACK	L	a	b
565	85.0	70.0	85.0	0.0	34.09	-6.52	5.81
566	100.0	70.0	85.0	0.0	30.71	-18.05	0.04
567	0.0	70.0	40.0	40.0	43.23	34.08	11.48
568	20.0	70.0	40.0	40.0	39.66	27.84	5.97
569	40.0	70.0	40.0	40.0	35.75	20.53	-0.53
570	70.0	70.0	40.0	40.0	29.49	7.53	-10.48
571	100.0	70.0	40.0	40.0	23.67	-6.40	-18.85
572	0.0	70.0	40.0	60.0	34.00	26.67	9.26
573	20.0	70.0	40.0	60.0	31.32	21.73	4.97
574	40.0	70.0	40.0	60.0	28.38	15.69	-0.05
575	70.0	70.0	40.0	60.0	23.61	5.77	-7.78
576	100.0	70.0	40.0	60.0	19.10	-4.69	-14.42
577	0.0	3.0	40.0	40.0	65.94	-1.91	20.63
578	0.0	40.0	40.0	3.0	72.77	22.35	20.89
579	0.0	40.0	0.0	3.0	74.98	25.18	-6.80
580	3.0	0.0	3.0	0.0	93.80	-1.25	-1.13
581	0.0	0.0	0.0	90.0	26.68	0.10	-0.30
582	0.0	0.0	90.0	0.0	89.34	-5.00	83.78
583	0.0	90.0	0.0	0.0	51.50	67.63	-4.68
584	90.0	0.0	0.0	0.0	58.65	-33.38	-46.38
585	0.0	20.0	10.0	10.0	80.13	9.87	1.68
586	10.0	40.0	70.0	10.0	65.11	16.25	39.83
587	40.0	0.0	20.0	10.0	73.40	-15.02	-5.76
588	70.0	20.0	0.0	10.0	56.67	-14.30	-34.72
589	0.0	55.0	10.0	0.0	68.11	36.98	-1.46
590	10.0	55.0	10.0	0.0	65.38	33.14	-5.24
591	20.0	55.0	10.0	0.0	62.54	28.97	-9.28
592	30.0	55.0	10.0	0.0	59.57	24.64	-13.47
593	40.0	55.0	10.0	0.0	56.34	20.01	-17.91
594	55.0	55.0	10.0	0.0	51.59	12.62	-24.69
595	70.0	55.0	10.0	0.0	46.59	4.74	-31.66
596	85.0	55.0	10.0	0.0	41.95	-3.25	-38.01
597	100.0	55.0	10.0	0.0	37.82	-10.61	-42.59
598	0.0	55.0	40.0	0.0	66.93	35.09	18.81
599	10.0	55.0	40.0	0.0	63.99	30.99	14.46
600	20.0	55.0	40.0	0.0	61.04	26.61	10.28
601	30.0	55.0	40.0	0.0	58.08	21.87	5.78
602	40.0	55.0	40.0	0.0	54.98	16.71	1.21
603	55.0	55.0	40.0	0.0	50.19	8.63	-5.73
604	70.0	55.0	40.0	0.0	45.19	-0.71	-13.19
605	85.0	55.0	40.0	0.0	40.61	-10.41	-19.92
606	100.0	55.0	40.0	0.0	36.63	-19.78	-24.94
607	0.0	55.0	85.0	0.0	64.74	34.19	54.63
608	10.0	55.0	85.0	0.0	61.98	29.72	50.10
609	20.0	55.0	85.0	0.0	59.02	24.85	45.04
610	30.0	55.0	85.0	0.0	56.13	19.66	40.15
611	40.0	55.0	85.0	0.0	52.91	14.07	34.73

Job number: Heidelberg Colortoolbox 10

Job name: IT8 7/4 R

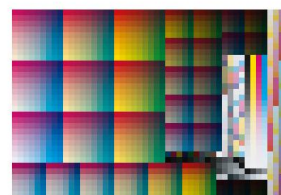
Sheet number: \_\_\_\_\_

Comment: \_\_\_\_\_

Measuremen FOGRA39L.txt

Standard: ISO 12647-2\_2007WB

Paper: glossy coated



Patch	CYAN	MAGENTA	YELLOW	BLACK	L	a	b
612	55.0	55.0	85.0	0.0	48.16	4.53	26.18
613	70.0	55.0	85.0	0.0	43.40	-6.35	17.71
614	85.0	55.0	85.0	0.0	39.05	-18.05	10.17
615	100.0	55.0	85.0	0.0	35.24	-29.22	3.96
616	0.0	40.0	40.0	40.0	54.05	15.66	14.70
617	20.0	40.0	40.0	40.0	49.95	10.00	8.95
618	40.0	40.0	40.0	40.0	45.36	3.35	2.61
619	70.0	40.0	40.0	40.0	37.72	-8.66	-8.14
620	100.0	40.0	40.0	40.0	30.11	-21.98	-17.49
621	0.0	40.0	40.0	60.0	42.43	12.13	11.67
622	20.0	40.0	40.0	60.0	39.29	7.72	7.20
623	40.0	40.0	40.0	60.0	35.77	2.30	2.23
624	70.0	40.0	40.0	60.0	29.86	-6.98	-6.22
625	100.0	40.0	40.0	60.0	23.87	-17.25	-13.75
626	3.0	3.0	40.0	40.0	65.24	-2.67	19.72
627	3.0	40.0	40.0	3.0	71.94	21.22	19.76
628	3.0	40.0	0.0	3.0	74.11	24.13	-7.96
629	40.0	0.0	3.0	0.0	79.57	-13.15	-19.46
630	0.0	0.0	0.0	85.0	31.72	-0.01	-0.41
631	0.0	0.0	85.0	0.0	89.52	-4.96	78.84
632	0.0	85.0	0.0	0.0	53.50	63.85	-5.36
633	85.0	0.0	0.0	0.0	60.55	-31.30	-44.32
634	0.0	20.0	20.0	10.0	79.62	9.00	8.89
635	10.0	70.0	0.0	10.0	54.54	43.37	-10.20
636	40.0	0.0	40.0	10.0	72.05	-17.85	10.12
637	70.0	20.0	10.0	10.0	56.18	-16.67	-28.69
638	0.0	40.0	10.0	0.0	75.77	24.99	-0.49
639	10.0	40.0	10.0	0.0	72.77	21.30	-4.47
640	20.0	40.0	10.0	0.0	69.75	17.52	-8.61
641	30.0	40.0	10.0	0.0	66.54	13.35	-12.79
642	40.0	40.0	10.0	0.0	63.23	8.95	-17.23
643	55.0	40.0	10.0	0.0	57.90	1.97	-24.25
644	70.0	40.0	10.0	0.0	52.46	-5.43	-31.51
645	85.0	40.0	10.0	0.0	47.33	-13.07	-37.96
646	100.0	40.0	10.0	0.0	42.82	-20.29	-42.94
647	0.0	40.0	40.0	0.0	74.18	22.91	21.39
648	10.0	40.0	40.0	0.0	71.22	18.85	17.27
649	20.0	40.0	40.0	0.0	68.12	14.67	12.83
650	30.0	40.0	40.0	0.0	64.82	10.30	8.44
651	40.0	40.0	40.0	0.0	61.53	5.40	3.76
652	55.0	40.0	40.0	0.0	56.25	-2.45	-3.65
653	70.0	40.0	40.0	0.0	50.96	-11.51	-11.32
654	85.0	40.0	40.0	0.0	45.81	-21.03	-18.19
655	100.0	40.0	40.0	0.0	41.23	-29.89	-23.67
656	0.0	40.0	85.0	0.0	71.96	22.00	61.30
657	10.0	40.0	85.0	0.0	68.79	17.57	56.14
658	20.0	40.0	85.0	0.0	65.76	12.96	51.29

Job number: Heidelberg Colortoolbox 10

Job name: IT8 7/4 R

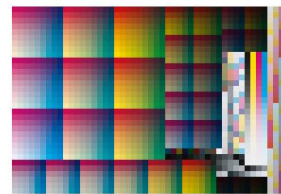
Sheet number: \_\_\_\_\_

Comment: \_\_\_\_\_

Measuremen FOGRA39L.txt

Standard: ISO 12647-2\_2007WB

Paper: glossy coated



Patch	CYAN	MAGENTA	YELLOW	BLACK	L	a	b
659	30.0	40.0	85.0	0.0	62.48	8.07	45.79
660	40.0	40.0	85.0	0.0	59.09	2.38	40.06
661	55.0	40.0	85.0	0.0	53.94	-6.74	31.35
662	70.0	40.0	85.0	0.0	48.74	-17.11	22.54
663	85.0	40.0	85.0	0.0	43.84	-28.64	14.23
664	100.0	40.0	85.0	0.0	39.70	-39.87	7.78
665	0.0	20.0	40.0	40.0	60.86	5.31	17.78
666	20.0	20.0	40.0	40.0	56.31	-0.06	11.80
667	40.0	20.0	40.0	40.0	51.13	-6.20	5.05
668	70.0	20.0	40.0	40.0	42.66	-18.15	-6.24
669	100.0	20.0	40.0	40.0	34.60	-31.78	-15.97
670	0.0	20.0	40.0	60.0	47.66	3.86	13.96
671	20.0	20.0	40.0	60.0	44.20	-0.38	9.32
672	40.0	20.0	40.0	60.0	40.23	-5.28	4.05
673	70.0	20.0	40.0	60.0	33.65	-14.66	-4.84
674	100.0	20.0	40.0	60.0	27.21	-25.09	-12.65
675	40.0	3.0	40.0	40.0	55.47	-13.08	7.11
676	40.0	40.0	40.0	3.0	60.41	5.23	3.69
677	40.0	40.0	0.0	3.0	62.53	10.07	-23.24
678	0.0	3.0	3.0	0.0	93.54	1.42	-0.29
679	0.0	0.0	0.0	80.0	36.61	0.03	-0.51
680	0.0	0.0	80.0	0.0	89.73	-4.84	73.54
681	0.0	80.0	0.0	0.0	55.81	59.50	-5.92
682	80.0	0.0	0.0	0.0	62.56	-29.11	-42.04
683	0.0	20.0	40.0	10.0	78.26	7.83	23.95
684	10.0	70.0	10.0	10.0	54.28	42.59	-5.32
685	40.0	0.0	70.0	10.0	70.13	-20.19	37.15
686	70.0	20.0	20.0	10.0	55.50	-18.73	-22.20
687	0.0	30.0	10.0	0.0	80.84	17.54	0.61
688	10.0	30.0	10.0	0.0	77.78	14.00	-3.36
689	20.0	30.0	10.0	0.0	74.44	10.37	-7.64
690	30.0	30.0	10.0	0.0	71.10	6.49	-12.02
691	40.0	30.0	10.0	0.0	67.49	2.37	-16.77
692	55.0	30.0	10.0	0.0	62.09	-4.48	-23.83
693	70.0	30.0	10.0	0.0	56.33	-11.93	-31.08
694	85.0	30.0	10.0	0.0	50.86	-19.41	-37.76
695	100.0	30.0	10.0	0.0	46.00	-26.16	-43.08
696	0.0	30.0	40.0	0.0	79.09	15.56	23.71
697	10.0	30.0	40.0	0.0	75.97	11.52	19.37
698	20.0	30.0	40.0	0.0	72.73	7.54	15.08
699	30.0	30.0	40.0	0.0	69.23	3.20	10.38
700	40.0	30.0	40.0	0.0	65.73	-1.60	5.39
701	55.0	30.0	40.0	0.0	60.22	-9.20	-2.17
702	70.0	30.0	40.0	0.0	54.56	-18.29	-9.90
703	85.0	30.0	40.0	0.0	49.18	-27.42	-17.00
704	100.0	30.0	40.0	0.0	44.36	-36.35	-22.77
705	0.0	30.0	85.0	0.0	76.62	14.44	65.50



Job number: Heidelberg Colortoolbox 10

Job name: IT8 7/4 R

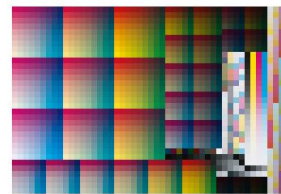
Sheet number: \_\_\_\_\_

Comment: \_\_\_\_\_

Measuremen FOGRA39L.txt

Standard: ISO 12647-2\_2007WB

Paper: glossy coated



Patch	CYAN	MAGENTA	YELLOW	BLACK	L	a	b
706	10.0	30.0	85.0	0.0	73.37	10.09	60.41
707	20.0	30.0	85.0	0.0	70.11	5.70	55.42
708	30.0	30.0	85.0	0.0	66.74	0.71	49.83
709	40.0	30.0	85.0	0.0	63.13	-4.46	43.90
710	55.0	30.0	85.0	0.0	57.76	-13.43	34.99
711	70.0	30.0	85.0	0.0	52.26	-24.20	25.78
712	85.0	30.0	85.0	0.0	47.03	-35.43	17.06
713	100.0	30.0	85.0	0.0	42.63	-46.74	10.25
714	0.0	0.0	40.0	40.0	66.79	-3.18	21.15
715	20.0	0.0	40.0	40.0	61.83	-8.10	14.78
716	40.0	0.0	40.0	40.0	56.21	-14.18	7.52
717	70.0	0.0	40.0	40.0	46.94	-25.80	-4.51
718	100.0	0.0	40.0	40.0	38.29	-39.45	-14.64
719	0.0	0.0	40.0	60.0	52.15	-2.75	16.43
720	20.0	0.0	40.0	60.0	48.40	-6.59	11.54
721	40.0	0.0	40.0	60.0	44.12	-11.59	5.92
722	70.0	0.0	40.0	60.0	36.89	-20.70	-3.54
723	100.0	0.0	40.0	60.0	29.96	-31.30	-11.67
724	3.0	40.0	40.0	40.0	53.46	14.86	13.89
725	3.0	0.0	0.0	40.0	68.54	-0.86	-3.08
726	0.0	0.0	3.0	3.0	93.02	-0.31	0.08
727	3.0	3.0	3.0	0.0	92.51	0.41	-1.58
728	0.0	0.0	0.0	75.0	41.10	0.05	-0.65
729	0.0	0.0	75.0	0.0	90.02	-4.74	68.00
730	0.0	75.0	0.0	0.0	58.32	55.00	-6.36
731	75.0	0.0	0.0	0.0	64.68	-26.83	-39.59
732	0.0	20.0	70.0	10.0	76.50	6.59	50.80
733	10.0	70.0	20.0	10.0	54.00	41.89	0.07
734	40.0	10.0	0.0	10.0	71.32	-7.35	-20.73
735	70.0	20.0	40.0	10.0	54.36	-22.76	-7.97
736	0.0	20.0	10.0	0.0	85.50	10.90	2.04
737	10.0	20.0	10.0	0.0	82.27	7.56	-2.16
738	20.0	20.0	10.0	0.0	78.75	4.00	-6.60
739	30.0	20.0	10.0	0.0	75.28	0.40	-11.14
740	40.0	20.0	10.0	0.0	71.60	-3.76	-15.81
741	55.0	20.0	10.0	0.0	65.80	-10.25	-23.27
742	70.0	20.0	10.0	0.0	59.84	-17.54	-30.77
743	85.0	20.0	10.0	0.0	54.05	-24.73	-37.61
744	100.0	20.0	10.0	0.0	48.92	-31.52	-42.97
745	0.0	20.0	40.0	0.0	83.59	8.79	25.99
746	10.0	20.0	40.0	0.0	80.34	5.10	21.57
747	20.0	20.0	40.0	0.0	76.93	0.94	17.05
748	30.0	20.0	40.0	0.0	73.24	-3.01	12.24
749	40.0	20.0	40.0	0.0	69.58	-7.60	7.32
750	55.0	20.0	40.0	0.0	63.83	-15.28	-0.45
751	70.0	20.0	40.0	0.0	57.83	-24.13	-8.65
752	85.0	20.0	40.0	0.0	52.31	-33.34	-15.81

Job number: Heidelberg Colortoolbox 10

Job name: IT8 7/4 R

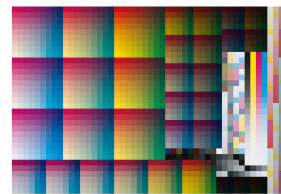
Sheet number: \_\_\_\_\_

Comment: \_\_\_\_\_

Measuremen FOGRA39L.txt

Standard: ISO 12647-2\_2007WB

Paper: glossy coated



Patch	CYAN	MAGENTA	YELLOW	BLACK	L	a	b
753	100.0	20.0	40.0	0.0	47.18	-42.14	-21.86
754	0.0	20.0	85.0	0.0	81.06	7.32	69.78
755	10.0	20.0	85.0	0.0	77.67	3.45	64.73
756	20.0	20.0	85.0	0.0	74.20	-1.00	59.19
757	30.0	20.0	85.0	0.0	70.75	-5.76	53.76
758	40.0	20.0	85.0	0.0	66.91	-10.97	47.50
759	55.0	20.0	85.0	0.0	61.28	-19.69	38.55
760	70.0	20.0	85.0	0.0	55.52	-30.25	28.80
761	85.0	20.0	85.0	0.0	49.98	-41.45	19.78
762	100.0	20.0	85.0	0.0	45.39	-52.79	12.68
763	0.0	100.0	20.0	40.0	34.21	52.60	3.47
764	20.0	100.0	20.0	40.0	31.00	46.51	-2.49
765	40.0	100.0	20.0	40.0	27.38	39.07	-9.01
766	70.0	100.0	20.0	40.0	22.16	25.87	-18.96
767	100.0	100.0	20.0	40.0	18.23	11.78	-26.49
768	0.0	100.0	20.0	60.0	26.88	41.24	3.00
769	20.0	100.0	20.0	60.0	24.48	36.55	-1.51
770	40.0	100.0	20.0	60.0	21.80	30.59	-6.58
771	70.0	100.0	20.0	60.0	17.96	19.94	-14.18
772	100.0	100.0	20.0	60.0	15.06	9.42	-19.85
773	7.0	7.0	0.0	0.0	89.54	1.88	-6.42
774	0.0	3.0	0.0	40.0	68.37	0.97	-2.48
775	3.0	0.0	3.0	3.0	92.04	-1.24	-1.17
776	40.0	3.0	3.0	0.0	78.45	-11.59	-19.72
777	0.0	0.0	0.0	70.0	45.52	0.02	-0.74
778	0.0	0.0	70.0	0.0	90.34	-4.70	62.58
779	0.0	70.0	0.0	0.0	60.83	50.61	-6.72
780	70.0	0.0	0.0	0.0	66.86	-24.73	-37.08
781	0.0	40.0	0.0	10.0	71.60	23.70	-6.55
782	10.0	70.0	40.0	10.0	53.31	40.66	11.59
783	40.0	10.0	10.0	10.0	70.75	-8.77	-14.11
784	70.0	20.0	70.0	10.0	52.76	-27.12	15.17
785	0.0	10.0	10.0	0.0	89.99	4.75	3.73
786	10.0	10.0	10.0	0.0	86.56	1.44	-0.64
787	20.0	10.0	10.0	0.0	82.95	-1.74	-5.35
788	30.0	10.0	10.0	0.0	79.35	-5.37	-10.14
789	40.0	10.0	10.0	0.0	75.43	-9.19	-15.06
790	55.0	10.0	10.0	0.0	69.31	-15.60	-22.63
791	70.0	10.0	10.0	0.0	63.08	-22.70	-30.40
792	85.0	10.0	10.0	0.0	57.08	-29.91	-37.36
793	100.0	10.0	10.0	0.0	51.69	-36.37	-43.12
794	0.0	10.0	40.0	0.0	87.97	2.69	28.52
795	10.0	10.0	40.0	0.0	84.57	-1.08	23.96
796	20.0	10.0	40.0	0.0	80.96	-4.81	19.35
797	30.0	10.0	40.0	0.0	77.27	-9.02	14.30
798	40.0	10.0	40.0	0.0	73.31	-13.52	9.01
799	55.0	10.0	40.0	0.0	67.25	-20.92	0.96

Job number: Heidelberg Colortoolbox 10

Job name: IT8 7/4 R

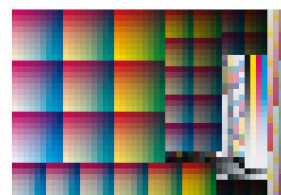
Sheet number: \_\_\_\_\_

Comment: \_\_\_\_\_

Measuremen FOGRA39L.txt

Standard: ISO 12647-2\_2007WB

Paper: glossy coated



Patch	CYAN	MAGENTA	YELLOW	BLACK	L	a	b
800	70.0	10.0	40.0	0.0	61.01	-29.50	-7.22
801	85.0	10.0	40.0	0.0	55.06	-38.59	-14.92
802	100.0	10.0	40.0	0.0	49.76	-47.06	-20.96
803	0.0	10.0	85.0	0.0	85.35	1.21	74.24
804	10.0	10.0	85.0	0.0	81.82	-2.85	68.80
805	20.0	10.0	85.0	0.0	78.32	-7.12	63.31
806	30.0	10.0	85.0	0.0	74.51	-11.67	57.49
807	40.0	10.0	85.0	0.0	70.59	-16.72	51.13
808	55.0	10.0	85.0	0.0	64.59	-25.50	41.72
809	70.0	10.0	85.0	0.0	58.48	-35.86	31.60
810	85.0	10.0	85.0	0.0	52.74	-47.08	22.37
811	100.0	10.0	85.0	0.0	47.83	-58.33	14.85
812	0.0	70.0	20.0	40.0	43.73	35.19	2.45
813	20.0	70.0	20.0	40.0	40.15	29.21	-3.11
814	40.0	70.0	20.0	40.0	36.29	22.29	-9.14
815	70.0	70.0	20.0	40.0	29.99	10.27	-19.05
816	100.0	70.0	20.0	40.0	23.97	-2.42	-27.32
817	0.0	70.0	20.0	60.0	34.40	27.60	2.14
818	20.0	70.0	20.0	60.0	31.69	22.90	-2.12
819	40.0	70.0	20.0	60.0	28.75	17.38	-6.88
820	70.0	70.0	20.0	60.0	23.93	8.02	-14.58
821	100.0	70.0	20.0	60.0	19.22	-1.51	-21.14
822	7.0	0.0	7.0	0.0	92.10	-2.93	-0.02
823	3.0	3.0	0.0	40.0	67.64	0.30	-3.34
824	40.0	0.0	3.0	3.0	78.06	-12.87	-19.13
825	0.0	40.0	3.0	0.0	76.20	25.51	-5.02
826	0.0	0.0	0.0	60.0	54.14	0.01	-0.95
827	0.0	0.0	60.0	0.0	90.92	-4.39	51.52
828	0.0	60.0	0.0	0.0	66.01	41.97	-7.26
829	60.0	0.0	0.0	0.0	71.23	-20.47	-31.85
830	0.0	40.0	10.0	10.0	70.99	23.05	-0.68
831	10.0	70.0	70.0	10.0	52.35	39.41	31.20
832	40.0	10.0	20.0	10.0	70.13	-10.34	-6.90
833	70.0	40.0	0.0	10.0	49.74	-3.15	-34.88
834	0.0	0.0	10.0	0.0	94.34	-0.94	5.44
835	10.0	0.0	10.0	0.0	90.79	-4.15	0.91
836	20.0	0.0	10.0	0.0	87.09	-7.20	-4.01
837	30.0	0.0	10.0	0.0	83.19	-10.65	-8.98
838	40.0	0.0	10.0	0.0	79.14	-14.45	-14.07
839	55.0	0.0	10.0	0.0	72.76	-20.56	-21.87
840	70.0	0.0	10.0	0.0	66.17	-27.53	-29.87
841	85.0	0.0	10.0	0.0	59.89	-34.68	-37.11
842	100.0	0.0	10.0	0.0	54.29	-41.06	-42.90
843	0.0	0.0	40.0	0.0	92.19	-3.48	31.16
844	10.0	0.0	40.0	0.0	88.61	-6.76	26.36
845	20.0	0.0	40.0	0.0	84.92	-10.63	21.56
846	30.0	0.0	40.0	0.0	81.05	-14.46	16.53

Job number: Heidelberg Colortoolbox 10

Job name: IT8 7/4 R

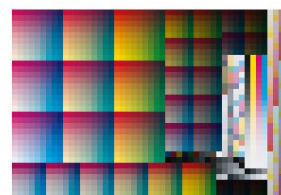
Sheet number: \_\_\_\_\_

Comment: \_\_\_\_\_

Measuremen FOGRA39L.txt

Standard: ISO 12647-2\_2007WB

Paper: glossy coated



Patch	CYAN	MAGENTA	YELLOW	BLACK	L	a	b
847	40.0	0.0	40.0	0.0	76.96	-19.05	11.04
848	55.0	0.0	40.0	0.0	70.62	-26.20	2.57
849	70.0	0.0	40.0	0.0	64.06	-34.83	-6.04
850	85.0	0.0	40.0	0.0	57.82	-43.59	-13.82
851	100.0	0.0	40.0	0.0	52.33	-52.33	-20.14
852	0.0	0.0	85.0	0.0	89.52	-4.96	78.84
853	10.0	0.0	85.0	0.0	85.86	-8.61	73.18
854	20.0	0.0	85.0	0.0	82.14	-12.65	67.50
855	30.0	0.0	85.0	0.0	78.32	-17.35	61.36
856	40.0	0.0	85.0	0.0	74.16	-22.22	54.75
857	55.0	0.0	85.0	0.0	67.86	-30.87	44.99
858	70.0	0.0	85.0	0.0	61.49	-41.43	34.50
859	85.0	0.0	85.0	0.0	55.45	-52.25	25.02
860	100.0	0.0	85.0	0.0	50.20	-63.36	16.99
861	0.0	40.0	20.0	40.0	54.92	16.85	3.92
862	20.0	40.0	20.0	40.0	50.72	11.45	-1.75
863	40.0	40.0	20.0	40.0	46.20	5.14	-7.93
864	70.0	40.0	20.0	40.0	38.31	-5.68	-18.31
865	100.0	40.0	20.0	40.0	30.69	-17.69	-27.30
866	0.0	40.0	20.0	60.0	43.11	13.18	3.24
867	20.0	40.0	20.0	60.0	39.90	8.90	-1.19
868	40.0	40.0	20.0	60.0	36.39	3.99	-6.11
869	70.0	40.0	20.0	60.0	30.25	-4.48	-14.30
870	100.0	40.0	20.0	60.0	24.23	-14.06	-21.48
871	0.0	7.0	7.0	0.0	91.50	3.33	1.94
872	40.0	3.0	0.0	40.0	57.49	-8.63	-15.62
873	0.0	3.0	3.0	3.0	91.79	1.30	-0.39
874	3.0	40.0	3.0	0.0	75.31	24.44	-6.16
875	0.0	0.0	0.0	50.0	61.82	0.00	-1.15
876	0.0	0.0	50.0	0.0	91.55	-4.01	41.02
877	0.0	50.0	0.0	0.0	71.23	33.65	-7.29
878	50.0	0.0	0.0	0.0	75.63	-16.49	-26.67
879	0.0	40.0	20.0	10.0	70.50	22.42	5.73
880	20.0	0.0	0.0	10.0	82.15	-5.44	-10.92
881	40.0	10.0	40.0	10.0	68.77	-12.82	8.35
882	70.0	40.0	10.0	10.0	49.30	-5.18	-29.37
883	0.0	100.0	0.0	0.0	47.99	74.01	-2.98
884	10.0	100.0	0.0	0.0	45.66	69.64	-7.38
885	20.0	100.0	0.0	0.0	43.06	65.22	-11.91
886	30.0	100.0	0.0	0.0	40.62	60.59	-16.22
887	40.0	100.0	0.0	0.0	38.00	55.40	-20.93
888	55.0	100.0	0.0	0.0	34.11	47.44	-28.02
889	70.0	100.0	0.0	0.0	30.35	38.75	-34.92
890	85.0	100.0	0.0	0.0	26.79	30.12	-41.18
891	100.0	100.0	0.0	0.0	24.00	22.02	-45.99
892	0.0	100.0	30.0	0.0	47.82	71.90	10.99
893	10.0	100.0	30.0	0.0	45.44	67.21	6.67

Job number: Heidelberg Colortoolbox 10

Job name: IT8 7/4 R

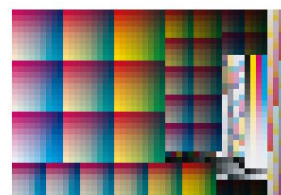
Sheet number: \_\_\_\_\_

Comment: \_\_\_\_\_

Measuremen FOGRA39L.txt

Standard: ISO 12647-2\_2007WB

Paper: glossy coated



Patch	CYAN	MAGENTA	YELLOW	BLACK	L	a	b
894	20.0	100.0	30.0	0.0	42.93	62.47	2.14
895	30.0	100.0	30.0	0.0	40.43	57.56	-2.34
896	40.0	100.0	30.0	0.0	37.73	52.07	-7.14
897	55.0	100.0	30.0	0.0	33.90	43.13	-14.21
898	70.0	100.0	30.0	0.0	29.99	33.29	-21.50
899	85.0	100.0	30.0	0.0	26.42	23.33	-28.00
900	100.0	100.0	30.0	0.0	23.37	14.10	-32.74
901	0.0	100.0	70.0	0.0	47.33	69.31	32.95
902	10.0	100.0	70.0	0.0	44.96	64.62	28.53
903	20.0	100.0	70.0	0.0	42.41	59.42	23.77
904	30.0	100.0	70.0	0.0	39.97	54.20	19.11
905	40.0	100.0	70.0	0.0	37.24	48.49	14.04
906	55.0	100.0	70.0	0.0	33.37	38.62	6.41
907	70.0	100.0	70.0	0.0	29.39	27.68	-1.28
908	85.0	100.0	70.0	0.0	25.89	16.12	-8.02
909	100.0	100.0	70.0	0.0	22.96	4.70	-13.11
910	0.0	20.0	20.0	40.0	62.03	6.41	6.21
911	20.0	20.0	20.0	40.0	57.28	1.47	0.27
912	40.0	20.0	20.0	40.0	52.05	-4.37	-6.53
913	70.0	20.0	20.0	40.0	43.46	-15.06	-17.26
914	100.0	20.0	20.0	40.0	35.26	-26.98	-26.67
915	0.0	20.0	20.0	60.0	48.59	4.86	5.03
916	20.0	20.0	20.0	60.0	44.96	0.93	0.36
917	40.0	20.0	20.0	60.0	40.91	-3.77	-5.02
918	70.0	20.0	20.0	60.0	34.21	-12.21	-13.54
919	100.0	20.0	20.0	60.0	27.68	-21.64	-20.98
920	7.0	7.0	7.0	0.0	89.10	0.99	-1.08
921	3.0	40.0	0.0	40.0	55.19	17.18	-6.24
922	3.0	3.0	3.0	3.0	90.82	0.35	-1.60
923	40.0	40.0	3.0	0.0	63.56	9.87	-21.76
924	0.0	0.0	0.0	40.0	69.28	0.00	-1.34
925	0.0	0.0	40.0	0.0	92.19	-3.48	31.16
926	0.0	40.0	0.0	0.0	76.42	25.77	-6.89
927	40.0	0.0	0.0	0.0	79.72	-12.51	-21.73
928	0.0	40.0	40.0	10.0	69.44	21.10	19.75
929	20.0	0.0	10.0	10.0	81.55	-6.73	-3.89
930	40.0	10.0	70.0	10.0	66.88	-15.22	34.27
931	70.0	40.0	20.0	10.0	48.77	-7.15	-23.45
932	0.0	85.0	0.0	0.0	53.50	63.85	-5.36
933	10.0	85.0	0.0	0.0	51.08	59.42	-9.47
934	20.0	85.0	0.0	0.0	48.41	55.12	-13.91
935	30.0	85.0	0.0	0.0	45.91	50.54	-17.90
936	40.0	85.0	0.0	0.0	43.26	45.56	-22.40
937	55.0	85.0	0.0	0.0	39.14	37.60	-29.11
938	70.0	85.0	0.0	0.0	34.96	29.27	-35.84
939	85.0	85.0	0.0	0.0	31.14	20.91	-41.87
940	100.0	85.0	0.0	0.0	27.98	13.08	-46.43

Job number: Heidelberg Colortoolbox 10

Job name: IT8 7/4 R

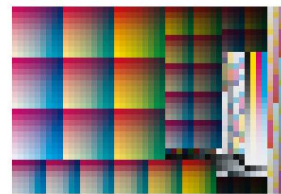
Sheet number: \_\_\_\_\_

Comment: \_\_\_\_\_

Measuremen FOGRA39L.txt

Standard: ISO 12647-2\_2007WB

Paper: glossy coated



Patch	CYAN	MAGENTA	YELLOW	BLACK	L	a	b
941	0.0	85.0	30.0	0.0	52.92	61.68	10.14
942	10.0	85.0	30.0	0.0	50.49	57.05	5.82
943	20.0	85.0	30.0	0.0	47.91	52.55	1.45
944	30.0	85.0	30.0	0.0	45.33	47.65	-2.77
945	40.0	85.0	30.0	0.0	42.61	42.20	-7.51
946	55.0	85.0	30.0	0.0	38.50	33.58	-14.55
947	70.0	85.0	30.0	0.0	34.38	23.88	-21.49
948	85.0	85.0	30.0	0.0	30.59	14.02	-27.66
949	100.0	85.0	30.0	0.0	27.24	4.91	-32.51
950	0.0	85.0	70.0	0.0	52.22	59.71	34.61
951	10.0	85.0	70.0	0.0	49.64	54.85	30.21
952	20.0	85.0	70.0	0.0	47.05	49.96	25.75
953	30.0	85.0	70.0	0.0	44.33	44.64	20.73
954	40.0	85.0	70.0	0.0	41.53	38.94	15.76
955	55.0	85.0	70.0	0.0	37.43	29.22	8.27
956	70.0	85.0	70.0	0.0	33.35	18.22	0.74
957	85.0	85.0	70.0	0.0	29.61	6.78	-6.02
958	100.0	85.0	70.0	0.0	26.51	-4.54	-11.24
959	0.0	0.0	20.0	40.0	68.06	-1.55	8.47
960	20.0	0.0	20.0	40.0	62.99	-6.30	2.43
961	40.0	0.0	20.0	40.0	57.25	-11.97	-4.65
962	70.0	0.0	20.0	40.0	47.80	-22.57	-16.05
963	100.0	0.0	20.0	40.0	38.95	-34.30	-26.07
964	0.0	0.0	20.0	60.0	53.17	-1.33	6.80
965	20.0	0.0	20.0	60.0	49.31	-5.17	2.05
966	40.0	0.0	20.0	60.0	44.89	-9.72	-3.59
967	70.0	0.0	20.0	60.0	37.50	-18.21	-12.67
968	100.0	0.0	20.0	60.0	30.42	-27.60	-20.52
969	7.0	0.0	0.0	7.0	88.46	-2.05	-5.29
970	0.0	0.0	3.0	40.0	69.10	-0.44	-0.58
971	40.0	3.0	3.0	3.0	77.00	-11.42	-19.38
972	3.0	0.0	40.0	0.0	91.13	-4.40	29.72
973	0.0	0.0	0.0	30.0	76.12	0.01	-1.50
974	0.0	0.0	30.0	0.0	92.97	-2.61	22.04
975	0.0	30.0	0.0	0.0	81.39	18.69	-6.17
976	30.0	0.0	0.0	0.0	83.89	-9.16	-16.53
977	0.0	40.0	70.0	10.0	67.93	19.99	44.28
978	20.0	0.0	20.0	10.0	80.83	-7.86	3.69
979	40.0	20.0	0.0	10.0	67.70	-2.16	-21.10
980	70.0	40.0	40.0	10.0	47.91	-10.85	-10.46
981	0.0	70.0	0.0	0.0	60.83	50.61	-6.72
982	10.0	70.0	0.0	0.0	58.19	46.55	-10.80
983	20.0	70.0	0.0	0.0	55.50	42.32	-14.93
984	30.0	70.0	0.0	0.0	52.73	37.94	-18.99
985	40.0	70.0	0.0	0.0	49.76	33.36	-23.30
986	55.0	70.0	0.0	0.0	45.46	25.81	-29.87
987	70.0	70.0	0.0	0.0	40.88	17.87	-36.56

Job number: Heidelberg Colortoolbox 10

Job name: IT8 7/4 R

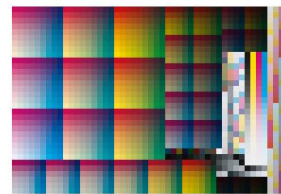
Sheet number: \_\_\_\_\_

Comment: \_\_\_\_\_

Measuremen FOGRA39L.txt

Standard: ISO 12647-2\_2007WB

Paper: glossy coated



Patch	CYAN	MAGENTA	YELLOW	BLACK	L	a	b
988	85.0	70.0	0.0	0.0	36.72	9.83	-42.52
989	100.0	70.0	0.0	0.0	33.09	2.77	-47.18
990	0.0	70.0	30.0	0.0	59.85	48.82	10.32
991	10.0	70.0	30.0	0.0	57.26	44.33	6.12
992	20.0	70.0	30.0	0.0	54.60	39.93	1.93
993	30.0	70.0	30.0	0.0	51.76	35.13	-2.37
994	40.0	70.0	30.0	0.0	48.83	29.96	-6.91
995	55.0	70.0	30.0	0.0	44.50	21.70	-13.80
996	70.0	70.0	30.0	0.0	39.88	12.45	-20.84
997	85.0	70.0	30.0	0.0	35.69	2.98	-27.21
998	100.0	70.0	30.0	0.0	32.08	-5.85	-32.04
999	0.0	70.0	70.0	0.0	58.50	47.13	37.89
1000	10.0	70.0	70.0	0.0	55.88	42.59	33.65
1001	20.0	70.0	70.0	0.0	53.08	37.70	28.94
1002	30.0	70.0	70.0	0.0	50.32	32.40	24.27
1003	40.0	70.0	70.0	0.0	47.37	26.89	19.29
1004	55.0	70.0	70.0	0.0	42.93	17.40	11.64
1005	70.0	70.0	70.0	0.0	38.53	6.56	3.90
1006	85.0	70.0	70.0	0.0	34.40	-4.55	-3.03
1007	100.0	70.0	70.0	0.0	31.04	-15.58	-8.49
1008	0.0	100.0	0.0	40.0	34.35	53.94	-2.94
1009	20.0	100.0	0.0	40.0	31.00	47.96	-9.05
1010	40.0	100.0	0.0	40.0	27.44	40.84	-15.51
1011	70.0	100.0	0.0	40.0	22.27	28.69	-25.32
1012	100.0	100.0	0.0	40.0	18.23	15.76	-32.70
1013	0.0	100.0	0.0	60.0	26.99	42.51	-1.83
1014	20.0	100.0	0.0	60.0	24.48	37.90	-6.55
1015	40.0	100.0	0.0	60.0	21.80	32.19	-11.61
1016	70.0	100.0	0.0	60.0	17.96	22.40	-19.15
1017	100.0	100.0	0.0	60.0	14.95	12.77	-24.76
1018	0.0	7.0	0.0	7.0	87.91	3.76	-3.32
1019	3.0	0.0	3.0	40.0	68.37	-1.12	-1.46
1020	0.0	40.0	3.0	3.0	74.77	24.95	-5.03
1021	0.0	3.0	40.0	0.0	90.93	-1.61	30.36
1022	0.0	0.0	0.0	25.0	79.47	-0.01	-1.59
1023	0.0	0.0	25.0	0.0	93.32	-2.12	17.63
1024	0.0	25.0	0.0	0.0	83.80	15.35	-5.74
1025	25.0	0.0	0.0	0.0	85.85	-7.50	-14.12
1026	0.0	70.0	0.0	10.0	56.92	47.02	-6.49
1027	20.0	0.0	40.0	10.0	79.47	-9.98	19.88
1028	40.0	20.0	10.0	10.0	67.19	-3.70	-14.81
1029	70.0	40.0	70.0	10.0	46.39	-14.93	10.45
1030	0.0	55.0	0.0	0.0	68.62	37.73	-7.34
1031	10.0	55.0	0.0	0.0	65.79	33.98	-11.20
1032	20.0	55.0	0.0	0.0	62.92	29.86	-15.35
1033	30.0	55.0	0.0	0.0	59.97	25.68	-19.34
1034	40.0	55.0	0.0	0.0	56.77	21.29	-23.64



Job number: Heidelberg Colortoolbox 10

Job name: IT8 7/4 R

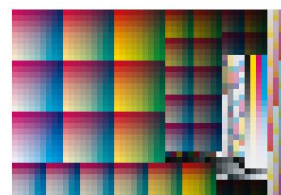
Sheet number: \_\_\_\_\_

Comment: \_\_\_\_\_

Measuremen FOGRA39L.txt

Standard: ISO 12647-2\_2007WB

Paper: glossy coated



Patch	CYAN	MAGENTA	YELLOW	BLACK	L	a	b
1035	55.0	55.0	0.0	0.0	52.01	14.42	-30.26
1036	70.0	55.0	0.0	0.0	47.07	6.82	-37.28
1037	85.0	55.0	0.0	0.0	42.31	-0.59	-43.41
1038	100.0	55.0	0.0	0.0	38.27	-7.70	-47.81
1039	0.0	55.0	30.0	0.0	67.31	35.81	11.51
1040	10.0	55.0	30.0	0.0	64.50	31.56	7.42
1041	20.0	55.0	30.0	0.0	61.65	27.31	3.27
1042	30.0	55.0	30.0	0.0	58.62	22.65	-1.07
1043	40.0	55.0	30.0	0.0	55.42	17.85	-5.74
1044	55.0	55.0	30.0	0.0	50.62	9.87	-12.54
1045	70.0	55.0	30.0	0.0	45.65	1.02	-19.84
1046	85.0	55.0	30.0	0.0	41.09	-8.22	-26.31
1047	100.0	55.0	30.0	0.0	37.08	-16.88	-31.13
1048	0.0	55.0	70.0	0.0	65.45	34.18	42.53
1049	10.0	55.0	70.0	0.0	62.59	29.84	37.90
1050	20.0	55.0	70.0	0.0	59.64	25.17	33.33
1051	30.0	55.0	70.0	0.0	56.74	20.22	28.50
1052	40.0	55.0	70.0	0.0	53.58	14.53	23.32
1053	55.0	55.0	70.0	0.0	48.76	5.45	15.47
1054	70.0	55.0	70.0	0.0	43.99	-5.11	7.59
1055	85.0	55.0	70.0	0.0	39.43	-16.04	0.22
1056	100.0	55.0	70.0	0.0	35.62	-26.80	-5.49
1057	0.0	70.0	0.0	40.0	44.12	36.25	-5.35
1058	20.0	70.0	0.0	40.0	40.61	30.60	-10.94
1059	40.0	70.0	0.0	40.0	36.69	24.05	-16.84
1060	70.0	70.0	0.0	40.0	30.38	12.97	-26.40
1061	100.0	70.0	0.0	40.0	24.35	1.57	-34.53
1062	0.0	70.0	0.0	60.0	34.68	28.59	-3.99
1063	20.0	70.0	0.0	60.0	32.03	24.13	-8.29
1064	40.0	70.0	0.0	60.0	29.03	18.96	-12.92
1065	70.0	70.0	0.0	60.0	24.19	10.30	-20.34
1066	100.0	70.0	0.0	60.0	19.43	1.50	-26.87
1067	7.0	7.0	0.0	7.0	85.62	1.65	-6.15
1068	40.0	0.0	3.0	40.0	58.12	-9.99	-13.92
1069	3.0	40.0	3.0	3.0	73.93	23.91	-6.09
1070	3.0	3.0	40.0	0.0	89.91	-2.73	28.97
1071	0.0	0.0	0.0	20.0	82.79	0.00	-1.67
1072	0.0	0.0	20.0	0.0	93.62	-1.63	13.29
1073	0.0	20.0	0.0	0.0	86.18	12.02	-5.19
1074	20.0	0.0	0.0	0.0	87.67	-5.78	-11.79
1075	0.0	70.0	10.0	10.0	56.59	46.49	-1.76
1076	20.0	0.0	70.0	10.0	77.63	-11.80	48.13
1077	40.0	20.0	20.0	10.0	66.51	-5.07	-8.20
1078	70.0	70.0	0.0	10.0	38.55	16.63	-34.10
1079	0.0	40.0	0.0	0.0	76.42	25.77	-6.89
1080	10.0	40.0	0.0	0.0	73.36	22.09	-10.99
1081	20.0	40.0	0.0	0.0	70.27	18.36	-14.98

Job number: Heidelberg Colortoolbox 10

Job name: IT8 7/4 R

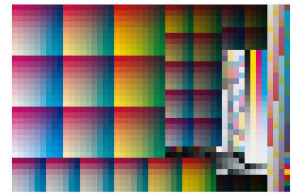
Sheet number: \_\_\_\_\_

Comment: \_\_\_\_\_

Measuremen FOGRA39L.txt

Standard: ISO 12647-2\_2007WB

Paper: glossy coated



Patch	CYAN	MAGENTA	YELLOW	BLACK	L	a	b
1082	30.0	40.0	0.0	0.0	67.15	14.53	-19.19
1083	40.0	40.0	0.0	0.0	63.69	10.31	-23.73
1084	55.0	40.0	0.0	0.0	58.34	3.87	-30.47
1085	70.0	40.0	0.0	0.0	52.94	-3.26	-37.51
1086	85.0	40.0	0.0	0.0	47.94	-10.46	-43.78
1087	100.0	40.0	0.0	0.0	43.33	-17.04	-48.61
1088	0.0	40.0	30.0	0.0	74.69	23.58	13.53
1089	10.0	40.0	30.0	0.0	71.76	19.70	9.49
1090	20.0	40.0	30.0	0.0	68.60	15.57	5.26
1091	30.0	40.0	30.0	0.0	65.48	11.20	0.86
1092	40.0	40.0	30.0	0.0	62.13	6.55	-3.79
1093	55.0	40.0	30.0	0.0	56.82	-1.17	-10.94
1094	70.0	40.0	30.0	0.0	51.37	-9.69	-18.40
1095	85.0	40.0	30.0	0.0	46.26	-18.51	-25.20
1096	100.0	40.0	30.0	0.0	41.81	-26.84	-30.34
1097	0.0	40.0	70.0	0.0	72.62	21.87	47.74
1098	10.0	40.0	70.0	0.0	69.50	17.75	42.85
1099	20.0	40.0	70.0	0.0	66.37	13.31	38.09
1100	30.0	40.0	70.0	0.0	63.21	8.35	33.24
1101	40.0	40.0	70.0	0.0	59.86	3.09	28.08
1102	55.0	40.0	70.0	0.0	54.55	-5.74	19.76
1103	70.0	40.0	70.0	0.0	49.30	-15.95	11.23
1104	85.0	40.0	70.0	0.0	44.36	-26.84	3.51
1105	100.0	40.0	70.0	0.0	40.11	-37.55	-2.52
1106	0.0	40.0	0.0	40.0	55.82	17.92	-5.40
1107	20.0	40.0	0.0	40.0	51.59	12.81	-10.85
1108	40.0	40.0	0.0	40.0	46.91	7.05	-17.02
1109	70.0	40.0	0.0	40.0	39.04	-2.86	-27.02
1110	100.0	40.0	0.0	40.0	31.44	-13.42	-35.82
1111	0.0	40.0	0.0	60.0	43.81	13.99	-3.99
1112	20.0	40.0	0.0	60.0	40.56	10.08	-8.33
1113	40.0	40.0	0.0	60.0	36.93	5.43	-13.24
1114	70.0	40.0	0.0	60.0	30.78	-2.31	-21.13
1115	100.0	40.0	0.0	60.0	24.73	-10.82	-28.14
1116	0.0	0.0	7.0	7.0	90.30	-0.73	2.79
1117	0.0	3.0	3.0	40.0	68.19	0.71	-0.92
1118	40.0	40.0	3.0	3.0	62.41	9.65	-21.37
1119	40.0	3.0	40.0	0.0	75.88	-17.46	10.41
1120	0.0	0.0	0.0	15.0	85.89	-0.01	-1.75
1121	0.0	0.0	15.0	0.0	93.98	-1.31	9.33
1122	0.0	15.0	0.0	0.0	88.45	8.91	-4.55
1123	15.0	0.0	0.0	0.0	89.63	-4.42	-9.34
1124	0.0	70.0	20.0	10.0	56.37	45.83	3.71
1125	20.0	10.0	0.0	10.0	78.43	-0.73	-11.76
1126	40.0	20.0	40.0	10.0	65.28	-7.33	6.75
1127	70.0	70.0	10.0	10.0	38.32	14.79	-29.52
1128	0.0	30.0	0.0	0.0	81.39	18.69	-6.17

Job number: Heidelberg Colortoolbox 10

Job name: IT8 7/4 R

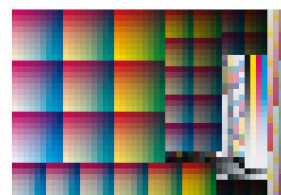
Sheet number: \_\_\_\_\_

Comment: \_\_\_\_\_

Measuremen FOGRA39L.txt

Standard: ISO 12647-2\_2007WB

Paper: glossy coated



Patch	CYAN	MAGENTA	YELLOW	BLACK	L	a	b
1129	10.0	30.0	0.0	0.0	78.29	15.13	-10.21
1130	20.0	30.0	0.0	0.0	75.09	11.44	-14.34
1131	30.0	30.0	0.0	0.0	71.61	7.75	-18.68
1132	40.0	30.0	0.0	0.0	68.01	3.81	-23.24
1133	55.0	30.0	0.0	0.0	62.57	-2.54	-30.23
1134	70.0	30.0	0.0	0.0	56.81	-9.43	-37.57
1135	85.0	30.0	0.0	0.0	51.37	-16.38	-44.04
1136	100.0	30.0	0.0	0.0	46.47	-22.45	-49.15
1137	0.0	30.0	30.0	0.0	79.64	16.13	15.38
1138	10.0	30.0	30.0	0.0	76.57	12.16	11.26
1139	20.0	30.0	30.0	0.0	73.32	8.40	6.96
1140	30.0	30.0	30.0	0.0	69.92	4.09	2.42
1141	40.0	30.0	30.0	0.0	66.28	-0.42	-2.47
1142	55.0	30.0	30.0	0.0	60.83	-7.87	-9.82
1143	70.0	30.0	30.0	0.0	55.19	-16.39	-17.42
1144	85.0	30.0	30.0	0.0	49.73	-24.89	-24.46
1145	100.0	30.0	30.0	0.0	44.93	-33.07	-29.97
1146	0.0	30.0	70.0	0.0	77.38	14.55	51.22
1147	10.0	30.0	70.0	0.0	74.20	10.28	46.40
1148	20.0	30.0	70.0	0.0	70.94	5.99	41.69
1149	30.0	30.0	70.0	0.0	67.53	1.15	36.45
1150	40.0	30.0	70.0	0.0	63.86	-3.88	31.02
1151	55.0	30.0	70.0	0.0	58.41	-12.65	22.46
1152	70.0	30.0	70.0	0.0	52.89	-22.83	13.79
1153	85.0	30.0	70.0	0.0	47.64	-33.42	5.94
1154	100.0	30.0	70.0	0.0	43.03	-43.90	-0.54
1155	0.0	20.0	0.0	40.0	63.02	7.97	-4.25
1156	20.0	20.0	0.0	40.0	58.27	3.13	-9.89
1157	40.0	20.0	0.0	40.0	52.99	-2.20	-16.19
1158	70.0	20.0	0.0	40.0	44.30	-11.90	-26.71
1159	100.0	20.0	0.0	40.0	35.89	-22.16	-36.10
1160	0.0	20.0	0.0	60.0	49.36	6.13	-2.97
1161	20.0	20.0	0.0	60.0	45.72	2.29	-7.49
1162	40.0	20.0	0.0	60.0	41.61	-1.99	-12.59
1163	70.0	20.0	0.0	60.0	34.80	-9.70	-20.98
1164	100.0	20.0	0.0	60.0	28.09	-18.11	-28.34
1165	7.0	0.0	7.0	7.0	88.01	-2.84	-0.13
1166	3.0	3.0	3.0	40.0	67.48	-0.02	-1.76
1167	0.0	0.0	40.0	3.0	90.39	-3.48	30.40
1168	3.0	40.0	40.0	0.0	73.30	21.71	20.18
1169	0.0	0.0	0.0	10.0	88.97	0.00	-1.83
1170	0.0	0.0	10.0	0.0	94.34	-0.94	5.44
1171	0.0	10.0	0.0	0.0	90.67	5.90	-3.84
1172	10.0	0.0	0.0	0.0	91.48	-2.99	-6.93
1173	0.0	70.0	40.0	10.0	55.71	44.68	15.39
1174	20.0	10.0	10.0	10.0	77.81	-1.80	-5.11
1175	40.0	20.0	70.0	10.0	63.51	-9.80	31.53

Job number: Heidelberg Colortoolbox 10

Job name: IT8 7/4 R

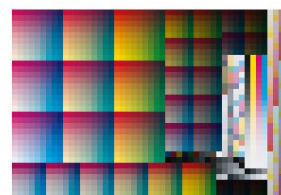
Sheet number: \_\_\_\_\_

Comment: \_\_\_\_\_

Measuremen FOGRA39L.txt

Standard: ISO 12647-2\_2007WB

Paper: glossy coated



Patch	CYAN	MAGENTA	YELLOW	BLACK	L	a	b
1176	70.0	70.0	20.0	10.0	37.99	13.21	-24.58
1177	0.0	20.0	0.0	0.0	86.18	12.02	-5.19
1178	10.0	20.0	0.0	0.0	82.84	8.50	-9.39
1179	20.0	20.0	0.0	0.0	79.43	5.10	-13.62
1180	30.0	20.0	0.0	0.0	75.82	1.74	-18.22
1181	40.0	20.0	0.0	0.0	72.15	-2.02	-22.69
1182	55.0	20.0	0.0	0.0	66.32	-8.19	-30.18
1183	70.0	20.0	0.0	0.0	60.38	-14.98	-37.32
1184	85.0	20.0	0.0	0.0	54.71	-21.80	-44.14
1185	100.0	20.0	0.0	0.0	49.45	-27.84	-49.44
1186	0.0	20.0	30.0	0.0	84.27	9.49	17.51
1187	10.0	20.0	30.0	0.0	81.01	5.66	13.07
1188	20.0	20.0	30.0	0.0	77.70	2.02	8.64
1189	30.0	20.0	30.0	0.0	74.01	-2.16	4.03
1190	40.0	20.0	30.0	0.0	70.27	-6.61	-1.03
1191	55.0	20.0	30.0	0.0	64.48	-13.69	-8.60
1192	70.0	20.0	30.0	0.0	58.56	-22.12	-16.32
1193	85.0	20.0	30.0	0.0	52.85	-30.52	-23.56
1194	100.0	20.0	30.0	0.0	47.80	-38.70	-29.21
1195	0.0	20.0	70.0	0.0	81.78	7.61	54.82
1196	10.0	20.0	70.0	0.0	78.48	3.73	49.98
1197	20.0	20.0	70.0	0.0	74.99	-0.63	44.89
1198	30.0	20.0	70.0	0.0	71.49	-5.13	39.77
1199	40.0	20.0	70.0	0.0	67.73	-10.19	33.97
1200	55.0	20.0	70.0	0.0	62.02	-18.97	25.25
1201	70.0	20.0	70.0	0.0	56.10	-28.87	16.26
1202	85.0	20.0	70.0	0.0	50.62	-39.61	8.04
1203	100.0	20.0	70.0	0.0	45.74	-49.89	1.37
1204	0.0	0.0	0.0	40.0	69.28	0.00	-1.34
1205	20.0	0.0	0.0	40.0	64.07	-4.42	-8.62
1206	40.0	0.0	0.0	40.0	58.24	-9.58	-15.47
1207	70.0	0.0	0.0	40.0	48.67	-19.07	-26.43
1208	100.0	0.0	0.0	40.0	39.77	-29.04	-36.21
1209	0.0	0.0	0.0	60.0	54.14	0.01	-0.95
1210	20.0	0.0	0.0	60.0	50.14	-3.64	-6.44
1211	40.0	0.0	0.0	60.0	45.61	-7.85	-12.04
1212	70.0	0.0	0.0	60.0	38.09	-15.45	-20.86
1213	100.0	0.0	0.0	60.0	31.00	-23.76	-28.41
1214	0.0	7.0	7.0	7.0	87.44	3.04	1.69
1215	40.0	3.0	3.0	40.0	57.36	-8.92	-14.11
1216	3.0	0.0	40.0	3.0	89.38	-4.33	29.04
1217	3.0	0.0	0.0	3.0	92.23	-0.88	-3.40
1218	0.0	0.0	0.0	7.0	90.81	-0.01	-1.86
1219	0.0	0.0	7.0	0.0	94.55	-0.69	3.12
1220	0.0	7.0	0.0	0.0	91.98	4.10	-3.39
1221	7.0	0.0	0.0	0.0	92.57	-2.09	-5.50
1222	0.0	70.0	70.0	10.0	54.71	43.58	35.10

Job number: Heidelberg Colortoolbox 10

Job name: IT8 7/4 R

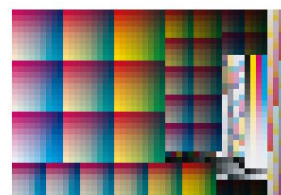
Sheet number: \_\_\_\_\_

Comment: \_\_\_\_\_

Measuremen FOGRA39L.txt

Standard: ISO 12647-2\_2007WB

Paper: glossy coated



Patch	CYAN	MAGENTA	YELLOW	BLACK	L	a	b
1223	20.0	10.0	20.0	10.0	77.13	-2.99	2.22
1224	40.0	40.0	0.0	10.0	59.82	9.47	-22.07
1225	70.0	70.0	40.0	10.0	37.30	9.86	-13.74
1226	0.0	10.0	0.0	0.0	90.67	5.90	-3.84
1227	10.0	10.0	0.0	0.0	87.17	2.62	-8.12
1228	20.0	10.0	0.0	0.0	83.61	-0.60	-12.68
1229	30.0	10.0	0.0	0.0	79.90	-3.83	-17.48
1230	40.0	10.0	0.0	0.0	76.04	-7.62	-22.35
1231	55.0	10.0	0.0	0.0	69.99	-13.55	-29.76
1232	70.0	10.0	0.0	0.0	63.70	-19.95	-37.28
1233	85.0	10.0	0.0	0.0	57.67	-26.55	-44.23
1234	100.0	10.0	0.0	0.0	52.33	-32.42	-49.77
1235	0.0	10.0	30.0	0.0	88.67	3.41	19.59
1236	10.0	10.0	30.0	0.0	85.22	-0.30	15.05
1237	20.0	10.0	30.0	0.0	81.78	-4.02	10.60
1238	30.0	10.0	30.0	0.0	77.90	-7.91	5.75
1239	40.0	10.0	30.0	0.0	74.04	-12.13	0.60
1240	55.0	10.0	30.0	0.0	67.95	-19.30	-7.37
1241	70.0	10.0	30.0	0.0	61.70	-27.44	-15.41
1242	85.0	10.0	30.0	0.0	55.75	-35.93	-22.87
1243	100.0	10.0	30.0	0.0	50.35	-43.70	-28.68
1244	0.0	10.0	70.0	0.0	86.13	1.43	58.80
1245	10.0	10.0	70.0	0.0	82.63	-2.60	53.57
1246	20.0	10.0	70.0	0.0	79.12	-6.71	48.45
1247	30.0	10.0	70.0	0.0	75.34	-11.08	42.84
1248	40.0	10.0	70.0	0.0	71.34	-16.05	36.92
1249	55.0	10.0	70.0	0.0	65.40	-24.46	27.96
1250	70.0	10.0	70.0	0.0	59.21	-34.32	18.75
1251	85.0	10.0	70.0	0.0	53.40	-44.92	10.16
1252	100.0	10.0	70.0	0.0	48.35	-55.45	3.12
1253	100.0	0.0	0.0	70.0	26.04	-20.36	-24.02
1254	0.0	100.0	0.0	70.0	23.00	36.02	-1.08
1255	0.0	0.0	100.0	70.0	42.06	-4.51	42.13
1256	100.0	100.0	0.0	70.0	13.29	10.67	-20.10
1257	100.0	0.0	100.0	70.0	25.01	-31.82	12.26
1258	0.0	100.0	100.0	70.0	22.83	30.00	21.00
1259	40.0	40.0	0.0	70.0	31.09	4.71	-11.14
1260	40.0	0.0	40.0	70.0	37.15	-9.94	4.95
1261	0.0	40.0	40.0	70.0	35.77	10.19	9.83
1262	0.0	0.0	0.0	0.0	95.00	-0.01	-1.98
1263	7.0	7.0	7.0	7.0	85.18	0.83	-1.13
1264	0.0	40.0	3.0	40.0	55.65	17.73	-4.10
1265	40.0	0.0	40.0	3.0	75.50	-18.69	10.77
1266	40.0	0.0	0.0	3.0	78.21	-12.33	-21.25
1267	0.0	0.0	0.0	5.0	92.03	-0.00	-1.91
1268	0.0	0.0	5.0	0.0	94.69	-0.50	1.66
1269	0.0	5.0	0.0	0.0	92.86	2.94	-3.00

Job number: Heidelberg Colortoolbox 10

Job name: IT8 7/4 R

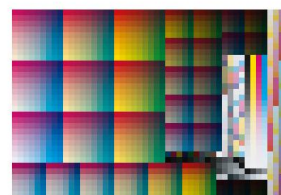
Sheet number: \_\_\_\_\_

Comment: \_\_\_\_\_

Measuremen FOGRA39L.txt

Standard: ISO 12647-2\_2007WB

Paper: glossy coated



Patch	CYAN	MAGENTA	YELLOW	BLACK	L	a	b
1270	5.0	0.0	0.0	0.0	93.28	-1.50	-4.50
1271	10.0	0.0	0.0	10.0	85.69	-2.81	-6.42
1272	20.0	10.0	40.0	10.0	75.89	-4.74	17.88
1273	40.0	40.0	10.0	10.0	59.39	8.19	-16.14
1274	70.0	70.0	70.0	10.0	36.40	5.94	3.71
1275	0.0	0.0	0.0	0.0	95.00	-0.01	-1.98
1276	10.0	0.0	0.0	0.0	91.48	-2.99	-6.93
1277	20.0	0.0	0.0	0.0	87.67	-5.78	-11.79
1278	30.0	0.0	0.0	0.0	83.89	-9.16	-16.53
1279	40.0	0.0	0.0	0.0	79.72	-12.51	-21.73
1280	55.0	0.0	0.0	0.0	73.49	-18.46	-29.23
1281	70.0	0.0	0.0	0.0	66.86	-24.73	-37.08
1282	85.0	0.0	0.0	0.0	60.55	-31.30	-44.32
1283	100.0	0.0	0.0	0.0	55.00	-37.00	-49.98
1284	0.0	0.0	30.0	0.0	92.97	-2.61	22.04
1285	10.0	0.0	30.0	0.0	89.34	-6.10	17.24
1286	20.0	0.0	30.0	0.0	85.69	-9.61	12.62
1287	30.0	0.0	30.0	0.0	81.84	-13.40	7.61
1288	40.0	0.0	30.0	0.0	77.73	-17.57	2.14
1289	55.0	0.0	30.0	0.0	71.39	-24.59	-5.87
1290	70.0	0.0	30.0	0.0	64.72	-32.52	-14.30
1291	85.0	0.0	30.0	0.0	58.49	-40.82	-22.04
1292	100.0	0.0	30.0	0.0	52.95	-48.75	-28.13
1293	0.0	0.0	70.0	0.0	90.34	-4.70	62.58
1294	10.0	0.0	70.0	0.0	86.73	-8.60	57.35
1295	20.0	0.0	70.0	0.0	83.03	-12.44	51.98
1296	30.0	0.0	70.0	0.0	79.01	-16.82	46.02
1297	40.0	0.0	70.0	0.0	74.94	-21.51	40.15
1298	55.0	0.0	70.0	0.0	68.63	-29.85	30.69
1299	70.0	0.0	70.0	0.0	62.13	-39.84	21.03
1300	85.0	0.0	70.0	0.0	56.05	-50.28	12.38
1301	100.0	0.0	70.0	0.0	50.69	-60.64	4.82
1302	100.0	85.0	85.0	100.0	8.91	-0.93	1.21
1303	100.0	85.0	85.0	80.0	13.11	-2.62	0.70
1304	100.0	85.0	85.0	60.0	16.99	-4.36	-0.42
1305	80.0	65.0	65.0	100.0	9.72	-0.74	0.32
1306	80.0	65.0	65.0	80.0	16.26	-1.65	-0.37
1307	80.0	65.0	65.0	60.0	22.58	-2.19	-1.17
1308	80.0	65.0	65.0	40.0	28.09	-2.84	-1.85
1309	60.0	45.0	45.0	100.0	10.99	-0.80	-0.45
1310	60.0	45.0	45.0	80.0	21.17	-1.40	-1.05
1311	60.0	45.0	45.0	60.0	30.57	-2.15	-1.77
1312	60.0	45.0	45.0	40.0	38.66	-2.33	-2.51
1313	60.0	45.0	45.0	20.0	45.80	-2.58	-3.05
1314	40.0	27.0	27.0	100.0	12.54	-0.77	-0.66
1315	40.0	27.0	27.0	80.0	26.68	-1.44	-1.52
1316	0.0	0.0	0.0	3.0	93.24	-0.00	-1.93

Job number: Heidelberg Colortoolbox 10

Job name: IT8 7/4 R

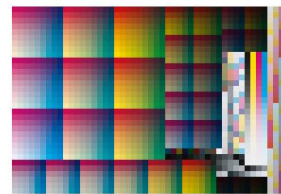
Sheet number: \_\_\_\_\_

Comment: \_\_\_\_\_

Measuremen FOGRA39L.txt

Standard: ISO 12647-2\_2007WB

Paper: glossy coated



Patch	CYAN	MAGENTA	YELLOW	BLACK	L	a	b
1317	0.0	0.0	3.0	0.0	94.84	-0.30	0.21
1318	0.0	3.0	0.0	0.0	93.74	1.75	-2.58
1319	3.0	0.0	0.0	0.0	94.00	-0.90	-3.48
1320	10.0	0.0	10.0	10.0	85.02	-3.88	0.65
1321	20.0	10.0	70.0	10.0	74.08	-6.60	44.94
1322	40.0	40.0	20.0	10.0	58.88	7.03	-10.12
1323	50.0	40.0	40.0	0.0	58.04	0.26	-1.11
1324	0.0	100.0	0.0	20.0	41.31	64.40	-3.32
1325	10.0	100.0	0.0	20.0	39.39	60.76	-6.94
1326	20.0	100.0	0.0	20.0	37.19	57.08	-10.74
1327	40.0	100.0	0.0	20.0	32.83	48.44	-18.56
1328	70.0	100.0	0.0	20.0	26.45	33.83	-30.53
1329	100.0	100.0	0.0	20.0	21.32	18.89	-39.65
1330	0.0	100.0	10.0	20.0	41.22	63.74	0.44
1331	10.0	100.0	10.0	20.0	39.36	60.04	-3.12
1332	20.0	100.0	10.0	20.0	37.23	56.29	-6.87
1333	40.0	100.0	10.0	20.0	32.79	47.59	-14.79
1334	70.0	100.0	10.0	20.0	26.42	32.10	-26.88
1335	100.0	100.0	10.0	20.0	21.24	16.50	-36.09
1336	0.0	100.0	20.0	20.0	41.14	62.91	4.39
1337	10.0	100.0	20.0	20.0	39.24	59.34	0.87
1338	20.0	100.0	20.0	20.0	37.17	55.46	-2.88
1339	40.0	100.0	20.0	20.0	32.74	46.48	-10.84
1340	70.0	100.0	20.0	20.0	26.24	30.68	-23.07
1341	100.0	100.0	20.0	20.0	21.21	14.14	-32.25
1342	0.0	100.0	40.0	20.0	41.09	61.48	13.45
1343	10.0	100.0	40.0	20.0	39.04	57.56	9.96
1344	20.0	100.0	40.0	20.0	37.10	53.47	6.30
1345	40.0	100.0	40.0	20.0	32.55	44.41	-1.77
1346	70.0	100.0	40.0	20.0	26.01	27.70	-14.47
1347	100.0	100.0	40.0	20.0	20.90	9.58	-23.66
1348	0.0	100.0	70.0	20.0	40.70	59.58	27.75
1349	10.0	100.0	70.0	20.0	38.76	55.69	24.14
1350	20.0	100.0	70.0	20.0	36.65	51.38	20.24
1351	40.0	100.0	70.0	20.0	32.24	41.93	11.86
1352	70.0	100.0	70.0	20.0	25.80	23.93	-1.03
1353	100.0	100.0	70.0	20.0	20.79	3.76	-10.69
1354	0.0	100.0	100.0	20.0	40.39	58.23	40.74
1355	10.0	100.0	100.0	20.0	38.45	54.27	36.88
1356	20.0	100.0	100.0	20.0	36.35	49.98	32.86
1357	40.0	100.0	100.0	20.0	31.92	39.92	23.98
1358	70.0	100.0	100.0	20.0	25.53	21.07	10.79
1359	100.0	100.0	100.0	20.0	20.71	-0.46	0.95
1360	40.0	27.0	27.0	60.0	39.19	-1.96	-2.51
1361	40.0	27.0	27.0	40.0	49.80	-2.09	-3.32
1362	40.0	27.0	27.0	20.0	59.33	-2.19	-3.88
1363	40.0	27.0	27.0	10.0	63.53	-2.06	-4.13



Job number: Heidelberg Colortoolbox 10

Job name: IT8 7/4 R

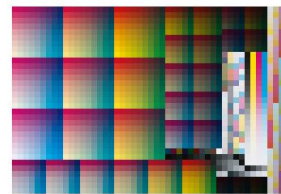
Sheet number: \_\_\_\_\_

Comment: \_\_\_\_\_

Measuremen FOGRA39L.txt

Standard: ISO 12647-2\_2007WB

Paper: glossy coated



Patch	CYAN	MAGENTA	YELLOW	BLACK	L	a	b
1364	20.0	12.0	12.0	100.0	14.17	-0.18	-0.56
1365	0.0	0.0	0.0	2.0	93.85	-0.00	-1.95
1366	0.0	0.0	2.0	0.0	94.92	-0.21	-0.51
1367	0.0	2.0	0.0	0.0	94.18	1.18	-2.38
1368	2.0	0.0	0.0	0.0	94.35	-0.61	-2.97
1369	10.0	0.0	20.0	10.0	84.26	-4.82	7.98
1370	20.0	20.0	0.0	10.0	74.53	4.52	-12.65
1371	40.0	40.0	40.0	10.0	57.78	4.84	3.52
1372	100.0	0.0	0.0	10.0	51.39	-35.29	-46.67
1373	0.0	70.0	0.0	20.0	52.84	43.51	-6.26
1374	10.0	70.0	0.0	20.0	50.70	40.14	-9.59
1375	20.0	70.0	0.0	20.0	48.50	36.60	-13.03
1376	40.0	70.0	0.0	20.0	43.67	28.73	-20.18
1377	70.0	70.0	0.0	20.0	36.00	15.37	-31.64
1378	100.0	70.0	0.0	20.0	28.85	2.25	-41.30
1379	0.0	70.0	10.0	20.0	52.53	43.04	-1.88
1380	10.0	70.0	10.0	20.0	50.45	39.47	-5.08
1381	20.0	70.0	10.0	20.0	48.26	35.82	-8.56
1382	40.0	70.0	10.0	20.0	43.45	27.60	-15.76
1383	70.0	70.0	10.0	20.0	35.81	13.61	-27.39
1384	100.0	70.0	10.0	20.0	28.62	-0.19	-37.27
1385	0.0	70.0	20.0	20.0	52.35	42.36	3.19
1386	10.0	70.0	20.0	20.0	50.20	38.74	-0.15
1387	20.0	70.0	20.0	20.0	47.93	35.11	-3.59
1388	40.0	70.0	20.0	20.0	43.17	26.70	-10.93
1389	70.0	70.0	20.0	20.0	35.50	12.23	-22.89
1390	100.0	70.0	20.0	20.0	28.41	-2.86	-32.69
1391	0.0	70.0	40.0	20.0	51.72	41.27	14.01
1392	10.0	70.0	40.0	20.0	49.57	37.60	10.58
1393	20.0	70.0	40.0	20.0	47.30	33.70	7.19
1394	40.0	70.0	40.0	20.0	42.49	24.75	-0.70
1395	70.0	70.0	40.0	20.0	34.86	9.07	-12.80
1396	100.0	70.0	40.0	20.0	28.03	-7.81	-22.75
1397	0.0	70.0	70.0	20.0	50.77	40.12	32.39
1398	10.0	70.0	70.0	20.0	48.65	36.34	28.97
1399	20.0	70.0	70.0	20.0	46.35	32.21	25.01
1400	40.0	70.0	70.0	20.0	41.55	22.70	16.78
1401	70.0	70.0	70.0	20.0	34.09	5.32	3.58
1402	100.0	70.0	70.0	20.0	27.49	-13.80	-7.36
1403	0.0	70.0	100.0	20.0	49.81	39.69	50.62
1404	10.0	70.0	100.0	20.0	47.62	35.62	46.45
1405	20.0	70.0	100.0	20.0	45.47	31.51	42.25
1406	40.0	70.0	100.0	20.0	40.62	21.52	33.11
1407	70.0	70.0	100.0	20.0	33.50	3.25	18.65
1408	100.0	70.0	100.0	20.0	27.13	-17.56	6.60
1409	20.0	12.0	12.0	80.0	31.85	-0.80	-1.48
1410	20.0	12.0	12.0	60.0	47.04	-1.09	-2.37

Job number: Heidelberg Colortoolbox 10

Job name: IT8 7/4 R

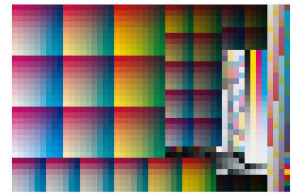
Sheet number: \_\_\_\_\_

Comment: \_\_\_\_\_

Measuremen FOGRA39L.txt

Standard: ISO 12647-2\_2007WB

Paper: glossy coated



Patch	CYAN	MAGENTA	YELLOW	BLACK	L	a	b
1411	20.0	12.0	12.0	40.0	60.01	-1.15	-3.28
1412	20.0	12.0	12.0	20.0	71.67	-1.11	-3.68
1413	20.0	12.0	12.0	10.0	76.86	-1.01	-3.91
1414	10.0	6.0	6.0	100.0	15.06	-0.27	-0.29
1415	10.0	6.0	6.0	80.0	34.25	-0.45	-1.07
1416	10.0	6.0	6.0	60.0	50.62	-0.64	-1.83
1417	10.0	6.0	6.0	40.0	64.68	-0.63	-2.74
1418	10.0	0.0	40.0	10.0	82.90	-6.43	24.30
1419	20.0	20.0	10.0	10.0	73.91	3.55	-6.19
1420	40.0	40.0	70.0	10.0	56.18	2.62	26.07
1421	0.0	100.0	0.0	10.0	44.66	69.20	-3.10
1422	0.0	40.0	0.0	20.0	66.71	21.66	-6.23
1423	10.0	40.0	0.0	20.0	64.16	18.67	-9.60
1424	20.0	40.0	0.0	20.0	61.57	15.54	-12.91
1425	40.0	40.0	0.0	20.0	55.90	8.54	-20.38
1426	70.0	40.0	0.0	20.0	46.45	-3.21	-32.34
1427	100.0	40.0	0.0	20.0	37.54	-15.26	-42.61
1428	0.0	40.0	10.0	20.0	66.12	21.04	-0.82
1429	10.0	40.0	10.0	20.0	63.63	17.96	-4.07
1430	20.0	40.0	10.0	20.0	61.08	14.87	-7.54
1431	40.0	40.0	10.0	20.0	55.48	7.41	-14.89
1432	70.0	40.0	10.0	20.0	46.04	-4.94	-27.25
1433	100.0	40.0	10.0	20.0	37.15	-17.97	-37.72
1434	0.0	40.0	20.0	20.0	65.67	20.47	5.07
1435	10.0	40.0	20.0	20.0	63.15	17.29	1.61
1436	20.0	40.0	20.0	20.0	60.54	13.93	-1.87
1437	40.0	40.0	20.0	20.0	55.01	6.33	-9.41
1438	70.0	40.0	20.0	20.0	45.52	-6.72	-21.88
1439	100.0	40.0	20.0	20.0	36.63	-20.79	-32.44
1440	0.0	40.0	40.0	20.0	64.66	19.20	18.03
1441	10.0	40.0	40.0	20.0	62.21	15.85	14.66
1442	20.0	40.0	40.0	20.0	59.61	12.35	10.98
1443	40.0	40.0	40.0	20.0	53.95	4.33	3.21
1444	70.0	40.0	40.0	20.0	44.76	-10.19	-9.78
1445	100.0	40.0	40.0	20.0	35.95	-26.21	-20.84
1446	0.0	40.0	70.0	20.0	63.17	18.09	40.91
1447	10.0	40.0	70.0	20.0	60.60	14.72	36.86
1448	20.0	40.0	70.0	20.0	57.99	11.04	32.91
1449	40.0	40.0	70.0	20.0	52.45	2.19	24.34
1450	70.0	40.0	70.0	20.0	43.35	-13.96	9.76
1451	100.0	40.0	70.0	20.0	35.08	-32.62	-2.64
1452	0.0	40.0	100.0	20.0	61.80	18.07	63.34
1453	10.0	40.0	100.0	20.0	59.35	14.13	58.99
1454	20.0	40.0	100.0	20.0	56.76	10.26	54.46
1455	40.0	40.0	100.0	20.0	51.28	1.27	44.50
1456	70.0	40.0	100.0	20.0	42.51	-15.94	28.25
1457	100.0	40.0	100.0	20.0	34.56	-36.46	13.89

Job number: Heidelberg Colortoolbox 10

Job name: IT8 7/4 R

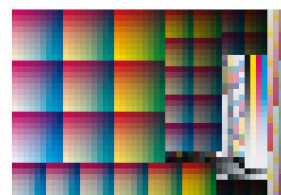
Sheet number: \_\_\_\_\_

Comment: \_\_\_\_\_

Measuremen FOGRA39L.txt

Standard: ISO 12647-2\_2007WB

Paper: glossy coated



Patch	CYAN	MAGENTA	YELLOW	BLACK	L	a	b
1458	10.0	6.0	6.0	20.0	77.27	-0.59	-2.92
1459	10.0	6.0	6.0	10.0	82.99	-0.47	-2.98
1460	100.0	85.0	85.0	0.0	26.27	-6.71	-3.40
1461	80.0	65.0	65.0	0.0	37.46	-3.89	-3.13
1462	60.0	45.0	45.0	0.0	52.22	-2.48	-3.53
1463	40.0	27.0	27.0	0.0	67.67	-1.96	-4.35
1464	20.0	12.0	12.0	0.0	81.95	-0.89	-4.08
1465	10.0	6.0	6.0	0.0	88.54	-0.39	-3.10
1466	5.0	3.0	3.0	0.0	91.80	-0.20	-2.59
1467	10.0	0.0	70.0	10.0	81.04	-8.22	53.07
1468	20.0	20.0	20.0	10.0	73.31	2.47	0.78
1469	40.0	70.0	0.0	10.0	46.78	31.05	-21.78
1470	0.0	0.0	100.0	10.0	82.98	-5.09	86.62
1471	0.0	20.0	0.0	20.0	75.30	9.70	-4.72
1472	10.0	20.0	0.0	20.0	72.48	6.79	-8.19
1473	20.0	20.0	0.0	20.0	69.57	3.95	-11.71
1474	40.0	20.0	0.0	20.0	63.22	-2.32	-19.44
1475	70.0	20.0	0.0	20.0	52.85	-13.74	-32.14
1476	100.0	20.0	0.0	20.0	43.00	-25.52	-43.06
1477	0.0	20.0	10.0	20.0	74.66	8.77	1.33
1478	10.0	20.0	10.0	20.0	71.95	6.01	-2.12
1479	20.0	20.0	10.0	20.0	68.95	3.02	-5.81
1480	40.0	20.0	10.0	20.0	62.73	-3.72	-13.67
1481	70.0	20.0	10.0	20.0	52.41	-15.82	-26.61
1482	100.0	20.0	10.0	20.0	42.60	-28.40	-37.53
1483	0.0	20.0	20.0	20.0	74.18	7.96	7.92
1484	10.0	20.0	20.0	20.0	71.36	4.99	4.29
1485	20.0	20.0	20.0	20.0	68.40	2.07	0.59
1486	40.0	20.0	20.0	20.0	62.07	-4.96	-7.75
1487	70.0	20.0	20.0	20.0	51.78	-17.74	-20.70
1488	100.0	20.0	20.0	20.0	42.17	-31.57	-31.74
1489	0.0	20.0	40.0	20.0	72.86	6.82	21.85
1490	10.0	20.0	40.0	20.0	70.15	3.80	18.23
1491	20.0	20.0	40.0	20.0	67.27	0.35	14.46
1492	40.0	20.0	40.0	20.0	60.93	-7.05	6.18
1493	70.0	20.0	40.0	20.0	50.73	-21.39	-7.50
1494	100.0	20.0	40.0	20.0	41.30	-37.39	-19.01
1495	0.0	20.0	70.0	20.0	71.11	5.54	46.89
1496	10.0	20.0	70.0	20.0	68.38	2.39	42.92
1497	20.0	20.0	70.0	20.0	65.47	-1.23	38.67
1498	40.0	20.0	70.0	20.0	59.26	-9.48	29.29
1499	70.0	20.0	70.0	20.0	49.26	-25.46	14.12
1500	100.0	20.0	70.0	20.0	40.15	-43.77	1.07
1501	0.0	20.0	100.0	20.0	69.86	5.11	72.08
1502	10.0	20.0	100.0	20.0	66.98	1.65	67.40
1503	20.0	20.0	100.0	20.0	64.23	-1.99	62.65
1504	40.0	20.0	100.0	20.0	57.97	-10.83	51.81

Job number: Heidelberg Colortoolbox 10

Job name: IT8 7/4 R

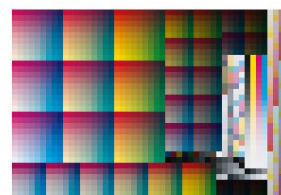
Sheet number: \_\_\_\_\_

Comment: \_\_\_\_\_

Measuremen FOGRA39L.txt

Standard: ISO 12647-2\_2007WB

Paper: glossy coated



Patch	CYAN	MAGENTA	YELLOW	BLACK	L	a	b
1505	70.0	20.0	100.0	20.0	48.29	-27.53	34.44
1506	100.0	20.0	100.0	20.0	39.53	-47.82	19.12
1507	0.0	100.0	0.0	100.0	10.41	13.96	1.34
1508	40.0	100.0	0.0	100.0	8.99	10.98	-1.91
1509	100.0	100.0	0.0	100.0	7.86	5.83	-6.00
1510	0.0	100.0	40.0	100.0	10.70	11.63	4.12
1511	40.0	100.0	40.0	100.0	9.56	8.21	1.43
1512	100.0	100.0	40.0	100.0	8.22	2.80	-2.43
1513	0.0	100.0	100.0	100.0	11.35	8.59	7.29
1514	40.0	100.0	100.0	100.0	10.11	4.93	4.97
1515	100.0	100.0	100.0	100.0	8.74	-0.20	2.05
1516	10.0	10.0	0.0	10.0	81.79	2.21	-7.53
1517	20.0	20.0	40.0	10.0	72.14	0.69	15.77
1518	40.0	70.0	10.0	10.0	46.55	29.86	-16.95
1519	0.0	100.0	100.0	10.0	43.70	63.12	44.29
1520	0.0	10.0	0.0	20.0	79.11	4.61	-3.58
1521	10.0	10.0	0.0	20.0	76.17	1.89	-7.10
1522	20.0	10.0	0.0	20.0	73.12	-0.84	-10.89
1523	40.0	10.0	0.0	20.0	66.49	-7.02	-19.15
1524	70.0	10.0	0.0	20.0	55.60	-18.04	-32.10
1525	100.0	10.0	0.0	20.0	45.50	-29.61	-43.24
1526	0.0	10.0	10.0	20.0	78.47	3.62	2.76
1527	10.0	10.0	10.0	20.0	75.59	0.92	-0.84
1528	20.0	10.0	10.0	20.0	72.51	-1.79	-4.76
1529	40.0	10.0	10.0	20.0	65.96	-8.32	-13.03
1530	70.0	10.0	10.0	20.0	55.10	-20.30	-26.27
1531	100.0	10.0	10.0	20.0	45.00	-32.80	-37.56
1532	0.0	10.0	20.0	20.0	77.87	2.82	9.31
1533	10.0	10.0	20.0	20.0	74.91	0.06	5.60
1534	20.0	10.0	20.0	20.0	71.84	-2.94	1.88
1535	40.0	10.0	20.0	20.0	65.38	-9.73	-6.48
1536	70.0	10.0	20.0	20.0	54.51	-22.25	-19.97
1537	100.0	10.0	20.0	20.0	44.49	-35.96	-31.36
1538	0.0	10.0	40.0	20.0	76.53	1.72	23.89
1539	10.0	10.0	40.0	20.0	73.71	-1.38	20.16
1540	20.0	10.0	40.0	20.0	70.67	-4.51	16.34
1541	40.0	10.0	40.0	20.0	64.07	-12.07	7.54
1542	70.0	10.0	40.0	20.0	53.40	-25.97	-6.34
1543	100.0	10.0	40.0	20.0	43.54	-41.77	-18.14
1544	0.0	10.0	70.0	20.0	74.74	0.32	50.15
1545	10.0	10.0	70.0	20.0	71.85	-2.96	45.83
1546	20.0	10.0	70.0	20.0	68.92	-6.35	41.60
1547	40.0	10.0	70.0	20.0	62.29	-14.42	31.74
1548	70.0	10.0	70.0	20.0	51.88	-30.18	16.19
1549	100.0	10.0	70.0	20.0	42.41	-48.71	2.68
1550	0.0	10.0	100.0	20.0	73.47	-0.20	76.03
1551	10.0	10.0	100.0	20.0	70.56	-3.62	71.37

Job number: Heidelberg Colortoolbox 10

Job name: IT8 7/4 R

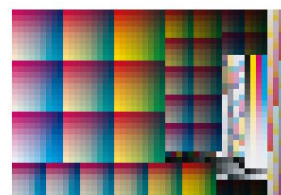
Sheet number: \_\_\_\_\_

Comment: \_\_\_\_\_

Measuremen FOGRA39L.txt

Standard: ISO 12647-2\_2007WB

Paper: glossy coated



Patch	CYAN	MAGENTA	YELLOW	BLACK	L	a	b
1552	20.0	10.0	100.0	20.0	67.51	-7.23	66.22
1553	40.0	10.0	100.0	20.0	61.01	-15.81	55.23
1554	70.0	10.0	100.0	20.0	50.79	-32.30	37.29
1555	100.0	10.0	100.0	20.0	41.70	-52.48	21.46
1556	0.0	40.0	0.0	100.0	13.47	5.36	-0.33
1557	40.0	40.0	0.0	100.0	11.69	2.34	-3.89
1558	100.0	40.0	0.0	100.0	9.07	-2.42	-9.24
1559	0.0	40.0	40.0	100.0	13.53	3.86	4.08
1560	40.0	40.0	40.0	100.0	12.02	0.60	0.90
1561	100.0	40.0	40.0	100.0	9.56	-5.30	-4.06
1562	0.0	40.0	100.0	100.0	13.77	1.57	9.96
1563	40.0	40.0	100.0	100.0	12.29	-1.71	7.03
1564	100.0	40.0	100.0	100.0	10.18	-7.58	2.68
1565	10.0	10.0	10.0	10.0	81.18	1.19	-0.76
1566	20.0	20.0	70.0	10.0	70.27	-0.93	41.71
1567	40.0	70.0	20.0	10.0	46.26	28.80	-11.72
1568	100.0	0.0	100.0	10.0	46.87	-61.12	25.48
1569	0.0	0.0	0.0	20.0	82.79	0.00	-1.67
1570	10.0	0.0	0.0	20.0	79.77	-2.67	-6.11
1571	20.0	0.0	0.0	20.0	76.53	-5.10	-10.12
1572	40.0	0.0	0.0	20.0	69.55	-11.09	-18.60
1573	70.0	0.0	0.0	20.0	58.19	-22.09	-31.91
1574	100.0	0.0	0.0	20.0	47.76	-33.61	-43.37
1575	0.0	0.0	10.0	20.0	82.10	-1.03	4.16
1576	10.0	0.0	10.0	20.0	79.13	-3.67	0.45
1577	20.0	0.0	10.0	20.0	75.98	-6.27	-3.65
1578	40.0	0.0	10.0	20.0	69.03	-12.62	-12.22
1579	70.0	0.0	10.0	20.0	57.64	-24.36	-25.86
1580	100.0	0.0	10.0	20.0	47.20	-36.94	-37.31
1581	0.0	0.0	20.0	20.0	81.42	-1.67	10.76
1582	10.0	0.0	20.0	20.0	78.40	-4.54	7.10
1583	20.0	0.0	20.0	20.0	75.30	-7.29	3.26
1584	40.0	0.0	20.0	20.0	68.35	-13.94	-5.49
1585	70.0	0.0	20.0	20.0	57.06	-26.46	-19.32
1586	100.0	0.0	20.0	20.0	46.66	-40.12	-31.07
1587	0.0	0.0	40.0	20.0	80.03	-3.38	26.02
1588	10.0	0.0	40.0	20.0	77.06	-6.06	22.09
1589	20.0	0.0	40.0	20.0	73.95	-9.28	18.13
1590	40.0	0.0	40.0	20.0	67.10	-16.57	9.18
1591	70.0	0.0	40.0	20.0	55.92	-30.45	-5.40
1592	100.0	0.0	40.0	20.0	45.72	-46.32	-17.39
1593	0.0	0.0	70.0	20.0	78.21	-4.73	53.21
1594	10.0	0.0	70.0	20.0	75.23	-7.90	48.92
1595	20.0	0.0	70.0	20.0	72.16	-11.12	44.49
1596	40.0	0.0	70.0	20.0	65.26	-18.97	34.38
1597	70.0	0.0	70.0	20.0	54.28	-34.80	18.03
1598	100.0	0.0	70.0	20.0	44.40	-53.08	4.16

Job number: Heidelberg Colortoolbox 10

Job name: IT8 7/4 R

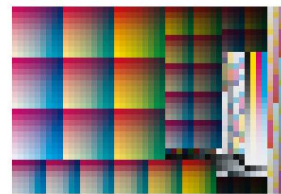
Sheet number: \_\_\_\_\_

Comment: \_\_\_\_\_

Measuremen FOGRA39L.txt

Standard: ISO 12647-2\_2007WB

Paper: glossy coated



Patch	CYAN	MAGENTA	YELLOW	BLACK	L	a	b
1599	0.0	0.0	100.0	20.0	76.88	-5.17	80.20
1600	10.0	0.0	100.0	20.0	73.84	-8.54	75.15
1601	20.0	0.0	100.0	20.0	70.70	-11.74	70.20
1602	40.0	0.0	100.0	20.0	64.01	-20.35	58.56
1603	70.0	0.0	100.0	20.0	53.27	-37.02	39.94
1604	100.0	0.0	100.0	20.0	43.77	-57.00	23.67
1605	0.0	0.0	0.0	100.0	16.00	-0.11	0.03
1606	40.0	0.0	0.0	100.0	13.71	-2.96	-4.03
1607	100.0	0.0	0.0	100.0	10.41	-8.17	-10.24
1608	0.0	0.0	40.0	100.0	15.59	-1.36	4.85
1609	40.0	0.0	40.0	100.0	13.71	-4.93	1.48
1610	100.0	0.0	40.0	100.0	10.63	-11.10	-4.22
1611	0.0	0.0	100.0	100.0	15.70	-3.01	11.65
1612	40.0	0.0	100.0	100.0	13.89	-6.84	8.53
1613	100.0	0.0	100.0	100.0	11.35	-12.98	3.63
1614	10.0	10.0	20.0	10.0	80.48	0.27	6.39
1615	20.0	40.0	0.0	10.0	65.96	16.94	-13.94
1616	40.0	70.0	40.0	10.0	45.52	26.83	-0.68
1617	100.0	100.0	0.0	10.0	22.65	20.46	-42.93

Job number: Heidelberg Colortoolbox 10

Job name: IT8 7/4 R

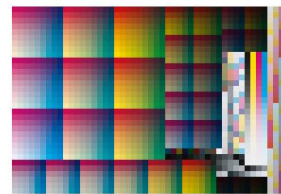
Sheet number: \_\_\_\_\_

Comment: \_\_\_\_\_

Measurement FOGRA39L.txt

Standard: ISO 12647-2\_2007WB

Paper: glossy coated



## Output

Output process

Output device/type

Device manufacturer

## Paper

Paper type

Paper brand name

## Color

Color sequence

Color name 1: 2: 3: 4:

Color name 5: 6: 7: 8:

Ink brand name

## Screening

Screening system

Dot shape default

Screening frequency default

Screening angle 1: -1.0 ° 2: -1.0 ° 3: -1.0 ° 4: -1.0 °

Screening angle 5: -1.0 ° 6: -1.0 ° 7: -1.0 ° 8: -1.0 °

## Process

Process standard

Plate process

Plate brand name