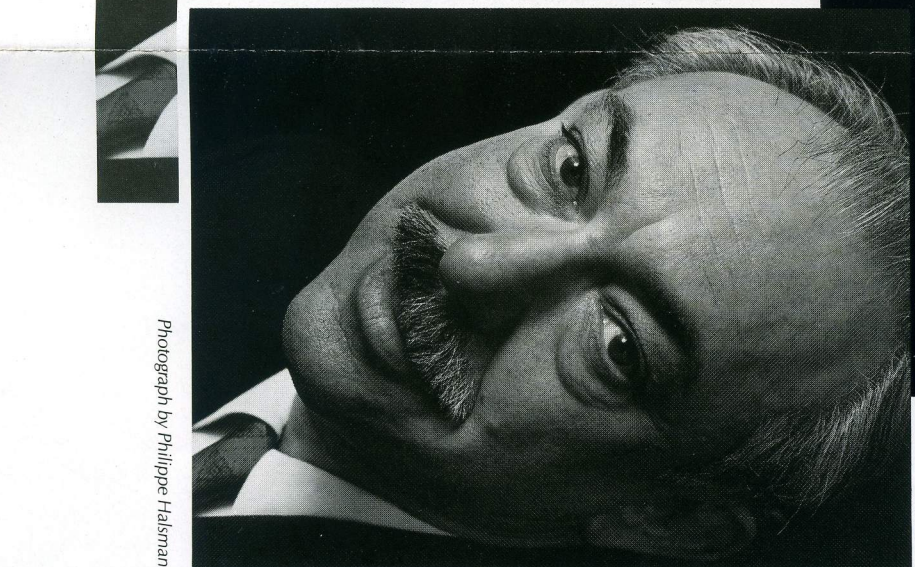
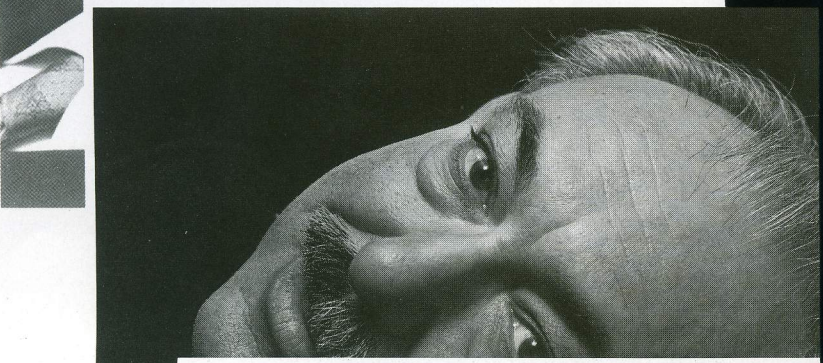
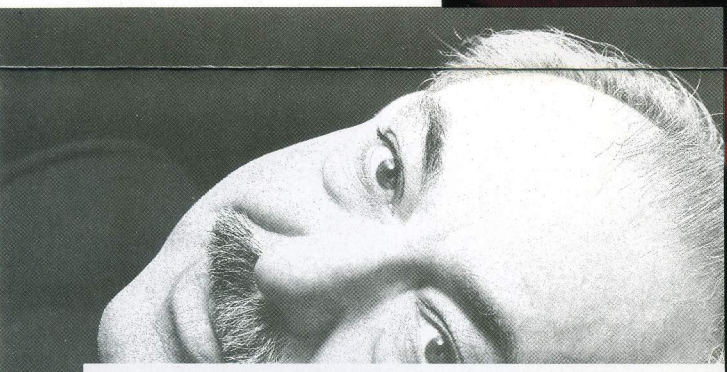




This portrait of Victor
Keppler is a graphic
demonstration of a Litho-
Krome Black Reproduc-
tion. The plate on left
carries shadow detail. The
plate in center carries high-
light and middle tones.
One printed over the other
combine to form the
completed picture on the
right. Note that the
completed picture carries
full detail in highlight,
middle tone, and shadow.



Photograph by Philippe Halsman.