

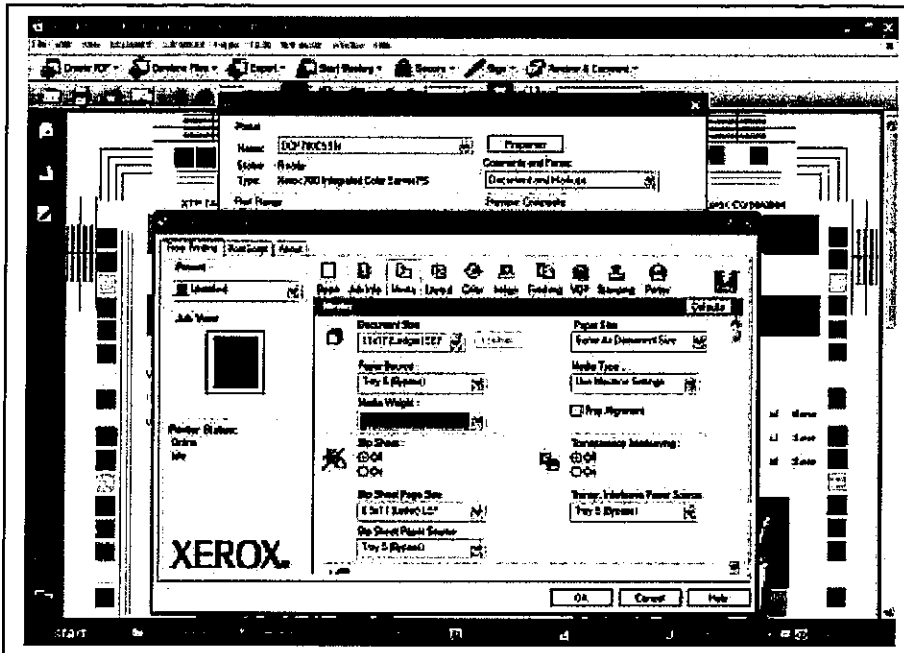
Overall Mottle on Coated and Heavyweight Media

Perform the Image Transfer adjustment as follows:

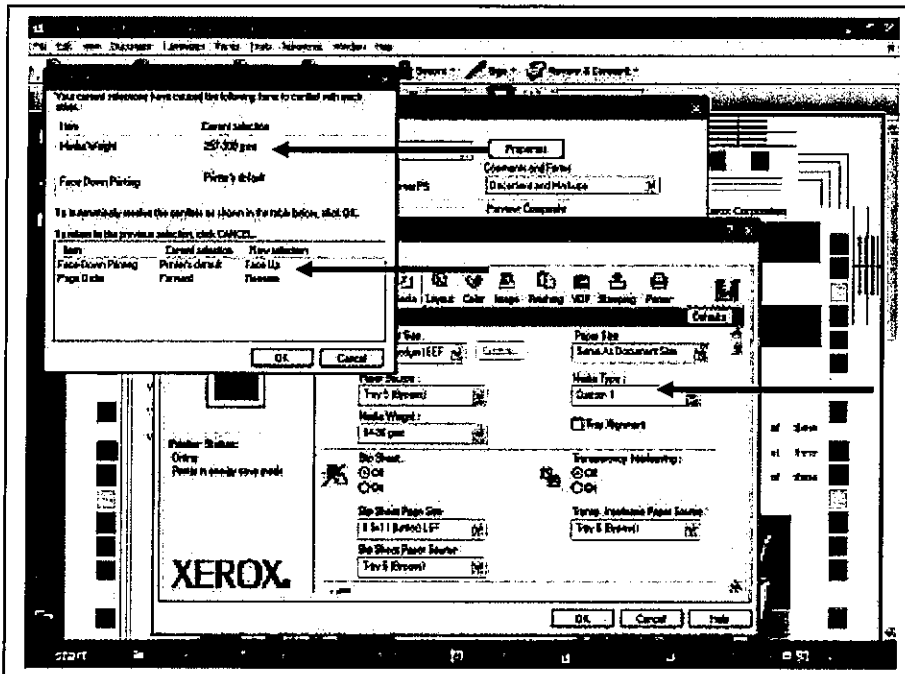
On The IOT

1. Enter Customer Tools
2. Select System Settings
3. In the Group Column, select Common Service Settings
4. In the Features Column, select Paper Tray Settings
5. Select the Custom Paper Settings icon
6. Select any Customer Paper (1-10) currently not in use
7. Select the Change Settings icon
8. Select Item # 1 (Name) in the Custom Paper screen
9. Select Change Settings icon
10. Modify the Name using the Keyboard to accurately describe the Paper Type being tested (for example, Hammer Mill Coated 220gsm) This will make it easier to select in the future
11. Select the Save icon
12. Select Item # 2 (Paper Type and Paper Weight)
13. Select Change Settings icon
14. Select the correct Paper Type and Paper Weight which accurately describes the paper stock being tested
15. Select the Save icon
16. Select Item # 6 (Adjust Image Transfer)
17. Select Change Setting
18. Select the manual adjustment icon
19. Select side 1 or side 2 whichever side you are having the problem on
20. Move the transfer % up or down to change the transfer %
21. Select the Save icon to return to the Adjust Image Transfer screen
22. Select Save
23. Select the Save icon
24. Select the Close icon (twice)
25. Load the media into the paper tray you modified
26. When the tray raises select the custom setting you named using this process and select confirm
27. Run test prints (See following pages for DFE printing)
28. If the test prints are good inform the customer to use this custom setting whenever they use this media type
29. If the copies are not good continue the Image Transfer adjustment above until you receive an acceptable copy.
30. Note do not increase/decrease more than 5% at a time

Printing on 700DCP-Bustle Controller



Stocks <220gsm
Selecting the "Paper Source" and using default settings as below will work for stocks <220gsm, capable of printing "facedown". If the stock is >220gsm, see below



Stocks >220gsm
For stocks >220gsm, jamming is more probable if the output is delivered facedown. Make the selections as seen below. Again choose the "Paper Source", for stocks >220gsm, it will be either Tray 5 or OHCF tray. From the media type choose the appropriate "Custom Paper #". This will prompt a conflict resolution to select a "Media Weight". Once you select a weight >220gsm, another conflict resolution window will appear to select "Face Up" and "Reverse" printing.

Note; The names of the custom profiles will not show in the "Media Type" selection