

Print from Adobe Acrobat to the **Plotter from Windows:**

36 inch, coated, roll paper, maximum width in one dimension is 36 inches.

To print:

Start at **File/Print.**

Name: **Plotter**

Make Changes appropriate for your Document!

Click **Properties** to select your paper size and color management policies:

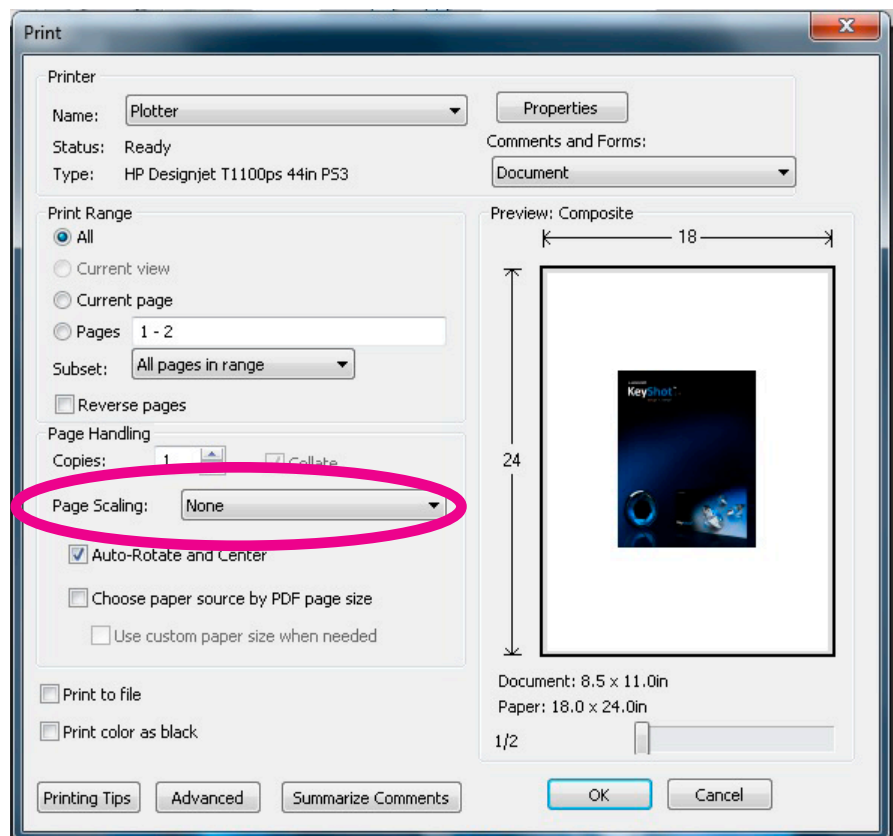
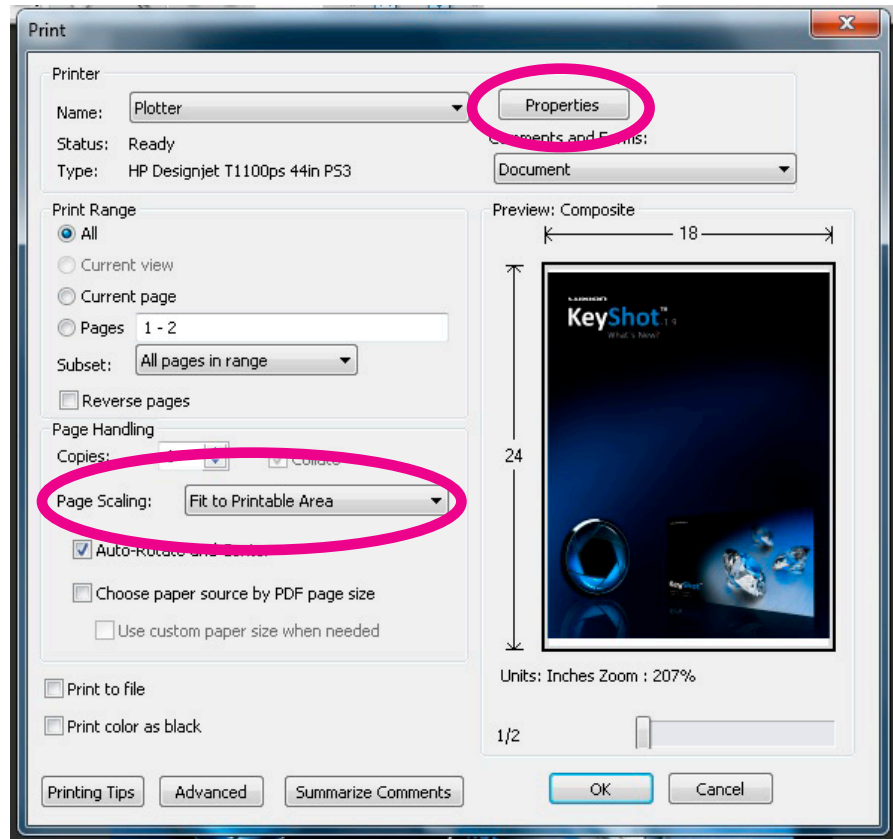
Choose your pages

Choose Page Scaling, Copies

Make sure the preview accurately represents what you intend to print.

*Notice the difference between **Page Scaling: Fit to Printable Area** and **None**

Set **Page Scaling** appropriately.



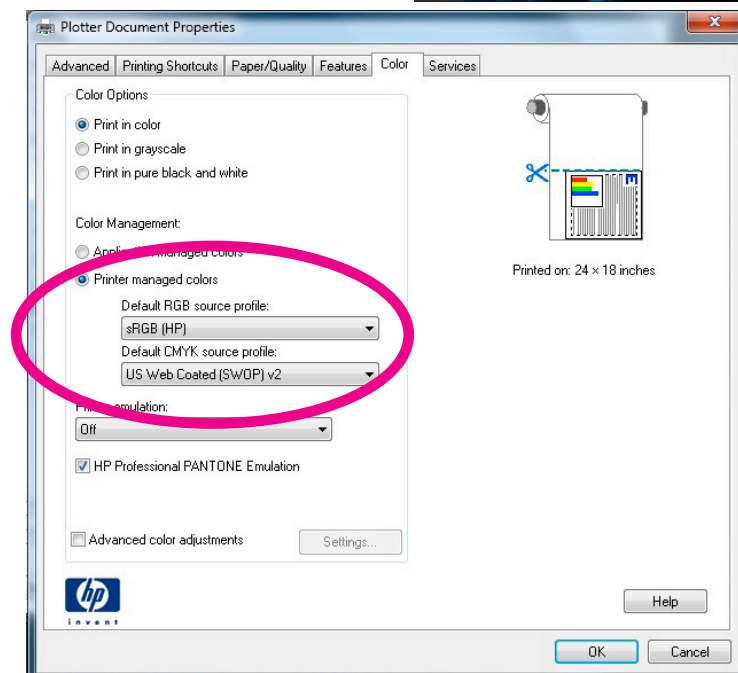
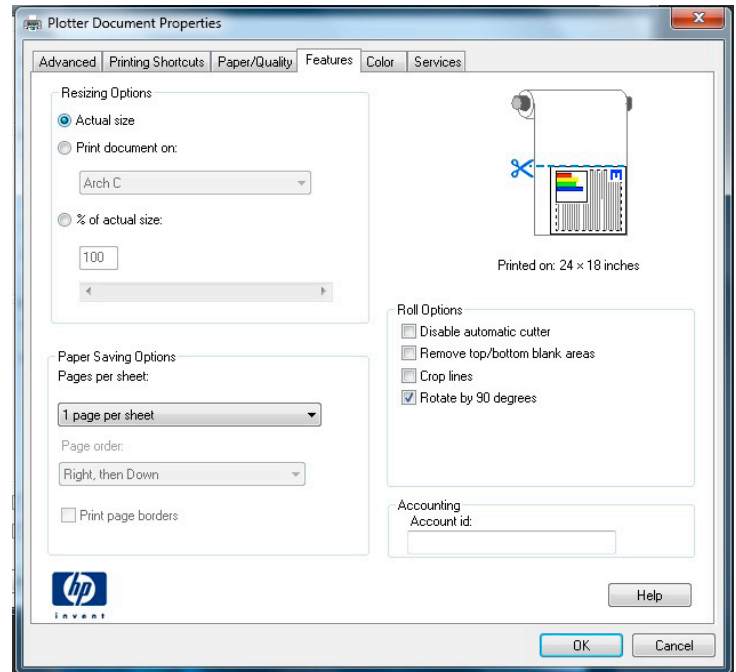
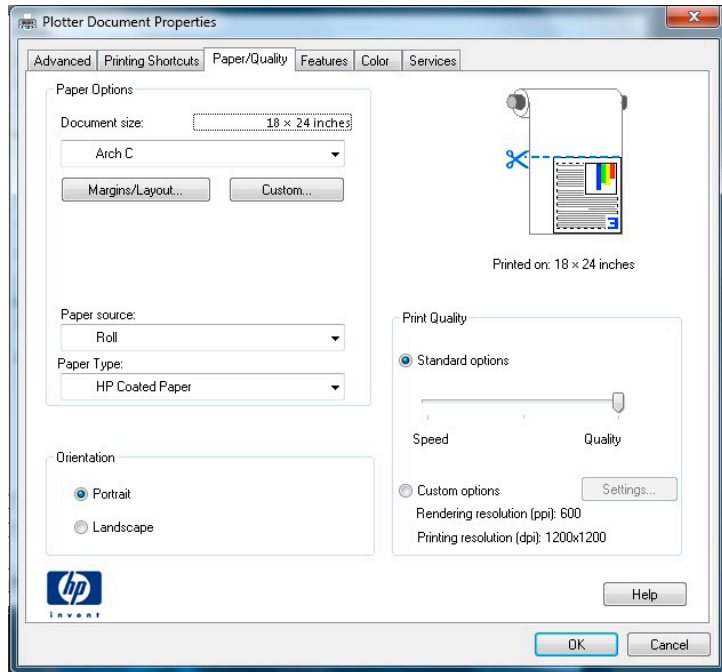
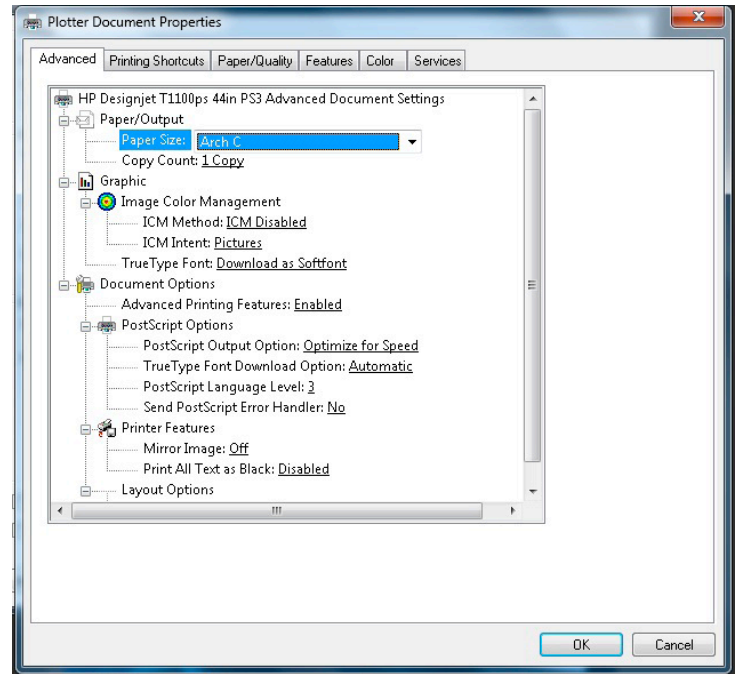
Start at the **Advanced** Tab on the top left.

Make changes appropriate for your job.

Choose you paper size, make sure to duplicate the other settings.

Click the other tabs at the top to set your other parameters, especially **Paper Source, Paper Type, Print Quality, Page Orientation, Roll Options, etc.**

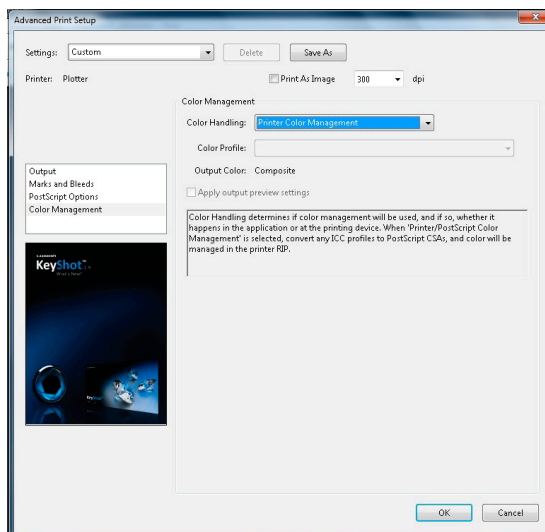
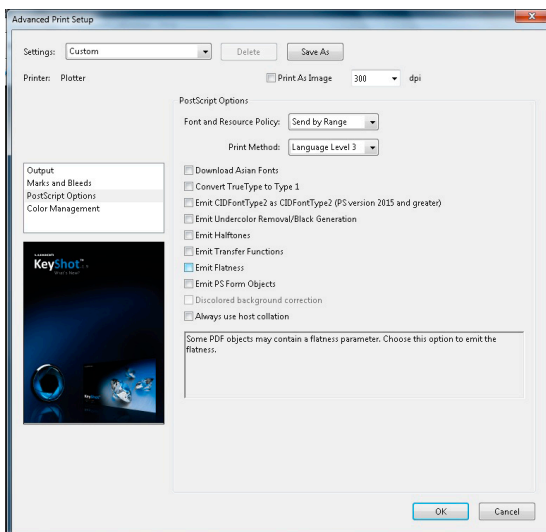
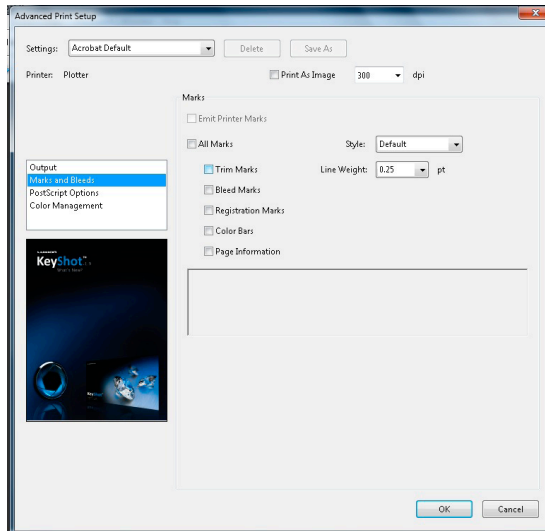
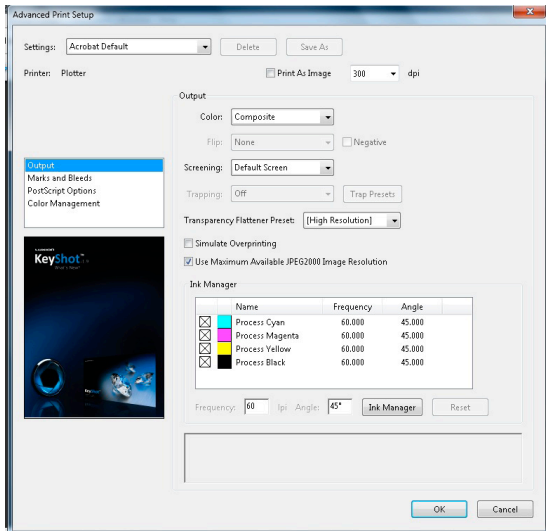
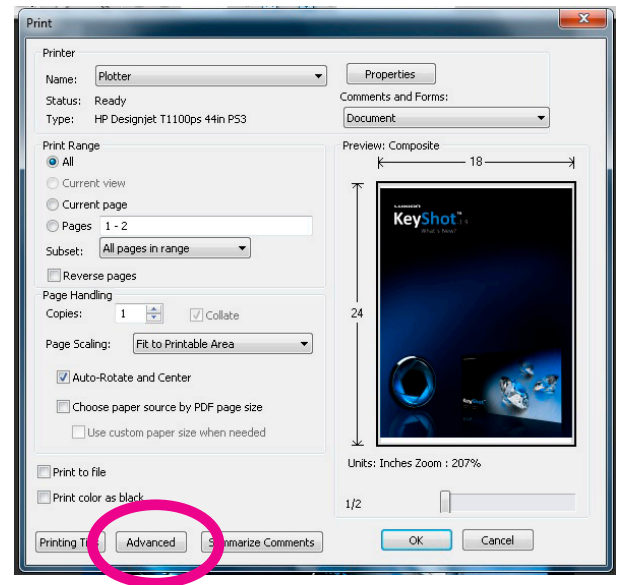
The **Color** Tab is critical in determining your output color accuracy. **Always choose Printer Managed Colors!**



After clicking **OK**, you are back here:

Click the **Advanced** button.

Continue duplicating the settings below or choose the options for your specific needs.



***Make sure Color Handling is set to Printer Color Management!**