




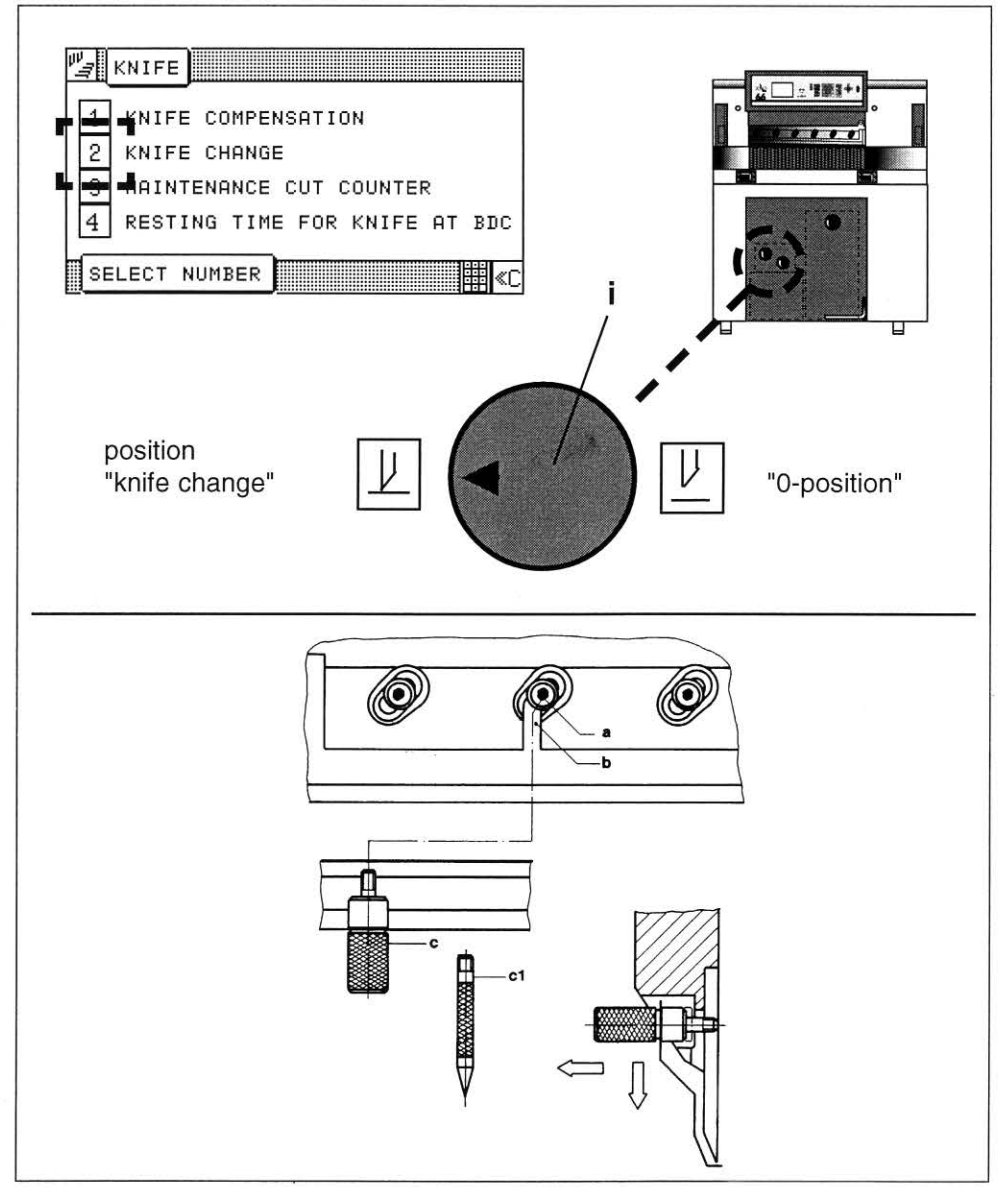
The knife change should only be carried out by specially trained personnel



Tools required: 1 Knife wrench
1 Knife guard
2 Knife holders

Removing the knife

1. Select display "Main menu" (Function survey) with key .
Make selection "3 Knife".
Select "2 Knife change"
2. Bring turning knob (i), located beneath the front table, to position "Knife change" (Anti-clockwise)
3. Press both cut buttons and keep them pressed until knife bar stops automatically at the lower position
4. Remove knife screw at the very left-hand side; turn knob (i) to "0 - position" < knife bars moves upward >
5. Loosen both knife screws (a) at the two knife bar slots (b).
Screw both handles of the knife guard (c) into the now accessible bolt holes
6. Remove the remaining knife screws (knife is fixed to the knife bar by the two handles)
7. Pull knife guard forward by means of the two handles (de-activate clamping) and pull the knife downward, out of the knife bar.
8. **Deposit knife in knife box!!**
Remove knife guard*



* **HANDLE THE KNIFE WITH UTMOST CARE!
WHEN TRANSPORTING THE KNIFE WITHOUT
KNIFE BOX, USE ALWAYS THE KNIFE GUARD.**

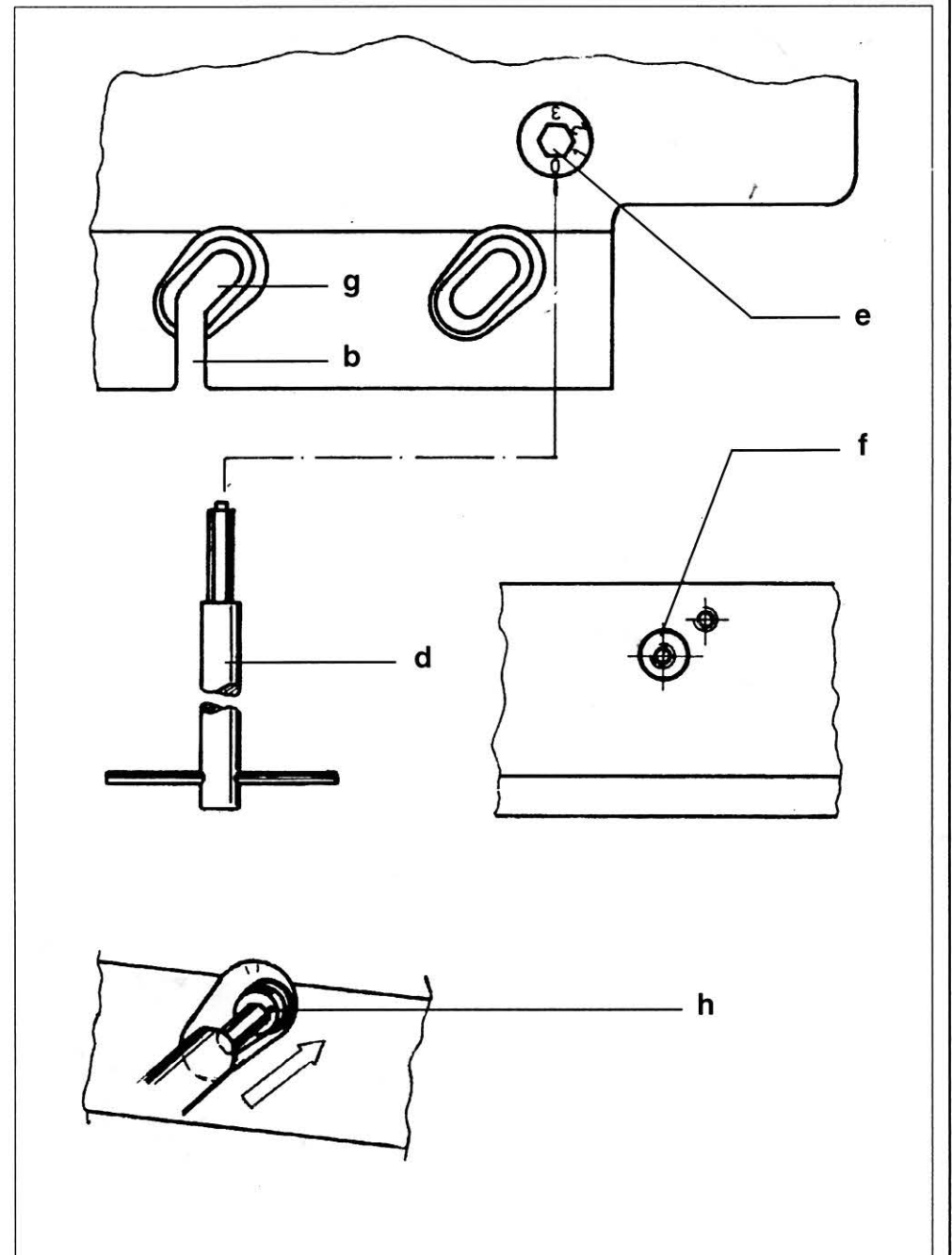
Knife Change

Mounting the knife

1. Replace cutting stick or turn same over (see page K6 - 5)
2. Turn adjusting cam (e) to the "0 - position" by means of the knife wrench
3. Screw knife handles (c1) into the black bordered bolt holes (f) of the new knife
4. Take knife out of the knife box
5. Remove knife handles (c1) and mount knife guard (c)
6. Insert the knife into the knife bar slots (b) and lift it up into the elongated holes (g; Attention! Mind the clamping resistance of the knife guard)
7. ~~Release knife guard (knife is clamped to knife bar)~~
8. Screw all knife screws (except screw at the very left-hand side) slightly into the lower bolt holes*; **do not fasten them!**
9. Remove knife guard
10. Slightly screw-in the remaining screws, **but do not fasten them!**
11. Push the knife at the center screw (h) up to its topmost position by means of the knife wrench and fasten it

Continuation next page

* See also "Knife adjustment", page K6 - 4, item 3



Knife Change

Knife adjustment

1. Bring turning knob (i), located beneath the front table, to position "Knife change".
2. Press both cut buttons and keep them pressed until knife bar stops automatically at the lower position.
3. Loosen center knife bolt (knife should now drop down to the cutting stick. If necessary use the knife wrench to push down the knife against the cutting stick).
Attention!
In case the knife does not reach the cutting stick:
Screw the knife bolts in the **upper** bore-holes of the knife.
4. Screw-in knife screw at the very left-hand side.
5. **Tighten up all knife bolts!**
6. Bring turning knob (i) back to "0 - position" (knife bar should return automatically to upper resting position).
7. ~~Insert knife screw at the very right-hand side and tighten it.~~
8. Move adjusting can (e) to position 1.
9. Finish knife change by pressing key 1.

Adjustment of knife pre-tension

If hard material is to be cut (such as cardboard) it may be necessary to increase the pre-tension of the knife if the bottom sheet has not been cut through.

Adjusting the knife:

Tool needed: Knife wrench.

Move adjusting cam (e) on the knife bar to position 1 - 3*

* required position depending on the material to be cut should be found by test cuts.

