



## Print Media Academy

### What's New in Prinect 2010 Workflow

Prinect Prepress Manager 10.0

Prinect Remote Access 10.0

Prinect Pressroom Manager 10.0

Prinect Signa Station v10.0

Prinect MetaDimension v10.0

Prinect PDF Toolbox v10



Print Media Academy

## Table of Contents

	Page
<b>What's New in Prinect Prepress Manager 2010</b>	<b>1</b>
<b>What's New in Prinect Remote Access 2010</b>	<b>7</b>
<b>What's New in Prinect Pressroom Manager 2010</b>	<b>11</b>
<b>What's New in Prinect Signa Station 2010</b>	<b>15</b>
<b>What's New in Prinect MetaDimension 2010</b>	<b>19</b>
<b>What's New in Prinect PDF Toolbox 2010</b>	<b>21</b>

**Note:** Click on each product name for a link to its section. Click on the Print Media Academy logo on each page to return to the Table of Contents.

### **IMPORTANT NOTICE:**

The information in this document is confidential and proprietary to Heidelberg Druckmaschinen AG and may be legally privileged.

Any review, printing, copying, use or distribution of this document is prohibited without the written allowance of Heidelberg Druckmaschinen AG and may be a criminal offense. If you have received this document in error, please notify Heidelberg Druckmaschinen AG immediately.



## Prinect 2010 – What's New in Prepress Manager

### General Information

- Prinect Cockpit is supported on the following operating systems:  
Windows 2003 Server, Windows 2003 R2 Server, Windows 2008 64-bit, Windows 2008 R2 64-bit, Windows 7 Pro or Ultimate, Windows XP Professional 32-bit, Mac OS X 10.5.x and Mac OS X 10.6.x.
- Cockpit is no longer supported on Windows Vista or on Mac OS X 10.4.x (Tiger).
- The Adobe Normalizer Library used is now comparable with Acrobat Distiller 9.
- The PitStop Profiles will be processed with an Enfocus Library comparable to PitStop 9.
- Version 10 software components will require new license keys.

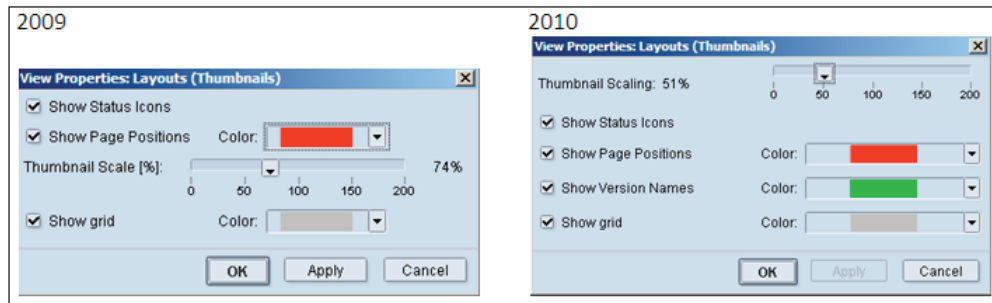
### New Features in the User Interface

**Job Assistant to create new job** – A wizard makes it simple and straight forward to enter data pertaining to the job you are creating.

**New Job Status (New and Modified) for MIS jobs** – Allows Cockpit operator to easily see when a new job has been added by MIS and know when the job has been verified. Allows change orders from MIS to take place unattended right up until production starts.



**New View for Pages and Page Lists in View Properties** – The dialog window has been rearranged, and the capability to show version names has been added.



## New additions in Resources

**New Dynamic Marks** – You are now able to add information about **plate number**, **sheet description**, **folding sheet ID**, and **color separations side-by-side**. Additional options for paper include **paper grade (ISO)**, **paper grammage**, **paper name**, **paper size**, and **paper thickness**. For packaging customers **Article Name** and **Item Number** have been added.

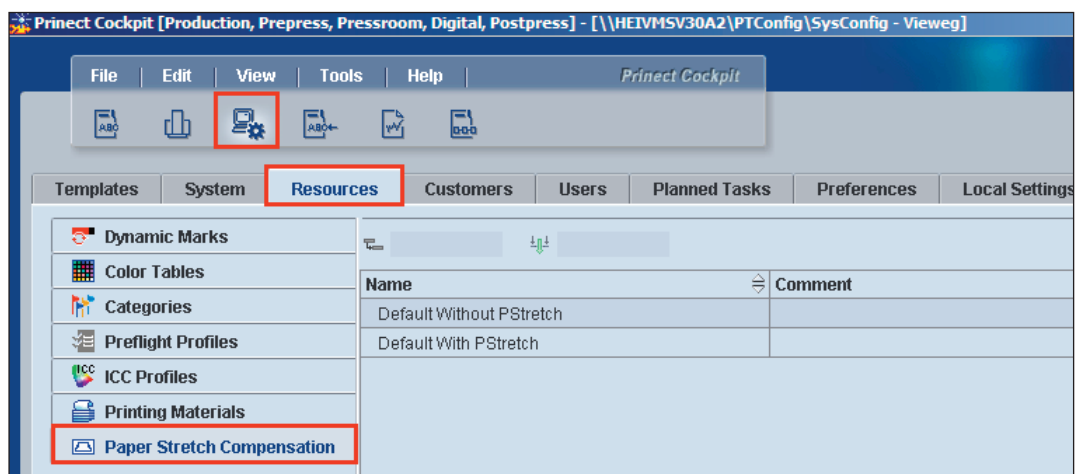
**New Capability to customize certain marks by truncating from 0 to 9 characters.**

Example:

[\$CustomerName:(3,0)] = will cut the first 3 characters of the customer name

[\$CustomerName:(0,4)] = will cut the last 4 characters of the customer name

**Addition of Paper Stretch Compensation Resources** – You can now define customized Paper Stretch Compensation Templates directly within Cockpit. Save them as resources, then apply them in the appropriate Imposition Output Sequence Template.



## New in Job Settings

Properties Colors Materials Printing Process

Assignment of job colors to mark colors

☐ Automatically per Surface

☒ User-defined: ☒ Global ☐ in layout

☒ Allow special colors for BCMY

"Process" target: CMYK..., else L\*a\*b\*

"Output" target: CMYK..., else L\*a\*b\*

☐ Take color definitions for new colors from color tables

☒ Autoresolve Naming Conflicts for New Colors

☐ Submit Print Order to Press

☐ Output empty separations

Product Colors

Color List: All Colors

Color	Name	Marks	Target	Source	C	M	Y	K
Black	Black	B	Output	Job	0	0	0	100
Cyan	Cyan	C	Output	Job	100	0	0	0
Magenta	Magenta	M	Output	Job	0	100	0	0
Yellow	Yellow	Y	Output	Job	0	0	100	0
PANTONE 1505 C	PANTONE 1505 C	X	Output	Job	0	42	77	0
PANTONE 1788 C	PANTONE 1788 C	Z	Output	Job	0	84	88	0

**Assignment of Job Colors to Mark Colors** – Has been enhanced to allow for user defined assignment of marks on a global (per job) or per layout basis.

**Output of empty separations** – If this new option is enabled, separations that have no content will be output as well.

**Autoresolve naming conflicts** – This should normally be checked on. It allows the resolution of colors with multiple names; i.e. Green, green, GREEN. This can also be enabled as a Preference in Administration > Preferences so that it will be active for every job.

## Miscellaneous Changes in the GUI

**Print as PDF** – This option is a quick method to print out information about pages or page lists.

Pages

Job Number: M10-00070 Job Name: BookletforPB

Name	Page Positions	Trim Box Offset	Trim Box	Modif
36PagesFastOutput.pdf - 01	1:PL_Lay	10.6 / 10.6 mm (Trim Box)	210.0 / 297.0 mm	Mar 2
36PagesFastOutput.pdf - 02	2:PL_Lay	10.6 / 10.6 mm (Trim Box)	210.0 / 297.0 mm	Mar 2
36PagesFastOutput.pdf - 03	3:PL_Lay			
36PagesFastOutput.pdf - 04	4:PL_Lay			
36PagesFastOutput.pdf - 05	5:PL_Lay			
36PagesFastOutput.pdf - 06	6:PL_Lay			
36PagesFastOutput.pdf - 07	7:PL_Lay			
36PagesFastOutput.pdf - 08	8:PL_Lay			
36PagesFastOutput.pdf - 09	9:PL_Lay			
36PagesFastOutput.pdf - 10	10:PL_Lay			
36PagesFastOutput.pdf - 11	11:PL_Lay			
36PagesFastOutput.pdf - 12	12:PL_Lay			
36PagesFastOutput.pdf - 13	13:PL_Lay	10.6 / 10.6 mm (Trim Box)	210.0 / 297.0 mm	Mar 2

Assign Count

Assign Count: Assign

Open...

Browse...

**Print to PDF**

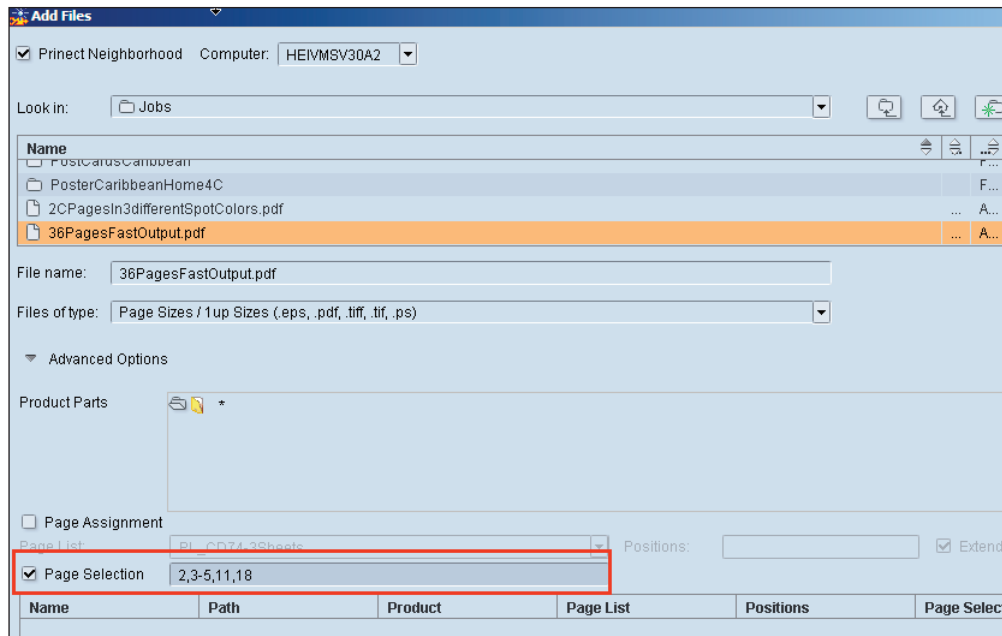
Continue...

Submit...

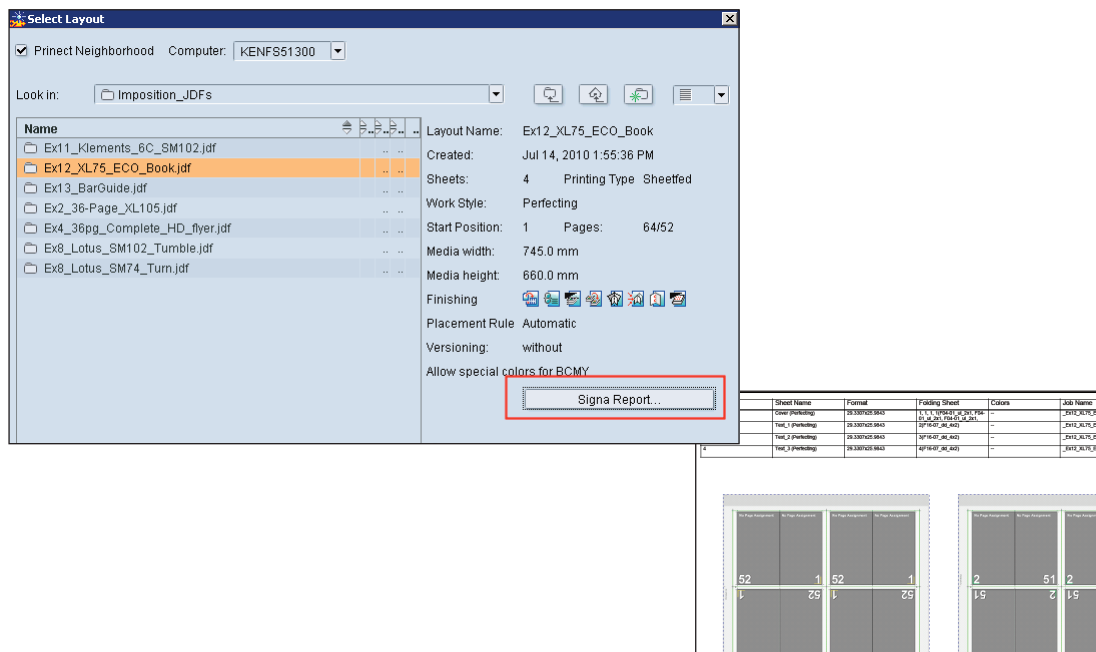
Assign



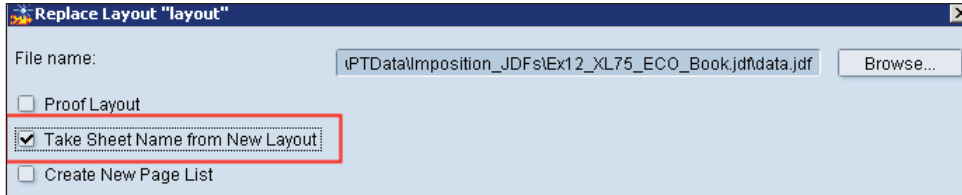
**Add Files > Page Selection** – This new feature allows you to add selective pages from a source input file.



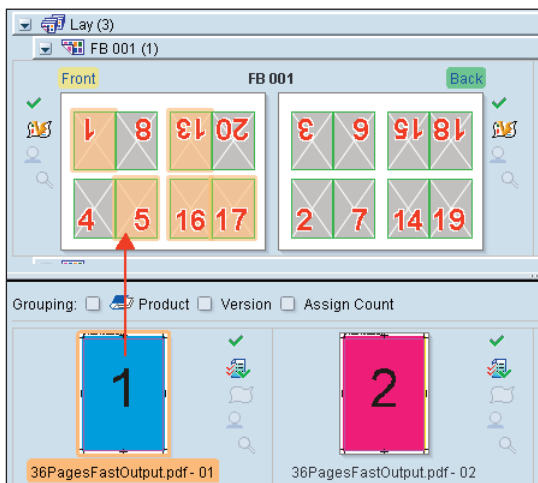
**Import Layout > Show Signa Report** – As part of the Import Layout process, you can now open the Signa Report from within the dialog window. This report contains information about the layout, as well as a thumbnail view of the press sheet.



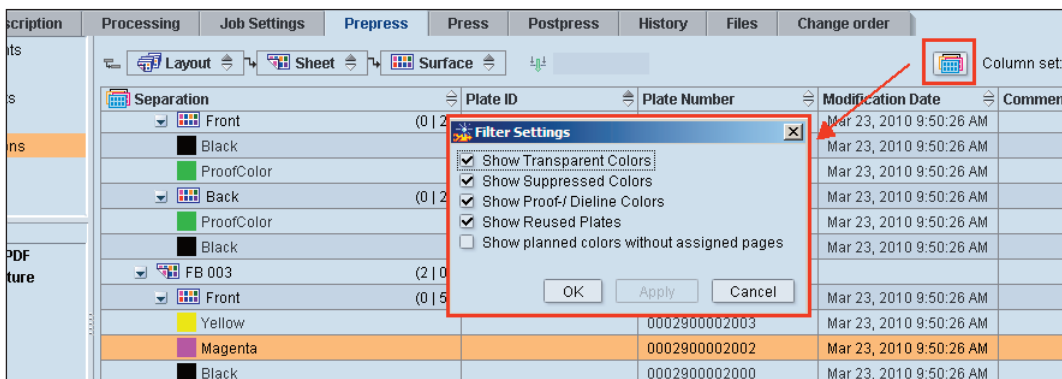
**Replace Layout > Take Sheet Name from New Layout** – When you choose to replace a layout, you can now also choose to take the sheet name from the new layout.



**Assign a Page to multiple positions by drag and drop** – From the layouts view (or the Page List View) use Assignment Presentation to drag and drop assign a page to multiple positions in the layout.



**Separation View Filter** – This new filter button allows you to easily verify the number of plates to be made. Choose to **view Transparent, Suppressed or Dieline colors**. Also show **Reused Plates**, or **Planned Colors** without assigned pages.



## New Features in the Sequences and Engines

**Qualify Sequence** – The Split Document function now offers the chance to split documents based on size, or on the number of pages.

**Preflight Changes** – Enhancements have been incorporated to support and check for the requirements of the PDF-X/4 standard.

Under **Images**, there is a new parameter to check for **Not enough image data** for the RIP. Based on the image height, width and color space, the expected number of bytes is calculated. If the number does not match what is present, a warning can be issued. If not corrected, this would most likely cause an error when outputting. Note that this check is time consuming as it must check each image in detail.

Under **Fonts**, additional checks have been added regarding **incorrectly embedded fonts**; characters that are missing from the embedding, or have been defined multiple times.

Under **Colors**, additional checks have been added to comply with the **PDF/X-4 standard**. Also provides check for **spot color none**, check for **individual colors**, and check for several additional **overprinting states**; i.e. CMYK White, 0% Spot, and CMYK with ICC profile.

The **Assemble PDF / Send Assembled PDF** sequences also provide some new options.

An option to send **with or without transparent objects**.

An option to send **with or without dieline** colors.

An option to **preserve the logical page numbering** of the PDF file.

Send Assembled PDF can now be sent **without an attached Acceptance Form**.

**Imposition Output sequence** – Provides for a more flexible assignment of screen angles for spot colors. Specify the angles, and they will be assigned cyclically to spot colors in the job.





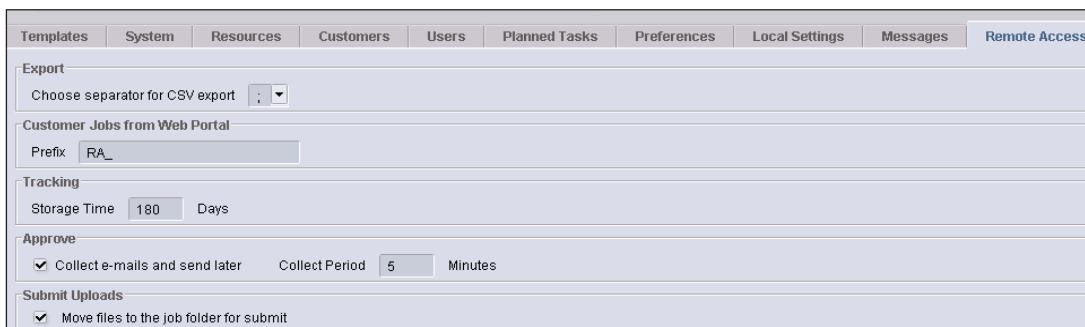
## Prinect 2010 – What's New in Remote Access

### Cockpit Enhancements for Remote Access

Several enhancements have been made in Cockpit relating to Remote Access operation.

Under **Administration > Remote Access** these new functions have been added:

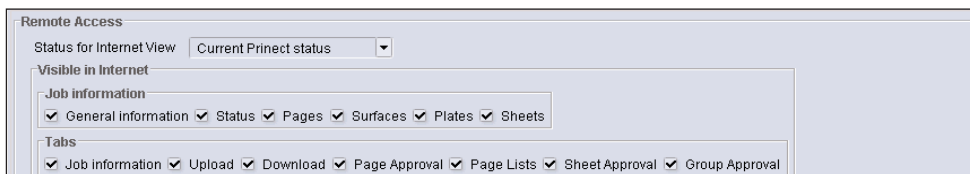
**Customer Jobs from Web Portal** – Here you can specify a prefix for these prejobs created through the Web UI or coming from Direct Access. Enter your preferred prefix; i.e. RA\_. If left blank, the jobs will have no prefix.



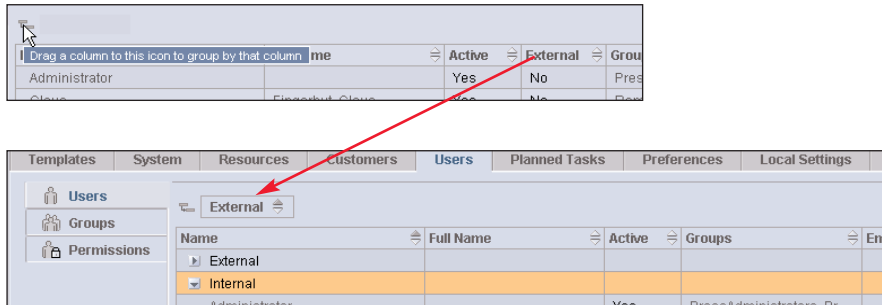
**Tracking** – You can now set this storage time duration to a number of days. This enables you to keep the list shorter and therefore output the list much faster.

**Approve** – offers you the opportunity to collect emails over a defined period of minutes and then send only one email instead of sending an email for each page when approved. If left unchecked, an email will be sent for each page as it is approved.

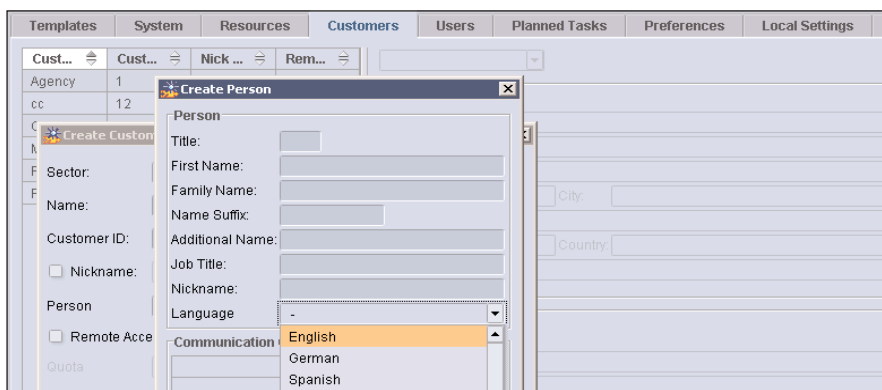
Under **Remote Access**, you can decide globally what information Print Buyers are able to see in the Web UI. You are able to override these settings on a per-job basis; however, if the global setting is not enabled the feature will not be available in the Web UI at all.






Under **Administration > Users**, the **internal and external users** are now shown in separate columns instead of by means of the radio buttons. You can easily use the filter function to search for all internal or all external users.

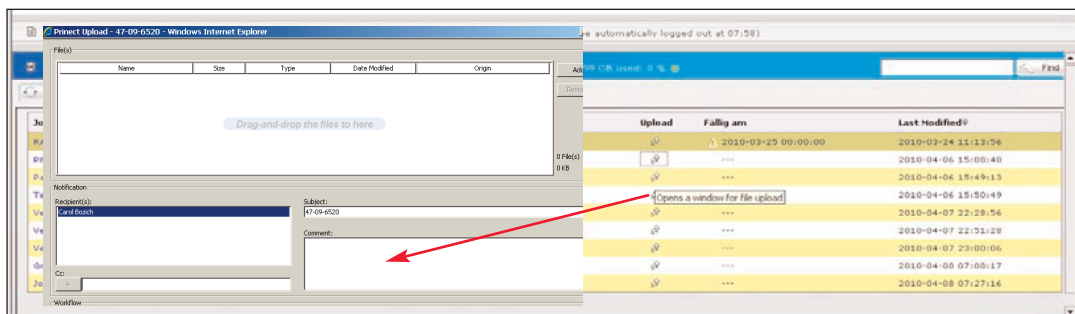


Under **Administration > Customers**, the customer configuration has been simplified. You can now select the **preferred language** in the same window where you define the Person.

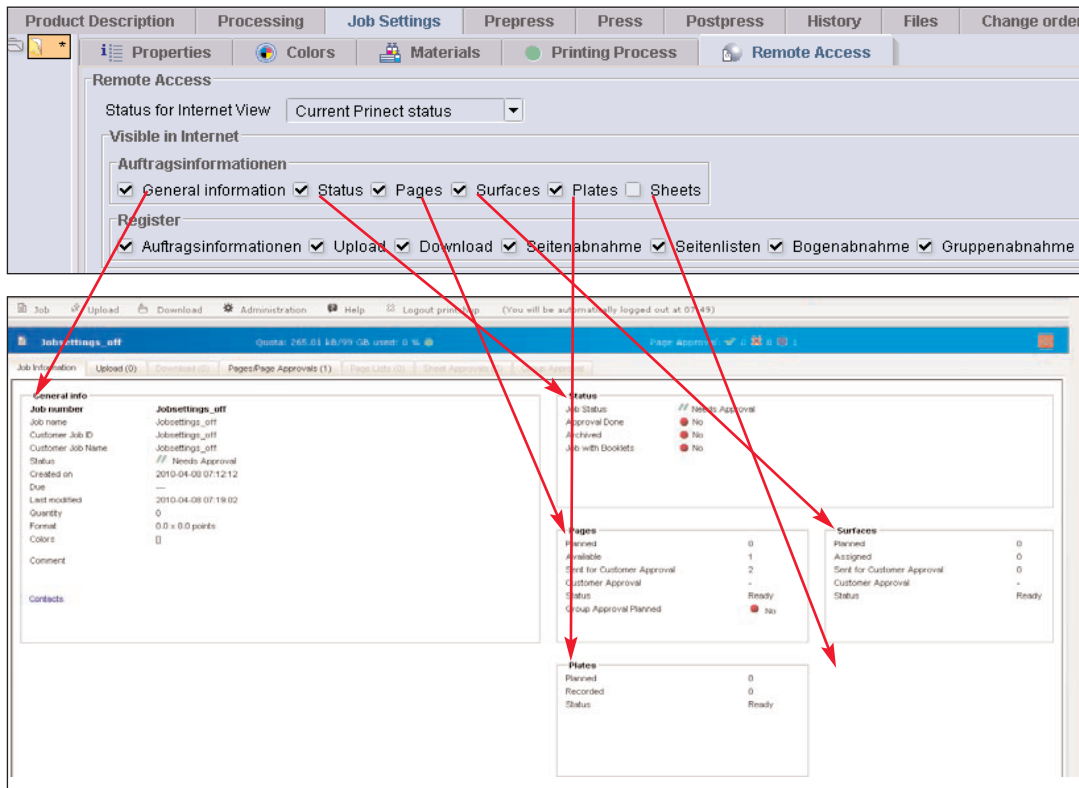


## Enhancements in the Web User Interface

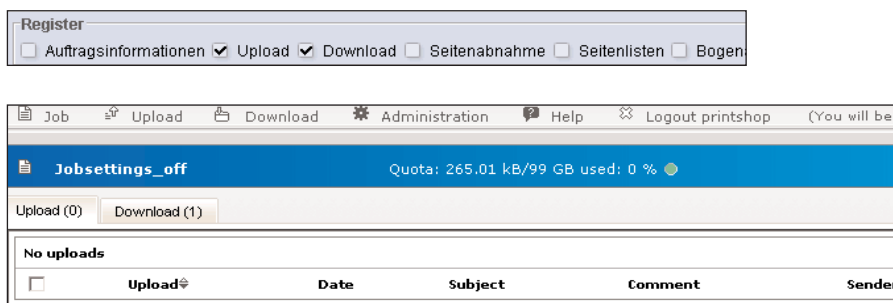
**Job List** – The job list is now more informative; offering additional hints and warnings. If a job approval is due, a warning triangle  will be displayed. It will also display if expected uploads are still missing. There is an available icon  in the job list to directly open the Upload Applet.



**Customized Job Information** – As already mentioned, by using the new settings in Cockpit, what job information that's visible in the WebUI is controllable. Choose what information you do or don't want the print buyer to be able to see.

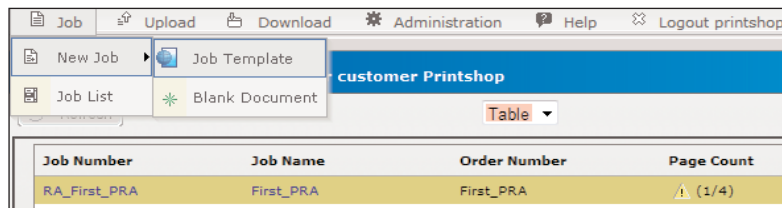


Likewise, in the same section in Cockpit you can use the **Register options** to control which tabs are available in the Web UI. In the example below, we have allowed only the Upload and Download tabs to be displayed to simulate the operation of an FTP server.

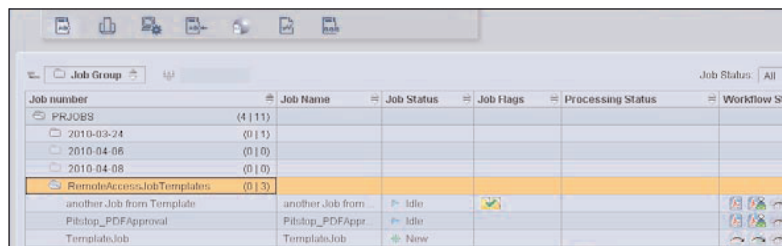


## Operational Enhancements for Remote Access

Version 10 has a new function that allows **jobs** to be **created from a Job Template**. Jobs stored in the Remote Access Job Template Group without a customer assignment can be used by any customer. Jobs stored with customer assignment will only be offered to that customer to be used as a template.



The folder **Remote Access Job Templates** is automatically created in Cockpit to store available Job Templates.



**Group Approvals** – It is now possible to have multiple users required for approval. Only when all assigned members have given the approval will the workflow process continue. The group approval can be applied to the print buyer or activated on a per-job basis. Approval members are assigned either in Cockpit to the print buyer, or in the Web UI can be invited or de-invited on a per-job basis. An appropriate email is sent to each approver.

The Approval itself can be done in Cockpit from the Job Settings > Remote Access tab; or in the Web UI

## Pixel Proof Viewer Enhancements

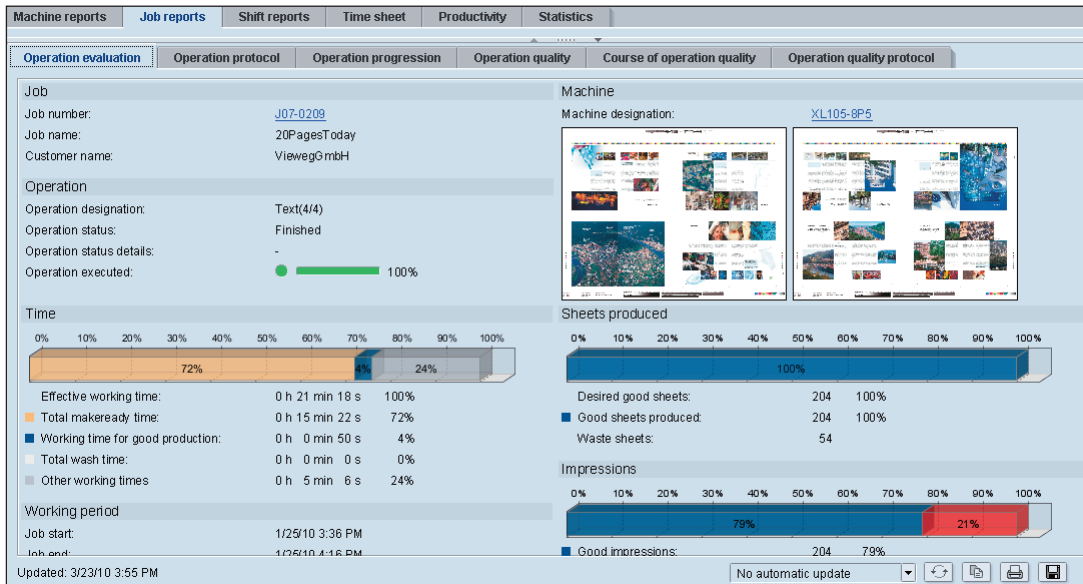
The Pixel Proof Viewer has been improved with a better annotation tool, as well as the ability to approve all pages. When opening multiple pages, the approval window now always stays on top making the approval process more efficient. If all pages have not been checked, a warning dialog will be shown.



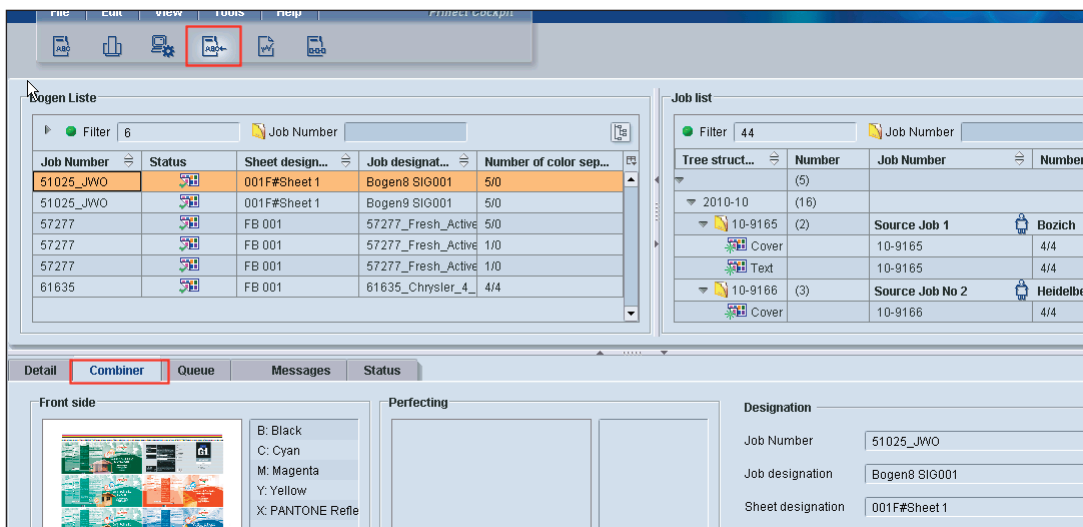
## Prinect 2010 – What's New in Pressroom Manager

### General Information

**Bar Graphs instead of Pie Charts** – Information in Analyze Point is now displayed in easy to read Bar Graphs instead of the formerly used pie charts. The former Operation status has been combined with the Operation Evaluation tab.



**New Job Combiner** – The Job Combiner tab allows a user to combine separations into one file, to combine fronts and backs into one file, to separate fronts and backs, to combine a varnish separation, or to combine any combination of separations necessary.



**Edit Sheet Data** – Easily make edits as necessary to **job number, job designation, sheet designation**. Also **allocate or re-allocate colors** if necessary.

**Designation**

Job Number: 57277

Job designation: 57277\_Fresh\_Active\_Box\_5\_0

Sheet designation: FB 001

Customer name:

Creation date: 7/5/2007 5:54 PM

**Front side**

Printing unit	Color designation
B	Black
C	Cyan
M	Magenta
Y	Yellow
X	MFX_Silber
Z	
U	

**Perfecting**

Printing unit	Color designation
B	
C	
M	
Y	
X	
Z	
U	

**Separate front and back operations for sheetwise jobs** – With 2010, all sheetwise jobs will be shown as two separate operations, both in the scheduler and at the press. This will allow for more flexibility; such as running sides on a different press, or scheduling sides at different times.

**Force Front option for non perfecting presses** – This can now be specified in the Press configuration in Cockpit and will allow for more flexibility at the press console.

**PPF Out for HD and Komori Presses** – For older Heidelberg press consoles and for certain Komori presses, this allows Pressroom Manager to deliver a .ppf file to the press; similar to the operation with Prepress Interface.

**Pallet Sheet** – New capability to initiate the print out of pallet labels from the Press Console or from a Data Terminal. Prints to a Windows printer configured on the Pressroom Manager server.

Palettenzettel

Auftragsnummer: J09-0015

Auftragsname: Test Brochure for overs

Druckbogen: Text\_2(4/4)

Palette Nr. 2 mit 0 Bögen

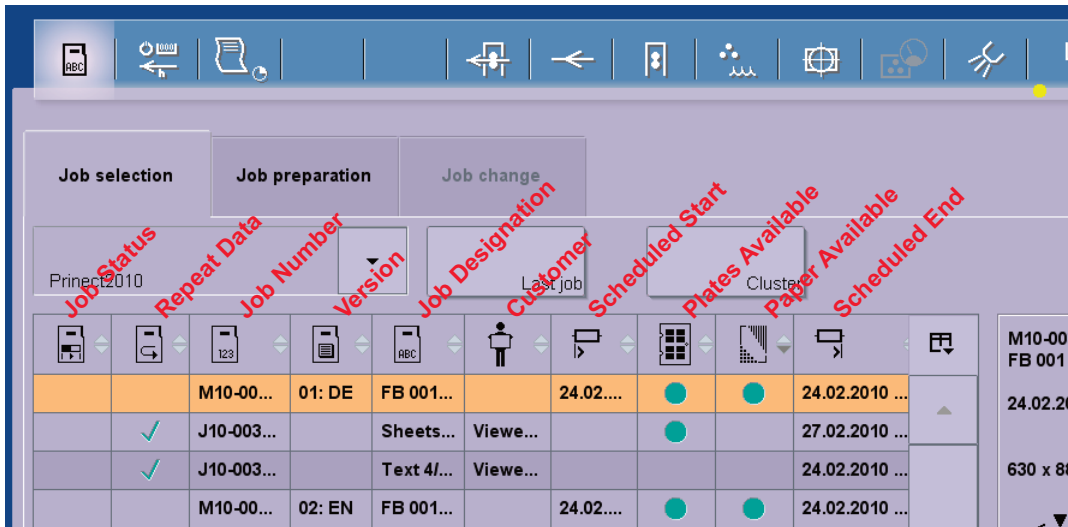
Kunde: Heidelberg GB Ltd.  
69-76 High Street  
TW8 0AA Brentford  
Great Britain

Lieferadresse: Heidelberg GB Ltd.  
69-76 High Street  
TW8 0AA Brentford  
Great Britain

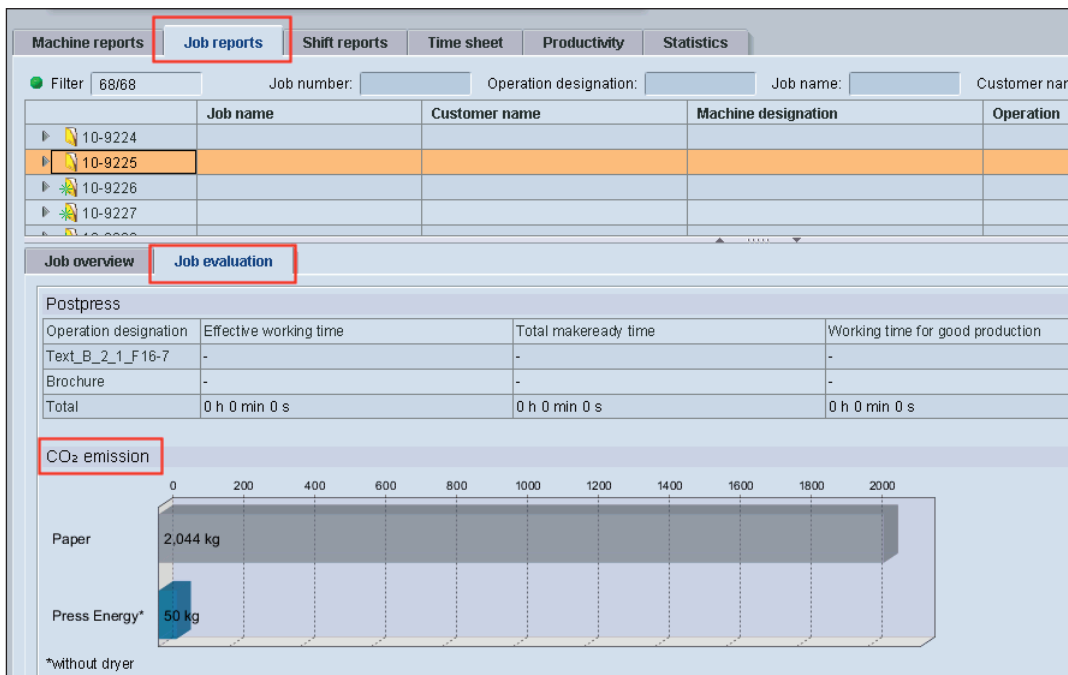
Auflage: 1 020 Datum: 04.03.10 14:56



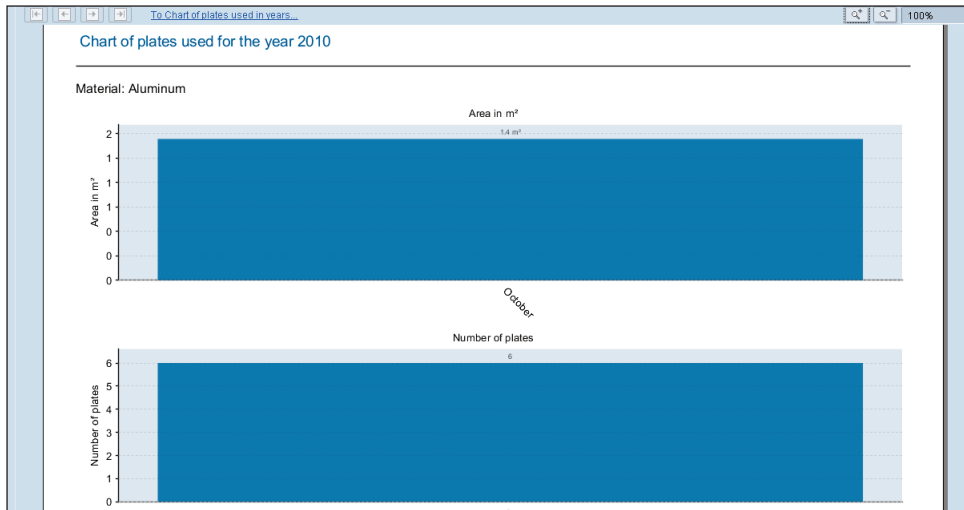
**New Status Messages at the Press** – Starting with Press Center version S09A and an integrated Pressroom Manager, more information can be sent to the press with the job. Things like the **job status** (started, interrupted or finished), the **paper status** (available or not), **status of repeat data**, **status of plates**, and **version information**.



**CO<sub>2</sub> Emission** – Analyze Point can now indicate the CO<sub>2</sub> balance for each print job. This is calculated on the basis of certain parameters of the job such as paper used, number of plates needed, and the press energy consumption.



**Plate Statistics** – Analyze Point statistics can now show the **number of plates** and the **used square meters** in the statistics tab. This requires that MetaDimension and/or MetaShooter are joined to the workflow so that they can report their plate production to the integrated system.



**Axis Control and Inpress Control Hotfolder** – In combination with Press Center v10A or higher, the hotfolders can be set up for both Axis and Inpress Control. Setting these to a common location means that the measurement data from both can be displayed in Cockpit as part of the job data. Information displayed in the Quality tabs of Analyze Point lets you track adherence to a process standard during the length of the production run.

Device assistant

Device features

General Press device capabilities Press configuration Operation groups Cost centers Authorization group

Selected components

Select service Workplace Interface Select computer HEIVMSV30A2 Selected device type SheetfedPress

Device name \* CD74-6P3L

Device ID \* 4200

Workplace ID \* 4200

Axis Control / Inpress Control

☐ Enable import of color data

Color measurement directory WHEIVMSV30A2\PTConfig\UT8Hotfolder\CD74-6P3L

Pallet sheet

☒ [Palettenzettel aktivieren]

Select Printer HP4050TN

Template Default

Language English





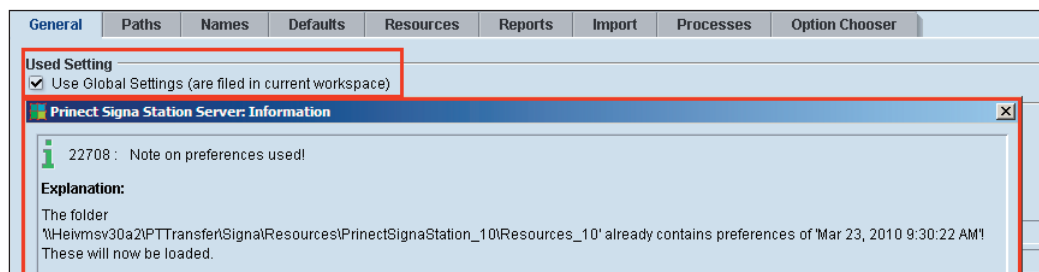
## Prinect 2010 – What's New in Prinect Signa Station

### General Information

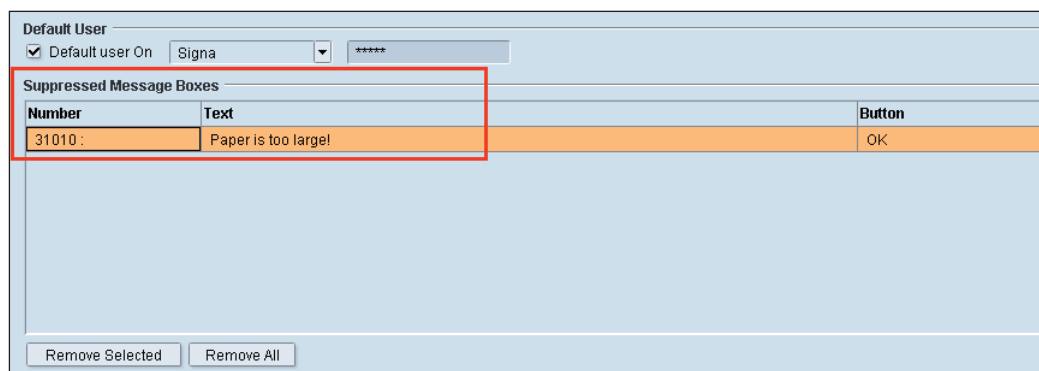
- Prinect Signa Station is supported on the following operating systems:  
Windows 2003 Server, Windows 2003 R2 Server, Windows 2008 64-bit, Windows 2008 R2 64-bit, Windows 7 Pro or Ultimate, Mac OS X 10.5.x and Mac OS X 10.6.x.
- Windows Vista and Mac OS X 10.4.x (Tiger) are no longer supported.
- Prinect Signa Station 10 requires a new license key.

### Changes in Preferences

**Optimized Global Preferences handling** – If a preference file from an existing Signa Station is found in the defined workspace and Use Global Settings is enabled, the existing preference settings will be loaded automatically. Note that Acrobat paths, language selection and units of measure are not stored in the global preferences.



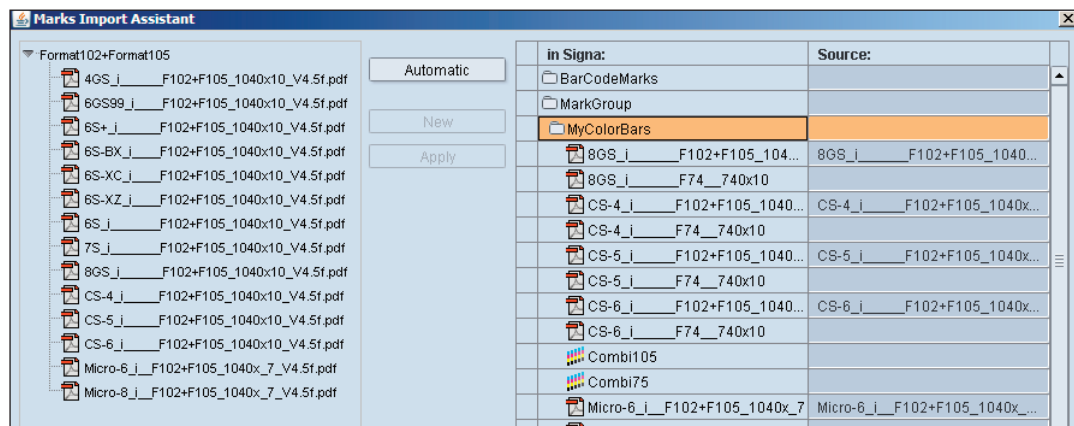
**Management of suppressed messages** – A convenient place where previously suppressed message dialog boxes will be displayed. You can choose to remove any or all of them from the list and they will appear again in the application when appropriate. This can be found on the Preferences > General tab.



**Preview with Transparencies** – A new option that allows the preview to be calculated to include the transparent objects. Enable it in the Preferences > Processes tab.

### Changes in Marks

**Marks Import Assistant** – This new assistant allows manual or automatic updating of either single marks or groups of marks. Adding or removing Dipco marks is now largely automated, resulting in noticeable time-savings and higher reliability. With this assistant you can **add new marks**, **update marks**, or **delete marks**.



**Inverted Mark Color** – Marks colors may now be set to inverted to improve visibility when placed on a dark background. This means that they will print at 0% instead of at 100%.

**New Marks Placeholders** – Some New placeholders for text marks have been added in order to provide more information on the press sheet. New fields include **Plate Number**, **Sheet Description** (from MIS), **Folding Sheet ID** (from MIS), **Segment Name** for segmented folding sheets, **Article** for package printing, and **Paper Type**.

**Reference Icons** – A small new feature that includes icons in the Marks list showing the placement reference point for each mark. Makes it easier to decipher than the old mid-mid or lower bottom nomenclature.

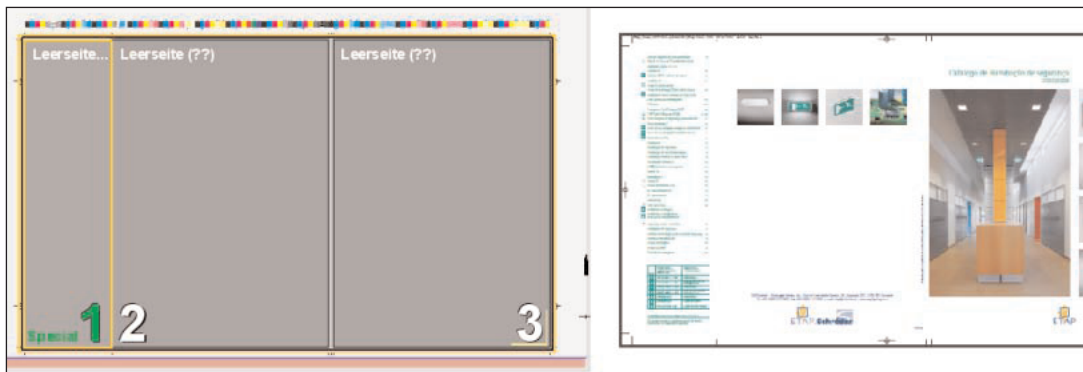
Marks List			
Icon	Name	Reference Po	Surface
	Combi105		Plate Templ
	PullLay		Plate Templ
	plcV4.5a_Sup		Plate Templ
	MyPlateTextM		Plate Templ



## New Functions

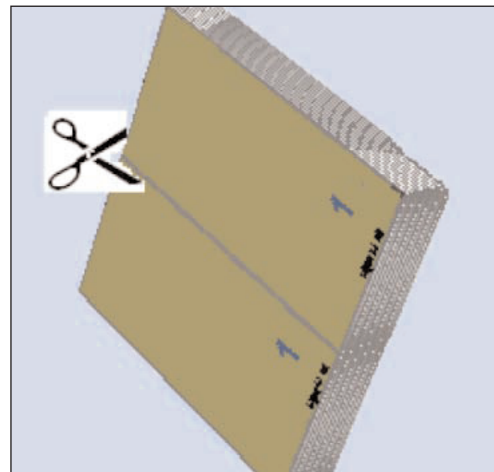
**Single page for folding sheet** – Large montage objects like letterfolds, book covers, tri-fold brochures, etc. are often delivered as PDFs larger than the page of a folding sheet. Prior to now these jobs were often processed with a single scheme, instead of the correct multi-page scheme. The drawback to this was that improper or sometimes no data was generated for cutting or folding information. These marks often had to be set manually which led to error. Using the new Single page for folding sheet option in the Master Pages tab allows Signa to now process these large single sheet jobs automatically and generate the correct postpress data.

The screenshot shows the 'Master Pages' tab in the Prinect software interface. It features several sections: 'Master Page Types and Trimmed Size' with fields for 'Types' (set to 'just one'), 'Cur. Type' (set to 'Left Pages'), 'Width' (8.5), and 'Height' (11.0); 'Page-related Bleed' with a 'Bleed' field (0.125); and 'Custom Bleed and Trim Allowance' which is expanded to show 'Custom Bleed Values'. In this section, both 'Use custom values' and 'Single Page for Folding Sheet' are checked. Below these are fields for 'Outer' and 'Inner' values, both set to 0.125. Two red arrows point from the 'Single Page for Folding Sheet' checkbox to the 'Width' and 'Height' fields in the 'Master Page Types and Trimmed Size' section.



**Segmented Folding Sheets** – Many times in the production of small-format jobs, it is ideal to combine jobs on one large production folding sheet. Jobs are combined, the sheet is printed, folded and stitched. After the last step, individual components are cut apart and separated. This new feature provides a nearly automatic method of producing these jobs. To accomplish this, the layers function is used in combination with an extended master page definition. The user defines the final trim size, number of copies, gaps between copies and the sheet is automatically generated.

Master Page Types and Trimmed Size			
Types:	just one	Cur. Type:	Left Pages
Width:	4.0	Height:	16.75
Page-related Bleed			
Bleed	0.125		
Custom Bleed and Trim Allowance			
Custom Bleed Values			
<input type="checkbox"/> Use custom values	<input checked="" type="checkbox"/> Single Page for Folding Sheet		
Outer:	0.125	Inner:	0.125
Top:	0.125	Bottom:	0.125
Trim Allowance for Pages			
Outer:	0.0	Inner:	0.0
Top:	0.0	Bottom:	0.0
Segmented Folding Sheets			
<input checked="" type="checkbox"/> Folding sheets are segmented			
Size of Single Segment Page after Separating Cut			
Width:	4.0	Height:	4.0
Segment Order on Folding Sheet Page			
Copies X:	1	Y:	4
Gaps X:	0.25	Y:	0.25



## Prinect 2010 – What's New in Prinect MetaDimension

### General Information

- Prinect MetaDimension is supported on the following operating systems:  
Windows 2003 Server, Windows 2003 R2 Server, Windows 2008 64-bit, Windows 2008 R2 64-bit, Windows 7 Ultimate 64-bit, and Windows XP Professional 32-bit.
- A new license key will be required for Prinect MetaDimension v10.
- The upgrade requires a base install of MetaDimension v7.5 to insure safe data migration.

### New Interpreter Version

A new version of the CPSI interpreter now includes support for Acrobat 9 (PDF 1.8).

### New Screening System

**IS Classic+7.5°** is a new screen system that features the following angles: Cyan 112.5°, Magenta 172.5°, Yellow 37.5°, Black = 52.5°. This angle substitution version helps ensure more harmonic skin tones and an overall reduced aliasing effect in the Black.

### New Columns in the Job List

New columns in the PrintManager job list allow you to view and sort jobs by **Customer Name** and **Planned Start Time**.

### New Calibration Manager functions

Generation of a single data record for any number of process colors, including multicolor and Hexachrome, has been implemented. Until now, three data records were required to calibrate a Hexachrome process.

Import of test data and of mini spot data from IT8 files is possible.

All existing paper white spots (= 0%) are generally averaged during import of test data. The mean value then represents the paper white for all colors. This procedure is now identical with that in Color Tool.



### **New in Color Proof Pro**

Color Proof Pro has added additional printer support for the following proofers:

- Epson x900 (including measuring device)  
Automatic creation of Linearization
- PS Printer driver for HP9500
- Canon iPF 810 / 820 / 6200 and 6000s
- HP 510
- Fold & Stitch capability for Oki 9650  
Activated in the output tray section under Special in the ColorProofPro settings
- HP 4020 / 4520
- Epson Aculaser C9200



## Prinect 2010 – What's New in Prinect PDF Toolbox

### General Information

- Prinect PDF Toolbox supports Acrobat 7.x, 8.x, and 9.x.  
Note that the new Barcode Editor is not supported with Acrobat 7.
- A new license key will be required only if you are activating one of the three new options; Barcode Reader, Imposition Editor 75 or Imposition Editor 105. Otherwise, current v4.x licenses can still be used.

### New: Barcode Editor

**Barcode Editor** is a new Acrobat plug-in mainly for packaging printers. It allows for the easy creation and replacement of barcodes on PDF one-ups or documents. Often the package designers do not know about the exact barcode requirements which have to be met for subsequent postpress processes. With the Barcode Editor, incorrect code patterns may be eliminated and replaced with accurate barcodes which are machine-readable without problems.

### Imposition Editor Enhancements

**Imposition Editor** is now available in format classes 52, **75** and **105**. This corresponds to our customers' desire to be able to use this basic imposition tool also for larger formats. Furthermore some new features and marks enhancements have been added to the software in order to extend its functionality.

### Extended preflight options in PDF Assistant

The preflight tool PDF Report has been expanded to include checks for parameters required for the **PDF/X-4 standard**, including new pre-defined settings.

There is also a new check for **missing image data**. An image defined by height, width and color space is always associated with an exact number of bytes. Image data is usually missing when an error occurred during PDF writing. This can now be flagged early in the process.

New **checks regarding font embedding** have also been added. It checks if a character is not defined in the embedded data, if the character is embedded several times, and if the character is defined incorrectly. Any of these conditions might cause incorrect printing.

**Additional color checks** have also been added. Check for any individual color, and the spot color none. Check for overprinting characteristics such as CMYK white overprint including images and 0% spot color overprint, or an overprinting CMYK element that has an ICC profile.



