

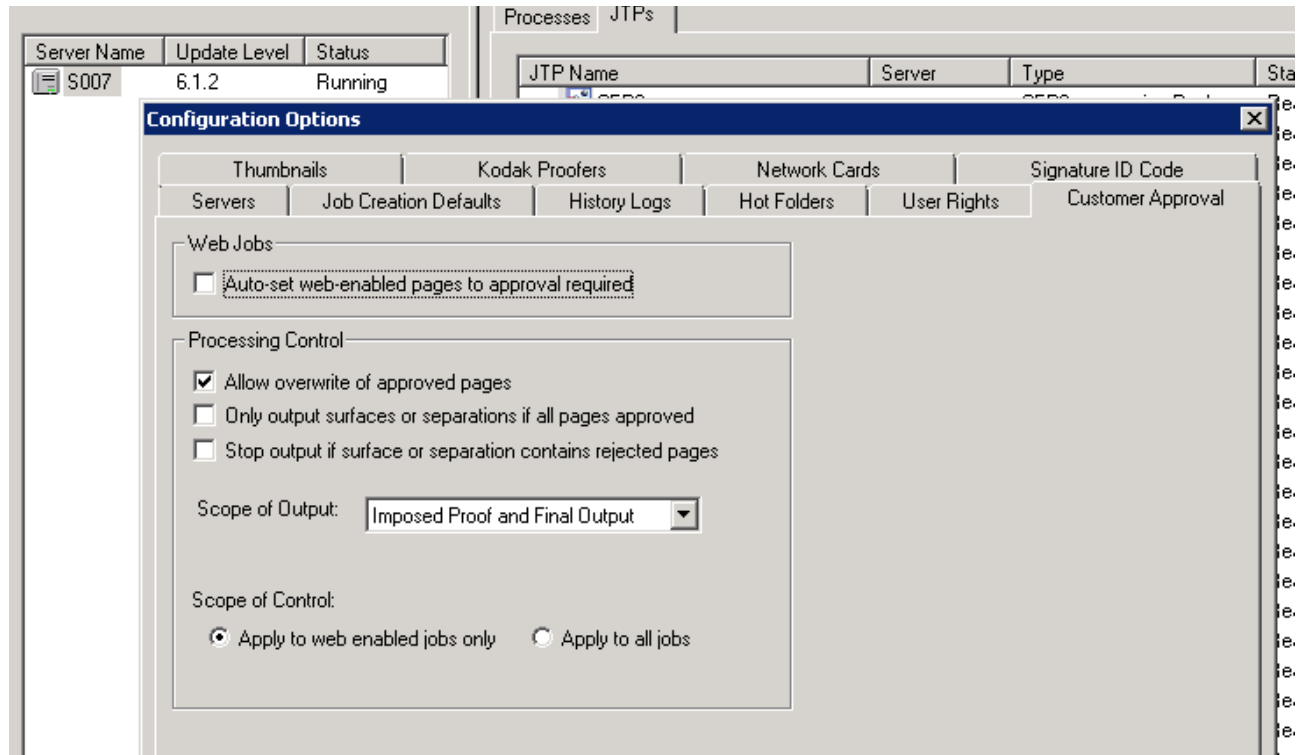
We have Prinergy Connect 6.1.2 a InSite 6.7.1.15057, Windows Server 2008 R2 Standard, all installed by Kodak approved local company.

Behavior of the system has changed, literally overnight, without any upgrade or other system change, to my knowledge.

#### Problem 1:

**Approve/Reject** is not available for the Customer User.

In Connect Administration we have as default **unchecked** Auto-set web-enabled pages to approval required



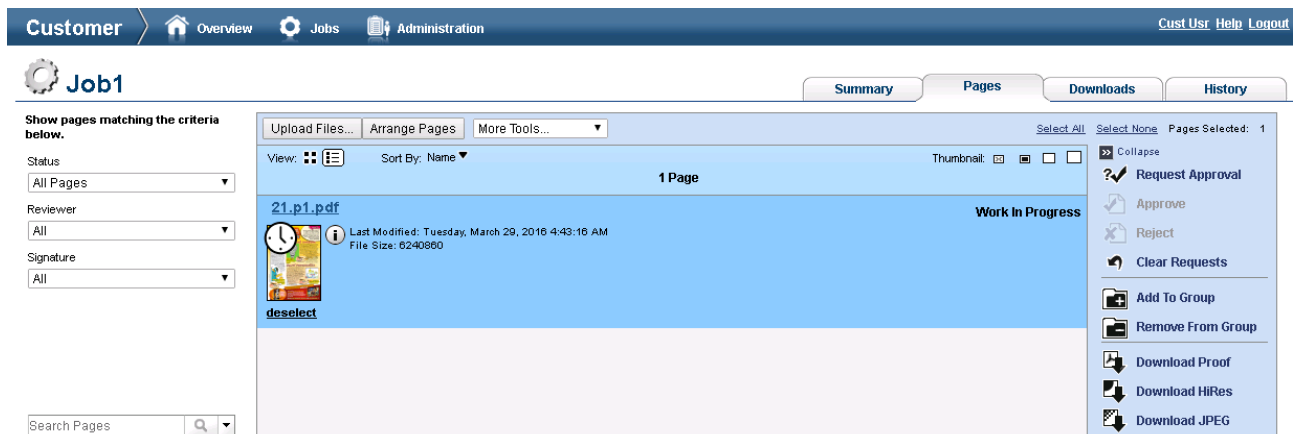
In InSite Administration we have set as default

Page-Approval/Review Workflow for Customer Users: **Always allow**

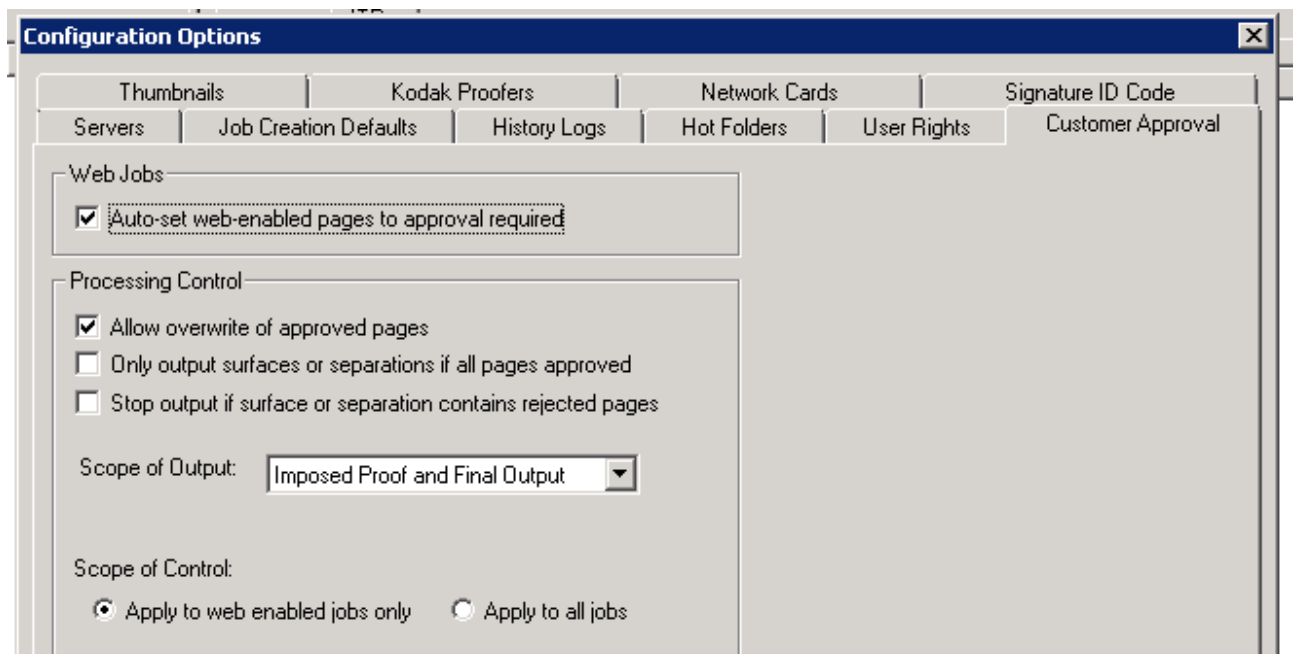
#### Workflow

Primary Server	s007
Enable Rip for Rendering Proofs	No
Use Rip as default Renderer	No
Job Server for InSite Jobs	S007
Job Server Share Name	AraxiVolume_S007_J
Number of Pages Per List View	32
Number of Pages Per Gallery View	32
Resolution for LowRes RGB JPEG Proofs	50;100;220
Manually Register Pages of Type	None
Manual Page Registration File Shares	
Preflight Default Unit Of Measure	pts
Default File Uploader for IPP Jobs	HTML5 Uploader
Default File/Page Downloader From IPP Jobs	HTML5 Downloader
Page-Approval Workflow for Customer Users	Always allow
Page-Review Workflow for Customer Users	Always allow

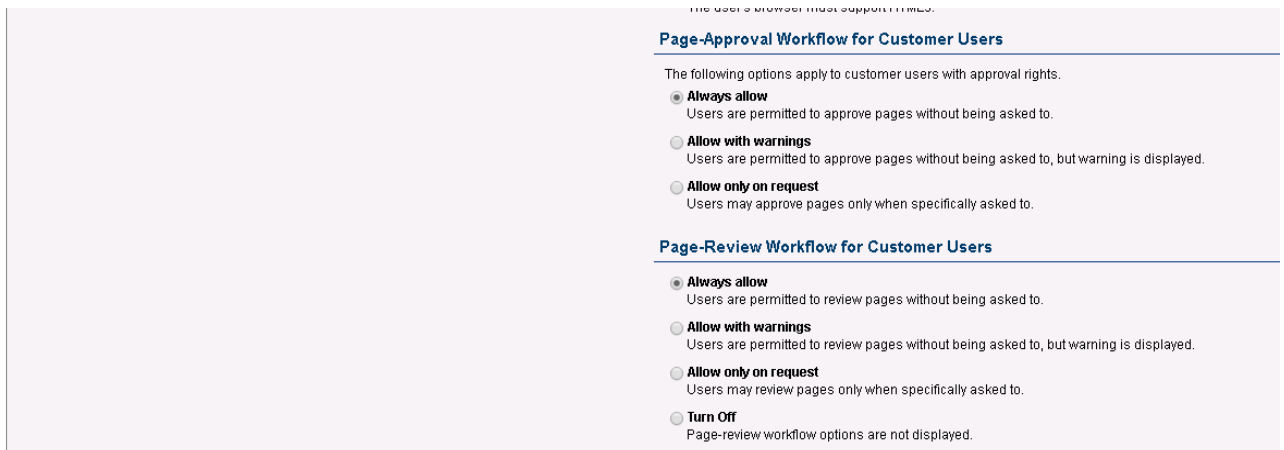
But when Customer User upload the page (and after the page is refined), when he selects page, both links Approve/Reject (page) are disabled, regardless of role, assigned to Customer User.



The only way we can get these two links active for Customer User is check **Auto-set web-enabled pages to approval required** in administration.



But this means, that preference for Page-Approval/Review Workflow for Customer Users (see bellow) has no sense, as, in fact, there will be always request for approval.



Before change Approve/Reject links was active/inactive exactly according to the preferences (means for Customer User without Auto-set), this new behavior is, imho, against the manual, and gave no sense.

## Problem 2:

Staff User can move job to production, and after this, can revert job to pre-production.

Before change, **Customer User** can send job to production too, but no back to pre-production. Now sending to production has **completely gone** for customer user.

I can swear that i was reading about this functionality (Customer User can send to production) somewhere in manual, but now, unfortunately, i can not find where. Everybody tells me that i am wrong, but i think i have used this functionality for some tests in the past.

Most curious part: guys from local Kodak dealership make for me new install of Prinergy Connect (incl Windows OS, database, all this stuff) and clean install of InSite (only application), but nothing changed.

Thanks for any insight and best regards,

kamil.tresnak@gmail.com