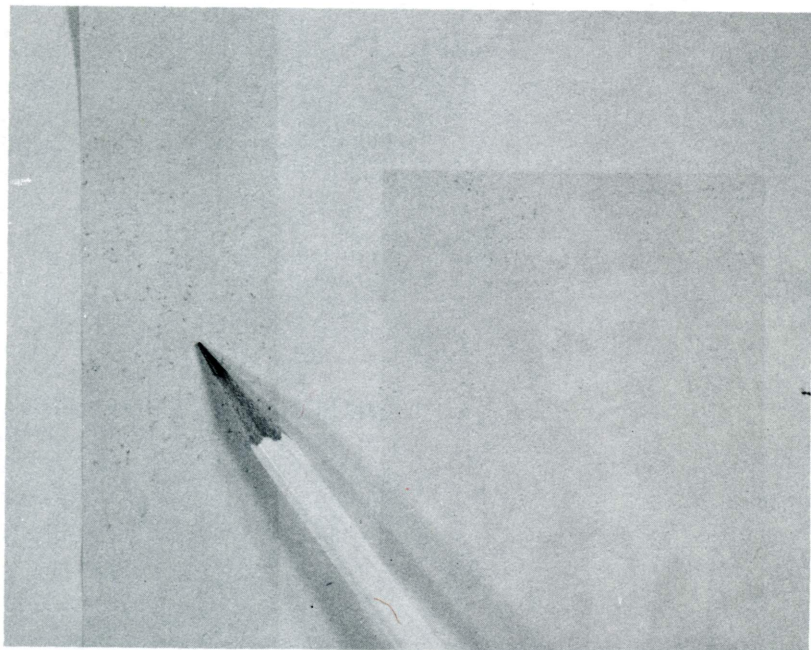


**Ink Setoff and Blocking:** Wet ink on the surface of the sheets transferring or sticking to the backs of following sheets in the delivery pile.

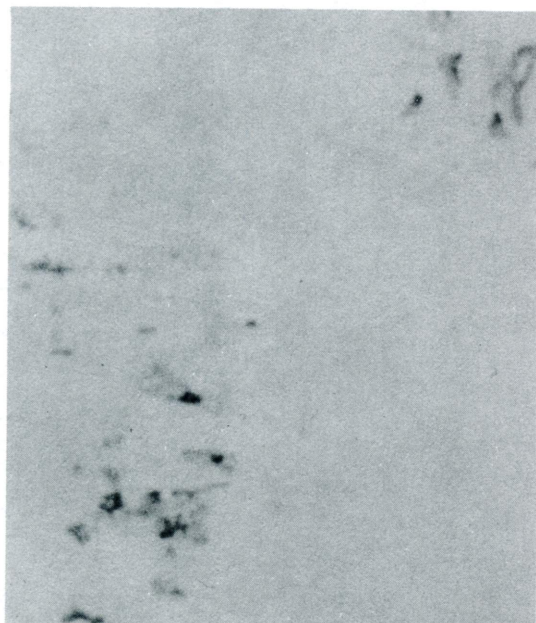
*Detection:* Examine backs of sheets (facing the freshly printed side) in the delivery pile for traces of ink transferred from the wet sheet, particularly at sides and tail end of sheet. Blocking occurs when the wet ink causes the sheets to stick together.

*Synonym:* Offsetting

*Reference:* GATF's *Paper* book



Photograph of ink setoff on the back of a press sheet which faced a heavy solid on the printed side of the sheet.



A 12x photomicrograph of an area on the sheet in the upper figure.