

MATCHING CLOSEST PMS TO A PROCESS MIX

Step 1 is to set your Color Settings (found under Edit>Color Settings) to either of the setting shown in figure 1.

If you set them to North American Prepress 2 (recommended by the color management world) you will be asked about color mismatches when opening files. If you chose this one be sure to not convert upon opening files that indicate they have a different profile that your working space.

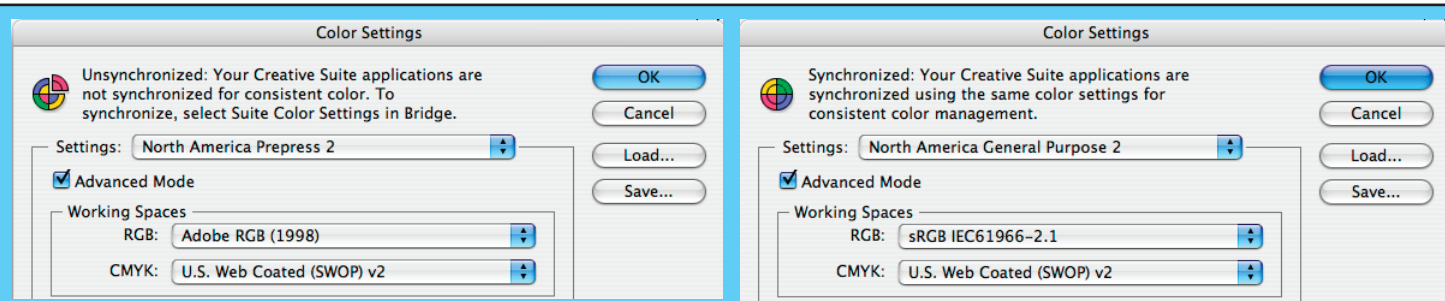
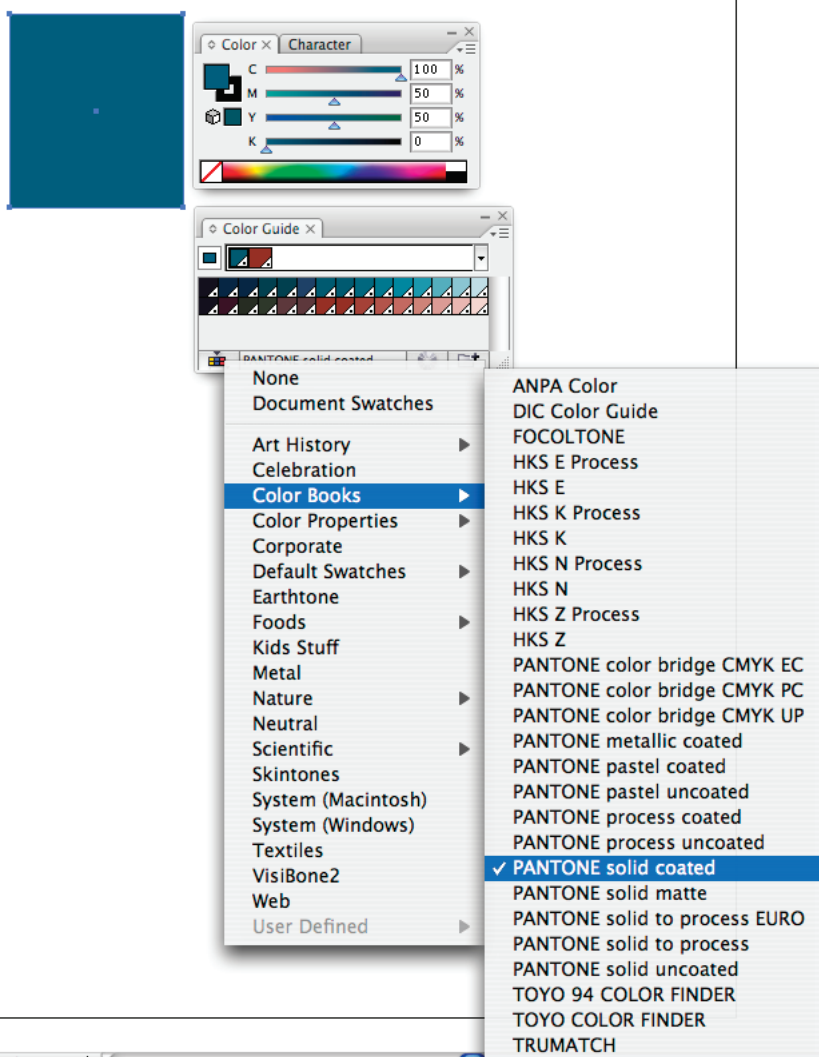
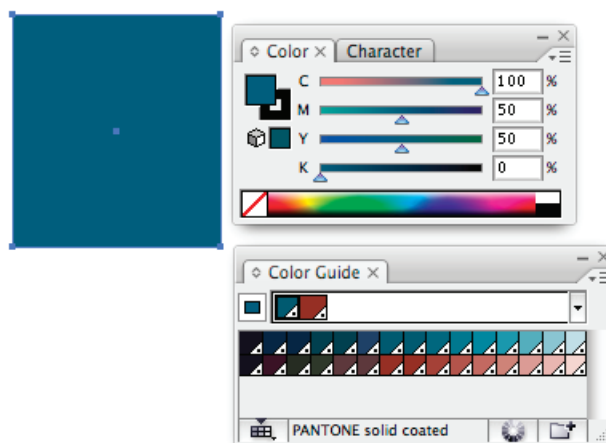


Figure 1

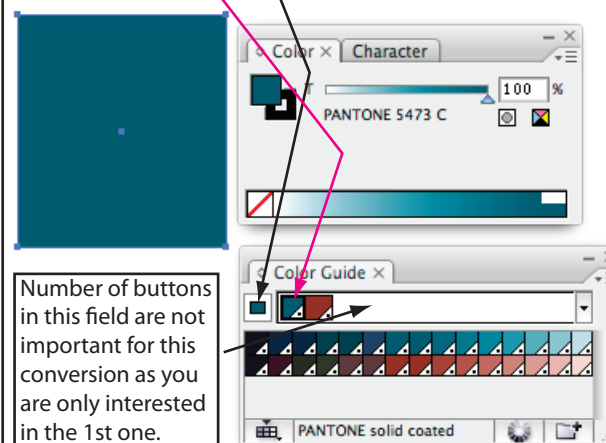
Step 2 is to open the Color Guide window and click on Show Options. You will see a little guide icon in the lower left hand corner of the Color Guide window. Click on it and as shown below select the color library you want - in our case it would be PANTONE solid coated



Step 3 shows the graphic filled with CMYK and the Color Guide set up properly.



Step 4 - make sure graphic is selected and click on this button to set color. Click on this button and Illustrator will select the best PMS match.



Number of buttons in this field are not important for this conversion as you are only interested in the 1st one.