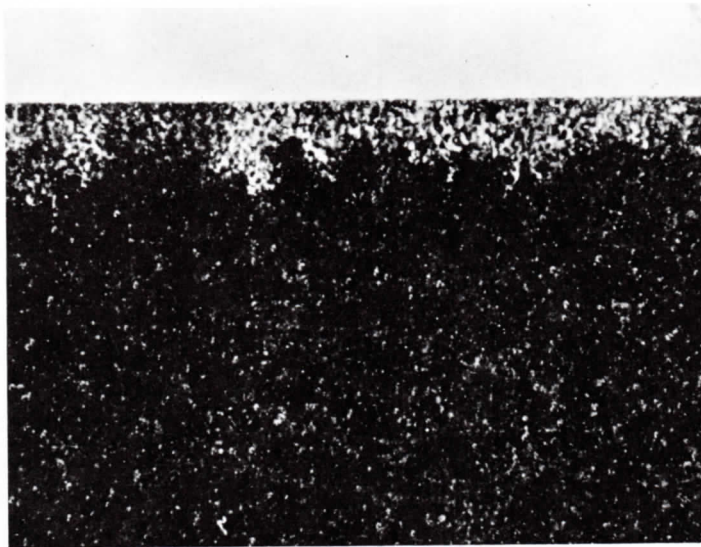


Wash Marks: Ragged areas of low ink density which extend back from the leading edges of the image.

Detection: Examine the leading edges of dark tones and solids. Wash marks will appear as very snowflaky areas extending toward the back or trailing edge of the sheet.

Reference: GATF's *Press Troubles* book



A 12x photomicrograph of a wash mark at the leading edge (top of figure) of a solid on a press sheet.